

Changes in Building Services

Over the past several months, we have been making changes in personnel and the routes they cover. We continue to have 38 routes each night, and 4 routes during the daytime. We also continue to deal with staffing shortages by shifting staff around and skipping routes whenever necessary.

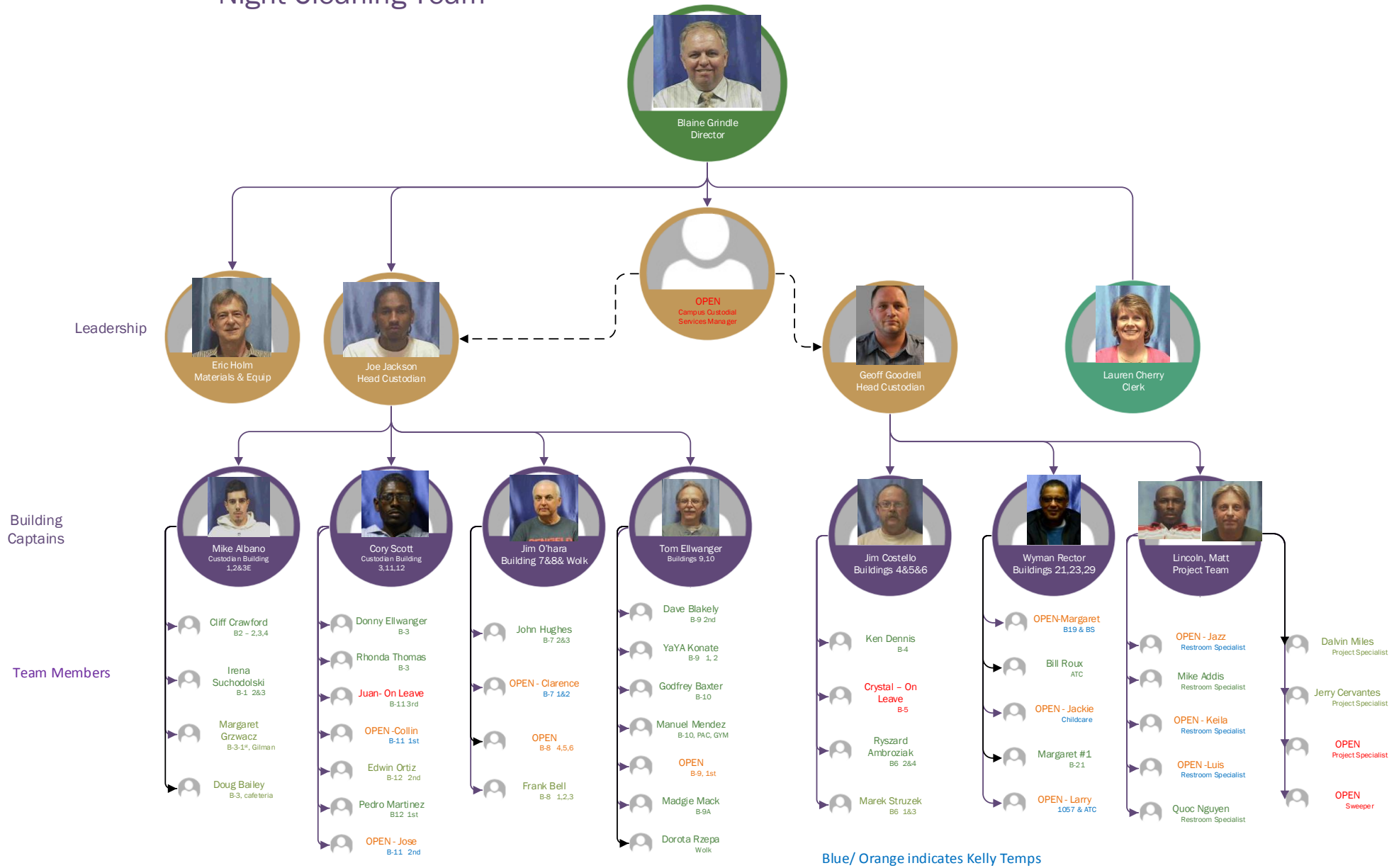
Our most significant change is the establishment of a Restroom Crew. Six dedicated individuals have volunteered to spend each night cleaning restrooms as a dedicated team. They have been trained in the latest equipment and techniques for touch free cleaning and sanitation of the restrooms. This is our highest priority each night. We have also assigned permanent crews to the food service areas, student areas, classrooms, and high-touch visible areas. The remaining areas we strive to clean, or at least trash out, every other night and Friday nights. If your area isn't getting this service, you can help us by putting trash with food debris in the hall containers that the Recycling Committee has distributed. The black cans are a priority for us also.

The other significant change is the introduction of Building Captains to the Brighton Campus. Because our staff is spread so far apart, we have introduced the concept of a captain for groups of buildings. These captains are the newly promoted Custodians. Custodians have supervisory duties and will act as trainers, inspectors for quality control and cleaners responsible for hallways, stairwells and open areas. Questions or problems within your building can be directed to a Building Captain, a Head Custodian, or directly to the Custodial Operations center.

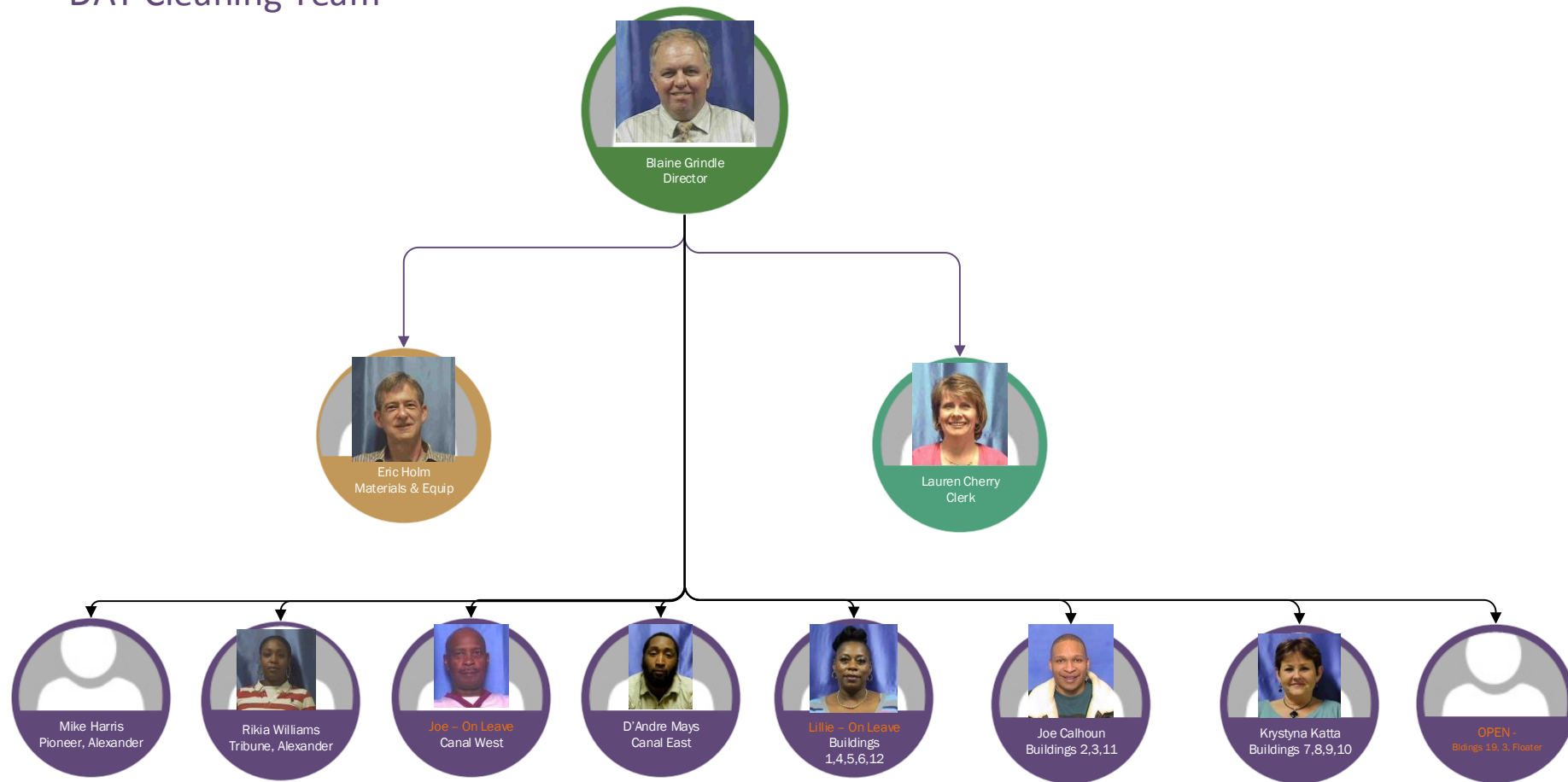
Attached are our current staffing charts. You can find your Building Captain and Head Custodian on these charts. You can also find the cleaner associated with your floor or building, but that may change as we make adjustments to staff, and hopefully hire some replacements. (Hint – The charts print best on 11x17 paper. However, Legal size will work. You might need to zoom in on the PDF to read the charts if you don't want to print them.)

Finally, the Recycling Committee will be starting a test program next week in Building 6 on the fourth floor. They have removed the trash cans from inside the classrooms and added more recycling stations in the hallway. We hope that faculty, staff and students "Carry In and Carry Out" and use the central stations for disposal. There are 3,250 trash cans on the Brighton campus. If any offices would like to help us out and let us change to a central station in your suite, please let us know. We would be happy to install a central trash/recycling center if you have the room.

MCC Custodial Operations Night Cleaning Team



MCC Custodial Operations DAY Cleaning Team



Cleaners/
Day Porters

Blue indicates Kelly Temps