

Inclusive Emergency Management:

Cultural Shifts and Trends for Special Needs Populations

Bruce A. McFarlane, Sr.

Deputy Director

Emergency Preparedness Initiative
National Organization on Disability



August 2009



ENOUGH WAS ENOUGH!



WAT PANGLOSSIAN Newsday



The Preparedness Revolution

“We are experiencing many independently significant incidents. However, if we choose to harness the experience gained as a result of these incidents collectively, we are in an ideal position to create the Preparedness Revolution. If we harness the incidents affecting the disability community collectively as well, we can ensure this community is completely enveloped within the Preparedness Revolution.”

George W. Foresman

*Under Secretary for Preparedness
U.S. Department of Homeland Security*

2006

NFPA: Disability Preparedness

“ Disability is not about a specific group of people. Disability is about a specific time in the life of each and every one of us.

For some it may be temporary, for others it may last much longer.

As a society, we have mistakenly adopted a mindset that divides us into two groups, “able-bodied” and “disabled.” The fact is that we all will be part of the disability community for some time in our lives.

If we act from the perspective of what we would want when, rather than if, we become disabled, we truly will be able to make great progress for all people.”

Today's Charge

- **The Cultural Shifts (2)**
- **Four Levels of Stakeholders**
- **Community Awareness**
- **Guidance and Expertise**
- **Changing Your Perspective**



The Cultural Shifts

➤ **Inclusion (representation)**

History (Lessons Learned)

Nationwide Plan Review (2006)

NRP and NIMS Review (2007)

Incident Command Structure

➤ **Language and Definition**

Special Needs vs. Functional Needs



Cultural Shift #1: Inclusion

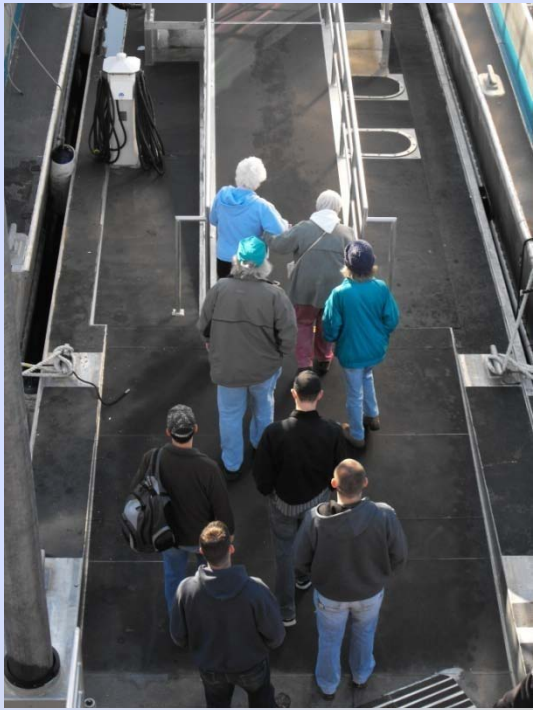
History (Lessons Learned)

- **Safety Regulations – past events**
- **1993 – Virtually nothing in print**
- **9/11 – DHS and HSPD 5**
- **Executive Order 13347**
- **Twisted Sisters (Katrina/Rita/Wilma)**
- **Denver Airport – 2007**
- **Savannah Sugar Factory - 2008**

Inclusive Planning

- **Special Needs issues must be fully integrated in all phases of emergency management:**
 - planning, preparedness, response, recovery, and mitigation**
- **Working *with* special needs populations, not for...**
- **Not a homogenous group:**
 - there is no “one size fits all”**

Inclusive Planning



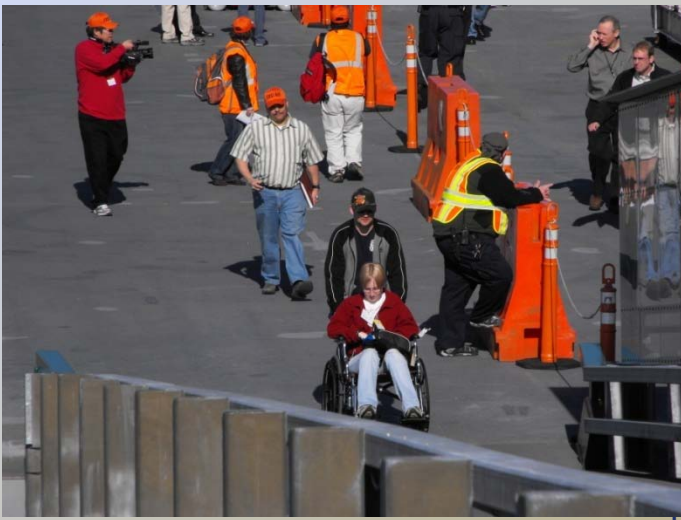
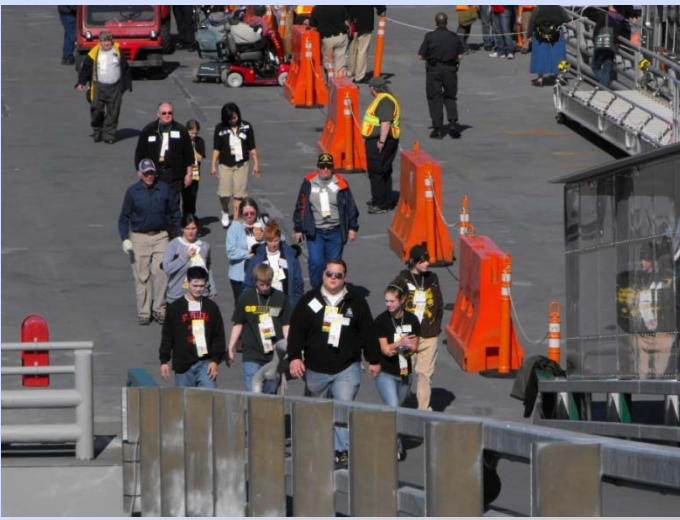
Inclusive Planning – DO!!



Inclusive Planning – DO!!

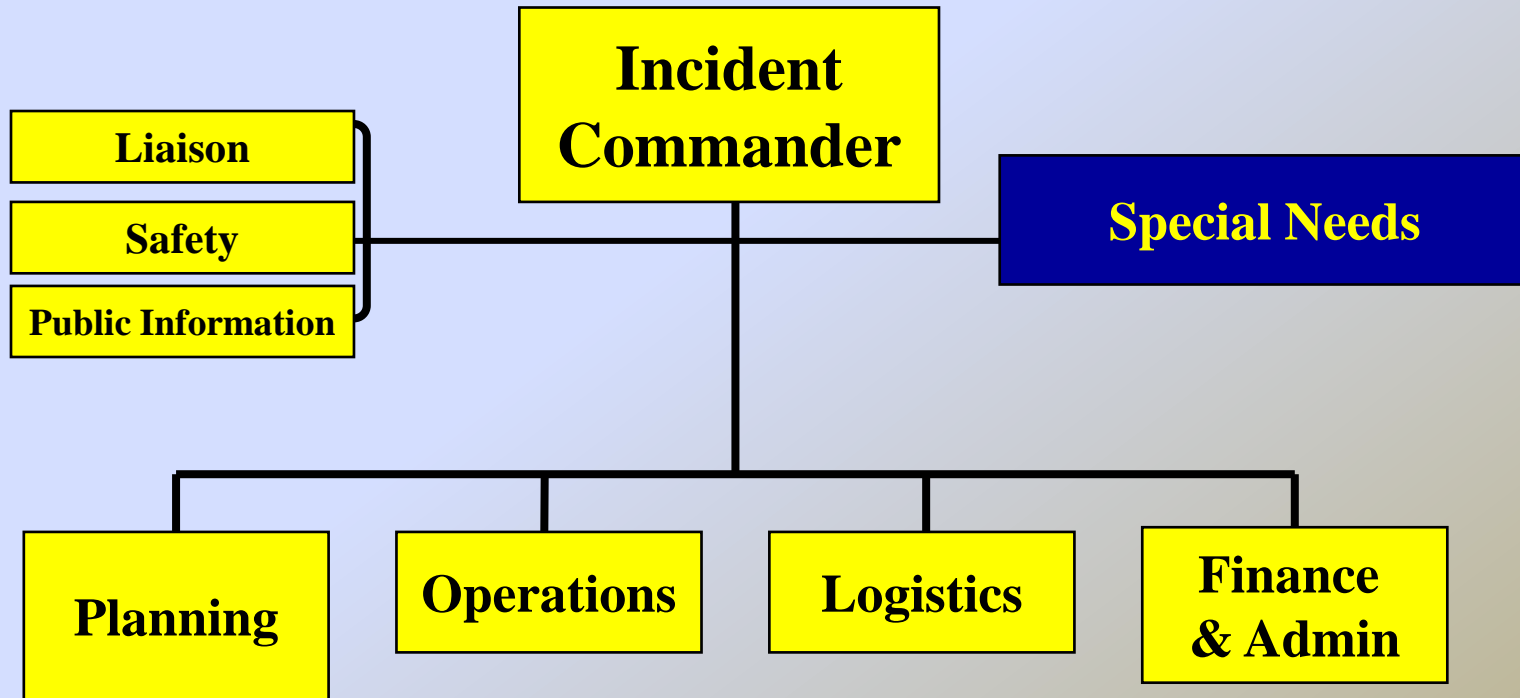


Inclusive Planning – DON'T



Cultural Shift #1: Inclusion

HSPD 5 – NIMS: Incident Command Structure



Cultural Shift #2

Defining Special Needs

- **Define and identify as appropriate for your community:
independent & dependant**
- **Functional model vs. Medical model**
- **Very much still a topic of great debate!!**



FEMA NRF Definition (2008)

Populations who may have additional needs before, during, and after an incident in functional areas, including but not limited to:

- ▲ Maintaining independence**
- ▲ Communication**
- ▲ Transportation**
- ▲ Supervision**
- ▲ Medical care**



FEMA Definition (continued)

Includes people:

- ▲ With disabilities (20%)
- ▲ Who live in institutionalized settings
- ▲ Who are elderly (24%)
- ▲ Who are children (12%)
- ▲ Who are from diverse cultures (5%)
- ▲ Who have limited English proficiency or non-English speaking (3%)
- ▲ Transportation disadvantaged (3%)

Vulnerability in all Phases

Preparedness

Communication/Notification

Evacuation

Sheltering

Housing

Recovery

Mitigation



Stakeholders: 4-Levels

by Dr. Brenda Phillips,
Oklahoma State University

- **Micro Level:** Connecting people, families, neighbors (phone trees & Buddies)
- **Meso Level:** Build partnerships (ILC, community, towns, counties WITH businesses: Red Cross, Fire and Police departments)



Stakeholders: 4-Levels

by Dr. Brenda Phillips,
Oklahoma State University

- **Exo Level:** Policy review and changes, deployment of governmental resources
- **Macro Level:** Social/Cultural changes, no person is expendable, transformation is a lifelong commitment



Community Awareness

➤ **First Responders vs. Community**

✓ **Responder:** Safety vs. Communication

Act now, explain later

✓ **Community:** Skepticism vs. Action

Follows the ABCs of incidents

a) **A**nnouncement of information

b) **B**ehavior : What should I do....

c) **C**onsequences: action vs. no action



Hurricane Katrina (2005)

- ▲ Louisiana Fatalities: ~1,464 reported deaths
 - ▲ 910 recovered by DMORT, 64% were 65+
 - ▲ NOLA: 60+ made up 15% of the population, 74% of known victims were in the same age group
- ▲ 44% of those who didn't evacuate were physically unable to leave or caring for a person with a disability



Bring in the Expertise

Collaboration is essential – the task is too big

- ▲ Identify partners within special needs community**
- ▲ Bring in representatives of different groups**
- ▲ Incorporate into plans**
- ▲ Develop agreements that outline roles and responsibilities**

Learn from the experiences of others

2007 Post-Katrina Legislation

- **Inclusion of people with disabilities in every phase of emergency management & planning.**
- Requirements for plans for the provision of post-disaster, case-management services to victims and their families.
- **Requirements for accessible temporary and replacement housing.**
- Non-discrimination in services on the basis of disability.
- **Establishment of a National Disability Coordinator within DHS.**



Research/Studies

- **Project Safe EV-AC (WVU)**
- **Access Alerts**
- **Nobody Left Behind (mobility)**
- **2005 SNAKE Report (NOD)**
- **National Council on Disability project**
(Aug 12, 2009 at IAEM/CERT Conf.)



Innovative Practices

Senior Center/Safe Centers (AL, FL)

Aging Network use of Emergency Mutual Aid Compact (EMAC) in 2005

Special Needs Advisory Panels (IL, NJ)

Oklahoma WARN (OK-WARN)

Preparedness. It's Your Turn!

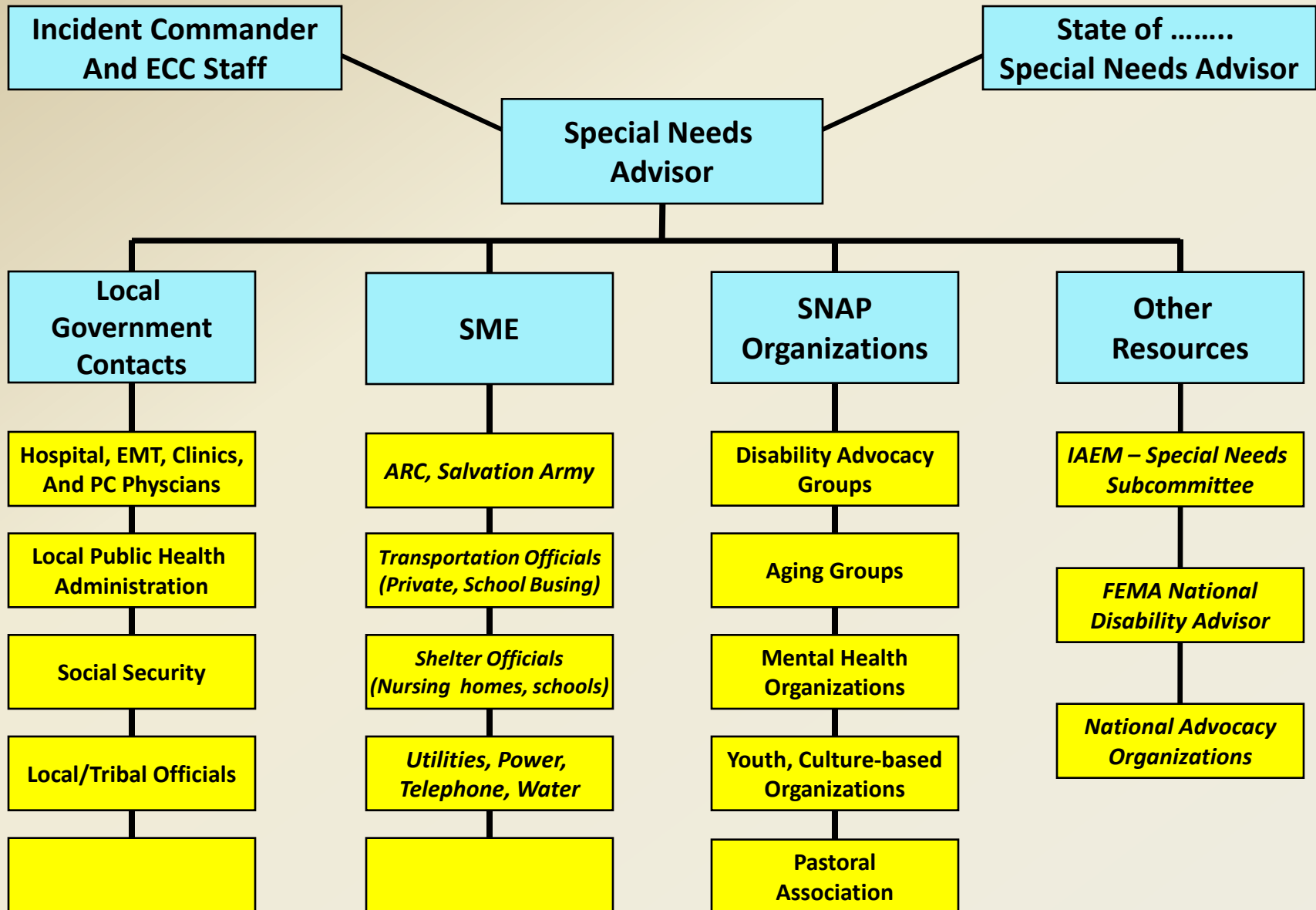
IAEM Special Needs Committee

911-Texting (Black Hawk County, IA)

Startup in July '09, <http://bit.ly/tbrQY>



Special Needs Advisory Branch



New Guidance Materials

Department of Justice: “*ADA Guidelines on Sheltering*”

FEMA/CRCL : “*Emergency Management Planning Guide for the Special Needs Populations*”

HHS/ARC: National MOU

The U.S. Department of Education: “*The Action Guide for Emergency Management at Institutions of Higher Education*”

<http://www.citizencorps.gov/>



New Guidance Materials

Preparing for Disaster for People with Disabilities and other Special Needs (FEMA 476)

Available in Spanish (PDF 601KB, TXT 32KB)

Provides disaster preparedness information specific to people with disabilities and other special needs, including the elderly.

Emergency preparedness information from DisabilityInfo.gov

Find links to additional preparedness information, grants, assistance, government policies, initiatives and much more.

EPI-NOD: *www.NOD.org/emergency*

EAD and Associates, LLC: *www.eadassociates.com*

Summary – Action Steps

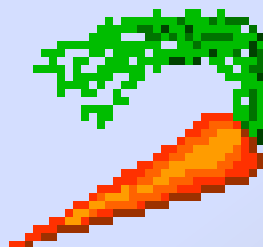
- 1. Integrate special needs in all elements of emergency management**
- 2. Work Collaboratively (“with... not for”)**
- 3. Utilize guidance/studies and advocate for more!**
- 4. Seek best practices and customize to your needs**



Changing Your Perspective

Are you:

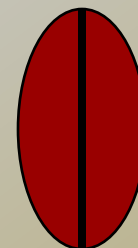
A Carrot



An Egg



Or a Coffee Bean





Questions???



Hilary Styron, National Director
Emergency Preparedness Initiative
National Organization on Disability
styronh@nod.org
(202) 293-5960

Bruce A. McFarlane Sr., Deputy Director
Emergency Preparedness Initiative
National Organization on Disability
mcfarlaneb@nod.org
(202) 293-5960