

**MONROE COMMUNITY COLLEGE**  
**Radiologic Technology Program**

**CLINICAL EDUCATION BOOKLET**  
**Table of Contents**

1.0	Clinical Education Goals and Objectives .....	3
2.0	Competency Education Plan .....	8
3.0	Structure of Clinical Education .....	9
4.0	Program Policy #16 on Clinical Supervision of Students .....	11
5.0	Clinical Education Course Outlines	
	* XRT 151 Orientation/Clinical Education I .....	12
	* XRT 152 Clinical Education II .....	16
	* XRT 153 Clinical Education III .....	19
	* XRT 251 Clinical Education IV .....	22
	* XRT 252 Clinical Education V .....	25
	* XRT 253 Supplemental Clinical Education .....	29
6.0	Clinical Education Evaluation by Student Form .....	32
	Evening Rotation Evaluation by Student Form .....	36
	Private Office Evaluation by Student Form .....	37
7.0	Clinical Education II-V Assessment Instruments	
	7.1 Grade Worksheets	
	* Mid-Term .....	38
	* Final .....	40
	7.2 CEC Student Area Evaluation Assignments	
	* Highland Hospital .....	42
	* Newark-Wayne Comm. Hospital .....	43
	* Strong Memorial Hospital .....	44
	* Rochester General Hospital .....	45
	* Park Ridge Hospital .....	46
	7.3 Area Evaluations	
	* Radiographic/Fluorographic/Tomographic .....	47
	* Special Procedures .....	48
	* Operating Room Procedures & Portable C-arm Mastery .....	50
	* Portable Procedures & Portable Equipment Mastery .....	52
	* Ultrasound .....	54
	* CT Scanning .....	56

*	MR Imaging . . . . .	58
*	Patient Services . . . . .	60
*	Public/Patient Safety . . . . .	61
*	Room Equipment Mastery . . . . .	62
*	Computed Radiography . . . . .	64
*	Digital Radiography . . . . .	65
7.4	Clinical Competency with Mastery Learning Plan	
*	Competency Tests Checklist . . . . .	66
*	Mastery Learning / Clinical Competency Test . . . . .	68
*	Remedial Criteria for Clinical Competency Re-Testing . . . . .	70
7.5	Film Critique Assessment . . . . .	71
7.6	Assessment of Professional Growth . . . . .	72
*	Progress Form . . . . .	74
7.7	Counseling/Anecdotal Record . . . . .	76
8.0	Program Policy #30 on Evening Shift . . . . .	77

Disclaimer Clause

Assessment is an important element in a program’s overall evaluation process and leads to continual improvement. Program policies, offerings, and requirements are continually being assessed and improved. The contents of this booklet are in effect at the time of revision and are subject to change. Students will be notified of changes in policy and requirements.

**MONROE COMMUNITY COLLEGE  
RADIOLOGIC TECHNOLOGY PROGRAM  
CLINICAL EDUCATION CURRICULUM**

**GOALS**

**DURING THE CLINICAL EDUCATION PORTION OF THE PROGRAM  
THE STUDENT WILL:**

1. Gain an appreciation of the complexities of the clinical setting.
2. Understand the differences between facilities.
3. Appreciate the diversity amongst patients.
4. Value their role as part of the health care team.
5. Appreciate the effects of patient condition on a radiographic study.
6. Appreciate their role as a colleague and co-worker.
7. Acquire skills in synthesizing didactic theory and clinical performance.
8. Understand the relationships between theory and clinical practice.

**OBJECTIVES**

**DURING THE CLINICAL EDUCATION PORTION OF THE PROGRAM  
THE STUDENT WILL:**

1. Correctly apply technical factors to produce acceptable radiographs.
2. Identify the criteria for acceptable radiographs.
3. Given a set of acceptable radiographs, critique and evaluate to determine if they meet the criteria for an acceptable study.
4. Given a set of unacceptable radiographs, identify the reasons for their unacceptability and offer suggestions for corrective actions.
5. Given a situational scenario, identify problems and provide suggestions for corrective action.
6. Assess patient condition in relation to their physical well-being and to the procedure ordered.
7. Correctly document facts of the study on patient requisition and in the patient chart.
8. Identify emergency situations and identify responses and treatments.
9. Identify various types of radiographic equipment.
10. Correctly manipulate various types of radiographic equipment.
11. Identify and manipulate elements of a radiographic control panel.
12. Correctly utilize film/screen applications according to department protocol.
13. When applicable, correctly utilize computed/digital radiographic equipment.
14. Identify the differences between patients.
15. Identify hospital procedures, layout, codes, emergency phone numbers, patient safety items, and accreditation issues, state regulatory issues and communities of interest.
16. Identify hospital safety and patient services.
17. Identify and be familiar with hospital protocols for cardiac arrest, fire, baby abduction, disaster and various (bombs, terrorists etc.)
18. Identify and describe patient support services such as family/friends, pastoral care, patient to patient support groups, psychological support groups, hospice, and home care.
19. Identify appropriate interactions between the technologist (student), patient and family.

## CONTENT

### 1. **ORIENTATION**

- a. Hospital layout.
- b. Hospital specific policies and procedures.
- c. Hospital specific codes and emergency phone numbers:
  1. fire
  2. bomb threat
  3. stolen babies
  4. cardiac/respiratory emergencies
  5. disasters
- d. Administrative/department personnel.
  1. clerical - file office/secretaries
  2. technical aides
  3. management/chain of command
  4. physicians/chain of command
- e. JCAHO/State issues.
  1. mandates and regulations
  2. RACE
  3. employee ID
  4. MSDS/OSHA issues
- f. Patient safety/services.
- g. Public safety/services.

### 2. **EQUIPMENT**

- a. Makers of radiographic equipment.
- b. Types of radiographic equipment.
  1. Radiographic/fluoroscopic rooms
  2. angiography suites
  3. cardiac catheterization suites
  4. computed/digital imaging systems
  5. mobile units-radiographic
  6. mobile units-fluoroscopic
- c. Tube types.
  1. floating/ceiling mount
  2. tube stands
  3. tomographic
- d. Tube motions and locks.
- e. Table types.
  1. floating
  2. stationary
  3. portable tables - radiographic and fluoro
- f. Table motions.
- g. Appropriate use and conditions for AEC

- h. Fluoroscopy carriages.
  - 1. locks and movements
  - 2. film loading/unloading
  - 3. field size controls
  - 4. imaging field size selection (4/1, 3/1 etc.)
  - 5. fluoro exposure button
  - 6. foot control pedal
  - 7. grid in/out control
  - 8. compression cone
  - 9. tube/intensifier relationship
- i. Control panels.
  - 1. technical controls (kV, mA, mAs, time, focal spot, AEC, APR)
  - 2. fluoroscopy settings (kV, mA, for fluoro & kV, mA, time for fluoro imaging)
  - 3. fluoroscopy timers
- j. Mobile Units.
  - 1. types
  - 2. portable radiography units (kV, mAs, mAs readouts, lights, tube motions and locks, drive mechanism, power mechanism)
  - 3. C-arm units (motions, locks, control panel, data entry, imaging)
- k. Technologist/patient safety
  - 1. where fingers get caught, head bumps, crushing or electrical injuries, patient restraints, compression bands (and their use).
  - 2. foot stand placement and testing

### **3. CLINICAL PROCEDURES**

- a. Patient flow.
- b. Paper trail.
- c. Location of units, patient care units, waiting areas.
- d. Sterile technique.
  - 1. surgical attire
  - 2. attire for assisting in sterile procedures
  - 3. tray/field setup
  - 4. assisting in tray/field setup
  - 5. observation/participation in sterile procedures
- e. Isolation techniques.
  - 1. standard precautions
  - 2. strict isolation
  - 3. droplet/contact precautions
  - 4. reverse/protective isolation
  - 5. protective masks/filters - surgical versus duckbill, hepa filters, hepa isolation rooms etc.
  - 6. Gowns, gloves, masks, eyewear protections
  - 7. Appropriate isolation technique - clean versus dirty members
- f. Emergency procedures.
  - 1. location of emergency response items i.e. crash cart
- g. Radiographic/Special procedures.

#### **4. PATIENT ASSESSMENT**

- a. Patient condition - vital signs and symptoms
  - 1. communicating and questioning
  - 2. communicating with floor secretary and nurses
- b. Modifications necessary for procedure.
- c. Isolation/personnel protection requirements.
- d. Monitoring patient condition throughout exam.
- e. Emergency procedures, drugs used.
- f. Need for supports.

#### **5. RADIATION PROTECTION**

- a. Types of radiation protection devices
- b. Types of radiation monitoring devices
- c. Appropriate use of patient shielding.
- d. Appropriate use of collimation.
- e. Appropriate use of lead aprons.
- f. Appropriate location for radiation monitoring devices.
- g. Appropriate actions for holding patients during exposures.

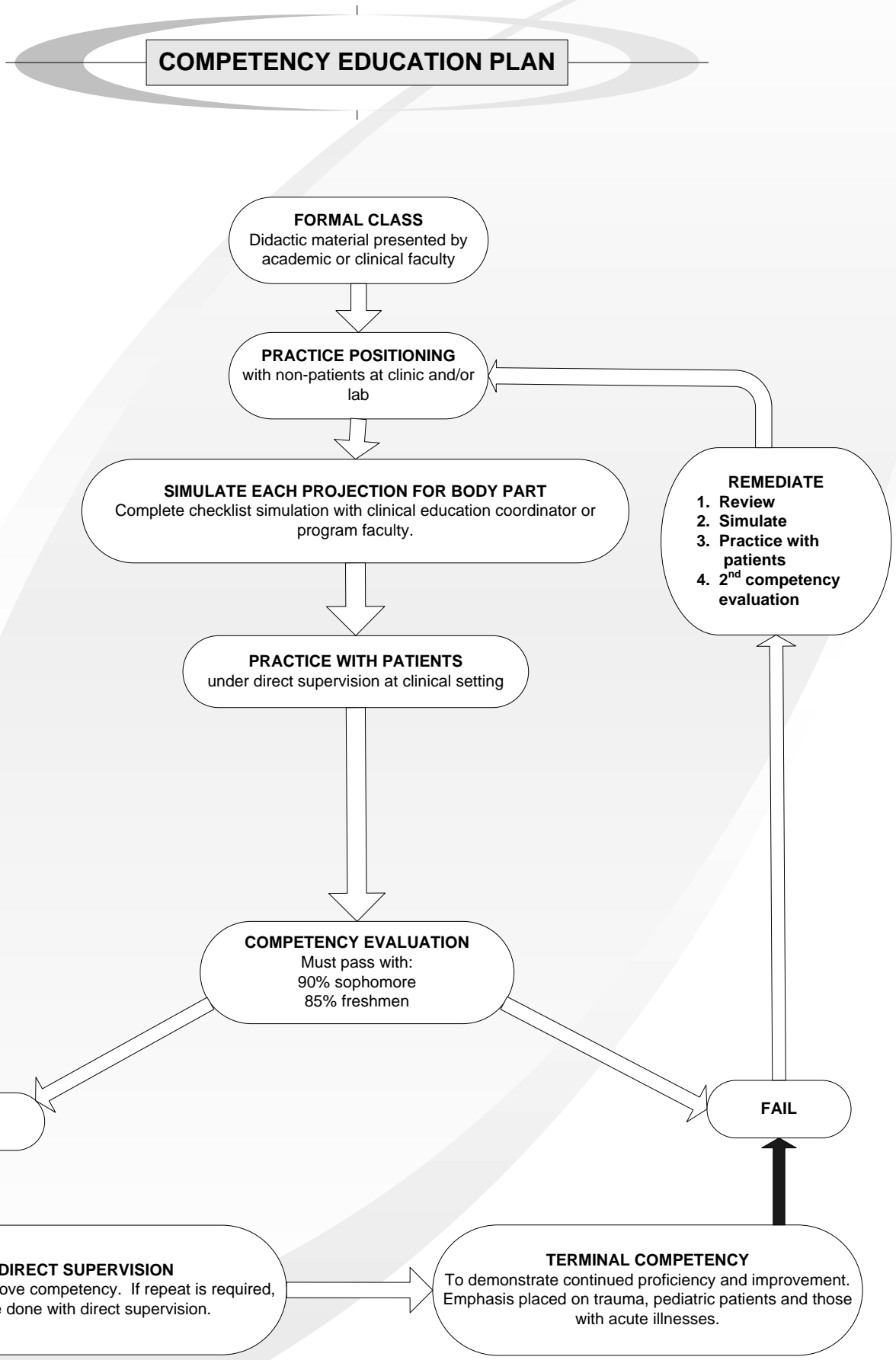
#### **6. COMMUNICATIONS AND INTERACTIONS**

- a. Types of patients.
  - 1. non-English speaking
  - 2. socio-economically poor, middle class or upper class
  - 3. vulnerabilities (fear, stage of illness, new trauma, etc.)
- b. Families.
  - 1. recognizing state of mind (fear, loss etc.)
  - 2. communicating with families (clarity)
- c. Technologist responsibilities.
  - 1. verification of patient
  - 2. verification of procedure, side, part etc.
  - 3. explanation to patient/family
  - 4. clear instructions to patient/family/interpreter
  - 5. respect for privacy/modesty
  - 6. respect for all types of patients
- d. As part of the health care team.
  - 1. respect for instructors, technologists, management, physicians and ancillary personnel
  - 2. pleasant/mature communications and cooperation
  - 3. reliability (attendance, tardiness)
  - 4. organization/follow through on procedures
  - 5. application of critical thinking/problem solving skills
  - 6. patient support services such as family/friends, pastoral care, patient to patient support groups, psychological support groups, hospice, and home care.
  - 7. Identify appropriate interactions between the technologist (student), patient and family.

## **7. FILM EVALUATION AND ANALYSIS**

- a. Film critique.
  1. films hung properly
  2. techniques reviewed
  3. clinical information/patient history
  4. positioning
  5. radiation protection
  6. procedure/findings reviewed
  7. presentation innovations
  8. problem/repeated films reviewed analyzed
  9. suggestions for improvements/corrections to problems
- b. Problem solving scenarios
- c. Review
  1. worksheets
  2. games
  3. questions

XRT 151, 152, 153, 251, 252  
10/03 PAP Rev. 12/03



## **STRUCTURE OF CLINICAL EDUCATION FOR RADIOLOGIC TECHNOLOGY**

Clinical Education for Radiologic Technology students at Monroe Community College is divided into five meaningful required units and one supplemental unit if needed.

1. XRT 151 Orientation/Clinical Education I, First Semester Freshmen
2. XRT 152 Clinical Education II, Second Semester Freshmen
3. XRT 153 Clinical Education III, Summer Session Freshmen
4. XRT 251 Clinical Education IV, First Semester Sophomore
5. XRT 252 Clinical Education V, Second Semester Sophomore
6. XRT 253 Supplemental Clinical Education, Optional Summer Session Sophomore

### **References for all Clinical Education Courses**

Ballinger, Phillip W. and Eugene Frank Merrill's Atlas of Radiographic Positions and Radiologic Procedures, latest edition, Mosby.

Clinical Education Booklet, MCC Radiologic Technology Program.

Ehrlich, Ruth Ann, McCloskey and Daly Patient Care in Radiography, latest edition, Mosby.

Standards for an Accredited Educational Program in Radiologic Sciences, Joint Review Committee on Education in Radiologic Technology.

"Standards of Ethics", American Registry of Radiologic Technologists.

"Standards of Practice", American Society of Radiologic Technologists.

Student Orientation Booklet, MCC Radiologic Technology Program.

The Professional Curriculum for Radiography, The American Society of Radiologic Technologists.

## **Student Rotational Assignment**

Clinical Education is assigned on a rotational basis to provide experiences consistent with each students' level of achievement, in three different hospital environments: a large university medical center, a general acute care hospital, and a community hospital. Assignments range from 8 to 12 clinical hours per week during the first year of study and 24 hours per week the second year. The seven week summer session provides full-time experience of 40 hours per week.

Sophomore students are assigned at a private medical imaging center for a 4 to 7 week period and may volunteer for off-hours rotation not to exceed 4 clinical days during XRT 252.

A supplemental summer session may be added the second year to allow time for completion of all clinical competencies required to graduate.

Assignments are at the discretion of the faculty, under the direction of the clinical coordinator(s) and are based on educational need of the individual student.

## **Clinical Education Centers**

### General Acute Care Hospitals

- \* Strong Health - Highland Hospital
- \* Unity Health - Park Ridge Hospital

### University Medical Center

- \* Strong Health - Strong Memorial Hospital
- \* ViaHealth - Rochester General Hospital

### Community Hospital with Acute and Chronic Care Facilities

- \* ViaHealth of Wayne Newark Campus

### Private Imaging Centers (Approval Pending)

- \* Ide Radiology Group PC
  - \* Clinton Crossings
  - \* Park Ridge Professional Building
- \* Lifetime Health - Wilson Center
- \* Rochester Radiology Associates PC - General Hospital Medical Building
- \* University Medical Imaging PC – Clinton Crossings at Lac de Ville

152:Bklt1

9/87, 9/94, 10/96, 12/00, 10/04

**MONROE COMMUNITY COLLEGE**  
**Radiologic Technology Program**

**SUPERVISION - CLINICAL EDUCATION**

**Policy #16**

**FRESHMEN LEVEL SUPERVISION/DIRECT SUPERVISION**

{College Faculty are present at the affiliate(s)}

In accordance with the the JRCERT Standards for An Accredited Educational Program in Radiologic Sciences, direct supervision is defined as a licensed radiographer/clinical instructor actually present for the total radiographic procedures at the specific exposure site. Until a student achieves and documents competency in a given procedure, all clinical assignments shall be carried out under direct supervision of qualified radiographers. The parameters of direct supervision are:

1. The qualified radiographer reviews the request for examinations in relation to the student's achievement;
2. The qualified radiographer evaluates the condition of the patient in relation to the student's achievement;
3. A qualified radiographer is present during the conduct of the examination; and
4. The qualified radiographer reviews and approves the radiographs by initialing the request or quality control mechanism.

Also, unsatisfactory radiographs shall be repeated only in the presence of a qualified radiographer, regardless of the student's level of competency.

**SOPHOMORE LEVEL SUPERVISION/INDIRECT SUPERVISION**

In accordance with the JRCERT Standards for an Accredited Educational Program in Radiologic Sciences, indirect supervision is defined as that supervision provided by a qualified radiographer (and/or clinical instructor) immediately available to assist students regardless of the level of student achievement.

The clinical instructor is present at the affiliate to review the request for examinations, evaluate patient condition, assign patients to students, assist students, and evaluate radiographs with the student.

Also, unsatisfactory radiographs shall be repeated only in the presence of a qualified radiographer, regardless of the student's level of competency.

Approved by the Radiologic Technology Faculty in April, 1985.

**MONROE COMMUNITY COLLEGE  
RADIOLOGIC TECHNOLOGY PROGRAM**

**XRT 151  
Orientation/Clinical Education I**

**DESCRIPTION**

The faculty of the Radiologic Technology Program wish to **welcome** you into the radiologic technology profession. This program offers each participant the opportunity for success and professional satisfaction in this progressive medical specialty.

Course content includes an overview of radiography and its role in health care delivery including specific guidelines, responsibilities, and policies outlined in the following **five** modular sections.

- 1.0 **Orientation to the Program**
- 2.0 **Radiography as a Health Science Profession**
- 3.0 **Professional Ethics**
- 4.0 **Safety Issues**
  - 4.1 **Radiation Safety and Protection**
  - 4.2 **Health Safety Issues/Policies including:**
    - 4.2.1 **Standard Precautions**
    - 4.2.2 **Workplace Safety and Hazardous Materials**
  - 4.3 **Patient transfer, blood pressure analysis, O<sub>2</sub> administration**
  - 4.4 **HIPPA – patient privacy issues**
- 5.0 **Clinical Education I**

**COMPETENCIES - (Modules 1.0-5.0)**

After completing the reading assignments, attending the lectures/laboratory sessions, the student will be able to:

- 1.0 List, identify, and describe the program curriculum, mission statement, goals, expected outcomes, policies and requirements for both didactic and clinical education components.
- 2.0 Develop an understanding of current health care issues; mission, organization and structure of radiology and health care facilities; professional roles and responsibilities of a radiographer; and professional organizations and development activities.
- 3.0 List, identify, and describe professional ethical standards including appropriate key definitions, professional characteristics of radiographer, patients bill of rights, patient consent, confidentiality, professional and institutional liability, misconduct, negligence lawsuits, and the rationale for proper authorization and documentation.

- 4.0 Describe the concepts of safety issues listed in 4.1, 4.2, 4.3.
- 4.1 List, identify, and describe the basic components for radiation safety and protection including the properties of ionizing radiation, biological effect, A.L.A.R.A. concept, personal monitoring, dose limits, pregnancy considerations, collimation, and shielding requirements.
- 4.2 Identify and describe the health safety issues/policies included in the Student Orientation Booklet. (Include policies #6, 8, 18, 19, 20, 28, 31, 32, 33)
- List, identify, and describe the standard precautions/infection control rational and performance guidelines recommended for health care workers by the National Center for Disease Control (CDC) (Policy #28). Successful completion of the Standard Precautions/Infection Control post quiz with a grade of "S" (satisfactory) is required for this unit. Understand the right-to-know laws, OSHA requirements and MSDS for hazardous materials found in the workplace.
- 4.3 List, identify, and describe the methods(s) for proper blood pressure analysis, patient transfer guidelines on both ambulatory and unable to assist patients, proper methods of oxygen administration. Successful completion of laboratory competencies with a satisfactory grade of "S" are required for this unit.
- 4.4 Assess patient privacy scenarios for compliance with HIPPA regulations and determine alternatives for non-compliant activities. Successful completion of competency test with a satisfactory grade is required for this unit.
- 5.0 Develop/describe the requirements and standards of Clinical Education I.
- 5.1 Develop an appreciation of the role of radiographer under limited clinical participation which includes observation, assisting the radiographer, and actual practice/performance under the direct supervision of the program's faculty or qualified radiographer. The student will identify and develop professional behavior standards regarding:
- \* Organization
  - \* Time management
  - \* Communication
  - \* Interpersonal relationships
  - \* Motivation
  - \* Situational assessment
  - \* Professional ethics
  - \* Self-confidence
  - \* Retention of knowledge
- 5.2 Identify the requirements and policies related to clinical education by reviewing policies in the Student Orientation Booklet listed below:
- \* Policy #1 Attendance regarding Clinical Education
  - \* Policy #7 Dress Code
- 5.3 Identify additional requirements, etc., such as:

- \* Policy #16 Supervision - Clinical Education including repeat film requirements
- \* Assessment of professional growth form
- \* Hospital location/maps and directions/parking

### **COURSE REQUIREMENTS**

- \* Completion of all reading and homework assignments on time. No late assignments will be accepted without prior arrangement.
- \* Regular attendance and punctuality
- \* Active class and clinical participation
- \* Completion of all listed evaluation criteria including homework, quizzes, examinations, written synopsis, and successful completion of laboratory practical competencies on blood pressure analysis, patient transfer, and O<sub>2</sub> administration with a grade of "S" (satisfactory).
- \* Completion of the Standard Precautions/Infection Control post quiz with a grade of "S" (satisfactory).

### **ATTENDANCE**

All program policies set forth in the Student Orientation Booklet are in effect in this class. In general, attendance is required at each class, and clinical education site and will be taken into account in evaluating the final course grade. Attendance will be excused for (a) death of a close relative, (b) religious holiday, (c) other circumstance beyond the control of the student. In the event that an absence is unavoidable, please make arrangements with your professor to get copies of handouts and assignments.

### **GRADING**

20% - Module #2

40% - Module #3

40% - Module #4

Clinical Attendance requirements

100%

Successful completion of HIPPA, standard precautions, blood pressure evaluation, O<sub>2</sub> administration and patient transfer competencies with a grade of "**S**" (satisfactory) is required for successful completion of this course.

### **Clinical Education I**

Since Clinical Education I includes limited clinical participation, no formal grade will be given. The student may perform competency tests on those parts covered in lecture and where lab competency testing was successfully completed. These grades will be included in the XRT 152 clinical competency grade. Each student will receive an evaluation called "**Assessment of Professional Growth**" in order to provide awareness of acceptable and competent behavior. Attendance at all clinical education sites will be documented and assessed. By 9:00 am the student must call the clinical instructor in the event of an absence or tardy. If the student fails to call in, there will be a deduction of 2 points from the final average of XRT 151. If the student is absent there will be a 3-point deduction from the final average of XRT 151. Tardy or early departure hours will result in a ½ point deduction per hour from the final average of XRT 151.

### **TEXTBOOKS**

Ehrlich, McCloskey and Daly: Patient Care in Radiology, Latest Edition, Mosby.

Ballinger and Frank: Merrill's Atlas of Radiographic Positions and Radiologic Procedures, Latest Edition, Volumes I, II, III, Mosby.

Statkiewicz - Shener, Visconti, and Ritenour: Radiation Protection In Medical Radiography, Latest Edition, Mosby 2002.

Wilson. Ethics and Basic Law for Medical Imaging Professionals. F.A. Davis.

In addition to the required texts listed above, each student will receive the following documents:

- \* Radiologic Technology Program's Student Orientation Booklet
- \* N.Y.S. Sanitary Code Chapter 1, Part 16, Ionizing Radiation - Albany, NY 12203-3394
- \* Hospital specific handouts including routine diagnostic procedures.

Attachments (2)

- Policy #16 Supervision-Clinical Education
- Assessment of professional growth

## **XRT 152 Clinical Education II**

### **PREREQUISITES**

XRT 111 and 151 with a grade of "C" or better.

### **DESCRIPTION**

This course is designed for second semester freshmen students to experience day-to-day real life situations in health care which are essential to foster a professional demeanor, compassionate behavior, desirable work ethic and the skills necessary to perform radiographic procedures and produce radiographic images for diagnosis. This clinical component of the curriculum is structured to coordinate with the competencies learned in XRT 111 and XRT 122. It is a continuation of XRT 151 with expectation of clinical skills development.

Clinical Participation: The student actively assists the radiographer in radiographic examinations. As the student gains experience in various procedure(s), he/she gradually moves through mastery learning toward independent clinical performance. During this mastery learning process, the student is actually performing a variety of examinations under direct supervision of clinical faculty or a licensed radiographer. After successful competency testing, the student may perform the exam under indirect supervision with the permission of the clinical faculty. Repeat radiographs are always performed under the direct supervision of clinical faculty or a licensed radiographer.

### **TYPE OF SUPERVISION**

Direct supervision by clinical faculty/licensed radiographer(s) --see Department Policy #16 for specifics.

### **TEXTBOOKS/REFERENCES**

Clinical Education Booklet, Student Orientation Booklet, clinical education center procedures and information.

### **GRADING/EVALUATION**

Grade worksheets are used to determine clinical education grades based on the following criteria and percentages. Clinical faculty shall review the completed worksheet with the student and have him/her sign the form as an indication that the worksheet was reviewed by both parties. The student signature does not necessarily indicate student's agreement with the grade.

#### 30% Area Evaluations

At the start of each semester, the student will be given a list of the areas of clinical assignment in which performance will be evaluated by the clinical faculty or a licensed radiographer. Area evaluations indicate the performance level of the student at the end of a clinical rotation through an area or room. It provides an indication of skills consistently performed/mastered, skills being developed, and skills that need more attention by the student. Area evaluations are to be completed by a licensed radiographer or clinical faculty with the exception of equipment mastery, patient services and public/patient safety forms which are completed by the student. An Area Evaluation must be obtained from an evaluator by the student, signed and filed in the student's clinical portfolio.

### 30% Clinical Competency Tests

Clinical competency is achieved through a mastery learning structure where students are required to observe, practice and master skills prior to competency testing. A student may perform as many (mastery learning) practice examinations as he/she feels comfortable with doing, prior to competency testing. Following the mastery learning plan, the student may competency test. A terminal competency test is required after successfully completing all competency tests in a particular radiographic procedures area as grouped on the competency tests checklist.

Competency testing may be evaluated by clinical faculty or clinical staff radiographers. **A total of at least five (5) mandatory, elective or terminal competency tests** must be successfully completed in XRT 152. There is no maximum limit of tests that may be completed during the semester. The faculty recommends a goal of completing more than the minimum number of competency tests in order to assure completion of the required sixteen (16) terminal, fifteen (15) elective and one (1) critical thinking competency tests by XRT 252.

Failure on a competency test will require that the student begin the mastery learning cycle again as outlined in the "Remedial Criteria for Clinical Competency Re-testing". The failing grade will be averaged with all other competency tests completed and will not qualify to be included in the count of the minimum number of competency tests completed for the semester. Successful completion of less than the minimum number of competency tests by the end of the semester indicates that the student has not obtained the minimum level of expected performance; a "D" or "F" grade will be recorded on the transcript and the student will not be able to continue in the program.

### 15% Film Critique Assessment

The student shall evaluate at least two sets of radiographic images in formal/informal film critique sessions during the semester. The faculty recommends a goal of completing more than two film critiques in order to assure completion of the required ten (10) by XRT 252.

### 15% Assessment of Professional Growth

Each assigned clinical faculty shall evaluate the student's professional growth in the affective domain at mid-term and at the end of the semester.

### 10% Dress code compliance

Compliance with the dress code is expected. Failure to comply will result in loss of grade points.

### Attendance

Tardiness and absenteeism result in a scaled loss of grade points, based on one-half point per hour or three points per day and two points per failure to call the clinical faculty. An official written excuse may be required. One clinical day of banked time will be available for the semester.

---

100% XRT 152 Clinical Education II Grade

## COMPETENCIES

At the completion of Clinical Education II, the student will be able to complete the following.

- 1.0 Apply the competencies learned in XRT 151 and XRT 111 courses: radiographic positioning I, radiographic exposure I, medical terminology, professional ethics, patient care, radiographic processing, professional ethics, radiation protection/safety issues and roles of radiologic sciences professionals.
- 2.0 Competently perform the basic routine procedures evaluated during the semester's clinical competency tests and develop mastery in performing procedures indicated on the "Guidelines for Clinical Competency" chart.
- 3.0 Identify and manipulate equipment, supplies and set up for basic routine exams in assigned radiographic areas. (See assigned area evaluations and room assignments.)
- 4.0 Process radiographic film accurately using the darkroom/daylight facilities: flasher, cassette, film bin, automatic processor.
- 5.0 Identify the patient services available within the department.
- 6.0 Identify the public/patient safety procedures within the clinical education center.
- 7.0 Utilize the proper clerical protocols for the patient's medical record.
- 8.0 Begin to develop image evaluation skills at formal/informal film critique sessions.
- 9.0 Strive toward developing attitudes and skills needed as an effective radiologic science professional.

## COURSE REQUIREMENTS

- \* Attendance and punctuality are expected at every clinical class.
- \* Prompt notification of absence by calling the clinical faculty is required. An official written excuse may be required.
- \* Active participation in clinical activities is expected.
- \* A professional and respectful demeanor toward patients, their family members, hospital staff, classmates and faculty is expected.
- \* A minimum of three successful competency tests or one terminal competency, and 80% of assigned area evaluations must be completed in order to obtain a grade of "C" or better.
- \* A grade of "C" or better is required in order to remain in the program.
- \* Develop and maintain student's clinical portfolio.

EMD/ns/bl

152:O1

6/87, 1/90, 9/93, 10/96, 2/99, 4/99, 12/00, 11/02, 10/04

## **XRT 153 Clinical Education III**

### **PREREQUISITES**

XRT 122 and 152 with a grade of "C" or better; PHY 141.

### **DESCRIPTION**

This course is designed for first summer session freshmen students to experience day-to-day real life situations in health care which are essential to foster a professional demeanor, compassionate behavior, desirable work ethic and the skills necessary to perform radiographic procedures and produce radiographic images for diagnosis. This clinical component of the curriculum is structured to coordinate with the competencies learned in XRT 111 and XRT 122. It is a continuation of XRT 152 with greater expectation of clinical skills development in standard routine procedures.

Clinical Participation: The student actively assists the radiographer in radiographic examinations. As the student gains experience in various procedure(s), he/she gradually moves through mastery learning toward independent clinical performance. During this mastery learning process, the student is actually performing a variety of examinations under direct supervision of clinical faculty or a licensed radiographer. After successful competency testing, the student may perform the exam under indirect supervision with the permission of the clinical faculty. Repeat radiographs are always performed under the direct supervision of clinical faculty or a licensed radiographer.

### **TYPE OF SUPERVISION**

Direct supervision by clinical faculty/licensed radiographer(s) --see Department Policy #16 for specifics.

### **TEXTBOOKS/REFERENCES**

Clinical Education Booklet, Student Orientation Booklet, clinical education center procedures and information.

### **GRADING/EVALUATION**

Grade worksheets are used to determine clinical education grades based on the following criteria and percentages. Clinical faculty shall review the completed worksheet with the student and have him/her sign the form as an indication that the worksheet was reviewed by both parties. The student signature does not necessarily indicate student's agreement with the grade.

#### 30% Area Evaluations

At the start of the summer session, the student will be given a list of the areas of clinical assignment in which performance will be evaluated by the clinical faculty or a licensed radiographer. Area evaluations indicate the performance level of the student at the end of a clinical rotation through an area or room. It provides an indication of skills consistently performed/mastered, skills being developed, and skills that need more attention by the student. Area evaluations are to be completed by a licensed radiographer or clinical faculty with the exception of equipment mastery, patient services and public/patient safety forms which are completed by the student. An Area Evaluation must be obtained from an evaluator by the student, signed and filed in the student's clinical portfolio.

## XRT 153 Clinical Education III

### Page 2

#### 30% Clinical Competency Tests

Clinical competency is achieved through a mastery learning structure where students are required to observe, practice and master skills prior to competency testing. A student may perform as many (mastery learning) practice examinations as he/she feels comfortable with doing, prior to competency testing. Following the mastery learning plan, the student may competency test. A terminal competency test is required after successfully completing all competency tests in a particular radiographic procedures area as grouped on the competency tests checklist. Competency testing may be evaluated by clinical faculty or clinical staff radiographers. **At least fifteen (15) mandatory, elective, or terminal competency tests** must be successfully completed in XRT 153. There is no maximum limit of tests that may be completed during the semester. The faculty recommends a goal of completing more than the minimum number of competency tests in order to assure completion of the required sixteen (16) terminal, fifteen (15) elective and one (1) critical thinking competency tests by XRT 252

Failure on a competency test will require that the student begin the mastery learning cycle again as outlined in the "Remedial Criteria for Clinical Competency Re-testing". The failing grade will be averaged with all other competency tests completed and will not qualify to be included in the count of the minimum number of competency tests completed for the summer session. Successful completion of less than the minimum number of competency tests by the end of the summer session indicates that the student has not obtained the minimum level of expected performance; a "D" or "F" grade will be recorded on the transcript and the student will not be able to continue in the program.

#### 15% Film Critique Assessment

The student shall evaluate at least two sets of radiographic images in formal film critique sessions during the summer session. The faculty recommends a goal of completing more than two film critiques in order to assure completion of the required ten (10) by XRT 252.

#### 15% Assessment of Professional Growth

Each assigned clinical faculty shall evaluate the student's professional growth in the affective domain at the end of the summer session.

#### 10% Dress code compliance

Compliance with the dress code is expected. Failure to comply will result in loss of grade points.

#### Attendance

Tardiness and absenteeism result in a scaled loss of grade points, based on one-half point per hour or three points per day and two points per failure to call the clinical faculty. An official written excuse may be required. One clinical day of banked time will be available for the semester.

---

100% XRT 153 Clinical Education III Grade

## XRT 153 Clinical Education III

Page 3

### COMPETENCIES

At the completion of Clinical Education III, the student will be able to complete the following.

- 1.0 Apply the competencies learned in XRT 152 and XRT 122 courses: radiographic positioning II; radiographic exposure II; pediatric radiography; radiography of the skull, sinuses and temporal bone; and contrast media.
- 2.0 Competently perform the basic routine procedures evaluated during the semester's clinical competency tests and develop mastery in performing procedures indicated on the "Guidelines for Clinical Competency" chart.
- 3.0 With progressing efficiency manipulate equipment and set up for standard routine procedures in assigned radiographic areas. (See assigned area evaluations and room assignments.)
- 4.0 Process radiographic film accurately using the darkroom/daylight facilities or digital imaging: flasher, cassette, film bin, automatic processor.
- 5.0 Identify and assist patients in the use of patient services available within the department.
- 6.0 Identify and follow public/patient safety procedures within the clinical education center.
- 7.0 Utilize the proper clerical protocols for the patient's medical record.
- 8.0 Continue to develop image evaluation skills at formal film critique sessions.
- 9.0 Strive toward developing attitudes and skills needed as an effective radiologic science professional.
- 10.0 Competently use the Pigg-o-stat and position a pediatric patient for chest radiography.

### COURSE REQUIREMENTS

- \* Attendance and punctuality are expected at every clinical class.
- \* Prompt notification of absence by calling the clinical faculty is required. An official written excuse may be required.
- \* Active participation in clinical activities is expected.
- \* A professional and respectful demeanor toward patients, their family members, hospital staff, classmates and faculty is expected.
- \* A minimum of fifteen mandatory and/or elective competency tests five or five terminal competencies must be successful completed with a grade of "C" or better, and 80% of assigned area evaluations must be completed in order to obtain a grade of "C" or better.
- \* A grade of "C" or better is required in order to remain in the program.
- \* Develop and maintain student's clinical portfolio.

EMD/ns/bl

153:01

6/87, 1/90, 9/93, 10/96, 2/99, 4/99, 12/00, 11/02, 10/0

**XRT 251**  
Clinical Education IV

**PREREQUISITES**

XRT 153 with a grade of "C" or better.

**DESCRIPTION**

This course is designed for first semester sophomore students to experience day-to-day real life situations in health care that are essential to foster a professional demeanor, compassionate behavior, desirable work ethic and the skills necessary to perform radiographic procedures and produce radiographic images for diagnosis. This clinical component of the curriculum is structured to coordinate with the competencies learned in XRT 111, XRT 122 and XRT 211. It is a continuation of XRT 153 with greater expectation of clinical skills development.

Clinical Participation: The student actively assists the radiographer in radiographic examinations. As the student gains experience in various procedure(s), he/she gradually moves through mastery learning toward independent clinical performance. During this mastery learning process, the student is actually performing a variety of examinations under direct supervision of clinical faculty or a licensed radiographer. After successful competency testing, the student may perform the exam under indirect supervision with the permission of the clinical faculty. Repeat radiographs are always performed under the direct supervision of clinical faculty or a licensed radiographer.

**TYPE OF SUPERVISION**

Indirect supervision by clinical faculty/licensed radiographer(s) --see Department Policy #16 for specifics.

**TEXTBOOKS/REFERENCES**

Clinical Education Booklet, Student Orientation Booklet, clinical education center procedures and information.

**GRADING/EVALUATION**

Grade worksheets are used to determine clinical education grades based on the following criteria and percentages. Clinical faculty shall review the completed worksheet with the student and have him/her sign the form as an indication that the worksheet was reviewed by both parties. The student signature does not necessarily indicate student's agreement with the grade.

30% Area Evaluations

At the start of each semester, the student will be given a list of the areas of clinical assignment in which performance will be evaluated by the clinical faculty or a licensed radiographer. Area evaluations indicate the performance level of the student at the end of a clinical rotation through an area or room. It provides an indication of skills consistently performed/mastered, skills being developed, and skills that need more attention by the student. Area evaluations are to be completed by a licensed radiographer or clinical faculty with the exception of equipment mastery, patient services and public/patient safety forms that are completed by the student. An Area Evaluation must be obtained from an evaluator by the student, signed and filed in the student's clinical portfolio.

### 30% Clinical Competency Tests

Clinical competency is achieved through a mastery learning structure where students are required to observe, practice and master skills prior to competency testing. A student may perform as many (mastery learning) practice examinations as he/she feels comfortable with doing, prior to competency testing. Following the mastery learning plan, the student may competency test. A terminal competency test is required after successfully completing all competency tests in a particular radiographic procedures area as grouped on the competency tests checklist. Competency testing may be evaluated by clinical faculty or clinical staff radiographers. **At least fifteen (15) mandatory, elective, or terminal competency tests** must be successfully completed in XRT 251. There is no maximum limit of tests that may be completed during the semester. The faculty recommends a goal of completing more than the minimum number of competency tests in order to assure completion of the required sixteen (16) terminal, fifteen (15) elective and one (1) critical thinking competency tests by XRT 252.

Failure on a competency test will require that the student begin the mastery learning cycle again as outlined in the "Remedial Criteria for Clinical Competency Re-testing". The failing grade will be averaged with all other competency tests completed and will not qualify to be included in the count of the minimum number of competency tests completed for the semester. Successful completion of less than the minimum number of competency tests by the end of the semester indicates that the student has not obtained the minimum level of expected performance; a "D" or "F" grade will be recorded on the transcript and the student will not be able to continue in the program.

### 15% Film Critique Assessment

The student shall evaluate at least two sets of radiographic images in formal film critique sessions during the semester. The faculty recommends a goal of completing more than two film critiques in order to assure completion of the required ten (10) by XRT 252.

### 15% Assessment of Professional Growth

Each assigned clinical faculty shall evaluate the student's professional growth in the affective domain at mid-term and at the end of the semester.

### 10% Dress code compliance

Compliance with the dress code is expected. Failure to comply will result in loss of grade points.

### Attendance

Tardiness and absenteeism result in a scaled loss of grade points, based on one-half point per hour or three points per day and two points per failure to call the clinical faculty. An official written excuse may be required. One clinical day of banked time will be available for the semester.

---

100% XRT 251 Clinical Education IV Grade

## XRT 251 Clinical Education IV

Page 3

### COMPETENCIES

At the completion of Clinical Education IV, the student will be able to complete the following.

- 1.0 Apply the competencies learned in XRT 153 especially positioning, procedures, exposure, terminology, ethics, patient care, processing, patient education, protection and safety, image evaluation, and own role as a radiologic sciences professional.
- 2.0 Competently perform the advanced procedures evaluated during the semester's clinical competency tests and develop mastery in performing procedures indicated on the "Guidelines for Clinical Competency" chart.
- 3.0 Identify and manipulate equipment, supplies and set up for routine and advanced exams in assigned radiographic areas. (See assigned area evaluations and room assignments.)
- 4.0 Process radiographic film accurately using the darkroom/daylight facilities/digital imaging: flasher, cassette, film bin, automatic processor.
- 5.0 Identify the patient services available within the department.
- 6.0 Identify the public/patient safety procedures within the clinical education center.
- 7.0 Utilize the proper clerical protocols for the patient's medical record.
- 8.0 Continue to develop image evaluation skills at formal/informal film critique sessions.
- 9.0 Strive toward developing attitudes and skills needed as an effective radiologic science professional.

### COURSE REQUIREMENTS

- \* Attendance and punctuality are expected at every clinical class.
- \* Prompt notification of absence by calling the clinical faculty is required. An official written excuse may be required.
- \* Active participation in clinical activities is expected.
- \* A professional and respectful demeanor toward patients, their family members, hospital staff, classmates and faculty is expected.
- \* A minimum of fifteen mandatory and/or elective competency tests or five terminal competencies must be successfully completed with a grade of "C" or better, and 80% of assigned area evaluations must be completed in order to obtain a grade of "C" or better.
- \* A grade of "C" or better is required in order to remain in the program.
- \* Develop and maintain student's clinical portfolio.

EMD/ns/bl

251:01

6/87, 1/90, 9/93, 10/96, 2/99, 4/99, 12/00, 11/02, 10/04

## **XRT 252**

### **Clinical Education V**

#### **PREREQUISITES**

XRT 211, XRT 215 and XRT 251 each with a grade of "C" or better.

#### **DESCRIPTION**

This course is designed for second semester sophomore students to experience day-to-day real life situations in health care that are essential to foster a professional demeanor, compassionate behavior, desirable work ethic and the skills necessary to perform radiographic procedures and produce radiographic images for diagnosis. This clinical component of the curriculum is structured to coordinate with the competencies learned in XRT 211. It is a continuation of XRT 251 with greater expectation of clinical skills development and critical thinking skills by evaluating clinical scenarios to problem solve reaching ethical and medically sound decisions using acceptable standards of practice.

Clinical Participation: The student actively assists the radiographer in radiographic examinations. As the student gains experience in various procedure(s), he/she gradually moves through mastery learning toward independent clinical performance. During this mastery learning process, the student is actually performing a variety of examinations under direct supervision of clinical faculty or a licensed radiographer. After successful competency testing, the student may perform the exam under indirect supervision with the permission of the clinical faculty. Repeat radiographs are always performed under the direct supervision of clinical faculty or a licensed radiographer.

#### **TYPE OF SUPERVISION**

Indirect supervision by clinical faculty/licensed radiographer(s) --see Department Policy #16 for specifics.

#### **TEXTBOOKS/REFERENCES**

Clinical Education Booklet, Student Orientation Booklet, clinical education center procedures and information.

#### **GRADING/EVALUATION**

Grade worksheets are used to determine clinical education grades based on the following criteria and percentages. Clinical faculty shall review the completed worksheet with the student and have him/her sign the form as an indication that the worksheet was reviewed by both parties. The student signature does not necessarily indicate student's agreement with the grade.

#### 30% Area Evaluations

At the start of the semester, the student will be given a list of the areas of clinical assignment in which performance will be evaluated by the clinical faculty or a licensed radiographer. Area evaluations indicate the performance level of the student at the end of a clinical rotation through an area or room. It provides an indication of skills consistently performed/mastered, skills being developed, and skills that need more attention by the student. Area evaluations are to be completed by a licensed radiographer or clinical faculty with the exception of equipment mastery, patient services and public/patient safety forms that are completed by the student. An Area Evaluation must be obtained from an evaluator by the student, signed and filed in the student's clinical portfolio.

### 30% Clinical Competency Tests

Clinical competency is achieved through a mastery learning structure where students are required to observe, practice and master skills prior to competency testing. A student may perform as many (mastery learning) practice examinations as he/she feels comfortable with doing, prior to competency testing. Following the mastery learning plan, the student may competency. Competency testing may be evaluated by clinical faculty or clinical staff radiographers. **All remaining competency tests listed on the Clinical Competency Tests Checklist (that have not previously been successfully completed), including the critical thinking competency with a grade of 70 or greater, must be successfully completed in XRT 252.** If the student has not successfully completed all the required competencies/clinical requirements, a grade of "D" or "F" will be recorded on the transcript at the discretion of the faculty. In other words, the student will not graduate from the program. If the student chooses to immediately register for/ enroll in XRT 253 Supplemental Clinical Education for the summer, and successfully completes all required competencies/clinical requirements, then a change of grade for XRT 252 will be submitted along with a grade for XRT 253.

Failure on a procedural competency test will require that the student begin the mastery learning cycle again as outlined in the "Remedial Criteria for Clinical Competency Re-testing". The failing grade will be averaged with all other competency tests completed. A failing grade on the critical thinking competency test will require a student to register for XRT 253 in order to graduate. The critical thinking competency test will be administered only once during the XRT 252 semester.

### 15% Film Critique Assessment

The student shall evaluate radiographic images in all remaining categories of film critique assessments (that have not previously been completed) during the semester as listed on the Clinical Competency Tests Checklist. If the student has not successfully completed all the required film critique assessments/graduate outcomes, a grade of "D" or "F" will be recorded on the transcript at the discretion of the faculty. In other words, the student will not graduate from the program. If the student chooses to immediately register for/ enroll in XRT 253 Supplemental Clinical Education for the summer, and successfully completes all required film critique assessments/graduate outcomes, then a change of grade for XRT 252 will be submitted along with a grade for XRT 253.

### 15% Assessment of Professional Growth

Each assigned clinical faculty shall evaluate the student's professional growth in the affective domain at mid-term and at the end of the semester.

### 10% Dress code compliance

Compliance with the dress code is expected. Failure to comply will result in loss of grade points.

### Attendance

Tardiness and absenteeism result in a scaled loss of grade points, based on one-half point per hour or three points per day and two points per failure to call the clinical faculty. An official written excuse may be required. One clinical day of banked time will be available for the semester.

### **COMPETENCIES**

At the completion of Clinical Education V, the student will be able to complete the following.

- 1.0 Apply the competencies learned in XRT 251 and XRT 211 especially positioning, procedures, exposure, ethics, patient care and education, processing, protection and safety, image evaluation, role of radiologic sciences professional, facial bone radiography, and radiation biology.
- 2.0 Competently perform the advanced procedures evaluated during the semester's clinical competency tests and develop mastery in performing procedures indicated on the "Guidelines for Clinical Competency" chart.
- 3.0 Identify and manipulate equipment, supplies and set up for routine and advanced exams in assigned radiographic areas, including mastery of the C-arm. (See assigned area evaluations and room assignments.)
- 4.0 Process radiographic film accurately using the darkroom/daylight facilities or digital imaging: flasher, cassette, film bin, automatic processor.
- 5.0 Competently assist patients with patient services available within the department.
- 6.0 Identify the public/patient safety procedures within the clinical education center.
- 7.0 Utilize the proper clerical protocols for the patient's medical record.
- 8.0 Demonstrate image evaluation skills at formal/informal film critique sessions.
- 9.0 Demonstrate attitudes and skills needed as an effective radiologic science professional.
- 10.0 Demonstrate problem solving and critical thinking skills necessary to perform effectively in today's health care environment.

## **COURSE REQUIREMENTS**

- \* Attendance and punctuality are expected at every clinical class.
- \* Prompt notification of absence by calling the clinical faculty is required. An official written excuse may be required.
- \* Active participation in clinical activities is expected.
- \* A professional and respectful demeanor toward patients, their family members, hospital staff, classmates and faculty is expected.
- \* Successful completion of all remaining mandatory/elective and terminal competency tests as listed on the Clinical Competency Test Checklist, successful completion of critical thinking competency test, completion of all categories of film critique assessments as listed on the Clinical Competency Test Checklist, and 80% of assigned area evaluations must be completed in order to obtain a grade of "C" or better. Also successful completion of vital sign, O2, CPR certification, sterile technique, venipuncture, and patient transfer competency requirements must be attained.
- \* A grade of "C" or better is required in order to graduate. Should the student receive less than a "C" grade, he/she may immediately register for/enroll in XRT 253 Supplemental Clinical Education for summer and successfully complete all required competencies/graduate outcomes (required in XRT 252). A change of grade for XRT 252 will be submitted along with a grade for XRT 253.
- \* Complete and submit student's clinical portfolio.

EMD/ns/bl

252:01

6/87, 1/90, 9/93, 10/96, 2/99, 4/99, 12/00, 11/02, 10/04

**XRT 253**  
**Supplemental Clinical Education**

**PREREQUISITES**

Permission of the Radiologic Technology Program Director.

**DESCRIPTION**

This is not a required course. It is designed as an extension of the clinical education experience for those students who need additional time to successfully complete the required competencies/graduation requirements. It is primarily intended as a supplement to XRT 252 and offered concurrently with XRT 153 (seven week, 40 hours per week summer session.)

Clinical Participation: The student actively assists the radiographer in radiographic examinations. As the student gains experience in various procedure(s), he/she gradually moves through mastery learning toward independent clinical performance. During this mastery learning process, the student is actually performing a variety of examinations under direct supervision of clinical faculty or a licensed radiographer. After successful competency testing, the student may perform the exam under indirect supervision with the permission of the clinical faculty. Repeat radiographs are always performed under the direct supervision of clinical faculty or a licensed radiographer.

**TYPE OF SUPERVISION**

Indirect supervision by clinical faculty/licensed radiographer(s) --see Department Policy #16 for specifics.

**TEXTBOOKS/REFERENCES**

Clinical Education Booklet, Student Orientation Booklet, clinical education center procedures and information.

**VARIABLE CREDIT**

Mutual agreement between the program director and student will be used to determine the credit hour(s) which may vary between 1-to-6 credits.

XRT 253-141 = 1 credit hour = 2 clinical weeks of study

XRT 253-142 = 2 credit hours = 3 clinical weeks of study

XRT 253-143 = 3 credit hours = 4 clinical weeks of study

XRT 253-144 = 4 credit hours = 5 clinical weeks of study

XRT 253-145 = 5 credit hours = 6 clinical weeks of study

XRT 253-146 = 6 credit hours = 7 clinical weeks of study

**GRADING/EVALUATION**

Grade worksheets are used to determine clinical education grades based on the following criteria and percentages. Clinical faculty shall review the completed worksheet with the student and have him/her sign the form as an indication that the worksheet was reviewed by both parties. The student signature does not necessarily indicate student's agreement with the grade.

## XRT 253 Supplemental Clinical Education

### Page 2

#### 30% Area Evaluations

At the start of the summer session, the student will be given a list of the areas of clinical assignment in which performance will be evaluated by the clinical faculty or a licensed radiographer. Area evaluations indicate the performance level of the student at the end of a clinical rotation through an area or room. It provides an indication of skills consistently performed/mastered, skills being developed, and skills that need more attention by the student. Area evaluations are to be completed by a licensed radiographer or clinical faculty with the exception of equipment mastery, patient services and public/patient safety forms which are completed by the student. An Area Evaluation must be obtained from an evaluator by the student, signed and filed in the student's clinical portfolio.

#### 30% Clinical Competency Tests

Clinical competency is achieved through a mastery learning structure where students are required to observe, practice and master skills prior to competency testing. A student may perform as many (mastery learning) practice examinations as he/she feels comfortable with doing, prior to competency testing. Following the mastery learning plan, the student may competency. Competency testing may be evaluated by clinical faculty or clinical staff radiographers. **All remaining competency tests listed on the Clinical Competency Tests Checklist (that have not previously been successfully completed), including the critical thinking competency with a grade of 70 or greater, must be successfully completed in XRT 253.** If the student successfully completes all required competencies/clinical requirements, then a change of grade for XRT 252 will be submitted along with a grade for XRT 253. If the student has not successfully completed all the required competencies/clinical requirements, a grade of "D" or "F" will be recorded on the transcript at the discretion of the faculty. In other words, the student will not graduate from the program.

Failure on a procedural competency test will require that the student begin the mastery learning cycle again as outlined in the "Remedial Criteria for Clinical Competency Re-testing". The failing grade will be averaged with all other competency tests completed.

#### 15% Film Critique Assessment

The student shall evaluate radiographic images in all remaining categories of film critique assessments (that have not previously been completed) as listed on the Clinical Competency Tests Checklist. If the student successfully completes all required film critique assessments/graduate outcomes, then a change of grade for XRT 252 will be submitted along with a grade for XRT 253. If the student has not successfully completed all the required film critique assessments/graduate outcomes, a grade of "D" or "F" will be recorded on the transcript at the discretion of the faculty. In other words, the student will not graduate from the program.

#### 15% Assessment of Professional Growth

Each assigned clinical faculty shall evaluate the student's professional growth in the affective domain at the end of the clinical rotation.

#### 10% Dress code compliance

Compliance with the dress code is expected. Failure to comply will result in loss of grade points.

#### Attendance

Tardiness and absenteeism result in a scaled loss of grade points, based on one-half point per hour or three points per day and two points per failure to call the clinical faculty. An official written excuse may be required.

---

100% XRT 253 Supplemental Clinical Education Grade

## XRT 253 Supplemental Clinical Education

Page 3

### COMPETENCIES

At the completion of Supplemental Clinical Education, the student will be able to:

- 1.0 Apply the competencies learned in XRT 252 and XRT 222 especially in the areas of advanced imaging, quality assurance, equipment analysis, and management.
- 2.0 Competently perform the advanced procedures evaluated during the semester's clinical competency tests and develop mastery in performing procedures indicated for XRT 252 on the "Guidelines for Clinical Competency" chart.
- 3.0 Identify and manipulate equipment, supplies and set up for routine and advanced exams in assigned radiographic areas, including mastery of the C-arm. (See assigned area evaluations and room assignments.)
- 4.0 Process radiographic film accurately using the darkroom/daylight facilities or digital imaging: flasher, cassette, film bin, automatic processor.
- 5.0 Assist patients with the patient services available within the department.
- 6.0 Utilize the public/patient safety procedures within the clinical education center.
- 7.0 Utilize the proper clerical protocols for the patient's medical record.
- 8.0 Demonstrate image evaluation skills at formal/informal film critique sessions.
- 9.0 Demonstrate attitudes and skills needed as an effective radiologic science professional.
- 10.0 Demonstrate problem solving and critical thinking skills necessary to perform effectively in today's health care environment.

### COURSE REQUIREMENTS

- \* Attendance and punctuality are expected at every clinical class.
- \* Prompt notification of absence by calling the clinical faculty is required. An official written excuse may be required.
- \* Active participation in clinical activities is expected.
- \* A professional and respectful demeanor toward patients, their family members, hospital staff, classmates and faculty is expected.
- \* Successful completion of all remaining mandatory/elective and terminal competency tests as listed on the Clinical Competency Test Checklist, successful completion of critical thinking competency test, completion of all categories of film critique assessments as listed on the Clinical Competency Test Checklist, and 80% of assigned area evaluations must be completed in order to obtain a grade of "C" or better. Successful completion of vital sign, O2, CPR certification, sterile technique, venipuncture, and patient transfer competency requirements must be attained.
- \* A grade of "C" or better is required in order to graduate.
- \* Complete and submit student's clinical portfolio.

**Monroe Community College**  
**Radiologic Technology Program**

**Clinical Education Evaluation By Student**

**Affiliate Institution:** \_\_\_\_\_

**Semester:** \_\_\_\_\_ **Class of** \_\_\_\_\_

- 4 = Strongly Agree**
- 3 = Agree**
- 2 = Disagree**
- 1 = Strongly Disagree**

**Please answer each question carefully and thoughtfully.**

**If you do not have an opinion or the question does not apply to you/your situation, please leave it blank.**

1. The clinical education site was conducive to learning? (circle one)

4	3	2	1
SA	A	D	SD

Comments:

List strong points.

1.

2.

3.

List weak points.

1.

2.

3.

## Clinical Education Evaluation by Student

Page 2

2. At your competency level, the quality and quantity of radiographic procedures adequate.

4	3	2	1
SA	A	D	SD

Comments:

3. The clinical faculty facilitated the integration of your activities into the department operation and staff activities.

4	3	2	1
SA	A	D	SD

Comments:

What could be done to help you integrate more easily?

4. The clinical instructor (college faculty or partnership appointee) motivated you to reach your potential educational growth.

4	3	2	1
SA	A	D	SD

Comments:

5. The clinical adjuncts (technologists allowed to evaluate competency) motivated you to reach your potential educational growth.

4	3	2	1
SA	A	D	SD

Comments:

## Clinical Education Evaluation by Student

### Page 3

6. The technical staff at the facility motivated you to reach your potential educational growth.

4	3	2	1
SA	A	D	SD

Comments:

What could have been done to improve this?

7. The direct supervision (prior to competence) while working with patients followed college policy.

4	3	2	1
SA	A	D	SD

Comments:

8. The indirect supervision (after competence) while working with patients followed college policy.

4	3	2	1
SA	A	D	SD

Comments:

9. The repeat policy of the college was followed as directed.

4	3	2	1
SA	A	D	SD

Comments:

10. The pre-clinical conference was useful and productive.

4	3	2	1
SA	A	D	SD

Comments:

# Clinical Education Evaluation by Student

## Page 4

11. The film critique sessions were useful and productive.

4                    3                    2                    1  
SA                    A                    D                    SD

Comments:

12. Your overall clinical experience was satisfactory.

4                    3                    2                    1  
SA                    A                    D                    SD

Comments:

**For Question 13 refer to the following rating scale.**

13. Rate the following adjuncts in terms of the instruction you received.

4 = Excellent    3 = Good        2 = Below Average    1 = Poor

<b>Adjunct</b>	<b>4</b>	<b>3</b>	<b>2</b>	<b>1</b>
1.				
2.				
3.				
4.				
5.				
6.				
7.				
8.				
9.				
10.				
11.				
12.				
13.				
14.				

**Monroe Community College  
Radiologic Technology Program  
Evening Rotation Evaluation**

**Clinical Site** \_\_\_\_\_

1. The evening rotation provided you experience more procedures not typically experienced during the day.

<b>Strongly Agree</b>	<b>Agree</b>	<b>Disagree</b>	<b>Strongly Disagree</b>	<b>Not applicable</b>
4	3	2	1	N/A

Comments:

2. The evening rotation caseload was sufficient in number and variety.

<b>Strongly Agree</b>	<b>Agree</b>	<b>Disagree</b>	<b>Strongly Disagree</b>	<b>Not applicable</b>
4	3	2	1	N/A

Comments:

3. There was sufficient opportunity to gain masteries and competencies.

<b>Strongly Agree</b>	<b>Agree</b>	<b>Disagree</b>	<b>Strongly Disagree</b>	<b>Not applicable</b>
4	3	2	1	N/A

Comments:

4. Until competency was achieved direct supervision was provided.

<b>Strongly Agree</b>	<b>Agree</b>	<b>Disagree</b>	<b>Strongly Disagree</b>	<b>Not applicable</b>
4	3	2	1	N/A

Comments:

5. After competency was achieved indirect supervision was provided.

<b>Strongly Agree</b>	<b>Agree</b>	<b>Disagree</b>	<b>Strongly Disagree</b>	<b>Not applicable</b>
4	3	2	1	N/A

Comments:

6. Rate your overall impression of the evening rotation.

<b>Excellent</b>	<b>Very Good</b>	<b>Good</b>	<b>Poor</b>
4	3	2	1

Comments:

7. How many masteries/competencies (total) did you need entering the evening rotation? (circle one)

0 – 5 = 5                  6-10 = 1                  11-15                  more than 15

8. How many masteries/competencies (total) did you achieve while assigned to the evening rotation? (circle one)

0 – 5 = 5                  6-10 = 1                  11-15                  more than 15



**Monroe Community College  
Radiologic Technology Program  
Office/Clinic Rotation Evaluation**

9. The office/clinic rotation provided you experience more procedures not typically experienced at a hospital.

<b>Strongly Agree</b>	<b>Agree</b>	<b>Disagree</b>	<b>Strongly Disagree</b>	<b>Not applicable</b>
4	3	2	1	N/A

Comments:

10. The office/clinic rotation caseload was sufficient in number and variety.

<b>Strongly Agree</b>	<b>Agree</b>	<b>Disagree</b>	<b>Strongly Disagree</b>	<b>Not applicable</b>
4	3	2	1	N/A

Comments:

11. There was sufficient opportunity to gain masteries and competencies.

<b>Strongly Agree</b>	<b>Agree</b>	<b>Disagree</b>	<b>Strongly Disagree</b>	<b>Not applicable</b>
4	3	2	1	N/A

Comments:

12. Until competency was achieved direct supervision was provided.

<b>Strongly Agree</b>	<b>Agree</b>	<b>Disagree</b>	<b>Strongly Disagree</b>	<b>Not applicable</b>
4	3	2	1	N/A

Comments:

13. After competency was achieved indirect supervision was provided.

<b>Strongly Agree</b>	<b>Agree</b>	<b>Disagree</b>	<b>Strongly Disagree</b>	<b>Not applicable</b>
4	3	2	1	N/A

Comments:

14. Rate your overall impression of the evening rotation.

<b>Excellent</b>	<b>Very Good</b>	<b>Good</b>	<b>Poor</b>
4	3	2	1

Comments:

15. How many masteries/competencies (total) did you need entering the evening rotation? (circle one)

0 – 5                      6-10                      11-15                      more than 15

16. How many masteries/competencies (total) did you achieve while assigned to the evening rotation? (circle one)

0 – 5                      6-10                      11-15                      more than 15

**MONROE COMMUNITY COLLEGE  
Radiologic Technology Program**

**CLINICAL EDUCATION  
MID-TERM GRADE WORKSHEET**

Name \_\_\_\_\_ Semester \_\_\_\_\_ XRT \_\_\_\_\_

Class of \_\_\_\_\_ Date \_\_\_\_\_ Hospital \_\_\_\_\_

Max. Point Value	Category Explanation	Points Earned
30	<p><b>AREA EVALUATIONS</b> Each student must complete 30% of the area evaluations assigned. 30% = 30 points ≥ 25% &lt; 30% = 25 points ≥ 20% &lt; 25% = 20 points &lt;20% = 0 points #Area Evaluations assigned _____, #completed _____, %completed _____.</p>	
30	<p><b>CLINICAL COMPETENCY TESTS</b> Each student must complete all clinical competency requirements as outlined on the checklist during XRT 152 - XRT 252 with no less than the minimum level of expected performance. Mandatory, elective and terminal competency test scores (including failures) will be averaged and multiplied by a factor of .3 to earn a maximum total of 30 points. If no competency tests have been completed by midterm, a score of zero will be recorded. See course syllabus for minimum number of competency requirements. _____ average x .3 = _____ points</p>	
15	<p><b>FILM CRITIQUE ASSESSMENT</b> Each student must successfully complete all ten required film critique examinations during XRT 152 - XRT 252 as listed in the Clinical Education Booklet. Failure to successfully complete the required 10 film critique evaluations by XRT 252 may necessitate the option of the student enrolling in XRT 253 Supplemental Clinical Education to allow time for completion of all evaluations required for graduation. A minimum of 2 film critiques assessments must be completed in XRT 152 - XRT 252 (the faculty recommends completion of 3). 1 evaluation = earned points &lt;1 evaluation = 0 points # evaluations completed _____, Average points earned: _____ x 0.15= _____ points</p>	
15	<p><b>ASSESSMENT OF PROFESSIONAL GROWTH</b> Each student must have a Professional Assessment form completed by each of the assigned professors or designee(s) at midterm. Clinical grade point values will be averaged, if completed by more than one faculty. Total points awarded are 15 plus 1 bonus point, if applicable.</p>	
10	<p><b>DRESS CODE</b> Each student must comply with the dress code. Compliance = 10 points Minor infractions = 5 points Non-compliance = 0 points Area of non-compliance _____</p>	
	<b>Category Explanation</b>	<b>Points</b>

		<b>Deducted</b>
	<p><b>ATTENDANCE</b>            Perfect attendance is expected from 8:00 a.m. - 4:00 p.m. Each absence results in the loss of 3 points. Every occurrence of failure to follow the call-in procedure will result in the loss of 2 points. Every tardiness or occurrence of leaving early will be based on the loss of 1/2 point per hour. An official written excuse may be required. <u>One clinical day</u> of banked time will be available for the semester.            # times: absent _____, failed to call in before 9:00 am _____            # of hours absent due to tardiness and early departure _____.</p>	

Total Pts. Earned \_\_\_\_\_

- Attendance (minus banked clinical day) \_\_\_\_\_

Grade \_\_\_\_\_

COMMENTS:

Grade Earned: \_\_\_\_\_

Evaluator's Signature \_\_\_\_\_ Date \_\_\_\_\_

Student's Signature \_\_\_\_\_ Date \_\_\_\_\_

Student's signature does not necessarily signify agreement with above comments.

EMD/ns/bl  
 152:CE10  
 9/87, 1/89, 12/93, 12/96, 2/99, 4/99, 12/00, 11/02, 10/04

**MONROE COMMUNITY COLLEGE  
Radiologic Technology Program**

**CLINICAL EDUCATION  
FINAL GRADE WORKSHEET**

Name \_\_\_\_\_ Semester \_\_\_\_\_ XRT \_\_\_\_\_

Class of \_\_\_\_\_ Date \_\_\_\_\_ Hospital \_\_\_\_\_

Max. Point Value	Category Explanation	Points Earned
30	<p><b>AREA EVALUATIONS</b>            Each student must complete 80% of the area evaluations assigned.            100% = 30 points            ≥ 90% &lt; 100% = 25 points            ≥ 80% &lt; 90% = 20 points            &lt;80% = 0 points            #Area Evaluations assigned _____, #completed _____, %completed_____.</p>	
30	<p><b>CLINICAL COMPETENCY TESTS</b>            Each student must complete all clinical competency requirements as outlined on the checklist during XRT 152 - XRT 252 with no less than the minimum level of expected performance. Mandatory, elective and terminal competency test scores (including failures) will be averaged and multiplied by a factor of .3 to earn a maximum total of 30 points. For XRT 152 five is the minimum number of competency tests required; for XRT 153, 251 and 252 fifteen is the minimum requirement each semester.            _____ average x .3 = _____ points</p>	
15	<p><b>FILM CRITIQUE ASSESSMENT</b>            Each student must successfully complete all ten required film critique examinations during XRT 152 - XRT 252 as listed in the Clinical Education Booklet. Failure to successfully complete the required 10 film critique evaluations by XRT 252 may necessitate the option of the student enrolling in XRT 253 Supplemental Clinical Education to allow time for completion of all evaluations required for graduation. A minimum of 2 film critique assessments must be completed in XRT 152 - XRT 252 (the faculty recommends completion of 3).            2 evaluation = average of earned points on all film critiques completed            &lt;2 evaluation = 0 points            # evaluations completed _____, Average points earned: _____ x 0.15= _____ points</p>	
15	<p><b>ASSESSMENT OF PROFESSIONAL GROWTH</b>            Each student must have a Professional Assessment form completed by each of the assigned professors or designee(s) at the end of the semester. Clinical grade point values will be averaged, if completed by more than one faculty. Total points awarded are 15 plus 1 bonus point, if applicable.</p>	
10	<p><b>DRESS CODE</b>            Each student must comply with the dress code.            Compliance = 10 points            Minor infractions = 5 points            Non-compliance = 0 points            Area of non-compliance _____</p>	

	Category Explanation	Points Deducted
	<p><b>ATTENDANCE</b>            Perfect attendance is expected from 8:00 a.m. - 4:00 p.m. Each absence results in the loss of 3 points. Every occurrence of failure to follow the call-in procedure will result in the loss of 2 points. Every tardiness or occurrence of leaving early will be based on the loss of 1/2 point per hour. An official written excuse may be required. <u>One clinical day</u> of banked time will be available for the semester.            # times: absent _____, failed to call in by 9:00 am _____            # of hours absent due to tardiness and early departure _____.</p>	

Total Pts. Earned \_\_\_\_\_

- Attendance (minus banked clinical day) \_\_\_\_\_

Grade \_\_\_\_\_

COMMENTS:

Grade Earned: \_\_\_\_\_

Evaluator's Signature \_\_\_\_\_ Date \_\_\_\_\_

Student's Signature \_\_\_\_\_ Date \_\_\_\_\_

Student's signature does not necessarily signify agreement with above comments.

EMD/ns/bl  
 152:CE12  
 9/87, 10/89, 11/89, 12/93, 1/97, 2/99, 4/99, 12/00, 11/02, 10/04

**MONROE COMMUNITY COLLEGE  
Radiologic Technology Program**

**AREA EVALUATION ASSIGNMENTS  
Highland Hospital**

**STUDENT:** \_\_\_\_\_

Assessment of Professional Growth (2 forms from each assigned clinical faculty).

Assigned Clinical Faculty/Designee: \_\_\_\_\_

---

**AREA EVALUATIONS**

You are responsible for collecting one (1) Area Evaluation from each of the following 15 areas (12 areas for XRT 152). The Area Evaluation point accumulation on the mid-term/final grade worksheets are based on your filing all assigned evaluations unless waived by your clinical faculty.

# Evaluations assigned \_\_\_\_\_  
Initials clinical coordinator \_\_\_\_\_

**(Pink) Area Evaluations** (to be completed by supervising R.T.)      **Waived**

Routine  
Fluoro #1  
Fluoro #2  
Chest  
Portable  
Special procedures (excluded XRT 152)  
US (\*exclude XRT 152)  
CT (\*exclude XRT 152)

**(Yellow) Area Evaluations** (to be completed by the student)

Patient Services  
Public/Patient Safety  
Room Equipment Mastery:      Routine, Chest, Fluoro #1, Fluoro #2, 1 Portable

**MONROE COMMUNITY COLLEGE**  
**Radiologic Technology Program**  
**AREA EVALUATION ASSIGNMENTS**  
**ViaHealth of Wayne Newark Campus**

**STUDENT:** \_\_\_\_\_

Assessment of Professional Growth (2 forms from each assigned clinical faculty)

Assigned Clinical Faculty/Designees: \_\_\_\_\_

---

**AREA EVALUATIONS**

You are responsible for collecting one (1) Area Evaluation from each of the following 14 areas (12 areas for XRT 152). The Area Evaluation point accumulation on the mid-term/final grade worksheets are based on your filing all assigned evaluations unless waived by your clinical faculty.

**(Pink) Area Evaluations** (to be completed by supervising R.T.)

**Waived**

Room #1

Room #2

Room #3

Room #4

Portables

CT (\*exclude XRT 152)

US (\*exclude XRT 152)

**(Yellow) Area Evaluations** (to be completed by student)

Patient Services

Public/Patient Safety

Room Equipment Mastery

Room #1

Room #2

Room #3

Room #4

Portable

EMD/ns

152:CE16

9/87, 9/93, 1/97, 10/00

**MONROE COMMUNITY COLLEGE  
Radiologic Technology Program**

**AREA EVALUATION ASSIGNMENT  
Strong Memorial Hospital**

**STUDENT:** \_\_\_\_\_

Assessment of Professional Growth (2 forms from each assigned clinical faculty)

Assigned Clinical Faculty/Designee: \_\_\_\_\_

---

**AREA EVALUATIONS**

You are responsible for collecting one (1) Area Evaluation from each of the following 21 areas. The Area Evaluation point accumulation on the mid-term/final grade worksheets are based on your filing all assigned evaluations unless waived by your coordinating clinical faculty.

**(Pink) Area Evaluations** (to be completed by supervising R.T.)

**Waived**

LOS

GI/GU

Control

Portables

Pediatric

Orthopedics

U.S.

CT

MR

Angio

**(Yellow) Area Evaluations** (to be completed by student)

Patient Services

Public/Patient Safety

Room Equipment Mastery: Room #1, 2, 3, 4, 5, 6, GE in ortho, 1 fluoro room, 1 portable

EMD/ns

152:CE15

9/87, 9/93, 1/97

**MONROE COMMUNITY COLLEGE**  
**Radiologic Technology Program**  
**AREA EVALUATION ASSIGNMENT**  
**Rochester General Hospital**

Assessment of Professional Growth (2 forms from each assigned clinical faculty).

Assigned Professor/Designee: \_\_\_\_\_

Student Name: \_\_\_\_\_

**AREA EVALUATIONS**

You are responsible for collecting one (1) Area Evaluation from each of the following 18 areas (16 areas for XRT 152). The Area Evaluation point accumulation on the mid-term/final grade worksheets are based on your filing all assigned evaluations unless waived by your coordinating clinical faculty.

**(Pink) Area Evaluations** (to be completed by supervising R.T.)

**WAIVED**

Routine Area

GI Area

ED Area

GU Area

Portables

Operating Room

\* CT (\*Exclude for XRT 152)

\* Special Areas (\*Exclude for XRT 152)

**(Yellow) Area Evaluations** (to be completed by student)

Patient Services

Public/Patient Safety

Room Equipment Mastery: room 4, 5, 7, 8, 9, 11, 12, any 1 portable unit.

BG/bl

152:CE38

9/89, 9/92, 9/93, 1/97, 3/97

**MONROE COMMUNITY COLLEGE  
Radiologic Technology Program**

**AREA EVALUATION ASSIGNMENTS  
Park Ridge Hospital**

Assessment of Professional Growth (2 forms from each assigned clinical faculty).

Assigned Clinical Faculty/Designee: \_\_\_\_\_

**AREA EVALUATIONS**

You are responsible for collecting one (1) Area Evaluation from each of the following 14 areas. The Area Evaluation point accumulation on the mid-term/final grade worksheets are based on your filing all assigned evaluations unless waived by your coordinating clinical faculty.

**(Pink) Area Evaluations** (to be completed by supervising R.T.)

**Waived**

Routine  
UGI  
BE  
IVP  
Portable  
US  
Special Procedures

**(Yellow) Area Evaluations** (to be completed by the student)

Patient Services  
Public/Patient Safety  
Room Equipment Mastery:  
    Routine Room  
    IVP Room  
    UGI Room  
    GE Room  
    Mobile Unit

EMD/ns  
152:CE35  
9/87, 9/93, 1/97

**MONROE COMMUNITY COLLEGE  
Radiologic Technology Program**

**Clinical Education  
Radiographic/Fluorographic/Tomographic  
Area Evaluation**

NAME \_\_\_\_\_ SEMESTER \_\_\_\_\_ AREA \_\_\_\_\_  
LAST FIRST

CLASS of \_\_\_\_\_ DATE \_\_\_\_\_ HOSPITAL \_\_\_\_\_

This form is to be completed by the supervising RT and given to the student for filing. **It is an overall appraisal of student performance.** Please check the appropriate response (1, 2, 3) for each student performance competency, or if the performance is not applicable, please write NA.

- 3. consistent performance
- 2. developing skills
- 1. requires attention

	1	2	3
1.0 <u>Interprets radiographic orders and determines appropriate positions/procedures.</u>			
1.1 <u>Interprets medical terminology accurately.</u>			
2.0 <u>Performs effective patient care and communication.</u>			
2.1 <u>Establishes rapport with patient.</u>			
2.2 <u>Demonstrates safe patient lifting and moving.</u>			
2.3 <u>Explains procedures/give appropriate directions.</u>			
2.4 <u>Proper use/handling of contrast agents.</u>			
3.0 <u>Demonstrates knowledge of structure and function of human body.</u>			
4.0 <u>Performs basic radiographic/fluoro procedures.</u>			
4.1 <u>Prepares room for procedures.</u>			
4.2 <u>Positions patient for routine projections.</u>			
4.3 <u>Marks and IDs all films properly.</u>			
4.4 <u>Manipulates equipment effectively.</u>			
5.0 <u>Selects proper exposure factors/control panel settings.</u>			
6.0 <u>Applies proper radiation protection procedures.</u>			
6.1 <u>Demonstrates proper beam limiting.</u>			
6.2 <u>Uses gonadal shielding on patients.</u>			
6.3 <u>Inquires about possible pregnancy.</u>			
7.0 <u>Evaluates radiographs to identify diagnostic quality.</u>			
8.0 <u>Demonstrates critical thinking and problem solving skills.</u>			
8.1 <u>Is capable of working independently.</u>			
8.2 <u>Makes logical decisions regarding the exam and patient.</u>			

Evaluator's Signature \_\_\_\_\_  
 Student's Signature \_\_\_\_\_

Comments (Use reverse side if needed):



**MONROE COMMUNITY COLLEGE  
Radiologic Technology Program**

**Clinical Education  
SPECIAL PROCEDURES**

**COMPETENCIES**

At the completion of a limited rotation of sophomore students in Special Procedures or Operating Room Procedures, the student shall be able to do the following:

- 1.0 Display a professional attitude and appearance.
- 2.0 Assist in comforting and reassuring the patient.
- 3.0 Assist in patient education through explaining the basic procedure and answer simple questions of the patient.
- 4.0 Assist in preparing the patient for the procedure.
- 5.0 Assist the radiographer with the equipment.
- 6.0 Follow sterile procedures and maintain sterile field where applicable.
- 7.0 Apply proper radiation protection procedures.
- 8.0 Identify the basic catheters, guidewires, etc.
- 9.0 Bring and discuss at least one special procedure case to Film Critique. Critique discussion should include:
  - \* Definition of procedure
  - \* Equipment, injection method, contrast and dosage, projections, gowning and protective wear
  - \* Imaging requirements (positioning and exposure)
  - \* Anatomy visualized
  - \* Pathology visualized, if appropriate.
  - \* Clinical information

It is recommended that the student and clinical faculty enlist a Special Procedures technologist to present at least one case (15-30 min) during Film Critique class at least 3 times during the fall and spring semesters.

BJG/ns/bl  
152:CE25  
3/87, rev. 9/92, 9/93, EMD 1/97, 3/97

**MONROE COMMUNITY COLLEGE**  
**Radiologic Technology Program**  
**Clinical Education**  
**Operating Room/Procedures**  
**Area Evaluation**

Name \_\_\_\_\_ Semester \_\_\_\_\_ Area \_\_\_\_\_  
 Last First  
 Class of \_\_\_\_\_ Date \_\_\_\_\_ Hospital \_\_\_\_\_

This form is an overall appraisal of student performance. Please check the appropriate response (1, 2, 3) for each student performance competency, or if the performance is not applicable, please write NA.

- 3. consistent performance**
- 2. developing skills**
- 1. requires attention**

The student is able to:	1	2	3
interpret radiographic orders and diagnostic reports.			
prepare adequate cleansing and garb for OR.			
maintain sterile fields while in OR.			
demonstrate safe practices.			
manipulate C-arm equipment.			
hook-up C-arm and TV equipment.			
energize equipment.			
select appropriate exposure controls for conventional / fluoro modes.			
set up appropriate collimation/cone for examination.			
manipulate and adjust fluoro/digital image.			
apply appropriate radiation protection procedures.			
evaluate radiographs/fluoroscopic images.			
develop rapport with other members of the health care team.			

Evaluator's Signature \_\_\_\_\_

Student's Signature \_\_\_\_\_

Comments: \_\_\_\_\_

**MONROE COMMUNITY COLLEGE**  
**Health Related Professions Department - Radiologic Technology Program**  
**Equipment Mastery**  
**PORTABLE C-ARM UNIT**

Name \_\_\_\_\_ Semester \_\_\_\_\_ Area \_\_\_\_\_  
                     Last                      First  
 Class of \_\_\_\_\_ Date \_\_\_\_\_ Hospital \_\_\_\_\_

This form is to be completed by the student and filed in the clinical education folder for inclusion in the area evaluation point accumulation.

List Type (model #) \_\_\_\_\_  
 List kvP range \_\_\_\_\_  
 List mA range \_\_\_\_\_  
 List Timer range \_\_\_\_\_  
 List Focal spots \_\_\_\_\_  
 List Filtration \_\_\_\_\_

	YES	NO	N/A
Locate On/off switch _____			
Locate Image transfer _____			
Locate Image size control _____			
Locate Digital controls _____			
Locate Connectors to wall outlet _____			

**MANIPULATE C-ARM UNIT**

	YES	NO	N/A
Move unit forward/backward/lock unit _____			
Move unit with tube and intensifier - adjust locks _____			
Move unit vertically - tube and intensifier adjustment locks _____			
Identify all exposure controls/modes of operations _____			
Set up control panel for conventional or fluoroscopic technique _____			
Hook t.v. monitor to C-arm _____			
Connect C-arm to wall with adapters if necessary _____			
Energize unit and t.v. monitor(s) rotate image for viewing! _____			
Set up appropriate collimation/cone for examination _____			
- adjust "mode" selection, image size, noise enhancement controls on t.v. monitor _____			
- make exposures or fluoroscopic image-per request _____			

**OPERATE THE CONTROLS (C-ARM with T.V. MONITOR)**

	YES	NO	N/A
Set conventional technique for:			
- chest(Freeze image on t.v. last image hold-(LIH) _____			
- hip _____			
- abdomen _____			
Set fluoroscopic "mode" appropriate fluoro controls for			
- chest _____			
- hip _____			
- abdomen _____			

**MONROE COMMUNITY COLLEGE**  
**Radiologic Technology Program**  
**Clinical Education**  
**Portable Procedures**  
**Area Evaluation**

Name \_\_\_\_\_ Semester \_\_\_\_\_ Area \_\_\_\_\_  
 Class \_\_\_\_\_ Last \_\_\_\_\_ First \_\_\_\_\_ Date \_\_\_\_\_ Hospital \_\_\_\_\_

This form is overall appraisal of student performance. Please check the appropriate response (1, 2, 3, NA) for each student performance competency.

- 3. consistent performance**
- 2. developing skills**
- 1. requires attention**

The student is able to:	1	2	3	NA
interpret radiographic orders and diagnostic reports.				
obtain adequate Hx. and records on requisition.				
communicate effectively with patient and staff.				
demonstrate safe patient lifting and moving.				
obtain appropriate pregnancy information.				
demonstrate knowledge of human structure and function.				
perform basic radiographic/fluorographic procedures:				
* prepares room for portable procedures.				
* moves portable unit into proper position.				
* positions patient for routine projections.				
* marks and ID's all films properly.				
* manipulates equipment effectively.				
* follows appropriate isolation/surgical asepsis technique.				
* utilizes proper SID.				
* directs CR perpendicular to the cassette.				
select proper exposure factors/control panel settings.				
apply proper radiation protection procedures.				
* demonstrates proper beam limiting.				
* uses gonadal shielding when appropriate.				
* announces "verbal warning" before making exposure.				
* shields self with protective lead apron.				
evaluate radiographs to identify diagnostic quality.				

Evaluator's Signature \_\_\_\_\_

Student's Signature \_\_\_\_\_

Comments: \_\_\_\_\_

\_\_\_\_\_

\_\_\_\_\_

**MONROE COMMUNITY COLLEGE**  
**Radiologic Technology Program**  
**Clinical Education**  
**Portable Equipment Mastery**

Name \_\_\_\_\_ Semester \_\_\_\_\_

Signature \_\_\_\_\_

Class of \_\_\_\_\_ Date \_\_\_\_\_ Hospital \_\_\_\_\_

This form is to be completed by the student and filed in the clinical education portfolio for inclusion in the Area Evaluation point accumulation.

**EQUIPMENT**

Identify the type of portable radiographic/fluorographic equipment.

- List type (model #) \_\_\_\_\_
- List kvP range \_\_\_\_\_
- List mA range \_\_\_\_\_
- List timer range \_\_\_\_\_
- List focal spots \_\_\_\_\_
- List filtration \_\_\_\_\_
- List on/off switch \_\_\_\_\_

**PORTABLE CONTROLS**

	YES	NO	N/A
* Locks - adjust tube laterally, longitudinally and vertically _____			
* Connect electrical cord to wall outlet _____			
* Operate manual and automatic drive controls _____			
* Set collimation _____			
* Set - SID _____			
* Angle tube if appropriate _____			

**CONTROL PANEL OPERATION**

	YES	NO	N/A
Set: kvP, mA, time _____			
Focal spot size _____			
Utilize exposure guide _____			
Activate rotor _____			
Utilize exposure switch _____			
Set up exposure factors for adult PA chest 72" _____			
Set up exposure factors for adult AP abdomen _____			
Set up exposure factors for adult AP hip _____			
Set up exposure factors for adult AP hand _____			

**MONROE COMMUNITY COLLEGE  
Radiologic Technology Program**

**Clinical Education  
AREA EVALUATION  
ULTRASOUND ROTATION**

Name \_\_\_\_\_ Semester \_\_\_\_\_

Class of \_\_\_\_\_ Date \_\_\_\_\_ Hospital \_\_\_\_\_

Please check the appropriate response (Yes, No) or if the performance is not applicable, please check NA.

<b>The student:</b>	<b>Yes</b>	<b>No</b>	<b>N/A</b>
is punctual.			
is professionally attired.			
displays an acceptable attitude toward: patients staff			
communicates effectively with: patients staff			
displays initiative and willingness to learn.			
demonstrates understanding of simple instrumentation principles.			
demonstrates desire to identify imaged structures and anatomy.			
willingly assists sonographer and others.			
demonstrates safe behaviors for self, patient, others.			

Evaluator/Technologist's Signature \_\_\_\_\_

Student's Signature \_\_\_\_\_

Comments: \_\_\_\_\_

\_\_\_\_\_  
\_\_\_\_\_

SOURCE: Broome Community College

EMD/ns

152:CE27 1/87, 1/97

**MONROE COMMUNITY COLLEGE  
Radiologic Technology Program**

**Clinical Education  
ULTRASOUND ROTATION**

**COMPETENCIES**

Upon completion of a limited rotation in the Ultrasound Department, the student shall be able to:

- 1.0 Develop a basic understanding of the instrumentation and imaging procedure of sonography.
- 2.0 Recognize the differences in imaging principles between radiography and sonography.
- 3.0 Maintain a professional attitude and appearance.
- 4.0 Apply basic anatomy principles to images produced.
- 5.0 Assist the sonographer in patient education, preparations, and procedures.
- 6.0 Demonstrate effective communication skills.
- 7.0 Maintain safe procedures toward self, patient and others.

EMD/ns  
152:CE27  
3/87, 1/97



**MONROE COMMUNITY COLLEGE  
Radiologic Technology Program**

**Clinical Education  
CT SCANNING ROTATION**

**COMPETENCIES**

At the completion of a limited rotation in the CT Department, the student shall be able to:

- 1.0 Comfort and reassure the patient.
- 2.0 Explain the basic procedure and answer simple questions of the patient.
- 3.0 Prepare the patient for the procedure.
- 4.0 Assist radiographer with the patients.
- 5.0 Operate routine scan functions if appropriate.
- 6.0 Demonstrate a professional attitude and attire.
- 7.0 Indicate and procedures requiring contrast agents.
- 8.0 Maintain safe procedures to protect self, patient and others.

Source: Broome Community College

BJG/ns  
152:CE28  
Rev. 1/97



**MONROE COMMUNITY COLLEGE  
Radiologic Technology Program**

**Clinical Education  
MR IMAGING ROTATION**

**COMPETENCIES**

At the completion of a limited rotation in the MR Imaging Department, the student shall be able to:

- 1.0 Comfort and reassure the patient.
- 2.0 Explain the basic procedure and answer simple questions of the patient.
- 3.0 Prepare the patient for the procedure.
- 4.0 Assist radiographer with the patients.
- 5.0 Operate routine scan functions if appropriate.
- 6.0 Demonstrate a professional attitude and attire.
- 7.0 Indicate and procedures requiring contrast agents.
- 8.0 Maintain safe procedures to protect self, patient and others.

Source: Broome Community College

BJG/ns  
152:CE26  
3/87, Rev. 1/97

**MONROE COMMUNITY COLLEGE**  
**Radiologic Technology Program**  
**Clinical Education**  
**Patient Services**  
**Area Evaluation**

Name \_\_\_\_\_ Semester \_\_\_\_\_  
Signature \_\_\_\_\_

Class of \_\_\_\_\_ Date \_\_\_\_\_ Hospital \_\_\_\_\_

This form is to be completed by the student and placed in the clinical education portfolio for inclusion in the area evaluation point accumulation.

**PATIENT WAITING AREAS**

List the location of all out-patient waiting areas.

List the location of all in-patient waiting areas.

List the facilities found in an in-patient waiting area.

**DRESSING ROOMS**

List the location of dressing areas.

**EMERGENCY CALL SYSTEM**

List the location of all emergency call systems.

**LINEN**

List the location(s) of all linen supplies.

Explain the system for disposing of contaminated linen or wastes.

**STRETCHERS/WHEELCHAIRS**

Explain where or how you would obtain a stretcher or wheelchairs.

**MONROE COMMUNITY COLLEGE  
Radiologic Technology Program**

**Clinical Education  
Public/Patient Safety  
Area Evaluation**

Name \_\_\_\_\_ Semester \_\_\_\_\_  
Signature \_\_\_\_\_

Class of \_\_\_\_\_ Date \_\_\_\_\_ Hospital \_\_\_\_\_

This form is to be completed by the student and placed in the clinical education portfolio for inclusion in the area evaluation point accumulation.

**OXYGEN SHUT-OFFS**

List the location of all O<sub>2</sub> shut-offs/oxygen tanks within the department.

Explain how to shut down the O<sub>2</sub>.

**FIRE HOSES**

List the location of all fire hoses/blankets in the department.

Explain how to withdraw the hose.

**FIRE ALARM BOXES**

List the location of all alarm boxes within the department.

Explain how one would activate the alarm.

**FIRE DOORS**

List the location of all fire doors.

Explain how they work.

**EXITS**

List all exits from the department.

Explain why the elevators would never be used in a fire.

**FIRE PROCEDURES/DRILLS**

List step-by-step the actions taken in case of a fire.

**PATIENT EMERGENCY**

Define code(s) used.

List the person(s) responsible for initiating a code.

List the action(s) you would take if:  
Your patient fainted.

Where is the location of the nearest ammonia capsule?

Your patient quit breathing/arrested?

**DEPARTMENT NURSING STAFF**

List the procedure for contacting a member of the department nursing staff.

**NEEDLES/SYRINGES**

Describe the method of disposing of contaminated needles and syringes.

**ROOM EQUIPMENT MASTERY  
Area Evaluation**

Name \_\_\_\_\_ Hosp. \_\_\_\_\_

Semester \_\_\_\_\_ XRT \_\_\_\_\_ Class of \_\_\_\_\_ Room # \_\_\_\_\_

Must be completed by students and may be reviewed by evaluating technologist.

**EQUIPMENT**

Type:	Focal Spots:
Kv Range:	Ma Range:
Main Switch Location:	Filtration:
	Inherent:
	Added:

<b>MANIPULATE EACH TUBE</b>	<b>Yes</b>	<b>No</b>	<b>N/A</b>
Transversely			
Center lock to the table			
Longitudinally			
Vertically			
Angle the tube			
Rotate the tube 90 degrees			
Center lock to the upright bucky			
Ready lock at 40" and 72" SID			

<b>MANIPULATE THE TABLE CONTROLS</b>	<b>Yes</b>	<b>No</b>	<b>N/A</b>
Move the table top longitudinally/transversely			
Angle the table upright/Trendelenburg			
Manipulate the bucky tray controls			
Attach/detach the footboard			
Adjust the patient-handles			

<b>OPERATE THE CONTROL PANEL</b>	<b>Yes</b>	<b>No</b>	<b>N/A</b>
Energize each tube-bucky combination			
Energize the AEC			
Collimate using manual controls			
Collimate using PBL			
Operate hand/foot exposure switches			
Program fluoroscopy settings			
Load/unload spot-camera magazine			

**PROVIDE A SUGGESTED TECHNIQUE ON AN AVERAGE PATIENT FOR EACH OF THE FOLLOWING:**

Barium Enema decubitus:	Kv	MaS	SID	Grid	Screen/Film
Non-grid extremity:	Kv	MaS	SID	Grid	Screen/Film
72" grid Chest:	Kv	MaS	SID	Grid	Screen/Film
KUB:	Kv	MaS	SID	Grid	Screen/Film
Nephrotomo:	Kv	MaS	SID	Grid	Screen/Film

**ROOM EQUIPMENT MASTERY**  
**Digital Radiography Equipment**

Name \_\_\_\_\_ Hospital/Office \_\_\_\_\_

Semester \_\_\_\_\_ XRT \_\_\_\_\_ Class of \_\_\_\_\_ Room \_\_\_\_\_

Must be completed by students and may be reviewed by a supervising technologist.

**EQUIPMENT**

Type:

kV range:

Main Switch Location:

Focal Spots:

mA Range:

Filtration: Inherent \_\_\_\_\_ Added \_\_\_\_\_

<b>MANIPULATE THE UNIT</b>	<b>Yes</b>	<b>No</b>	<b>N/A</b>
Rotate array			
Portrait			
Landscape			
Position array			
Horizontal			
Vertical			
Under table			
Log on system and enter password			
Enter patient data			
Using barcode reader			
Using patients MRN#/last name			
Using new patient screen			
Select active output device			
Confirm active exam tab is correct			
Set correct technique			

<b>IMAGE MANIPULATION</b>	<b>Yes</b>	<b>No</b>	<b>N/A</b>
Adjust contrast			
Crop image			
Add markers			
Add comments			
Rotate/mirror image			
Accept image			
Add view			
Add study			
Close study			
Repreview			
Resend			
Reprint			
Log off system			

**PROVIDE A SUGGESTED TECHNIQUE ON AN AVERAGE PATIENT FOR EACH OF THE FOLLOWING:**

NON-GRID EXTREMITY      kV \_\_\_\_\_ mAs \_\_\_\_\_ SID \_\_\_\_\_

GRID EXTREMITY          kV \_\_\_\_\_ mAs \_\_\_\_\_ SID \_\_\_\_\_

72" NON-AEC CHEST kV \_\_\_\_\_ mAs \_\_\_\_\_ SID \_\_\_\_\_

**ROOM EQUIPMENT MASTERY**  
**Computer Radiography Equipment**

Name \_\_\_\_\_ Hospital/Office \_\_\_\_\_

Semester \_\_\_\_\_ XRT \_\_\_\_\_ Class of \_\_\_\_\_ Room \_\_\_\_\_

Must be completed by students and may be reviewed by a supervising technologist.

**EQUIPMENT**

Type:

kV range:

Main Switch Location:

Focal Spots:

mA Range:

Filtration: Inherent \_\_\_\_\_ Added \_\_\_\_\_

<b>MANIPULATE THE UNIT</b>	<b>Yes</b>	<b>No</b>	<b>N/A</b>
Rotate array			
Portrait			
Landscape			
Position array			
Horizontal			
Vertical			
Under table			
Enter patient data			
Using barcode reader			
Using patients MRN#/last name			
Using new patient screen			
Confirm active exam tab is correct			
Set correct technique			

<b>IMAGE MANIPULATION</b>	<b>Yes</b>	<b>No</b>	<b>N/A</b>
Adjust contrast			
Add markers			
Rotate/mirror image			
Accept image			
Add view			
Add study			
Close study			
Resend			
Reprint			
Accept/reject image			

**PROVIDE A SUGGESTED TECHNIQUE ON AN AVERAGE PATIENT FOR EACH OF THE FOLLOWING:**

NON-GRID EXTREMITY      kV \_\_\_\_\_ mAs \_\_\_\_\_ SID \_\_\_\_\_

GRID EXTREMITY          kV \_\_\_\_\_ mAs \_\_\_\_\_ SID \_\_\_\_\_

72" NON-AEC CHEST kV \_\_\_\_\_ mAs \_\_\_\_\_ SID \_\_\_\_\_

**Monroe Community College  
Radiologic Technology Program  
Competency/Film Critique Master Checklist**

Student Name:

Class of:

Category – Mandatory	Competency (evaluator, date, comments)	Grade	Terminal Competency (evaluator, date, comments)	Grade
<b>1. Distal Upper Extremity</b>				
1. Finger/thumb			1.	
2. hand				
3. Wrist				
<b>2. Mid Upper Extremity</b>				
4. Forearm			2.	
5. Elbow				
<b>3. Proximal Upper Extremity</b>				
6. Humerus			3.	
7. Shoulder (non-trauma)				
<b>4. Distal Lower Extremity</b>				
8. Foot			4.	
9. Ankle				
<b>5. Mid Lower Extremity</b>				
10. Tibia-fibula			5.	
11. Knee				
<b>6. Proximal Lower Extremity/Pelvic Girdle</b>				
12. Femur			6.	
13. Hip (routine)				
14. Pelvis				
<b>7. Spine</b>				
15. Lumbosacral spine			7.	
16. Thoracic Spine				
17. Cervical spine (routine)				
<b>8. Head</b>				
18. Skull			8.	
19. Paranasal sinuses				
<b>9. Thorax - Chest</b>				
20. Chest (routine)			9.	
21. Chest, AP (stretcher, wheelchair)				
<b>10. Thorax - Ribs</b>				
22. Ribs			10.	
<b>11. Abdomen</b>				
23. Abdomen supine (KUB)			11.	
24. Abdomen (upright or decubitis)				
<b>12. Gastrointestinal Studies</b>				
25. UGI (single or double contrast)			12.	
26. BE (single or double contrast)				
<b>13. Surgical Studies</b>				
27. C-arm procedure			13.	
<b>14. Mobile Studies</b>				
28. Chest			14.	
29. Abdomen				
30. Orthopedic				
<b>15. Trauma Studies</b>				
31. Upper extremity			15.	
32. Shoulder (axillary or Y shot)				
33. Lower extremity				
34. Hip (includes cross table)				
35. Cervical spine (with cross table)				
<b>16. Pediatrics</b>				
36. Chest (routine)			16.	

Category – Electives (15 Required)	Competency (evaluator, date, comments)	Grade
<b>1. Upper Extremity</b>		
1. AC Joints		
2. Clavicle		
3. Scapula		
<b>2. Lower Extremity</b>		
4. Toe		
5. Os calcis		
6. Patella		
<b>3. Spine</b>		
7. Sacrum and or Coccyx		
8. Scoliosis series		
9. Sacroiliac joints		
<b>4. Head</b>		
10. Facial bones		
11. Orbits		
12. Zygomatic arches		
13. Nasal bones		
14. Mandible (Panorex acceptable)		
<b>5. Thorax</b>		
15. Decubitus chest		
16. Sternum		
17. Airway (soft tissue neck)		
<b>6. Gastrointestinal/Fluoroscopy</b>		
18. Small bowel series		
19. Esophagus		
20. IVP/Cystography/VCUG		
21. ERCP		
22. Myelography		
23. Arthrography		
<b>7. Surgical Studies</b>		
24. Surgical cholangiography		
25. Retrograde pyelography		
<b>8. Pediatric ≤ 6 years old</b>		
26. Upper extremity		
27. Lower extremity		
28. Abdomen		
29. Mobile study		

Film Critique Assessment	Date/Initials	Film Critique Assessment	Date/Initials
Non-bucky extremity		Gastrointestinal Series	
Bucky extremity		Cervical Spine	
Abdomen Series		Lumbar Spine	
Thorax		Skull, Sinus, Facial	
Hip, Pelvis, Sacrum		Trauma Study	
Patient Care	Date/initials	Patient Care	Date/initials
CPR		Sterile technique	
Vital Signs		Venipuncture	
		Care of medical equipment	
Critical Thinking Competency	Exam 1	Exam 2	
*Inserting date with initials signifies that the student has satisfactorily completed the task. The examiner must personally place their initials after the date. All clinical requirements must be successfully completed by the end of XRT 252, otherwise the student must successfully complete XRT 253 in order to graduate.			

**Monroe Community College  
Radiologic Technology Program  
Clinical Competency Evaluation Form**

1

**Student Name** \_\_\_\_\_ **Class of** \_\_\_\_\_ **Mandatory: Finger/Thumb, Hand, Wrist**

**Instructions:** Fill out this form assigning numerical values of 0 - 2 points in each category (A - O) according to stated criteria; C # columns are for Competencies, CMP column is for the Terminal Competency exam. Individual Competency tests must be passed before the Terminal Competency exam is attempted. Determine grades by adding points and using key on reverse side. Place date, patient ID, exam, examiner signature and have student initial in appropriate box. **A zero in any category is an automatic failure, but the entire form must be filled out for each Competency exam.**

<b>PERFORMANCE CRITERIA</b>	<b>C1</b>	<b>C2</b>	<b>C3</b>	<b>C4</b>	<b>C5</b>	<b>C6</b>	<b>CMP</b>
<b>A. Reads and Interprets Requisition</b> - prior to calling patient. 2.) Correctly interprets terminology, projections needed, & procedure protocol 1.) Limited understanding of terminology, projections, procedure protocol 0.) Misinterprets terminology, projections needed, procedure protocol							
<b>B. Patient Relationship</b> - Applies communication skills. Explanation, history and identification verifications are demonstrated. 2.) Introduces self, verifies, explains procedure, takes history (?pregnancy) 1.) Communicates with patient, leaves some detail out 0.) Does not introduce self, verify, explain, or talk to patient acceptably							
<b>C. Room/Equipment Setup and Use</b> - Properly sets up room and control panel for procedure. Room reasonably prepared before patient enters. 2.) Prepares table, chairs, equipment & films, sets control panel 1.) Improperly sets up room / control panel- catches & corrects mistake 0.) Has to be corrected just before exposure							
<b>D. Film Size/Type/Direction</b> -Used according to department protocol. 2.) Uses correct film size & type, used in the proper alignment 1.) Uses incorrect film size or type but is logical in choice & alignment 0.) Uses incorrect film size or type, film used in the wrong alignment							
<b>E. Patient Position</b> - Applies class lecture information and department protocol. 2.) Patient placed in correct position for study 1.) Minor corrections made ( e.g. oblique not quite 45) 0.) Patient placed in completely wrong position for study							
<b>F. Central Ray/Landmarks</b> - Applies class lecture and department protocols. 2.) Correct central ray and landmark use 1.) Acceptable central ray and landmark use, part is sufficiently within field 0.) Correct central ray and/or landmarks are not used							
<b>G. Tube/Film/Part Alignment</b> - Applies class lecture and department protocols. 2.) All alignment is correct 1.) Alignment slightly off but acceptable 0.) Alignment inappropriate - part is or would be cut off							
<b>H. Immobilization (as needed)</b> - Applies class lecture with patient safety in mind. 2.) Immobilization techniques correctly and creatively applied 1.) Immobilization techniques adequate for procedure 0.) Immobilization is not used or is ineffectively used							
<b>I. Markers, I.D.</b> - Used according to lecture, legal guidelines & department protocols. 2.) Uses markers and patient I.D. correctly, seen on radiograph 1.) Uses markers & I.D., not seen on radiograph/not used properly 0.) Does not have/use markers, and/or does not use I.D. (Flash)							

<b>J. Technique</b> - Applies technique based on department protocols & technique charts. 2.) Consults technique chart and correctly sets technical factors 1.) Consults technique chart, makes small error film not affected, 0.) Does not consult technique chart/ uses incorrect technical factors					C1	C2	C3	C4	C5	C6	CMP
<b>K. Collimation</b> - Applies class instruction and department protocol. 2.) Uses proper collimation (collimation to film or better, part not cut) 1.) Collimates, but should be better for this exam 0.) Does not collimate or collimates but cuts off part											
<b>L. Shielding</b> - Applies classroom information and/or <u>department protocol</u> . 2.) Shields patient properly 1.) Shields patient, more area could be covered 0.) Does not shield, covers part, or does not shield patient properly											
<b>M. Patient Safety</b> - Applies class lecture & department protocols for safe practices, is aware of patient needs and responds appropriately. 2.) Applies safe practices and responds appropriately to patient needs 1.) Acceptably safe practices, good response, unsure of some patient needs 0.) Unacceptable safety measures, and/or unaware of patient needs, and/or inappropriate response to patient needs											
<b>N. Work Pattern</b> - Applies logical steps in preparing for & performing procedure in a timely manner. 2.) All steps follow a logical sequence in a timely manner 1.) Some steps cause wasted time 0.) No logical order to steps, seems confused, disorganized, excessive time											
<b>O. Image Evaluation</b> - Films are properly evaluated for quality & completeness. 2.) Identifies all anatomy and positions, properly judges quality 1.) Identifies most anatomy and positions, fairly good judgment of quality 0.) Unable to identify anatomy or positions, poor judgment of quality											
<b>Points Earned / Fail</b>											
	P/F	Grade	Date	MRN	Exam	Examiner's Signature			Student Initials		
C1											
C2											
C3											
C4											
C5											
C6											
CMP											

**Comments:**

C1  
.  
C2  
.  
C3  
.  
.  
Comp

**KEY:**

**Competency:**

30 = 100 (pointsx100)÷30=grade  
 29 = 97  
 28 = 93  
 27 = 90  
 26 = 87 Sophomore fail, Freshman pass  
 25 = 83 Freshman pass  
 below 25 Freshman fail  
**A zero in any (A - O) = Fail Competency**

**REMEDIAL CRITERIA FOR CLINICAL COMPETENCY RE-TESTING**

**OVERVIEW**

Students are required to satisfactorily complete competency testing at or above the minimum level of expected performance as stated on Clinical Competency Evaluation Form for clinical education courses. If a student attains a grade below the minimal expected performance level, the below criteria for remedial work must be completed before the student is re-tested.

- 1.0 Re-study radiographic positioning/procedure from textbook and notes.
- 2.0 Review clinical education center's policies and procedures.
- 3.0 Begin the mastery learning cycle again: observing a licensed radiographer/ clinical faculty and perform procedure under direct supervision. If a terminal competency test was failed, then the student must again perform a competency test on each procedure within the category of the terminal competency, followed by a second terminal competency. The terminal competency test may be on any procedure within the competency category at the discretion of the evaluator.
- 4.0 Request conference with clinical faculty to review procedure requirements prior to competency testing.

\* \* \* \* \*

I have completed 1.0 to 4.0 and I am ready to re-test.

yes                      no

\_\_\_\_\_   
 Student Signature

Is student ready for re-testing?

yes                      no

\_\_\_\_\_   
 Clinical Faculty Signature

\_\_\_\_\_   
 Date

Records for student portfolio:

- \* 1st clinical competency evaluation form
- \* this remedial form
- \* 2nd clinical competency evaluation form

ED/bl

152:Bklt1

9/87, 9/93, 10/96, 12/00, 10/04

**MONROE COMMUNITY COLLEGE**  
**Radiologic Technology Program**  
**Clinical Education**  
**FILM CRITIQUE ASSESSMENT**

This form is designed to guide the student toward proper film critique presentations. Each student must be evaluated during film critique sessions at least twice every semester.

<b>The student is able to:</b>	<b>Excellent (2)</b>	<b>Fair (1)</b>	<b>Poor (0)</b>
1.0 Evaluate the radiographic request and correlate clinical information with the radiographic exam.			
2.0 Place each radiograph on the illuminator oriented correctly.			
3.0 Identify all radiographic projections.			
4.0 Explain anatomical structures demonstrated in each projection.			
5.0 Identify landmarks, tube-part-film alignment, central ray and other positioning techniques.			
6.0 Discuss exposure factors as related to diagnostic acceptability.			
7.0 Identify proper identification.			
8.0 Evaluate radiation protection measures used including beam limiting and shielding.			
9.0 Describe suggestions for any radiographic examination improvements.			
10.0 Present information in an innovative manner which challenges fellow students.			

GRADE \_\_\_\_\_

Comments: \_\_\_\_\_  
 \_\_\_\_\_  
 \_\_\_\_\_  
 \_\_\_\_\_

Name: \_\_\_\_\_ Date: \_\_\_\_\_

Examination: \_\_\_\_\_ Class of: \_\_\_\_\_

\_\_\_\_\_  
 Evaluator

\_\_\_\_\_  
 Signature of Student

**MONROE COMMUNITY COLLEGE  
RADIOLOGIC TECHNOLOGY PROGRAM  
CLINICAL EDUCATION  
ASSESSMENT OF PROFESSIONAL GROWTH - PROGRESS FORM**

To be used with assessment of professional growth, this progress form provides faculty with a means for evaluating individual student progress in the clinical setting. This is not a skills assessment, but rather an appraisal of the student's progress toward the goal of an independent professional with meaningful employment characteristics.

STUDENT NAME: \_\_\_\_\_ Class of \_\_\_\_\_

DATE:	XRT 151	XRT 152	XRT 153	XRT 251	XRT 252	XRT 253
AFFILIATE:						
EVALUATOR:						
A. Organization						
B. Quality of work						
C. Time Management						
D. Communication						
E. Interpersonal Relationships						
F. Motivation						
G. Situational Assessment						
H. Professional Ethics						
I. Self -confidence						
J. Retention of Knowledge						
Grade Total						
Anecdotal <i>yes/no</i>						
Student Initials						

(Written Summaries on back of this form) 12/00, 12/03

XRT 111

XRT 122

XRT 153

XRT 251

XRT 252

XRT 253

**MONROE COMMUNITY COLLEGE**  
**Radiologic Technology Program**

**Clinical Education**  
**Assessment of Professional Growth**

**OVERVIEW**

The goal of the Clinical Educational Experience is to graduate professional individuals who conform to professional standards of conduct and have desirable employment characteristics. The function of this assessment is to provide the faculty a means of evaluating each student as he/she progresses toward the goal of an independent professional. Each section is weighted with a value of 0-3 as indicated:

Circle the value to indicate level of performance.

- A. **Organization:** Exhibits logic in work patterns  
3 Consistently demonstrates organizational skills  
2 Usually organized, adapts well.  
1 Attempts to be organized, understands need for improvement.  
0 Demonstrates weakness in organizational skills.
- B. **Quality of Work:** Thorough, neat, accurate, organized  
3 Meets highest standards of accuracy and thoroughness  
2 Work is consistently well done  
1 Recognizes need for improvement and attempts to correct  
0 Needs improvement, but does not recognize need for improvement.
- C. **Time Management:** Constructive and productive use of time  
3 Consistently efficient, highly productive  
2 Productive, completes tasks in timely manner  
1 Slow to initiate and complete work  
0 Has difficulty using time efficiently
- D. **Communication:** Ability to interact with patients  
3 Superior ability to establish rapport with patients  
2 Aware of patient needs, usually interacts well  
1 Responds to direct requests only, needs improvement  
0 Avoids communication
- E. **Interpersonal Relationships:** Communication/interaction with hospital staff and peers  
3 Tactful, promotes good will, pleasant  
2 Gets along well with others  
1 Could be more considerate and tactful  
0 Lack of/poor interaction with others
- F. **Motivation:** Willingness to work  
3 Seeks additional work and independent responsibilities  
2 Self motivated, seeks assignments  
1 Usually follows through when assigned tasks  
0 Avoids work
- G. **Situational Assessment:** Reasoning and interpretation skills  
3 Takes control of situation, responds well under pressure  
2 Uses sound reasoning in making decisions and reaching conclusions  
1 Has limited ability to assess a given situation  
0 Somewhat illogical, frequent inaccurate or poor decisions

- H. **Professional Ethics: Patient rights, integrity, honesty, character, reaction to criticism**  
3 Demonstrates impeccable professional integrity, always on time, never absent, always in assigned area  
2 Adheres to professional standards in acceptable manner, usually on time, usually in assigned area  
1 Attempts professional conduct, usually succeeding, sometimes tardy or absent  
0 Ignores rights of others, displays negative attitude, frequently tardy or absent
- I. **Self-confidence: Trust in ones abilities**  
3 Consistently self-confident, applies independent judgment  
2 Self-confident within reason  
1 Sometimes unsure or unable to move forward when indicated  
0 Easily upset and unsure
- J. **Retention of Knowledge**  
3 Consistently interprets and applies learned information  
2 Retains information well  
1 Requires some repetition of information  
0 Requires repeated explanations

Total Value: \_\_\_\_\_ Points toward Clinical Grade: \_\_\_\_\_

Value of 20 and above: indicates meets expectations ..... 15 points

Value of 10-19: indicates improvement required ..... 7.5 points

Value of less than 10: indicates major improvement required ..... 3.75 points

The points applied to the clinical grade on the midterm and final clinical grade worksheet are indicated on the scale to the right, above. Fifteen clinical grade points indicates an expected level of performance.

Evaluator: \_\_\_\_\_ Date: \_\_\_\_\_  
 Signature

Student Name: \_\_\_\_\_ Semester: \_\_\_\_\_  
 Signature

Comments:  
 \_\_\_\_\_  
 \_\_\_\_\_  
 \_\_\_\_\_  
 \_\_\_\_\_

152:CE9  
 11/92, 3/93, 5/93, 9/93, 1/97, 3/97, 10/02, 5/03, 5/19/03

**MONROE COMMUNITY COLLEGE**  
**STUDENT COUNSELING REPORT**  
**Radiologic Technology Program Anecdotal Report**

The following counseling report was issued today and is to be made part of the following student's file.

Student Name \_\_\_\_\_ Date \_\_\_\_\_

Clinical Site \_\_\_\_\_ Semester \_\_\_\_\_ Class \_\_\_\_\_

Category I		Category II		Category III	
1.	<input type="checkbox"/> Narcotic and/or other drug infraction	1.	<input type="checkbox"/> Unprofessional/disorderly behavior	1.	<input type="checkbox"/> Helped patient
2.	<input type="checkbox"/> Misuse/theft of hospital property	2.	<input type="checkbox"/> Leaving assigned clinical area	2.	<input type="checkbox"/> Complimented by physician/staff
3.	<input type="checkbox"/> Disclosure of confidential information	3.	<input type="checkbox"/> Failure to be alert	3.	<input type="checkbox"/> Other Category
4.	<input type="checkbox"/> Falsification of clinical documents	4.	<input type="checkbox"/> Hindering clinical flow	Category I	<input type="checkbox"/> Dismissal from site/program according to College policy
5.	<input type="checkbox"/> Unprofessional/unethical conduct	5.	<input type="checkbox"/> Insubordination	Category II	<input type="checkbox"/> 1st Offense – Counseling
6.	<input type="checkbox"/> Possession of weapons	6.	<input type="checkbox"/> Excessive absences/tardiness		<input type="checkbox"/> 2nd Offense – Three Point deduction from final grade
7.	<input type="checkbox"/> Assault, abuse of negligence with respect to any person	7.	<input type="checkbox"/> Violation of safety rules/regulations		<input type="checkbox"/> 3rd Offense Dismissal from site
8.	<input type="checkbox"/> Tampering with official documents	8.	<input type="checkbox"/> Failure to comply with supervision policy	Category III	<input type="checkbox"/> Positive Event – point addition to final grade
9.	<input type="checkbox"/> Cheating	9.	<input type="checkbox"/> Unauthorized use of hospital equipment, supplies		
10.	<input type="checkbox"/> Non-compliance with code of conduct	10.	<input type="checkbox"/> Radiation protection policy infraction		
11.	<input type="checkbox"/> Second failure of competency exam in the same exam category	11.	<input type="checkbox"/> Poor quality patient care and/or comfort		
12.	<input type="checkbox"/> Fifth counseling report for any discipline action	12.	<input type="checkbox"/> Insufficient exam supervision		
		13.	<input type="checkbox"/> Inappropriate personal appearance		
		14.	<input type="checkbox"/> Loss or regression of clinical skills		
		15.	<input type="checkbox"/> Inability to apply positioning and/or imaging principles		

Description of occurrence (continue on back if necessary)

---



---



---



---

Resolution (if required) (continue on back if necessary)

---



---



---



---

\*Student Signature: \_\_\_\_\_ Date: \_\_\_\_\_

Faculty/Coordinator Signature: \_\_\_\_\_ Date: \_\_\_\_\_

- Signature does not necessarily indicate agreement but indicates that the student has reviewed this record.

**Monroe Community College  
Radiologic Technology Program**

**Evening Rotation  
Policy #30**

**Purpose** - The evening shift rotation will be offered to students in the second semester of their sophomore year. ***This shift will be voluntary.*** The purpose of the evening shift rotation is to allow students to have access to cases that are not typically encountered during a day shift, such as skull and facial work.

**Objective** - After working an evening shift rotation the student will be more proficient in emergency and trauma studies.

**Days/Hours** - The evening shift will be **2:00 PM - 9:00 PM** with a one hour lunch break. The shift may be worked on Monday and Wednesday so as not to conflict with college class schedules.

**Hospitals** - Students may elect to work an evening rotation at Strong Memorial Hospital or Rochester General Hospital.

**Supervision**

- The students must work with direct supervision until competency in an area has been achieved. Direct supervision is described as a registered technologist being in the room with the student.
- The student may work with indirect supervision once competency has been achieved. Indirect supervision is described as a registered technologist being immediately available.
- Regardless of the level of competency, any repeats must be performed under the direct supervision of a registered technologist.
- Students are not to be used to replace staff technologists.
- Regardless of competency level, all studies performed by a student must be approved by a registered technologist before the patient is released from the department. The technologist must initial the patient requisition.

**Parameters**

- Students who volunteer to work an evening shift must select their week at the beginning of the semester. They may not work on days when the college is not in session (e.g. holidays, winter or spring breaks).
- If a student wishes to work a second week of an evening rotation they must receive approval from one of the **Clinical Coordinators** prior to the start of the semester.
- On a week where a student attends clinic on Monday and Wednesday evenings ***they must attend clinic on Friday as usual.***

**Rules and Guidelines** - All college and hospital rules, dress codes, regulations and competency requirements that apply to regular daytime clinical experience apply to the evening shifts.

## **Evening Rotation Competencies**

At the completion of the evening shift rotation the student will:

1. Complete mastery and competency requirements in common "off shift" studies such as trauma skulls, facial bones, spines, abdomens, chest and operating room procedures.
2. Utilize modified positioning techniques as warranted.
3. Gain confidence working in a busy, urban setting.
4. Increase their ability to properly evaluate film quality.
5. Develop an understanding of the nature of independent decision making and judgement.
6. Gain proficiency on procedures in which they have been deemed competent.
7. Through closer interactions with resident and emergency room staff become familiar with triage, trauma evaluation, and emergency room technique

P030

PAP 11/00

Rev. 6/01