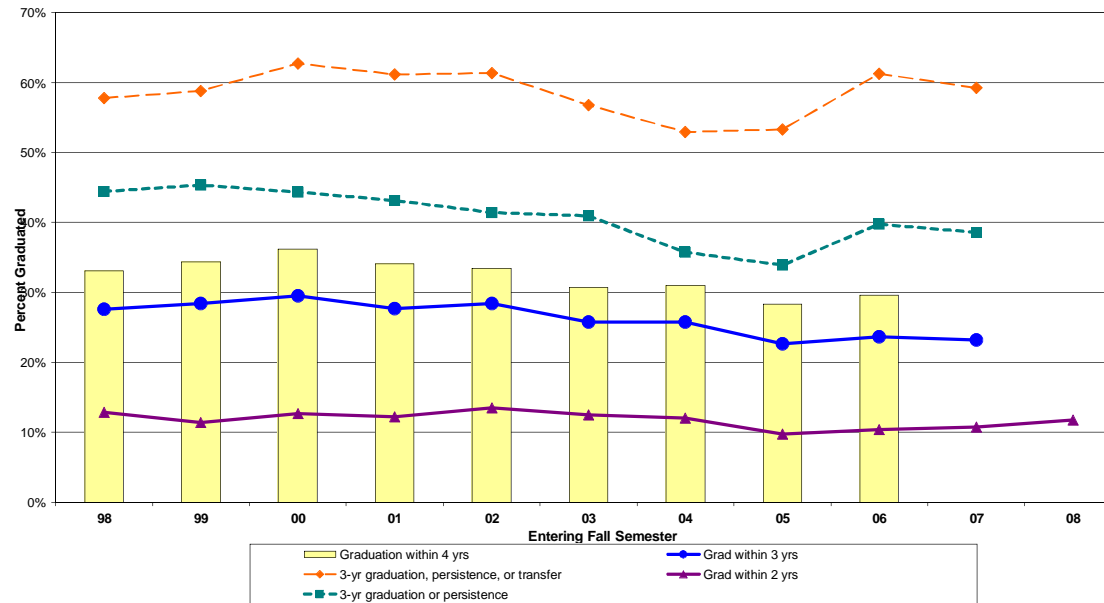


# GRADUATION RATES OF FIRST-TIME FULL-TIME COHORTS

## STUDENTS IN ASSOCIATE DEGREE PROGRAMS



<u>Entering Fall Semester</u>	<u>1998</u>	<u>1999</u>	<u>2000</u>	<u>2001</u>	<u>2002</u>	<u>2003</u>	<u>2004</u>	<u>2005</u>	<u>2006</u>	<u>2007</u>	<u>2008</u>
Number in Cohort	2,009	2,081	2,329	2,499	2,733	3,066	3,513	3,281	3,400	3,691	3,899
Graduation Rate <sup>1</sup>											
Within 2 Years	12.9%	11.4%	12.7%	12.2%	13.5%	12.5%	12.0%	9.8%	10.4%	10.7%	11.8%
Within 3 Years	27.6%	28.4%	29.5%	27.7%	28.4%	25.8%	25.8%	22.7%	23.6%	23.2%	
Within 4 Years	33.1%	34.4%	36.2%	34.1%	33.5%	30.7%	30.9%	28.3%	29.6%		
Graduation or Persistence After 3 Years											
MCC	44.4%	45.4%	44.3%	43.1%	41.4%	41.0%	35.7%	34.0%	39.8%	38.6%	
SUNY Comm. Colls.	40.0%	41.3%	46.2%	44.7%	37.0%	38.6%	37.9%	33.4%	29.6%		
Graduation, Persistence, or Transfer After 3 Years											
MCC	57.7%	58.8%	62.7%	61.1%	61.4%	56.8%	52.9%	53.3%	61.2%	59.3%	
SUNY Community Coll	57.2%	59.0%	66.1%	63.3%	52.5%	59.4%	58.3%	55.2%	52.9%		

<sup>1</sup> Graduation rates shown are cumulative percentages.