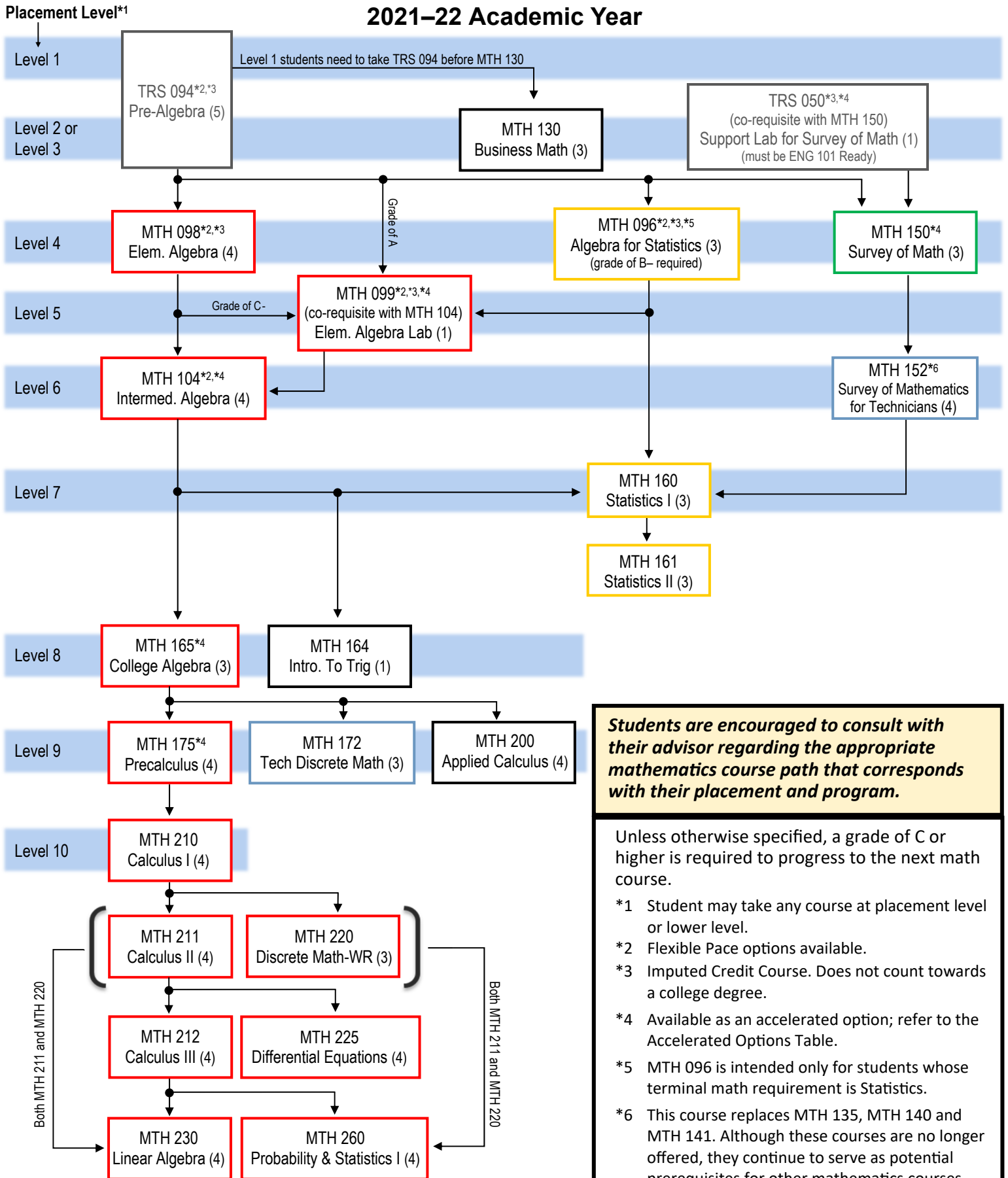


Mathematics Course Paths

School of Applied Sciences & Technologies

2021–22 Academic Year



Students are encouraged to consult with their advisor regarding the appropriate mathematics course path that corresponds with their placement and program.

Unless otherwise specified, a grade of C or higher is required to progress to the next math course.

- *1 Student may take any course at placement level or lower level.
- *2 Flexible Pace options available.
- *3 Imputed Credit Course. Does not count towards a college degree.
- *4 Available as an accelerated option; refer to the Accelerated Options Table.
- *5 MTH 096 is intended only for students whose terminal math requirement is Statistics.
- *6 This course replaces MTH 135, MTH 140 and MTH 141. Although these courses are no longer offered, they continue to serve as potential prerequisites for other mathematics courses (see the course descriptions on MCC's website.)

Math Requirements for Programs in the School of Applied Sciences & Technologies: 2021-22 Academic Year

Code	Degree	Program	Math Requirements in Program	Math Requirement for Program Entrance
ASC1	Cert	Advanced Studies	None	550 Math or Verbal SAT
HV01	AAS	Air Cond. Tech.: Heating/Ventilation	*135/up (MCC-QL) (not 150/156)	Elementary Algebra with Geometry (or MTH 098 at MCC)
AI01	AAS	Applied Integrated Technology	(*140,*141)/(160,164,165/up)	Intermediate Algebra with Trigonometry (or MTH 104 at MCC)
AT01	AAS	Apprentice Training – Automotive and GMASEP	*135/104/(164,165)/175/up	Elementary Algebra with Geometry (or MTH 098 currently registered in or higher). 2 years of high school Regents algebra are recommended.
AT10	AAS	Apprentice - Auto. Toyota T-TEN	150 or other SUNY-M course if approved by program chair	MCC Level 4 Mathematics placement
AT12	Cert	Apprentice - Auto. Toyota T-TEN	*135	MCC Level 4 Mathematics placement
AT13	AAS	Automotive - Multi-Manufacturer	150 or other SUNY-M course if approved by program chair	Elementary Algebra with Geometry (or MTH 098 currently registered in or higher).
AT02	Cert	Automotive Technology	*135/104/(164,165)/175/up	Elementary Algebra with Geometry (or MTH 098 currently registered in or higher). 2 years of high school Regents algebra are recommended.
MT02	Cert	Computer Aided Design/Drafting	104	Elementary Algebra with Geometry (or MTH 098 at MCC)
CS01	AS	Computer Science	210,211,220, (230/ENG 251)	Pre-Calculus in high school with 83 or better, MTH 175 with a C or better or MCC Level 10 Math Placement.
CP01	AAS	Computer Systems Technology	165/up (MCC-QL), 2 of: 160/172/175/210/211/220	Intermediate Algebra with Trigonometry (or MTH 104 at MCC)
CT01	AAS	Construction Technology	*140/(164,165)/175/210/211/212/225 (+NS&M)	Intermediate Algebra with Trigonometry (or MTH 104 at MCC)
HM09	Cert	Culinary Arts	None	Algebra (1 year high school math or placement into Level 4 Math at MCC)
ET01	AAS	Elect. Eng. Tech. - Electronics	(*140,*141,175)/(165,175,210)	Intermediate Algebra with Trigonometry (or MTH 104 at MCC)
ETX1	Cert	Electronics Technology	*140/(164,165)/175/210/up	Intermediate Algebra with Trigonometry (or MTH 104 at MCC)
EM02	Cert	Emergency Medical Services	150/up	Elementary Algebra with Geometry (or MTH 098 at MCC)
FR01	AAS	Fire Protection Technology	*135/*140/150/160/up (MCC-QL)	Algebra (1 year high school math or placement into Level 4 Math at MCC)
FR03	AS	Fire Protection Technology	150/160/up (SUNY-M)	Students should be ready to enter MTH 150
HM08	Cert	Food Management	None	Pre-Algebra (1 year high school math or placement into Level 3 Math at MCC)
HV02	Cert	Heating, Ventilating, A/C	104/*135/*140/*141/165/175/up	Elementary Algebra with Geometry (or MTH 098 at MCC)
EM06	AS	Homeland Security	150/up (SUNY-M)	TRS 094 with a grade of C or better, or MCC Level 4 Mathematics Placement
EM04	Cert	Homeland Security	None	Placement at MCC Math Level 4 or above
HM01	AAS	Hospitality Management	130/160/165/up (MCC-QL)	Algebra (1 year high school math) or TRS 092 with a grade of C or better, or MCC Level 2 Mathematics Placement.
HM10	Cert	Hotel Management	None	Placement into TRS 094 or MTH 130 or higher
IT01	AS	Information Technology	160,172,(200/SPC 142/ENG LIT)	Intermediate Algebra with Trigonometry (or MTH 104 at MCC)
IN01	AAS	Information & Network Technology	*140/165/up (MCC-QL)	MTH 104 (or equivalent) with a grade of C or better or MCC Level 8 Mathematics Placement.
LE02	Cert	Law Enforcement	None	None
LA04	AS	Lib. Arts & Sci. - Gen. Studies	150/up (SUNY-M)	Algebra (1 year high school math or placement into Level 4 Math at MCC)
LA10	AS	Lib. Arts & Sci. - Gen. Studies - Nutrition	160, 165/up	Intermediate Algebra with Trigonometry (or MTH 104 at MCC)
MT01	AAS	Mechanical Technology	(*140/165/up MCC-QL), (*141/175/ up/ENG 251/Prog. Elec.)	Intermediate Algebra with Trigonometry (or MTH 104 at MCC)
AI02	Cert	Mechatronics	*140	None
OF02	AAS	Office Technology: Office Administrative Assistant	130	Algebra (1 year high school math or placement into Level 3 Math at MCC)
OF06	Cert	Office Technology: Medical Office Assistant	None	None
OT01	AAS	Optical Systems Technology	(*140,*141,175)/(165,175,210/up)	Intermediate Algebra with Trigonometry (or MTH 104 at MCC)
OT02	Cert	Optical Systems Technology	*140/up (not 150/155/156)	Intermediate Algebra with Trigonometry (or MTH 104 at MCC)
EM01	AAS	Paramedic	150/up	Elementary Algebra with Geometry (or MTH 098 at MCC)
EM05	Cert	Paramedic Certificate	None	None
PM01	AAS	Precision Machining	None	Elementary Algebra with Geometry (or MTH 098 at MCC). (It is recommended that students have a minimum of 2 years of high school math or place at MTH 104 or higher prior to enrolling in this program.)
PM02	Cert	Precision Machining	None	Elementary Algebra with Geometry (or MTH 098 at MCC). (It is recommended that students have a minimum of 2 years of high school math or place at MTH 104 or higher prior to enrolling in this program.)
PM04	Cert	Prec. Mach.- Optical Fabrication	None	Algebra (1 year high school math or placement into Level 4 Math at MCC)
PS01	AAS	Public Safety Communications	*135/*140/150/160/up (MCC-QL)	Recommend high school course in math
ST02	Cert	Solar Thermal Technology	*135	Elementary Algebra with Geometry (or MTH 098 at MCC)
HM11	Cert	Travel and Tourism	None	Pre-Algebra (1 year high school math or placement into Level 3 (TRS 094 or MTH 130) or higher)

Key: NS&M means any 3-4 credit natural sciences or mathematics elective. A comma means "and". A slash means "or". So 160,165/up means MTH 160 and MTH 165 (or higher).

SUNY-M means that the course selected must be a SUNY General Education Mathematics course.

MCC-QL means that the course selected must be an MCC General Education Quantitative Literacy course.

*135/140/141 are no longer offered. Students in a program requiring any of those courses should consult with an advisor about selecting appropriate alternative courses.

All information subject to change/correction

See the other side for a flow chart of math courses for this school.

Revised 7/1/21

Mathematics Accelerated Options: 2021-22 Academic Year

The options outlined here allow a student to complete more than one course in a semester.

These are good choices for motivated students with strong study skills.

LINKED COURSES			
	Credits and Hours	Prerequisite	Successful Result
TRS 050 with MTH 150	TRS 050: 1 imputed credit MTH 150: 3 credits 5 hours/wk	ENG 101 ready and Math placement level 2 or 3 or TRS 092 C or better	Credit for TRS 050 and Credit for MTH 150
MTH 099 with MTH 104	MTH 099: 1 imputed credit MTH 104: 4 credits 6 hours/wk	Math placement level 5 or TRS 094 A or MTH 098 C- or MTH 096 B- or better	Credit for MTH 099 (equivalent to MTH 098) and Credit for MTH 104
MTH 104 with MTH 165 (FastTrack)	MTH 104: 4 credits MTH 165: 3 credits 7 hours/wk	Math placement level 6 or MTH 098 C or better (same as entry to MTH 104)	Credit for MTH 104 and Credit for MTH 165
MTH 165 with MTH 175 (FastTrack)	MTH 165: 3 credits MTH 175: 4 credits 7 hours/wk	Math placement level 8 or MTH 104 C or better (same as entry to MTH 165)	Credit for MTH 165 and Credit for MTH 175
<ul style="list-style-type: none"> To register for the linked courses, sign up for both courses, with the same section number. For example: TRS-050-103 and MTH-150-103 or MTH-165-301 and MTH-175-301. Meeting modalities may include remote, remote-reduced, hybrid, face-to-face, or online. Refer to the Master Schedule for class options. 			

FLEXIBLE PACE	
<p>Accelerating with Flexible Pace TRS 094 and MTH 096, 098, 099, 104</p>	<p>TRS 094, MTH 096, MTH 098, MTH 099, & MTH 104 are offered in the Flex format. In a Flex class, a student who completes the class early can start the next flex course. (It is possible to complete two courses in one semester.) If the student does not complete a flex course, the partial course can carry over to the next semester so they do not have to start over from the beginning. A late start MTH 160 or MTH 165 may be available for a student finishing the prerequisite flex course early in the semester.</p> <p>For example, a student might finish MTH 098 early in the semester and do most of MTH 104 in that same semester. In the second semester, the student could finish MTH 104 in time to take a late start MTH 165 course.</p> <p>Another example is that MTH 096 and MTH 098 share 4 modules of content. A student who has taken MTH 098 can take MTH 096 and the test grades for the 4 common modules are imported into MTH 096 (or vice versa).</p>