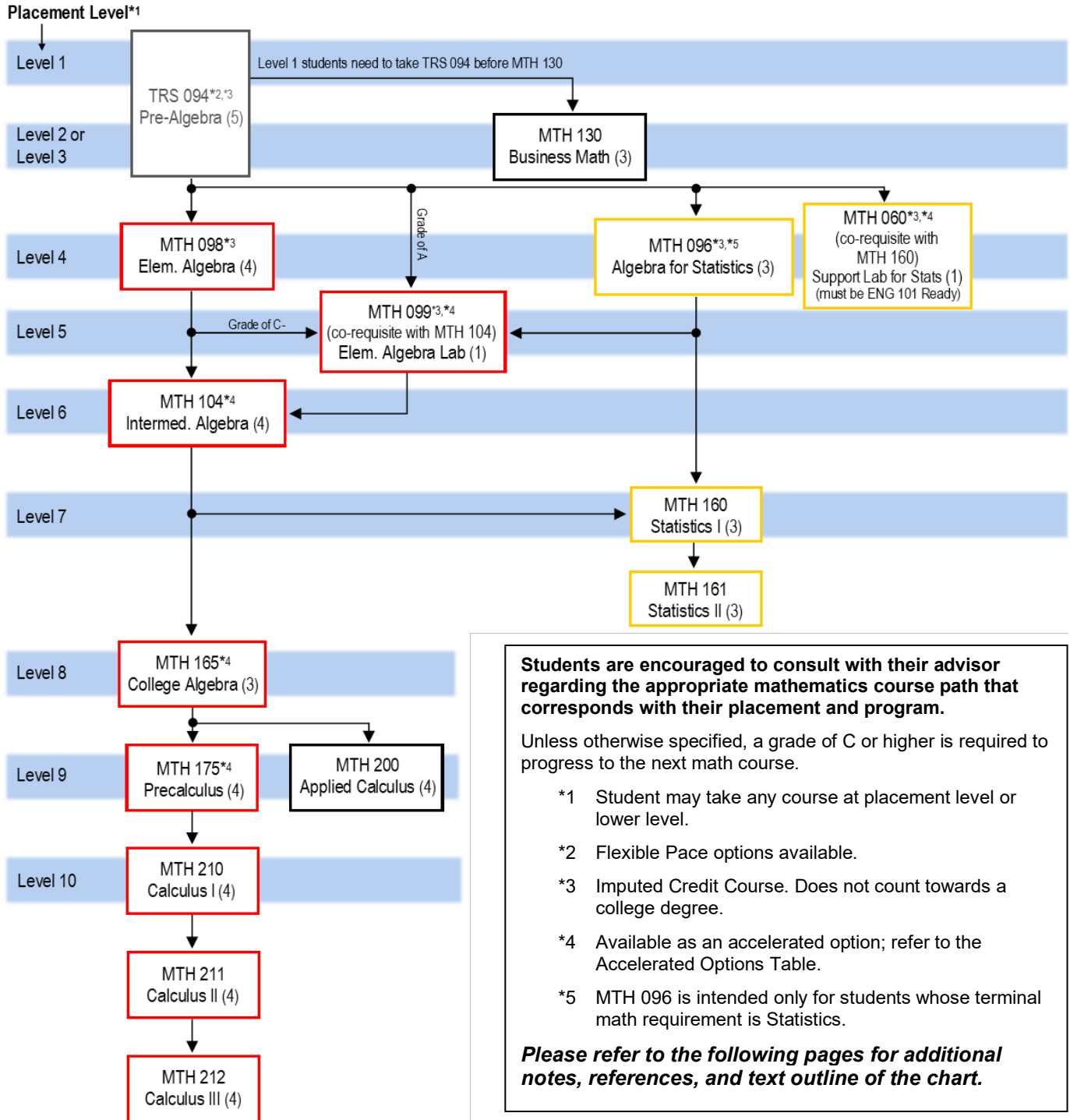




Mathematics Course Paths School of Business & Entrepreneurial Studies 2024–25 Academic Year



Which Math Course Should I Take?

School of Business and Entrepreneurial Studies

Students in this school have different math goals. Each pathway is described below. Students may start at any course at placement level (or lower) and proceed along the pathway until their math goals are met. *(Note: in each pathway, a grade of C or higher is required to move to the next course unless otherwise stated.)*

To qualify to take MTH 130 Business Math, the following path is recommended:

- TRS 094 Pre-Algebra (Placement Levels 1,2 or 3)
- MTH 130 Business Math (Placement Levels 2 or 3)

To qualify to take MTH 160 Statistics I or MTH 161 Statistics II, the following is recommended:

- TRS 094 Pre-Algebra (Placement Levels 1,2 or 3)
- MTH 098 Elementary Algebra (Placement Level 4)
- MTH 104 Intermediate Algebra (Placement Level 6) *(Note: Students who initially place at a Level 5 or students who earn a C- in MTH 098 or students who earn an A in MTH 094 may take MTH 099 as a corequisite with MTH 104.)*
- MTH 160 Statistics I (Placement Level 7)
- MTH 161 Statistics II (Placement Level 7)

Note: As alternative to MTH 098 and MTH 104, students may also qualify for MTH 160 Statistics I via TRS 094 (Placement Level 1) and MTH 096 (Placement Level 4). MTH 096 is intended only for students whose terminal math requirement is Statistics.

To qualify to take MTH 175 Precalculus or MTH 200 Applied Calculus, the following path is recommended:

- TRS 094 Pre-Algebra (Placement Levels 1,2 or 3)
- MTH 098 Elementary Algebra (Placement Level 4)
- MTH 104 Intermediate Algebra (Placement Level 6) *(Note: Students who initially place at a Level 5 or students who earn a C- in MTH 098 or students who earn an A in MTH 094 may take MTH 099 as a corequisite with MTH 104.)*
- MTH 165 College Algebra (Placement Level 8)
- MTH 175 Precalculus or MTH 200 Applied Calculus (Placement Level 9)

Note: Accelerated options exist for courses MTH 104/MTH 165, and MTH 165/MTH 175.

Note: for all Pathways: TRS 094, MTH 060, MTH 098, and MTH 099 are imputed credit courses and do not count towards a college degree.

To qualify to take MTH 210 Calculus 1, or MTH 211 Calculus 2 or MTH 212 Calculus 3 the following path is recommended:

- TRS 094 Pre-Algebra (Placement Levels 1,2 or 3)
- MTH 098 Elementary Algebra (Placement Level 4)
- MTH 104 Intermediate Algebra (Placement Level 6) (*Note: Students who initially place at a Level 5 or students who earn a C- in MTH 098 or students who earn an A in MTH 094 may take MTH 099 as a corequisite with MTH 104.*)
- MTH 165 College Algebra (Placement Level 8)
- MTH 175 Precalculus (Placement Level 9)
- MTH 210 Calculus I (Placement Level 10)
- MTH 211 Calculus II
- MTH 212 Calculus III

Note: Accelerated options exist for courses MTH 104/MTH 165, and MTH 165/MTH 175.

Note for all Pathways: TRS 094, MTH 098, and MTH 099, are imputed credit courses and do not count towards a college degree.

Math Requirements for Programs in the School of Business and Entrepreneurial Studies 2024-2025 Academic Year

Code	Degree	Program	Math Requirements in Program	Math Requirement for Program Entrance
AC01	AAS	Accounting: Technician	150/160/165/up (SUNY-M)	MCC Level 2 mathematics placement
ASC1	Cert	Advanced Studies	None	550 Math or Verbal SAT
BU01	AS	Business Administration	160, (165/175/200/210/211/212), (161/200/210/211/212)	MCC Level 6 mathematics placement
AC03	AS	Business Administration: Accounting	160, (165/175/200/210/211/212), (200/210/211/212)	MTH 104 with a grade of C or higher, or MCC Level 8 Mathematics Placement, or permission of the Business Administration Department Chairperson
BI01	AS	Business: International Business	160, (165/175/200/210/211/212)	Recommended Preparation: Three years of high school mathematics through Intermediate Algebra
CI02	AS	Computer Info. Systems	160, (165/175/200/210/211/212), (161/BUS 220/CIS 201)	MCC Level 6 mathematics placement
EP01	AAS	Entrepreneurial and Applied Business Studies	160	Intermediate Algebra with Trigonometry (or MTH 104 at MCC).
LA04	AS	Liberal Arts & Sciences - General Studies	150/up (SUNY-M) /PHL 102	Algebra (1 year high school math or placement into Level 4 Math at MCC)
BS02	Cert	Small Business Management	130/104/up (not 150) (130 recommended)	One year of high school math, including Business Math, Elementary Algebra with Geometry (or MTH 098 or MTH 130 at MCC)

Key:

- A comma means "and". A slash means "or". So 160,165/up means MTH 160 and MTH 165 (or higher).
- SUNY-M means that the course selected must be a SUNY General Education Mathematics course.

***All information subject to change/correction.
See page 1 for a flow chart of math courses for this school.***

Mathematics Accelerated Options: 2024-25 Academic Year

The options outlined here allow a student to complete more than one course in a semester. These are good choices for motivated students with strong study skills.

Co-requisite Courses

Courses	Credits and Hours	Prerequisite	Successful Result
TRS 050 with MTH 150	TRS 050: 1 imputed credit MTH 150: 3 credits 5 hours/wk	ENG 101 ready and Math placement level 2 or 3 or TRS 092 C or better	Credit for TRS 050 and Credit for MTH 150
MTH 060 with MTH 160	MTH 060: 1 imputed credit MTH 160: 3 credits 5 hours/wk	English 101 ready and math placement level 4 or TRS 094 C or better	Credit for MTH 060 and Credit for MTH 160
MTH 099 with MTH 104	MTH 099: 1 imputed credit MTH 104: 4 credits 6 hours/wk	Math placement level 5 or TRS 094 A or MTH 098 C- or MTH 096 B- or better	Credit for MTH 099 (equivalent to MTH 098) and Credit for MTH 104
MTH 104 with MTH 165 (FastTrack)	MTH 104: 4 credits MTH 165: 3 credits 7 hours/wk	Math placement level 6 or MTH 098 C or better (same as entry to MTH 104)	Credit for MTH 104 and Credit for MTH 165
MTH 165 with MTH 175 (FastTrack)	MTH 165: 3 credits MTH 175: 4 credits 7 hours/wk	Math placement level 8 or MTH 104 C or better (same as entry to MTH 165)	Credit for MTH 165 and Credit for MTH 175

Flexible Pace

Accelerating with Flexible Pace TRS 094

TRS 094 is offered in hybrid, remote/reduced (synchronous) and online (asynchronous) modalities.