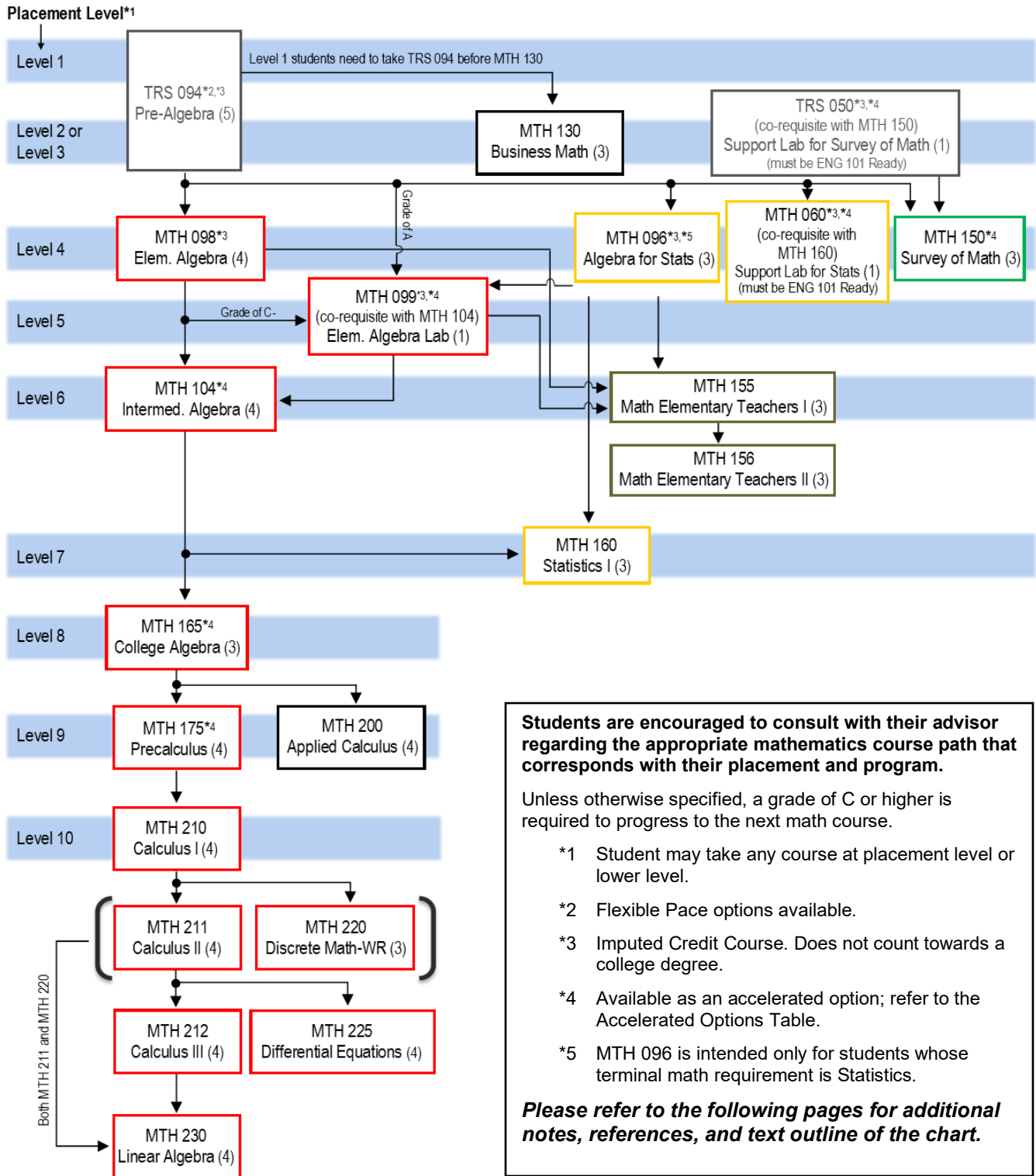




Mathematics Course Paths School of Community Engagement & Development 2024–25 Academic Year



Which Math Course Should I Take?

School of Community Engagement & Development

Students in this school have different math goals. Each pathway is described below. STEM students may start at any course at placement level (or lower) and proceed along the pathway until their math goals are met. *(Note: in each pathway, a grade of C or higher is required to move to the next course unless otherwise stated.)*

To qualify to take MTH 130 Business Math, the following path is recommended:

- TRS 094 Pre-Algebra (Placement Levels 1,2 or 3)
- MTH 130 Business Math (Placement Levels 2 or 3)

To qualify to take MTH 150 Survey of Math, the following path is recommended:

- TRS 094 Pre-Algebra (Placement Levels 1,2 or 3) OR TRS 050 Support Lab for Survey of Math (Placement Levels 2 or 3) as a co-requisite with MTH 150
- MTH 150 Survey of Math

To qualify to take MTH 155 Math Elementary Teachers I or MTH 156 math Elementary Teachers II, the following path is recommended.

- TRS 094 Pre-Algebra (Placement Levels 1,2 or 3)
- MTH 098 Elementary Algebra (Placement Level 4) or MTH 099 Elementary Algebra Lab (Placement Level 5)
- MTH 155 Math Elementary Teachers I (Placement Level 6)
- MTH 156 Math Elementary Teachers II (Placement Level 6)

To qualify to take MTH 160 Statistics I or MTH 161 Statistics II, the following path option is recommended.

- TRS 094 Pre-Algebra (Placement Levels 1,2 or 3)
- MTH 098 Elementary Algebra (Placement Level 4)
- MTH 104 Intermediate Algebra (Placement Level 6) *(Note: Students who initially place at a Level 5 or students who earn a C- in MTH 098 or students who earn an A in MTH 094 may take MTH 099 as a corequisite with MTH 104.)*
- MTH 160 Statistics I (Placement Level 7)
- MTH 161 Statistics II (Placement Level 7)

Note: As an alternative, students may also qualify for MTH 160 Statistics I via TRS 094 (Placement Level 1) and MTH 096 (Placement Level 4). (MTH 096 is intended only for students whose terminal math requirements is Statistics.) Students may also take MTH 160 with a corequisite of MTH 060 (at Placement Level 4) instead of MTH 096.

MTH 096 (Placement Level 4). MTH 096 is intended only for students whose terminal math requirement is Statistics.

To qualify to take MTH 210, Calculus 1 or higher, the following path is recommended:

- TRS 094 Pre-Algebra (Placement Levels 1,2 or 3)
- MTH 098 Elementary Algebra (Placement Level 4)
- MTH 104 Intermediate Algebra (Placement Level 6) (*Note: Students who initially place at a Level 5 or students who earn a C- in MTH 098 or students who earn an A in MTH 094 may take MTH 099 as a corequisite with MTH 104.*)
- MTH 165 College Algebra (Placement Level 8)
- MTH 175 Precalculus (Placement Level 9)
- MTH 210 Calculus 1 (Placement Level 10)
- Following the successful completion of MTH 210 Calculus I, students may continue with MTH 211 Calculus II and/or MTH 220 Discrete Math.
- Following the successful completion of MTH 211 Calculus II, students may continue with MTH 212 Calculus III and/or MTH 225 Differential Equations.
- Students are qualified to take MTH 230 Linear Algebra with the successful completion of MTH 212 Calculus III or the successful completion of both MTH 211 Calculus II and MTH 220 Discrete Math.

Note: Accelerated options exist for courses MTH 104/MTH 165 and MTH 165/MTH 175.

Note for all Pathways: TRS 094, MTH 060, MTH 098, and MTH 099 are imputed credit courses and do not count towards college degree.

Math Requirements for Programs in the School of Community Engagement & Development 2024-25 Academic Year

Code	Degree	Program	Math Requirements in Program	Math Requirement for Program Entrance
AS01	AS	Addictions Counseling	160	None
AS02	Cert	Addictions Counseling	None	None
ASC1	Cert	Advanced Studies	None	550 Math or Verbal SAT
CD01	AAS	Child Care Practitioner	150	None
CJ01	AS	Criminal Justice	160	None
CJ03	AAS	Criminal Justice - Police	130/up (MCC-QL) (160 recommended)	None
DD02	Cert	Direct Disability Support Services	None	None
EE02	Cert	Early Care	None	None
EM06	AS	Homeland Security	150/up (SUNY-M) /PHL 102	TRS 094 with a grade of C or better or MCC Level 4 Mathematics Placement
EM04	Cert	Homeland Security	None	None
HC01	AAS	Hospital & Community Mental Health Tech	150/up (SUNY-M)	None
HU01	AAS	Human Services	130/150/160	None
HU10	AS	Human Services	160	None
HU02	Cert	Human Services	None	None
EA03	AS	Liberal Arts & Sciences - Adolescence Education	150/up (SUNY-M) (150 is not appropriate if pursuing teacher certification in a mathematics/science/technology field.)	Pre-Algebra or TRS 094 at MCC (Level 3)
EC03	AS	Liberal Arts & Sciences -Childhood Education	155,156	Intermediate Algebra with Trigonometry or MTH 104 (Level 6)

Code	Degree	Program	Math Requirements in Program	Math Requirement for Program Entrance
EE03	AS	Liberal Arts & Sciences -Early Childhood Education	155,156	Intermediate Algebra with Trigonometry or MTH 104 (Level 6)
LA04	AS	Liberal Arts & Sciences -General Studies	150/up (SUNY-M) /PHL 102	Algebra (1 year high school math or placement into Level 4 Math at MCC)
PL01	Cert	Paralegal Studies	None	None
PV01	Cert	Private Security Studies	None	None
TA02	Cert	Teaching Assistant: Adolescence	2 of 150/up/NS&M	Algebra (1 year high school math or placement into Level 4 Math at MCC)
TA03	Cert	Teaching Assistant: Early Childhood/Childhood	155,156	Intermediate Algebra with Trigonometry or MTH 104 (Level 6)

Key:

- NS&M means any 3-4 credit natural sciences or mathematics elective. A comma means "and". A slash means "or". So 160,165/up means MTH 160 and MTH 165 (or higher).
- SUNY-M means that the course selected must be a SUNY General Education Mathematics course.
- MCC-QL means that the course selected must be an MCC General Education Quantitative Literacy course.

All information subject to change/correction.

See page 1 for a flow chart of math courses for this school.

Mathematics Accelerated Options: 2024-25 Academic Year

The options outlined here allow a student to complete more than one course in a semester. These are good choices for motivated students with strong study skills.

Co-requisite Courses

Courses	Credits and Hours	Prerequisite	Successful Result
TRS 050 with MTH 150	TRS 050: 1 imputed credit MTH 150: 3 credits 5 hours/wk	ENG 101 ready and Math placement level 2 or 3 or TRS 092 C or better	Credit for TRS 050 and Credit for MTH 150
MTH 060 with MTH 160	MTH 060: 1 imputed credit MTH 160: 3 credits 5 hours/wk	English 101 ready and math placement level 4 or TRS 094 C or better	Credit for MTH 060 and Credit for MTH 160
MTH 099 with MTH 104	MTH 099: 1 imputed credit MTH 104: 4 credits 6 hours/wk	Math placement level 5 or TRS 094 A or MTH 098 C- or MTH 096 B- or better	Credit for MTH 099 (equivalent to MTH 098) and Credit for MTH 104
MTH 104 with MTH 165 (FastTrack)	MTH 104: 4 credits MTH 165: 3 credits 7 hours/wk	Math placement level 6 or MTH 098 C or better (same as entry to MTH 104)	Credit for MTH 104 and Credit for MTH 165
MTH 165 with MTH 175 (FastTrack)	MTH 165: 3 credits MTH 175: 4 credits 7 hours/wk	Math placement level 8 or MTH 104 C or better (same as entry to MTH 165)	Credit for MTH 165 and Credit for MTH 175

Flexible Pace

Accelerating with Flexible Pace TRS 094

TRS 094 is offered in hybrid, remote/reduced (synchronous) and online (asynchronous) modalities.