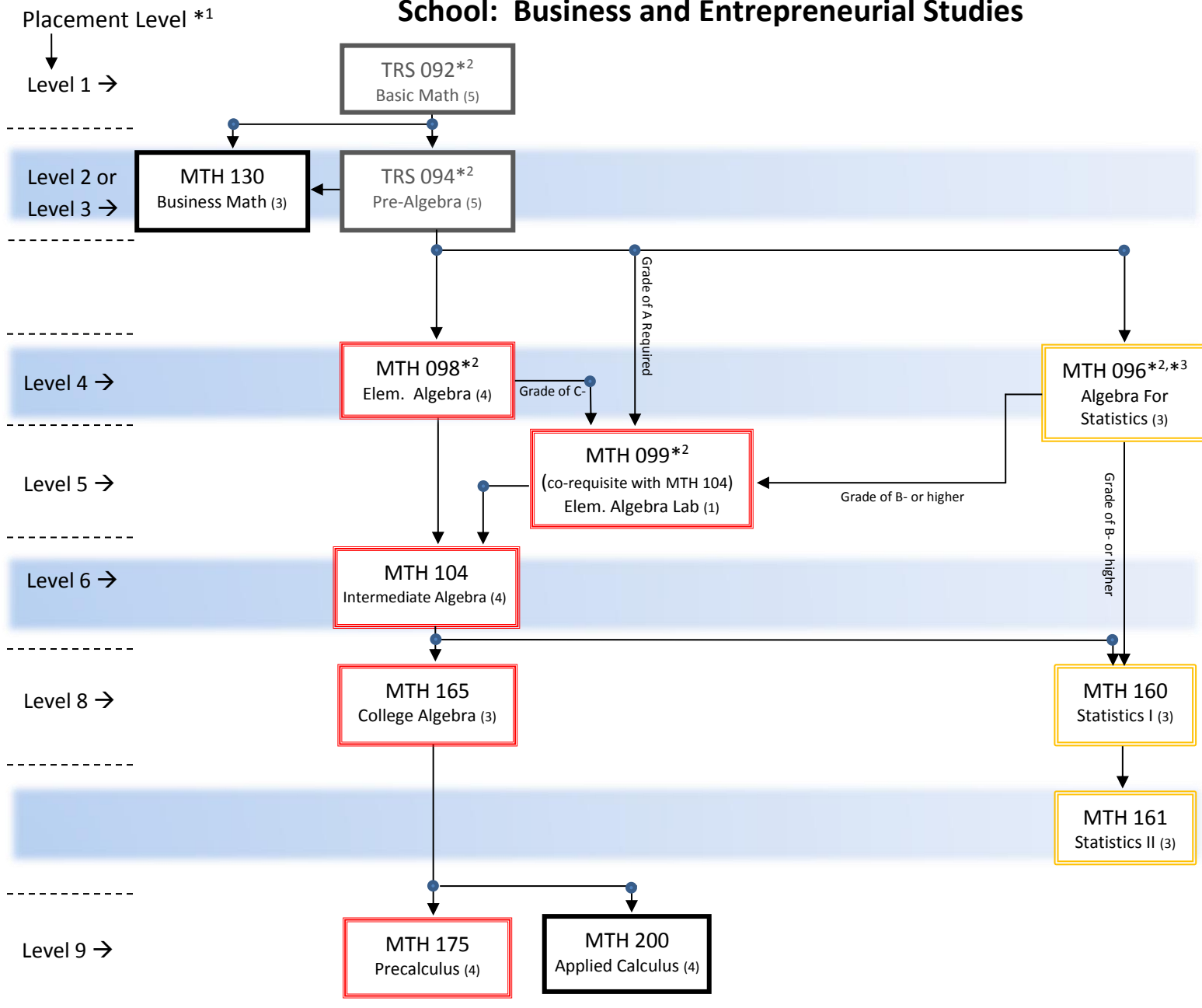


Which MCC Math Course Should I Take? 2017-2018 Academic Year

School: Business and Entrepreneurial Studies



Possible First Course – Depends on Major; Consult an Advisor

- LEVEL 1 → TRS 092*2
- LEVEL 2 or 3 → TRS 094*2 or MTH 130
- LEVEL 4 → MTH 096*2,*3 or 098*2 or 130
- LEVEL 5 → MTH 096*2,*3 or 099*2 & 104 or 130
- LEVEL 6 → MTH 096*2,*3 or 104 or 130
- LEVEL 8 → MTH 160 or 165
- LEVEL 9 → MTH 160 or 175 or 200
- LEVEL 10 → MTH 160 or 200 or 210 (Calculus I)

- *1 Student may take any course at placement level or lower level.
- *2 Imputed Credit Course. Does not count towards a college degree.
- *3 MTH 096 is intended only for students whose terminal math requirement is Statistics. It does NOT prepare students for any other level 8 course.
- *4 Unless otherwise specified, a grade of C or higher is required to progress on to the next math course.

See the next page for math requirements for each program in this school.

School: Business and Entrepreneurial Studies
2017-2018 Academic Year
Math Requirements for Programs

Code	Degree	Program	Math Requirements in Program	Math Requirement for Program Entrance
AC01	AAS	Accounting: General	130 recommended/104/up (not 150)	MCC Level 2 mathematics placement
ASC1	Cert	Advanced Studies	None	550 Math or Verbal SAT
BU01	AS	Business Administration	160, 165/up, 161/up (161/200 recommended)	Intermediate Algebra with Trigonometry (or MTH 104 at MCC)
BI01	AS	Business: International Business	160, 165/up (161/200 recommended as electives)	Recommended Preparation: Three years of high school mathematics through Intermediate Algebra
CI01	AAS	Computer Info. Systems	160, 165/up	Intermediate Algebra with Trigonometry (or MTH 104 at MCC)
CI02	AS	Computer Info. Systems	160, 165/up	Intermediate Algebra with Trigonometry (or MTH 104 at MCC).
EP01	AAS	Entrepreneurial and Applied Business Studies	104/up (not 130, not 150)	Intermediate Algebra with Trigonometry (or MTH 104 at MCC).
LA04	AS	Liberal Arts & Sciences - General Studies	150/up (recommend 160/165 for BE)	Algebra (1 year high school math or placement into Level 4 Math at MCC)
BS02	Cert	Small Business Management	130 recommended/104/up (not 150)	One year of high school math, including Business Math, Elementary Algebra with Geometry (or MTH 098 or MTH 130 at MCC)

Key: NS&M means any 3-4 credit natural sciences or mathematics elective. A comma means "and". A slash means "or". So 160,165/up means MTH 160 and MTH 165 (or higher).

All information subject to change/correction.

Revised 9-14-17