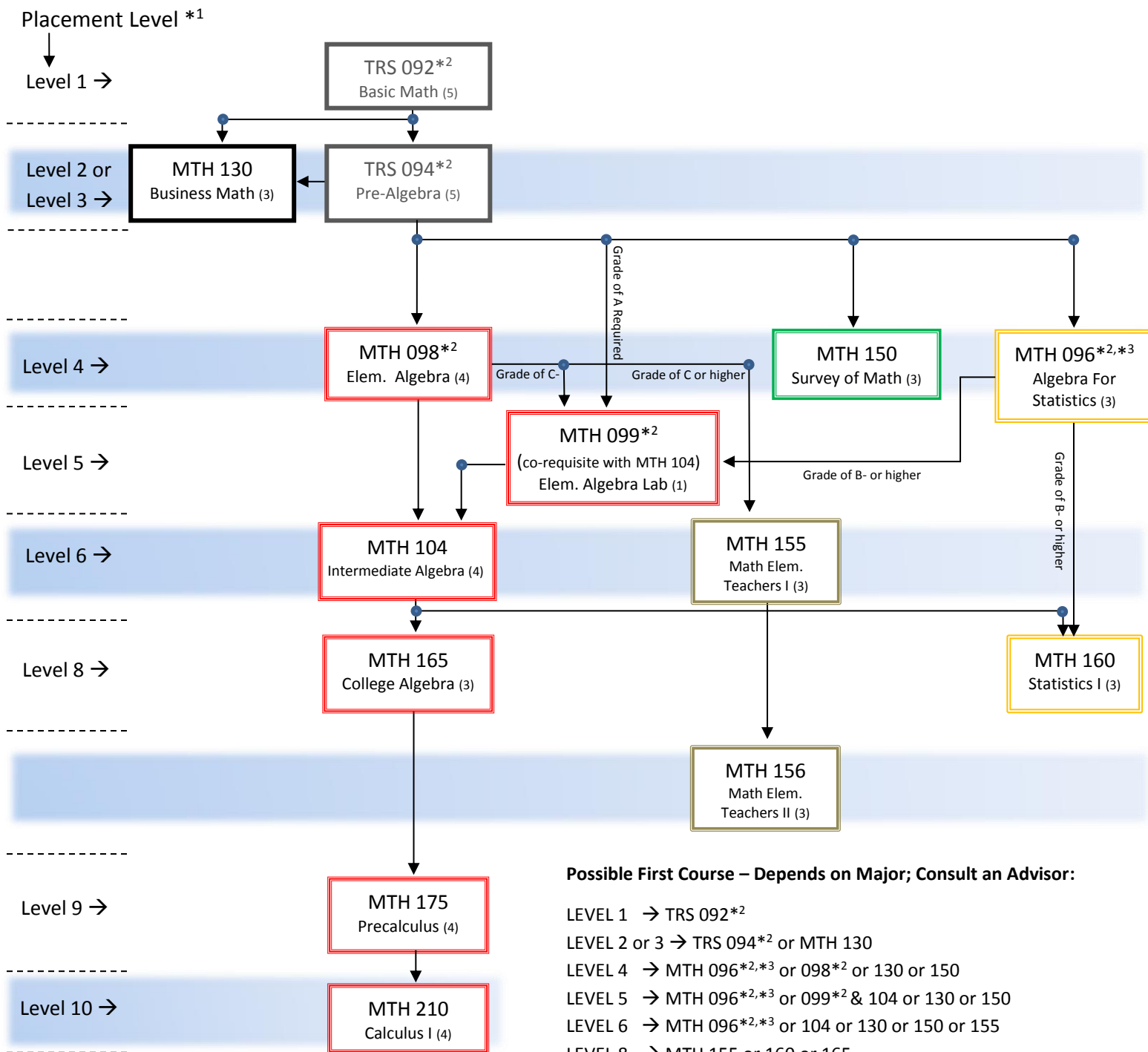


Which MCC Math Course Should I Take? 2017-2018 Academic Year

School: Community Engagement and Development



Possible First Course – Depends on Major; Consult an Advisor:

- LEVEL 1 → TRS 092*²
- LEVEL 2 or 3 → TRS 094*² or MTH 130
- LEVEL 4 → MTH 096*^{2,*3} or 098*² or 130 or 150
- LEVEL 5 → MTH 096*^{2,*3} or 099*² & 104 or 130 or 150
- LEVEL 6 → MTH 096*^{2,*3} or 104 or 130 or 150 or 155
- LEVEL 8 → MTH 155 or 160 or 165
- LEVEL 9 → MTH 155 or 160 or 175
- LEVEL 10 → MTH 155 or 160 or 210

- *1 Student may take any course at placement level or lower level.
- *2 Imputed Credit Course. Does not count towards a college degree.
- *3 MTH 096 is intended only for students whose terminal math requirement is Statistics. It does NOT prepare students for any other level 8 course.
- *4 Unless otherwise specified, a grade of C or higher is required to progress on to the next math course.

See the next page for the math requirements for each program in this school.

School: Community Engagement and Development
2017-2018 Academic Year
Math Requirements for Programs

Code	Degree	Program	Math Requirements in Program	Math Requirement for Program Entrance
AS01	AS	Addictions Counseling	160/up	MTH 096 (formerly MTH 080) with a grade of B- or higher, or MTH 104 with a grade of C or higher, or MCC Level 8 Mathematics Placement
AS02	Cert	Addictions Counseling	None	MCC Level 8 Mathematics placement for students with Associates degree and 4 years experience (no requirement for higher degree)
ASC1	Cert	Advanced Studies	None	550 Math or Verbal SAT
CD01	AAS	Child Care Practitioner	150/up	All college placement tests must be completed prior to full admission to the program
CJ01	AS	Criminal Justice	160	Intermediate Algebra with Trigonometry (or MTH 104 at MCC) or MCC level 8 Mathematics placement
CJ02	AAS	Criminal Justice - Institutional Corrections	130/up (160 recommended)	Algebra (1 year high school math or placement into Level 4 Math at MCC)
CJ03	AAS	Criminal Justice - Police	130/up (160 recommended)	Algebra (1 year high school math or placement into Level 4 Math at MCC)
DD02	Cert	Direct Disability Support Services	None	None
EE02	Cert	Early Care	None	None
HU01	AAS	Human Services	104/up	Algebra (1 year high school math or placement into Level 4 Math at MCC)
HU10	AS	Human Services	160, NS&M	Algebra (1 year high school math or placement into Level 4 Math at MCC)
HU02	Cert	Human Services	None	Elementary Algebra with Geometry (or MTH 098 at MCC)
EA01	AA	Liberal Arts & Sciences - Adolescence Education	150/up	Pre-Algebra or TRS 094 at MCC (Level 3)
EC01	AA	Liberal Arts & Sciences - Childhood Education	155, 156	Intermediate Algebra with Trigonometry or MTH 104 (Level 6)
EE01	AA	Liberal Arts & Sciences - Early Childhood Education	155, 156	Intermediate Algebra with Trigonometry or MTH 104 (Level 6)
LA04	AS	Liberal Arts & Sciences - General Studies	150/up	Algebra (1 year high school math or placement into Level 4 Math at MCC)
HU05	AS	Lib. Arts & Sci.-General Studies: Child Care Practitioner	150/up	Algebra (1 year high school math or placement into Level 4 Math at MCC)
PL01	Cert	Paralegal Studies	None	None
PV01	Cert	Private Security Studies	None	None
TA02	Cert	Teaching Assistant: Adolescence	2 of 150/up/NS&M	Algebra (1 year high school math or placement into Level 4 Math at MCC)
TA03	Cert	Teaching Assistant: Early Childhood/Childhood	155, 156	Intermediate Algebra with Trigonometry or MTH 104 (Level 6)
TA04	Cert	Teaching Assistant: Technology	150/up/NS&M	Algebra (1 year high school math or placement into Level 4 Math at MCC)
<p>Key: NS&M means any 3-4 credit natural sciences or mathematics elective. A comma means "and". A slash means "or". So 160,165/up means MTH 160 and MTH 165 (or higher).</p> <p>All information subject to change/correction. Revised 9-14-17</p>				