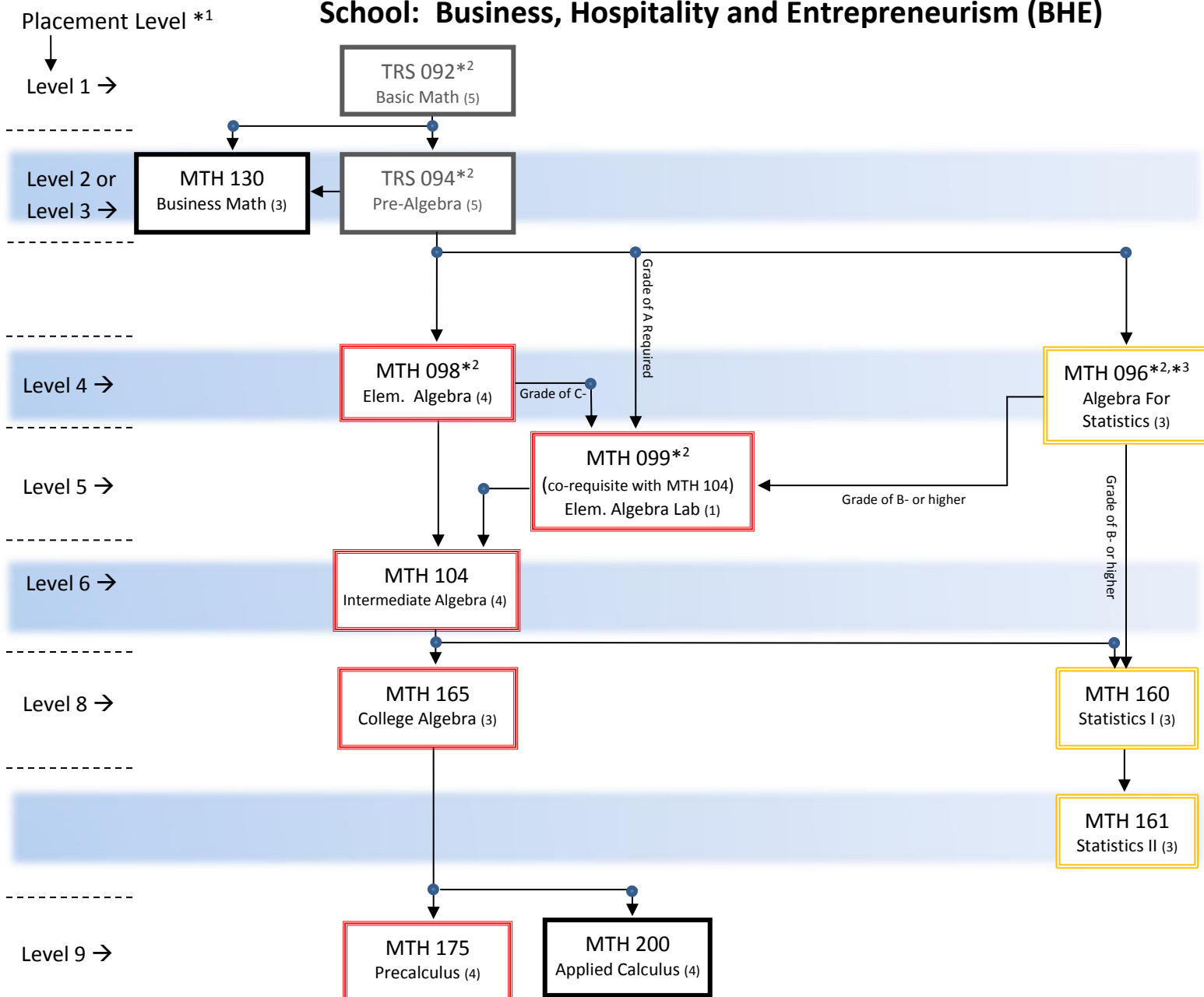


# Which MCC Math Course Should I Take? 2016-2017 Academic Year

## School: Business, Hospitality and Entrepreneurism (BHE)



### Possible First Course – Depends on Major; Consult an Advisor

- LEVEL 1 → TRS 092\*<sup>2</sup>
- LEVEL 2 or 3 → TRS 094\*<sup>2</sup> or MTH 130
- LEVEL 4 → MTH 096\*<sup>2,3</sup> or 098\*<sup>2</sup> or 130
- LEVEL 5 → MTH 096\*<sup>2,3</sup> or 099\*<sup>2</sup> & 104 or 130
- LEVEL 6 → MTH 096\*<sup>2,3</sup> or 104 or 130
- LEVEL 8 → MTH 160 or 165
- LEVEL 9 → MTH 160 or 175 or 200
- LEVEL 10 → MTH 160 or 200 or 210 (Calculus I)

\*1 Student may take any course at placement level or lower level.

\*2 Imputed Credit Course. Does not count towards a college degree.

\*3 MTH 096 is intended only for students whose terminal math requirement is Statistics. It does NOT prepare students for any other level 8 course.

\*4 Unless otherwise specified, a grade of C or higher is required to progress on to the next math course.

## School: Business, Hospitality and Entrepreneurism (BHE)

### 2016-2017 Academic Year

### Math Requirements for Programs

Code	Degree	Program	Math Requirements in Program	Math Requirement for Program Entrance
AC01	AAS	Accounting: General	130 recommended/104/up (not 150)	MCC Level 2 mathematics placement
BU01	AS	Business Administration	160, 165/up, 161/up (161/200 recommended)	Intermediate Algebra with Trigonometry (or Math 104 at MCC)
BI01	AS	Business: International Business	160, 165/up (161/200 recommended as electives)	None
CI01	AAS	Computer Info. Systems	160, 165/up	Intermediate Algebra with Trigonometry (or MTH 104 at MCC)
CI02	AS	Computer Info. Systems	160, 165/up	Intermediate Algebra with Trigonometry (or MTH 104 at MCC).
HM09	Cert	Culinary Arts	None	Algebra (1 year high school math or placement into Level 4 Math at MCC)
EP01	AAS	Entrepreneurial and Applied Business Studies	104/up (not 130, not 150)	Intermediate Algebra with Trigonometry (or MTH 104 at MCC).
HM08	Cert	Food Management	None	Pre-Algebra (1 year high school math or placement into Level 3 Math at MCC)
HM13	Cert	Golf Management	None	Pre-Algebra (1 year high school math or placement into Level 3 Math at MCC)
HM01	AAS	Hospitality Management	104/130/160/165/up	Algebra (1 year high school math or placement into Level 3 TRS 094 or MTH 130 or higher)
HM10	Cert	Hotel Management	None	Placement into TRS 094 or MTH 130 or higher
LA04	AS	Liberal Arts & Sciences - General Studies	150/up (recommend 160/165 for BHE)	Algebra (1 year high school math or placement into Level 4 Math at MCC)
LA10	AS	Lib. Arts & Sci. - General Studies - Nutrition	160, 165/up	Regents Course III or Math B or Algebra II with Trigonometry with a 75 or higher or MTH 104/140 or placement into Math Level 8 at MCC
OF02	AAS	Office Tech.: Office Administrative Assistant	130/up	Algebra (1 year high school math or placement into Level 3 Math at MCC)
OF06	Cert	Office Technology: Medical Office Assistant	130	Algebra (1 year high school math or placement into Level 3 Math at MCC)
BS02	Cert	Small Business Management	130 recommended/104/up (not 150)	One year of high school math, including Business Math, Elementary Algebra with Geometry (or MTH 098 or MTH 130 at MCC)
HM11	Cert	Travel and Tourism	None	Pre-Algebra (1 year high school math or placement into Level 3 (TRS 094 or MTH 130) or higher)

**Key:** NS&M means any 3-4 credit natural sciences or mathematics elective. A comma means "and". A slash means "or". So 160,165/up means MTH 160 and MTH 165 (or higher).

All information subject to change/correction. Revised 11-21-16