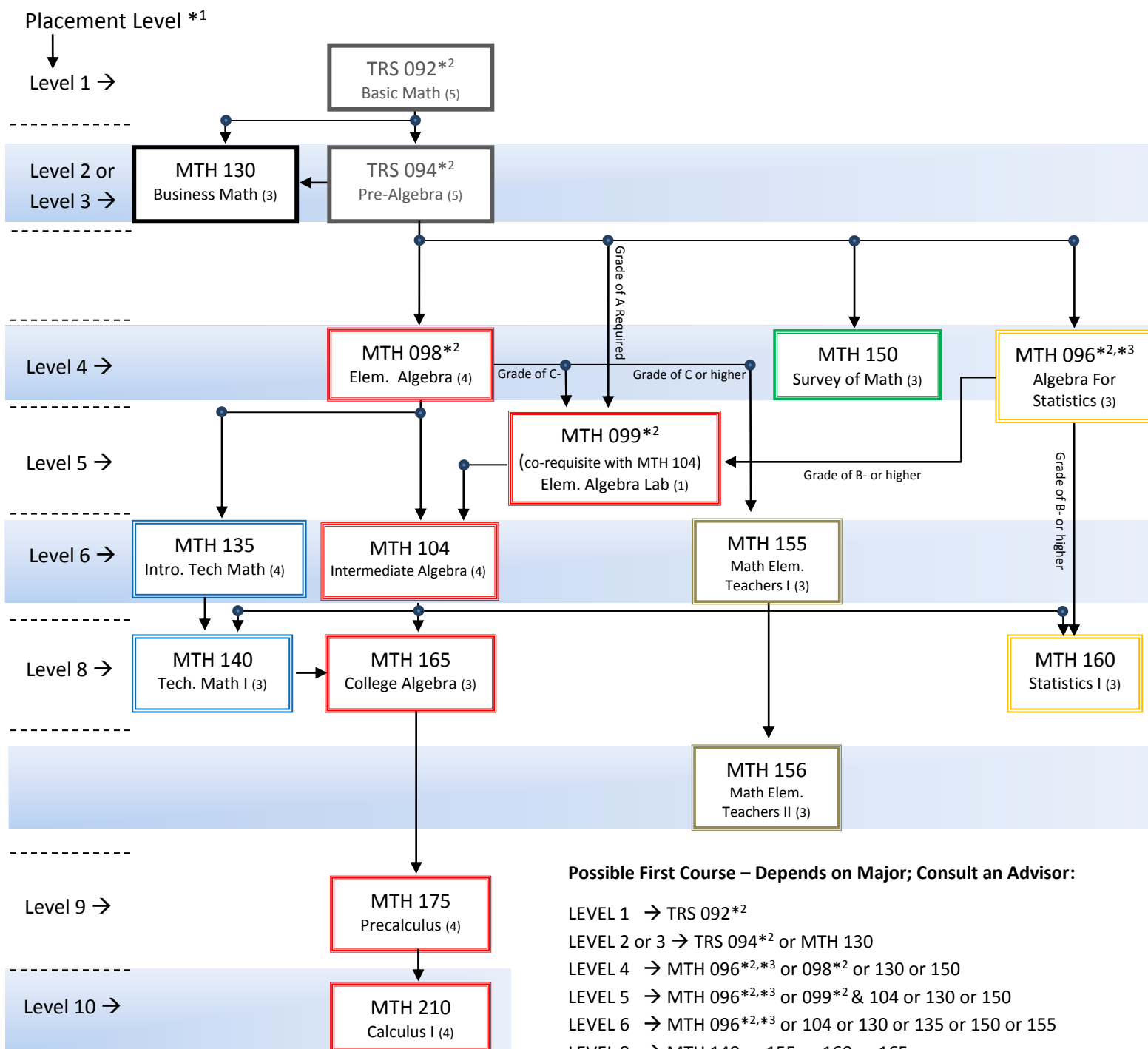


Which MCC Math Course Should I Take? 2016-2017 Academic Year

School: Community Engagement and Development (CED)



Possible First Course – Depends on Major; Consult an Advisor:

LEVEL 1 → TRS 092*2

LEVEL 2 or 3 → TRS 094*2 or MTH 130

LEVEL 4 → MTH 096*2,*3 or 098*2 or 130 or 150

LEVEL 5 → MTH 096*2,*3 or 099*2 & 104 or 130 or 150

LEVEL 6 → MTH 096*2,*3 or 104 or 130 or 135 or 150 or 155

LEVEL 8 → MTH 140 or 155 or 160 or 165

LEVEL 9 → MTH 155 or 160 or 175

LEVEL 10 → MTH 155 or 160 or 210

*1 Student may take any course at placement level or lower level.

*2 Imputed Credit Course. Does not count towards a college degree.

*3 MTH 096 is intended only for students whose terminal math requirement is Statistics. It does NOT prepare students for any other level 8 course.

*4 Unless otherwise specified, a grade of C or higher is required to progress on to the next math course.

School: Community Engagement and Development (CED)

2016-2017 Academic Year

Math Requirements for Programs

Code	Degree	Program	Math Requirements in Program	Math Requirement for Program Entrance
AS01	AS	Addictions Counseling	160/up	MTH 096 (formerly MTH 080) with a grade of B- or higher, or MTH 104 with a grade of C or higher, or MCC Level 8 Mathematics Placement
AS03	AS	Addictions Counseling - Experiential Focus Track	160/up	MTH 096 (formerly MTH 080) with a grade of B- or higher, or MTH 104 with a grade of C or higher, or MCC Level 8 Mathematics Placement
AS04	AS	Addictions Counseling - Reentry from Incarceration	160/up	MTH 096 (formerly MTH 080) with a grade of B- or higher, or MTH 104 with a grade of C or higher, or MCC Level 8 Mathematics Placement
AS02	Cert	Addictions Counseling	None	MCC Level 8 Mathematics placement for students with Associates degree and 4 years experience (no requirement for higher degree)
CJ01	AS	Criminal Justice	160	Intermediate Algebra with Trigonometry (or MTH 104 at MCC) or MCC level 8 Mathematics placement
CJ02	AAS	Criminal Justice - Institutional Corrections	130/up (160 recommended)	Algebra (1 year high school math or placement into Level 4 Math at MCC)
CJ03	AAS	Criminal Justice - Police Science	130/up (160 recommended)	Algebra (1 year high school math or placement into Level 4 Math at MCC)
DD02	Cert	Direct Disability Support Services	None	None
EE02	Cert	Early Care	None	None
EM02	Cert	Emergency Medical Services	150/up	Elementary Algebra with Geometry (or MTH 098 at MCC)
FR01	AAS	Fire Protection Technology	104/135/140/141/150/160/up	Algebra (1 year high school math or placement into Level 4 Math at MCC)
EM06	AS	Homeland Security	150/up SUNY Gen. Ed.	TRS 094 with a grade of C or better, or MCC Level 4 Mathematics Placement
EM04	Cert	Homeland Security	None	Placement at MCC Math Level 4 or above
HU01	AAS	Human Services	104/up	Algebra (1 year high school math or placement into Level 4 Math at MCC)
HU10	AS	Human Services	160, NS&M	Algebra (1 year high school math or placement into Level 4 Math at MCC)
HU02	Cert	Human Services	None	Elementary Algebra with Geometry (or MTH 098 at MCC)
LE02	Cert	Law Enforcement	None	None
EA01	AA	Lib. Arts & Sci. - Education: Adolescence Education	150/up	Pre-Algebra or TRS 094 at MCC (Level 3)
EC01	AA	Lib. Arts & Sci. - Education: Childhood Education	155, 156	Intermediate Algebra with Trigonometry or MTH 104 (Level 6)
EE01	AA	Lib. Arts & Sci.- Education: Early Childhood Education	155, 156	Intermediate Algebra with Trigonometry or MTH 104 (Level 6)
HU05	AS	Lib. Arts & Sci.-General Studies: Child Care Practitioner	150/up	Algebra (1 year high school math or placement into Level 4 Math at MCC)
ED01	AS	Lib. Arts & Sci.-General Studies: Teacher Educ. - Undecided	150/up	Algebra (1 year high school math or placement into Level 4 Math at MCC)
PL01	Cert	Paralegal Studies	None	None
EM01	AAS	Paramedic	150/up	Elementary Algebra with Geometry (or MTH 098 at MCC)
EM05	Cert	Paramedic Certificate	None	None
PV01	Cert	Private Security Studies	None	None
PS01	AAS	Public Safety Communications	104/135/140/141/150/160/up	Recommend high school course in math
TA02	Cert	Teaching Assistant: Adolescence	2 of 150/up/NS&M	Algebra (1 year high school math or placement into Level 4 Math at MCC)
TA03	Cert	Teaching Assistant: Early Childhood/Childhood	155, 156	Intermediate Algebra with Trigonometry or MTH 104 (Level 6)
TA04	Cert	Teaching Assistant: Technology	150/up/NS&M	Algebra (1 year high school math or placement into Level 4 Math at MCC)

Key: NS&M means any 3-4 credit natural sciences or mathematics elective. A comma means "and". A slash means "or". So 160,165/up means MTH 160 and MTH 165 (or higher).

All information subject to change/correction. Revised 11-21-16