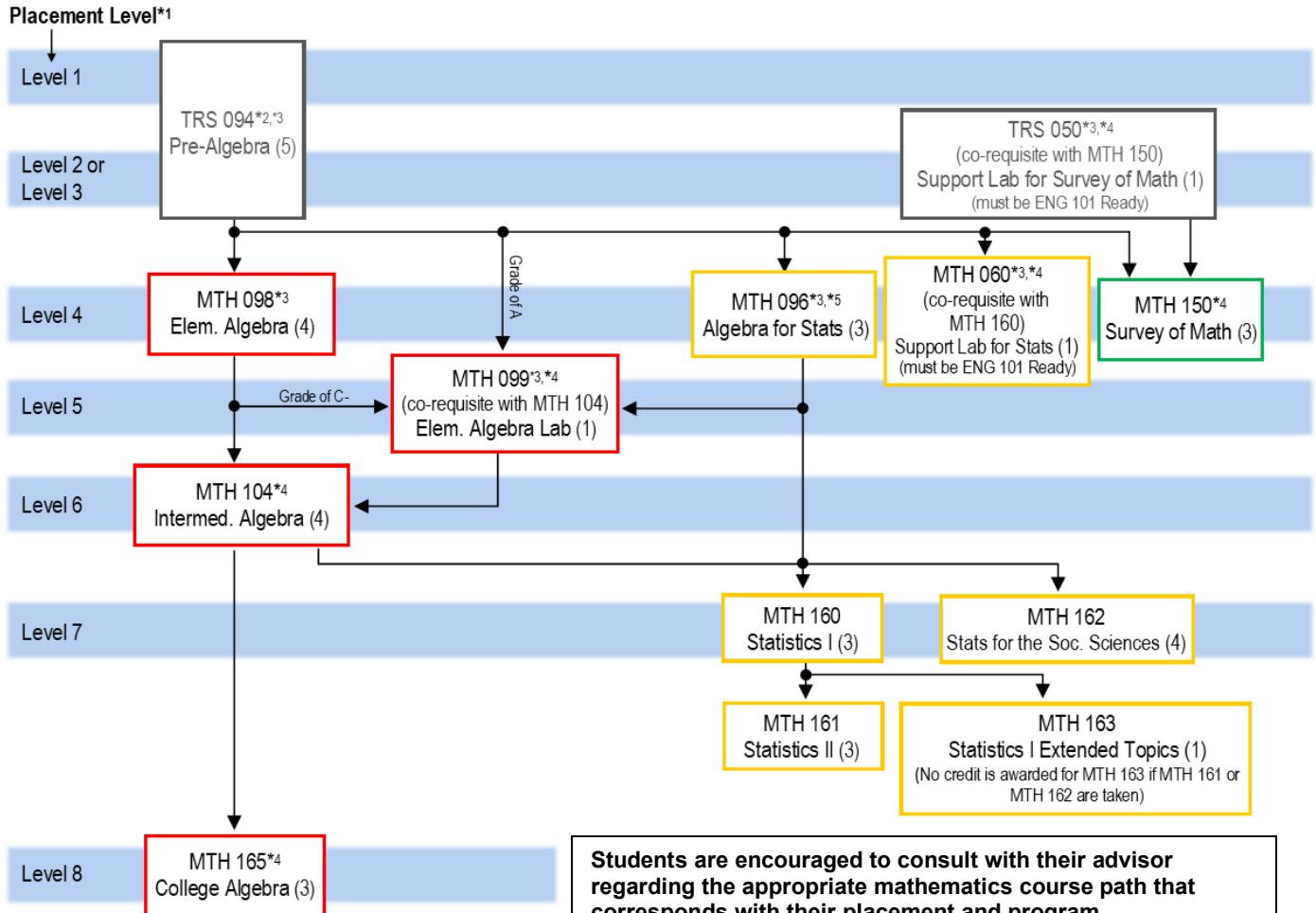




Mathematics Course Paths School of Social Sciences and Global Studies 2024–25 Academic Year



Students are encouraged to consult with their advisor regarding the appropriate mathematics course path that corresponds with their placement and program.

Unless otherwise specified, a grade of C or higher is required to progress to the next math course.

- *1 Student may take any course at placement level or lower level.
- *2 Flexible Pace options available.
- *3 Imputed Credit Course. Does not count towards a college degree.
- *4 Available as an accelerated option; refer to the Accelerated Options Table.
- *5 MTH 096 is intended only for students whose terminal math requirement is Statistics.

Please refer to the following pages for additional notes, references, and text outline of the chart.

Which Math Course Should I Take?

School of Social Sciences and Global Studies

Students in this school have different math goals. Each pathway is described below. Students may start at any course at placement level (or lower) and proceed along the pathway until their math goals are met. *(Note: in each pathway, a grade of C or higher is required to move to the next course unless otherwise stated.)*

To qualify to take MTH 150 Survey of Math, the following path is recommended:

- TRS 094 Pre-Algebra (Placement Levels 1,2 or 3) OR TRS 050 Support Lab for Survey of Math (Placement Levels 2 or 3) as a co-requisite with MTH 150
- MTH 150 Survey of Math (Placement Level 4)

To qualify to take MTH 160 Statistics I, MTH 161 Statistics II, or MTH 162 Statistics for the Social Sciences, the following path is recommended:

- TRS 094 Pre-Algebra (Placement Levels 1,2 or 3)
- MTH 098 Elementary Algebra (Placement Level 4)
- MTH 104 Intermediate Algebra (Placement Level 6) *(Note: Students who initially place at a Level 5 or students who earn a C- in MTH 098 or students who earn an A in MTH 094 may take MTH 099 as a corequisite with MTH 104.)*
- MTH 160 Statistics I (Placement Level 7) or MTH 162 Statistics for the Social Sciences (Placement Level 7)
- MTH 161 Statistics II (Placement Level 7) or MTH 163 Statistics I Extended Topics (Placement Level 7; no credit is awarded for MTH 162 if MTH 161 or MTH 162 are taken.)

Note As an alternative, students may also qualify for MTH 160 Statistics I via TRS 094 (Placement Level 1) and MTH 096 (Placement Level 4). (MTH 096 is intended only for students whose terminal math requirements is Statistics.) Students may also take MTH 160 with a corequisite of MTH 060 (at Placement Level 4) instead of MTH 096.

To qualify to take MTH 165, College Algebra, the following path is recommended:

- TRS 094 Pre-Algebra (Placement Levels 1,2 or 3)
- MTH 098 Elementary Algebra (Placement Level 4)
- MTH 104 Intermediate Algebra (Placement Level 6) *(Note: Students who initially place at a Level 5 or students who earn a C- in MTH 098 or students who earn an A in MTH 094 may take MTH 099 as a corequisite with MTH 104.)*
- MTH 165 College Algebra (Placement Level 8)

Note: Accelerated options exist for courses MTH 104/MTH 165.

Note for all Pathways: TRS 094, MTH 060, MTH 098, and MTH 099 are imputed credit courses and do not count towards a college degree.

Math Requirements for Programs in the School of Social Sciences and Global Studies 2024-2025 Academic Year

Code	Degree	Program	Math Requirements in Program	Math Requirement for Program Entrance
ASC1	Cert	Advanced Studies	None	550 Math or Verbal SAT
LA04	AS	Liberal Arts and Sciences - General Studies	150/up (SUNY-M) /PHL 102	Algebra (1 year high school math or placement into level 4 math at MCC)
PC01	AS	Psychology	162/(160,163)/(160,161)	MCC Level 4 mathematics placement

Key:

- SUNY-M means that the course selected must be a SUNY General Education Mathematics course.

All information subject to change/correction.

See page 1 for a flow chart of math courses for this school.

Mathematics Accelerated Options

The options outlined here allow a student to complete more than one course in a semester. These are good choices for motivated students with strong study skills.

Co-requisite Courses

Courses	Credits and Hours	Prerequisite	Successful Result
TRS 050 with MTH 150	TRS 050: 1 imputed credit MTH 150: 3 credits 5 hours/week	ENG 101 ready and Math placement level 2 or 3 or TRS 092 C or better	Credit for TRS 050 and Credit for MTH 150
MTH 099 with MTH 104	MTH 099: 1 imputed credit MTH 104: 4 credits 6 hours/week	Math placement level 5 or TRS 094 A or MTH 098 C- or MTH 096 B- or better	Credit for MTH 099 (equivalent to MTH 098) and Credit for MTH 104
MTH 060 with MTH 160	MTH 060: 1 imputed credit MTH 160: 3 credits 5 hours/week	English 101 ready and math placement level 4 or TRS 094 C or better	Credit for TRS 060 and Credit for MTH 160
MTH 104 with MTH 165 (FastTrack)	MTH 104: 4 credits MTH 165: 3 credits 7 hours/week	Math placement level 6 or MTH 098 C or better (same as entry to MTH 104)	Credit for MTH 104 and Credit for MTH 165
MTH 165 with MTH 175 (FastTrack)	MTH 165: 3 credits MTH 175: 4 credits 7 hours/wk	Math placement level 8 or MTH 104 C or better (same as entry to MTH 165)	Credit for MTH 165 and Credit for MTH 17

To register for the linked courses, sign up for both courses, with the same section number. For example: TRS-050-103 and MTH-150-103 or MTH-165-301 and MTH-175-301.

Flexible Pace

TRS 094

Offered in hybrid, remote/reduced (synchronous) and online (asynchronous) modalities.