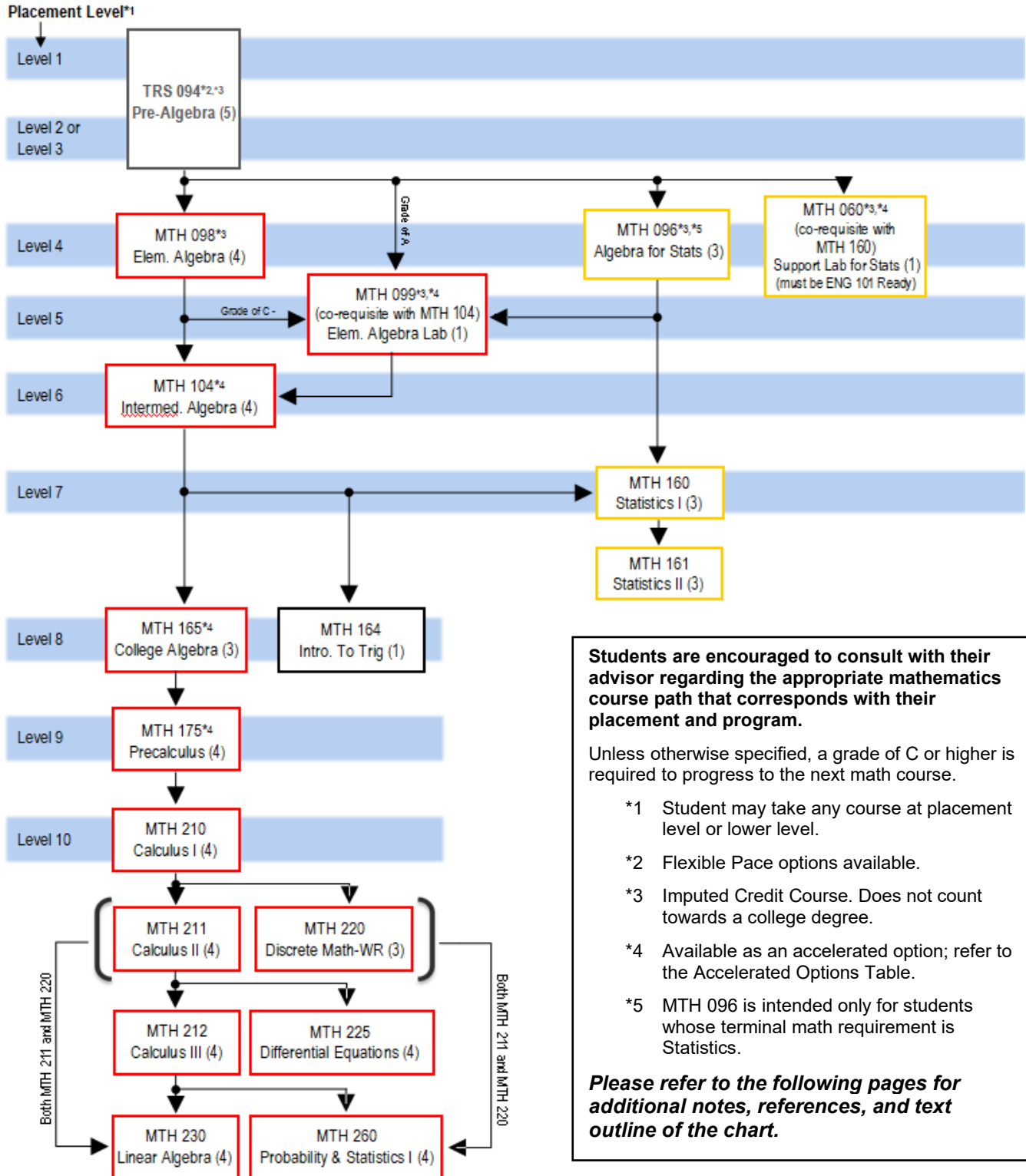




## Mathematics Course Paths School of Science, Technology, Engineering and Math (STEM) 2024–25 Academic Year



## **Which MCC Math Course Should I Take? School of Science, Technology, Engineering, and Math (STEM)**

Students in this school typically work through the Calculus or Statistics pathways. Each pathway is described below. STEM students may start at any course at placement level (or lower) and proceed along the pathway until their math goals are met. (*Note: in each pathway, a grade of C or higher is required to move to the next course unless otherwise stated.*)

***To qualify to take MTH 210, Calculus 1 or higher, the following path is recommended:***

- TRS 094 Pre-Algebra (Placement Levels 1,2 or 3)
- MTH 098 Elementary Algebra (Placement Level 4)
- MTH 104 Intermediate Algebra (Placement Level 6) (*Note: Students who initially place at a Level 5 or students who earn a C- in MTH 098 or students who earn an A in MTH 094 may take MTH 099 as a corequisite with MTH 104.*)
- MTH 165 College Algebra (Placement Level 8)
- MTH 175 Precalculus (Placement Level 9)
- MTH 210 Calculus 1 (Placement Level 10)
- Following the successful completion of MTH 210 Calculus I, students may continue with MTH 211 Calculus II and/or MTH 220 Discrete Math.
- Following the successful completion of MTH 211 Calculus II, students may continue with MTH 212 Calculus III and/or MTH 225 Differential Equations.
- Students are qualified to take MTH 230 Linear Algebra with the successful completion of MTH 212 Calculus III or the successful completion of both MTH 211 Calculus II and MTH 220 Discrete Math.
- Students are qualified to take MTH 260 Probability and Statistics with the successful completion of MTH 212 Calculus III or the successful completion of both MTH 211 Calculus II and MTH 220 Discrete Math.

*Note: Accelerated options exist for courses MTH 104/MTH 165, and MTH 165/MTH 175.*

***To qualify to take MTH 160 Statistics I or MTH 161 Statistics II, the following path option is recommended.***

- TRS 094 Pre-Algebra (Placement Levels 1,2 or 3)
- MTH 098 Elementary Algebra (Placement Level 4)
- MTH 104 Intermediate Algebra (Placement Level 6) (*Note: Students who initially place at a Level 5 or students who earn a C- in MTH 098 or students who earn an A in MTH 094 may take MTH 099 as a corequisite with MTH 104.*)
- MTH 160 Statistics I (Placement Level 7)
- MTH 161 Statistics II (Placement Level 7)

*Note As an alternative, students may also qualify for MTH 160 Statistics I via TRS 094 (Placement Level 1) and MTH 096 (Placement Level 4). (MTH 096 is intended only for students whose terminal math requirements is Statistics.) Students may also take MTH 160 with a corequisite of MTH 060 (at Placement Level 4) instead of MTH 096.*

*Note: TRS 094, MTH 060, MTH 098, and MTH 099 are imputed credit courses and do not count towards a college degree.*

## Math Requirements for Programs in the School of Science, Technology, Engineering and Math 2024-25 Academic Year

Code	Degree	Program	Math Requirements in Program	Math Requirement for Program Entrance
ASC1	Cert	Advanced Studies	None	550 Math or Verbal SAT
AG02	Cert	Agriculture and Food Studies	None	None
LSB1	AS	Biology	160,175/210/211	Students who plan to complete this program in 2 years should have a math placement at the Level 9 or MTH 165 at MCC with a grade of "C" or higher or permission of the MCC Biology Dept.
BT01	AAS	Biotechnology	160, 161, (165/175/210/211/212)	Intermediate Algebra with Trigonometry (or MTH 104 at MCC)
LSC1	AS	Chemistry	210,211	MCC Level 9 Mathematics placement or MTH 165 (grade of C or better)
EN01	AS	Engineering Science	210,211,212,225	MCC Level 10 Mathematics placement
GG01	AS	Geography	160/162/165/up (SUNY-M)	MCC Level 7 Mathematics Placement
GS01	AS	Geology	(175/210),(210/211),(211/160)	Intermediate Algebra (MTH 104 at MCC) or MCC Level 8 Mathematics placement
GG10	AAS	Geospatial Information Science Technology	160	MCC Level 6 Mathematics Placement
GG02	Cert	Geospatial Info. Science & Tech.	None	None
LA04	AS	Liberal Arts & Sciences -General Studies	150/up (SUNY-M) /PHL 102 (160/165/up recommended)	Algebra (1 year high school math or placement into Level 4 Math at MCC)

Code	Degree	Program	Math Requirements in Program	Math Requirement for Program Entrance
MC02	AS	Mathematics	210,211,212,220,230	MTH 175 with a grade of C or higher, or high school Precalculus with a grade of B (83) or higher, or MCC Level 10 Mathematics placement
PY01	AS	Physics	210,211,212,225,230	HS Precalculus (exam score $\geq 83$ ) or Level 10 Math at MCC or MTH 175 (grade of C or better)
SC01	Cert	Sustainability	None	Algebra (1 year high school math or placement into Level 4 Math at MCC)
SC02	AS	Sustainability Studies - Science Track	165/up (SUNY-M)	Level 8 Math or completion of MTH 104 with a C or higher or Algebra II with Trigonometry with a C or higher.
SC02	AS	Sustainability Studies - Sustainability Studies Track	160,165/up (SUNY-M)	Level 8 Math or completion of MTH 104 with a C or higher or Algebra II with Trigonometry with a C or higher.

**Key:** A comma means "and". A slash means "or". So 160,165/up means MTH 160 and MTH 165 (or higher).  
SUNY-M means that the course selected must be a SUNY General Education Mathematics course.

***All information subject to change/correction.***

## Mathematics Accelerated Options

The options outlined here allow a student to complete more than one course in a semester. These are good choices for motivated students with strong study skills.

### Co-requisite Courses

Courses	Credits and Hours	Prerequisite	Successful Result
<b>TRS 050 with MTH 150</b>	TRS 050: 1 imputed credit MTH 150: 3 credits 5 hours/week	ENG 101 ready and Math placement level 2 or 3 or TRS 092 C or better	Credit for TRS 050 and Credit for MTH 150
<b>MTH 099 with MTH 104</b>	MTH 099: 1 imputed credit MTH 104: 4 credits 6 hours/week	Math placement level 5 or TRS 094 A or MTH 098 C- or MTH 096 with a C- or better	Credit for MTH 099 (equivalent to MTH 098) and Credit for MTH 104
<b>MTH 060 with MTH 160</b>	MTH 060: 1 imputed credit MTH 160: 3 credits 5 hours/week	English 101 ready and math placement level 4 or TRS 094 C or better	Credit for TRS 060 and Credit for MTH 160
<b>MTH 104 with MTH 165 (FastTrack)</b>	MTH 104: 4 credits MTH 165: 3 credits 7 hours/week	Math placement level 6 or MTH 098 C or better (same as entry to MTH 104)	Credit for MTH 104 and Credit for MTH 165
<b>MTH 165 with MTH 175 (FastTrack)</b>	MTH 165: 3 credits MTH 175: 4 credits 7 hours/wk	Math placement level 8 or MTH 104 C or better (same as entry to MTH 165)	Credit for MTH 165 and Credit for MTH 175

To register for the linked courses, sign up for both courses, with the same section number. For example: TRS-050-103 and MTH-150-103 or MTH-165-301 and MTH-175-301.

### Flexible Pace

Accelerating with Flexible Pace TRS 094

TRS 094 is offered in hybrid, remote/reduced (synchronous) and online (asynchronous) modalities.