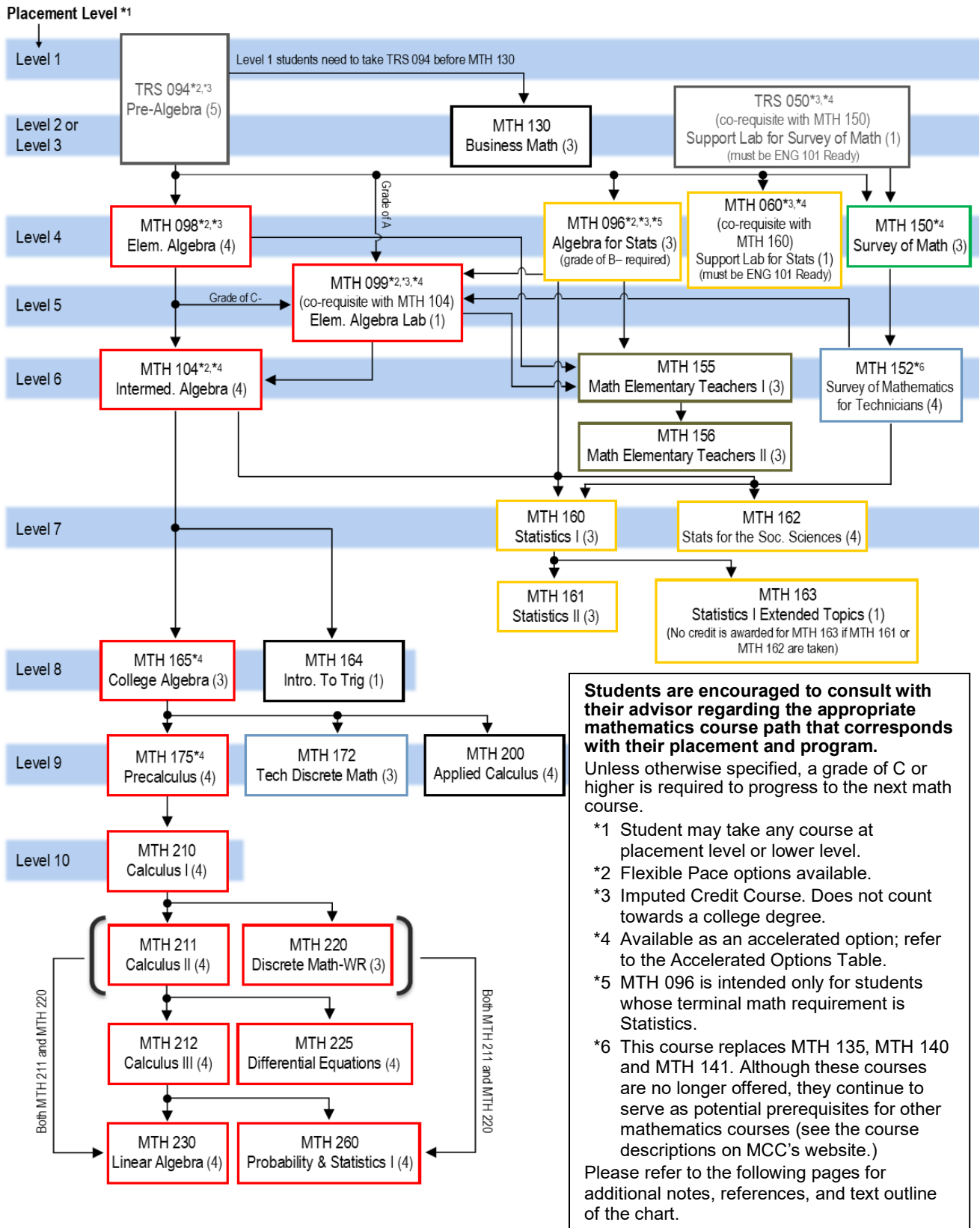




Mathematics Course Paths 2024–25 Academic Year



Which MCC Math Course Should I Take?

Mathematics Course Paths

Students have different math goals. Each pathway is described below. Students may start at any course at placement level (or lower) and proceed along the pathway until their math goals are met. (*Note: in each pathway, a grade of C or higher is required to move to the next course unless otherwise stated.*)

To qualify to take MTH 130 Business Math, the following path is recommended:

- TRS 094 Pre-Algebra (Placement Levels 1,2 or 3)
- MTH 130 Business Math (Placement Levels 2 or 3)

To qualify to take MTH 150 Survey of Math or MTH 152 Survey of Mathematics for Technicians, the following path is recommended:

- TRS 094 Pre-Algebra (Placement Levels 1,2 or 3) OR TRS 050 Support Lab for Survey of Math (Placement Levels 2 or 3) as a co-requisite with MTH 150
- MTH 150 Survey of Math (Placement Level 4)
- MTH 152 Survey of Mathematics for Technicians (Placement Level 6)

To qualify to take MTH 155 Math Elementary Teachers I or MTH 156 math Elementary Teachers II, the following path is recommended:

- TRS 094 Pre-Algebra (Placement Levels 1,2 or 3)
- MTH 098 Elementary Algebra (Placement Level 4) or MTH 099 Elementary Algebra Lab (Placement Level 5)
- MTH 155 Math Elementary Teachers I (Placement Level 6)
- MTH 156 Math Elementary Teachers II (Placement Level 6)

To qualify to take MTH 160 Statistics I, MTH 161 Statistics II, or MTH 162 Statistics for the Social Sciences, the following paths are recommended:

Path 1

- TRS 094 Pre-Algebra (Placement Levels 1,2 or 3)
- MTH 098 Elementary Algebra (Placement Level 4)
- MTH 104 Intermediate Algebra (Placement Level 6) (*Note: Students who initially place at a Level 5 or students who earn a C- in MTH 098 or students who earn an A in MTH 098 may take MTH 099 as a corequisite with MTH 104.*)
- MTH 160 Statistics I (Placement Level 7) or MTH 162 Statistics for the Social Sciences (Placement Level 7)
- MTH 161 Statistics II (Placement Level 7) or MTH 163 Statistics I Extended Topics (Placement Level 7; no credit is awarded for MTH 162 if MTH 161 or MTH 162 are taken.)

Note As an alternative, students may also qualify for MTH 160 Statistics I via TRS 094 (Placement Level 1) and MTH 096 (Placement Level 4). (MTH 096 is intended only for students whose terminal math requirements is Statistics.) Students may also take MTH 160 with a corequisite of MTH 060 (at Placement Level 4) instead of MTH 096.

Path 2

- TRS 094 Pre-Algebra OR TRS 050 (Placement Level 2 or 3) Support Lab for MTH 150 Survey of Math (must be ENG 101 ready)
- MTH 150 Survey of Math (Placement Level 4)
- MTH 152 Survey of Mathematics for Technicians (Placement Level 6)
- MTH 160 Statistics I (Placement Level 7) or MTH 162 Statistics for the Social Sciences (Placement Level 7)
- MTH 161 Statistics II (Placement Level 7) or MTH 163 Statistics I Extended Topics (Placement Level 7; no credit is awarded for MTH 162 if MTH 161 or MTH 162 are taken.).

To qualify to take MTH 175 Precalculus, MTH 172 Tech Discrete Math or MTH 200 Applied Calculus, the following path is recommended:

- TRS 094 Pre-Algebra (Placement Levels 1,2 or 3)
- MTH 098 Elementary Algebra (Placement Level 4)
- MTH 104 Intermediate Algebra (Placement Level 6) (*Note: Students who initially place at a Level 5 or students who earn a C- in MTH 098 or students who earn an A in MTH 094 may take MTH 099 as a corequisite with MTH 104.*)
- MTH 165 College Algebra (Placement Level 8)
- MTH 175 Precalculus OR MTH 172 Tech Discrete Math OR MTH 200 Applied Calculus (Placement Level 9)

To qualify to take MTH 210, Calculus 1 or higher, the following path is recommended:

- TRS 094 Pre-Algebra (Placement Levels 1,2 or 3)
- MTH 098 Elementary Algebra (Placement Level 4)
- MTH 104 Intermediate Algebra (Placement Level 6) (*Note: Students who initially place at a Level 5 or students who earn a C- in MTH 098 or students who earn an A in MTH 094 may take MTH 099 as a corequisite with MTH 104.*)
- MTH 165 College Algebra (Placement Level 8)
- MTH 175 Precalculus (Placement Level 9)
- MTH 210 Calculus 1 (Placement Level 10)
- Following the successful completion of MTH 210 Calculus I, students may continue with MTH 211 Calculus II and/or MTH 220 Discrete Math.
- Following the successful completion of MTH 211 Calculus II, students may continue with MTH 212 Calculus III and/or MTH 225 Differential Equations.
- Students are qualified to take MTH 230 Linear Algebra with the successful completion of MTH 212 Calculus III or the successful completion of both MTH 211 Calculus II and MTH 220 Discrete Math.
- Students are qualified to take MTH 260 Probability and Statistics with the successful completion of MTH 212 Calculus III or the successful completion of both MTH 211 Calculus II and MTH 220 Discrete Math.

Note: Accelerated options exist for courses MTH 104/MTH 165, and MTH 165/MTH 175.

Note for all Pathways: TRS 094, MTH 060, MTH 098, and MTH 099 are imputed credit courses and do not count towards a college degree.

Mathematics Accelerated Options

The options outlined here allow a student to complete more than one course in a semester. These are good choices for motivated students with strong study skills.

Co-requisite Courses

| Courses | Credits and Hours | Prerequisite | Successful Result |
|---|---|--|---|
| TRS 050 with MTH 150 | TRS 050: 1 imputed credit MTH 150: 3 credits 5 hours/week | ENG 101 ready and Math placement level 2 or 3 or TRS 092 C or better | Credit for TRS 050 and Credit for MTH 150 |
| MTH 099 with MTH 104 | MTH 099: 1 imputed credit MTH 104: 4 credits 6 hours/week | Math placement level 5 or TRS 094 A or MTH 098 C- or MTH 096 with a C- or better | Credit for MTH 099 (equivalent to MTH 098) and Credit for MTH 104 |
| MTH 060 with MTH 160 | MTH 060: 1 imputed credit MTH 160: 3 credits 5 hours/week | English 101 ready and math placement level 4 or TRS 094 C or better | Credit for TRS 060 and Credit for MTH 160 |
| MTH 104 with MTH 165 (FastTrack) | MTH 104: 4 credits MTH 165: 3 credits 7 hours/week | Math placement level 6 or MTH 098 C or better (same as entry to MTH 104) | Credit for MTH 104 and Credit for MTH 165 |
| MTH 165 with MTH 175 (FastTrack) | MTH 165: 3 credits MTH 175: 4 credits 7 hours/wk | Math placement level 8 or MTH 104 C or better (same as entry to MTH 165) | Credit for MTH 165 and Credit for MTH 175 |

To register for the linked courses, sign up for both courses, with the same section number. For example: TRS-050-103 and MTH-150-103 or MTH-165-301 and MTH-175-301.

Flexible Pace

Accelerating with Flexible Pace TRS 094

TRS 094 is offered in hybrid, remote/reduced (synchronous) and online (asynchronous) modalities.