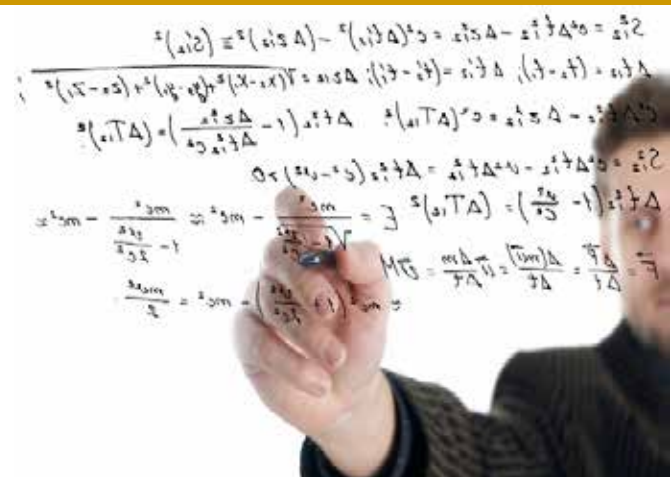


It's your future... Do the Math!



Picture yourself in one of the most rewarding careers you can imagine. **You are needed!**

The best jobs in the fastest-growing fields require advanced mathematical skills.

Health
Technology
Engineering
Science

Mathematics learned today is the foundation for your future.

MCC offers two great mathematics focused options: **Mathematics A.S. Degree**
Mathematics Certificate

Is one of these right for you?

Call the Mathematics Department Office at 585.292.2036 to learn more and to connect with a Math Advisor.



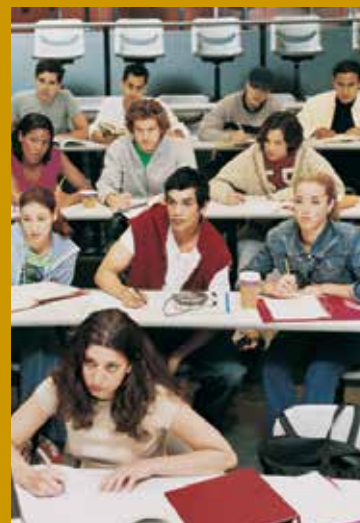
CERTIFICATE

What is a Mathematics Certificate?

A Mathematics Certificate is designed for students who wish to demonstrate a high level of preparation in Mathematics. It is appropriate for any student in any discipline, particularly those who are considering obtaining a four-year degree in a mathematics-based field. Students may earn a Mathematics Certificate as a stand-alone credential.

What are the requirements?

The Mathematics Certificate requires the successful completion of a minimum of 24 credit hours. Significant work in mathematics courses provides the foundation of the certificate. Students must successfully complete Calculus I, II, and III; either Discrete Mathematics or Linear Algebra; and one additional course.



The additional course can be Statistics II, Differential Equations, Discrete Mathematics (if not already taken) or Linear Algebra (if not already taken). College Composition or Advanced Composition, along with one 3-4 credit elective, complete the non-math course requirements.

A.S. DEGREE

What is a Mathematics A.S. Degree?

The degree program is intended for students who are planning to transfer to a four-year college to major in Mathematics, Applied Mathematics, Mathematics Education, Statistics, or a related field. The course work in this program is generally equivalent to the first two years of a typical four-year program in Mathematics. Successful completion of this program will demonstrate preparation for continued study in Mathematics at the junior and senior levels.

What are the requirements?

PROGRAM REQUIREMENTS: 16 Credit Hours
 MTH 210 Calculus I (4 cr.)
 MTH 211 Calculus II (4 cr.)
 MTH 212 Calculus III (4 cr.)
 MTH 230 Linear Algebra** (4 cr.)
 **MTH 230 is only offered in Spring and Summer. Since MTH 212 is the prerequisite for MTH 230, students should plan on taking MTH 230 in their second year, unless MTH 212 has been completed sooner.

PROGRAM ELECTIVE: 3-4 Credit Hours
 MTH 161 Statistics II**** (3 cr.) OR
 MTH 220 Discrete Mathematics*** (3 cr.) OR
 MTH 225 Differential Equations (4 cr.)
 ***MTH 220 (Discrete Mathematics) is strongly recommended for students majoring in Mathematics. Students planning to transfer to a SUNY school should take MTH 220 as their program elective.

SOCIAL SCIENCES: 12 Credit Hours
 Social Science Electives (12 cr.)

HUMANITIES: 9 Credit Hours
 ENG 101 College Composition OR
 ENG 200 Advanced Composition (3 cr.)
 Humanities Elective (3 cr.)
 Literature Elective (3 cr.)

PHYSICAL/HEALTH EDUCATION: 2 Credit Hours
 Physical/Health Education (2 cr.)

NATURAL SCIENCES: 8 Credit Hours
 Natural Sciences Sequence* (4 cr.)
 Natural Sciences Sequence* (4 cr.)
 *Choose one: BIO 155 and 156 or
 CHE 151 and 152 or GEO 101 and 102 or
 PHY 154 and 155 or PHY 161 and 261

LIBERAL ARTS: 3 Credit Hours
 Liberal Arts Elective****(3 cr.)

GENERAL ELECTIVES: 9 Credit Hours
 Electives****(9 cr.)
 ****MTH 160 is the prerequisite for MTH 161. Students choosing MTH 161 as their Mathematics electives must first take MTH 160 as an elective, unless MTH 160 has previously been completed.

Total Credits: 62-63

Notes:
 • Students planning to transfer to a SUNY college or university must also fulfill the SUNY General Education requirements.
 • When choosing electives, consideration should be given to the requirements of the four year institution to which the student plans to transfer.
 • All Mathematics courses and many courses in other disciplines have prerequisites that must be satisfied. When planning their schedules, students should refer to the Course Descriptions section of the Catalog and Student Handbook to view course prerequisites.

Math Added Today... Applied Tomorrow

"This is an exciting opportunity for our students who enjoy studying Mathematics. They can pursue their interests and capitalize on their strengths by proudly completing an A.S. degree in Mathematics or the Mathematics Certificate. Students in any discipline, particularly those majoring in any Mathematics-related field, can demonstrate a strong preparation in Mathematics by completing the certificate, and those who finish the A.S. degree will develop the foundation necessary to continue on as Mathematics majors at four-year colleges and universities."

—Mike Wagner, Assistant Professor,
Monroe Community College

I'm interested. What's my next step?

To enroll in the Mathematics Degree Program or the Mathematics Certificate, please visit one of our advising centers:
**Building 1, Room 231 (Brighton Campus) or
 Room 4139 (Damon Campus)**

Students are encouraged to consult with an advisor in the Mathematics Department.

Call or visit the Mathematics Department to speak to one of our advisors.
Mathematics Department
 Building 8, Office 510
 585.292.2036
www.monroecc.edu/depts/math



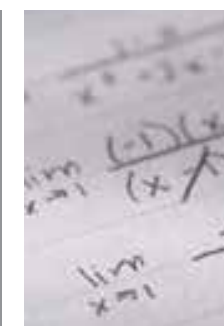
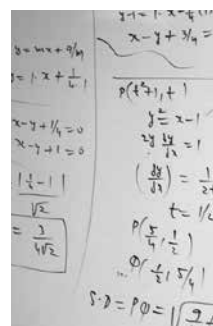
Monroe Community College

STATE UNIVERSITY OF NEW YORK

1000 East Henrietta Road
 Rochester, NY 14623
 585.292.2200

What are the benefits of the certificate and degree

- Facilitate transfer to a mathematics-based four-year degree program
- Enhance students' problem-solving skills
- Increase students' mathematical literacy
- Provide a foundation for junior/senior level mathematics courses and mathematics-based courses (like physics, chemistry, engineering)
- Viewed favorably by four-year institutions



Monroe Community College is committed to fostering a diverse community of outstanding faculty, staff and students, as well as ensuring equal educational opportunity, employment and access to services, programs and activities, without regard to an individual's race, color, national origin, religion, creed, age, disability, sex, gender, identity, sexual orientation, familial status, pregnancy, predisposing genetic characteristics, military status, domestic violence victim status, or criminal conviction. Employees, students, applicants or other members of the College community (including but not limited to vendors, visitors and guests) may not be subjected to harassment that is prohibited by law, or treated adversely or retaliated against based upon a protected characteristic.

Produced by MCC Marketing Communications