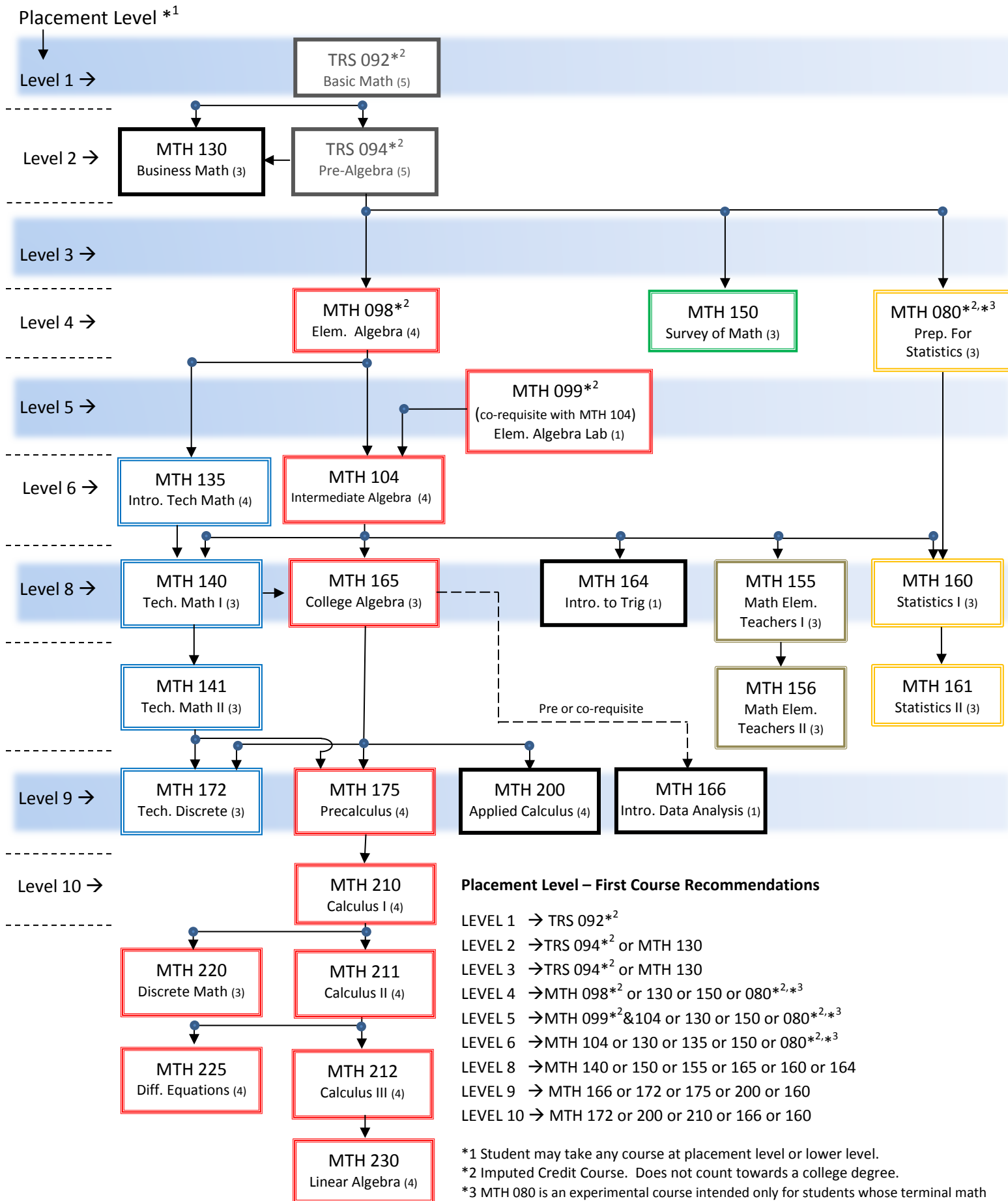


Which MCC Math Course Should I Take? 2014 – 2015 Academic Year



CODE	DEGREE	PROGRAM	MATH REQUIREMENTS	CODE	DEGREE	PROGRAM	MATH REQUIREMENTS			
AC01	AAS	Accounting: General	104/130/up (not 150)		AS	Lib. Arts & Sci. - General (Advisement sequences continued)				
AS01	AS	Addictions Counseling	160/up	LA08		Landscape Arch.	160/200/210 (160 recommended)			
AD01	AS	Advertising: Commercial Art	150/up	LA10		Nutrition	165/up			
HV01	AAS	Air Cond./H/V Tech.	140/(164,165)/175/210/up	LA11		Political Science	160,150/up/NS (161 recommended)			
AI01	AAS	Applied Integrated Tech.	(140,141)/(160,164,165)	LA12		Pre-Chiropractic	210/up			
AT01	AAS	Apprentice – Automotive	135/104/(164,165)/175/up	LA16		Psychology	160, 150/up/NS (161 recommended)			
AT02	Cert	Automotive Technology	135/104/(164,165)/175/up	LH02	AA	Lib. Arts & Sci. - Humanities	150/up SUNY Gen.Ed. (+ NS&M)			
PM03	AAS	Apprentice – Machine Trades	104/up	LH01	AA	Lib. Arts & Sci. -Hum. & Soc. Sci.	150/up SUNY Gen.Ed. (+ NS&M)			
BT01	AAS	Biotechnology	6 credits 160/165/up	LS01	AS	Lib. Arts & Sci. - Science	8 credits 210/up			
BU01	AS	Business Administration	160, 165/up, (161/200/210 recommended)	LS02		Biology	(165,175)/(175,210)/(210,211)			
BI01	AS	Business - International	160, 165/up (200/210 recommended)	LS03		Chemistry	210, 211, (2 of MTH/NS - see audit sheet)			
CN01	AS	Cinema & Screen Studies	150/up	LS04		Env. Sciences	160, (165,175)/(175,210)/(210,211)*			
CL01	AAS	Clinical/Medical Lab. Tech	160, 165/175/up	LS05		Geosciences	210, 211			
CM01	AS	Commun. & Media Studies	150/up	LS06		Physics	210, 211, 212, 225			
MT02	Cert	Computer Aided Design/Drafting	104	LS07		Pre-Forestry	210, 211 (212 for option B)			
CI01	AAS	Computer Inf. Sys.	165/up, 160	LS08		Pre-Pharmacy	14 credits 165/up**			
CI02	AS	Computer Inf. Sys.	160, 165/up	EA01	AA	Lib. A&S: Adolescence Ed.	150/up			
CS01	AS	Computer Science	210, 211, 220, 160/212	EC01/EE01	AA	Lib. A&S: Childhood/Early C.	155, 156			
CP01	AAS	Computer Systems Tech.	3 of: 160/165/172/175/210/211/220	MC02	AS	Mathematics	210, 211, 212, 230,(161/220/225)			
CT01	AAS	Construction Tech.	104/up, 140	MC01	Cert	Mathematics	210,211,212,(161/220/225/230),(220/230)			
CJ01	AS	Criminal Justice	160	MT01	AAS	Mechanical Tech.	(140,141)/(165/up,175/up)			
CJ03	AAS	Crim. Just. - Corr./Police	130/up (160 recommended for transfer)	MU01	AS	Music Performance	150/up			
DH01	AAS	Dental Hygiene	150/up (160 recommended)	NU01	AAS	Nursing	104/up MCC Gen Ed			
DC01	AS	Diversity/Community Studies	160	OF01	AS	Office Tech - Office Admin	104, 150/160/up			
ET01	AAS	E.E. Tech. - Electronics	(140,141,175)/(165,175,210)	OF02	AAS	Office Tech - Office Admin Asst	130/up			
ETX1	Cert	Electronics Technology	140/(164,165)/175/210/up	OF06	Cert	Office Tech - Med Office Asst	130			
EM02	Cert	Emergency Medical Services	150/up	OT01	AAS	Optical Systems Tech.	(140, 141,175)/ (165,175,210/up)			
EN01	AS	Engineering Sci.	210, 211, 212, 225	OT02	Cert	Optical Systems Tech.	140/up (not 150/155/156)			
EP01	AAS	Entrepr./Applied Bus. Studies	104/up (not 130, not 150)	EM01	AAS	Paramedic	150/up			
FA01	AS	Fine Arts	150/up	PE01	AS	Physical Education Studies	160/up			
FR01	AAS	Fire Protect. Tech.	150/up	PM01	AAS	Precision Machining	104/140/141/160/up (+ NS&M)			
HI01	AAS	Health Info. Tech./Med. Rec.	150/up (160 recommended for transfer)	PR01	AS	Public Relations	160/up			
HS01	AS	Health Studies	160/up	RA01	AAS	Radiological Tech.	160/161/165/up			
HV02	Cert	Heating, Venting, A/C	104/135/140/141/165/175/up	BS02	Cert	Small Business Management	130/104 (not 150)			
HM01	AAS	Hospitality Management	104/130/160/165	ST02	Cert	Solar Thermal Technology	135			
HU01	AAS	Human Services	104/up	SM01	AS	Sport Management	160			
HU10	AS	Human Services	160 (+ NS&M)	SC02	AS	Sustain. Studies - Science Track	165/up (+ NS&M - 175 recommended)			
IS01	AS	Individual Studies	150/up	SC02	AS	Sustain. Studies - SS Track	160, 165/up (+ NS&M)			
IT01	AS	Information Technology	172, 160, 161/ENG 251	TA02	Cert	Teaching Asst - Adolescence	2 of 150/up/NS			
ID01	AAS	Interior Design	150/up	TA03	Cert	Teaching Asst - Early/Childhood	155, 156			
LA04	AS	Lib. Arts & Sci. - General	150/up	TA04	Cert	Teaching Asst - Technology	150/up/NS			
HU05		Child Care Practitioners	150/up	TH01	AS	Theatre Arts	150/up			
LA17		History	160, 150/up/NS (161 recommended)	VC01/VC02	AAS	Visual Comm. (both degrees)	3 credits (150 recommended)			
		(Advisement sequences continued in next column)				All information subject to change/correction. Revised 7-15-14				
		Key: NS&M means any 3-4 credit natural sciences or mathematics elective. A comma means "and". A slash means "or". So 160,165/up means MTH 160 and MTH 165 (or higher).								
		* Ordinarily, completion of MTH 211 is expected. ** Completion of MTH 211 is required								