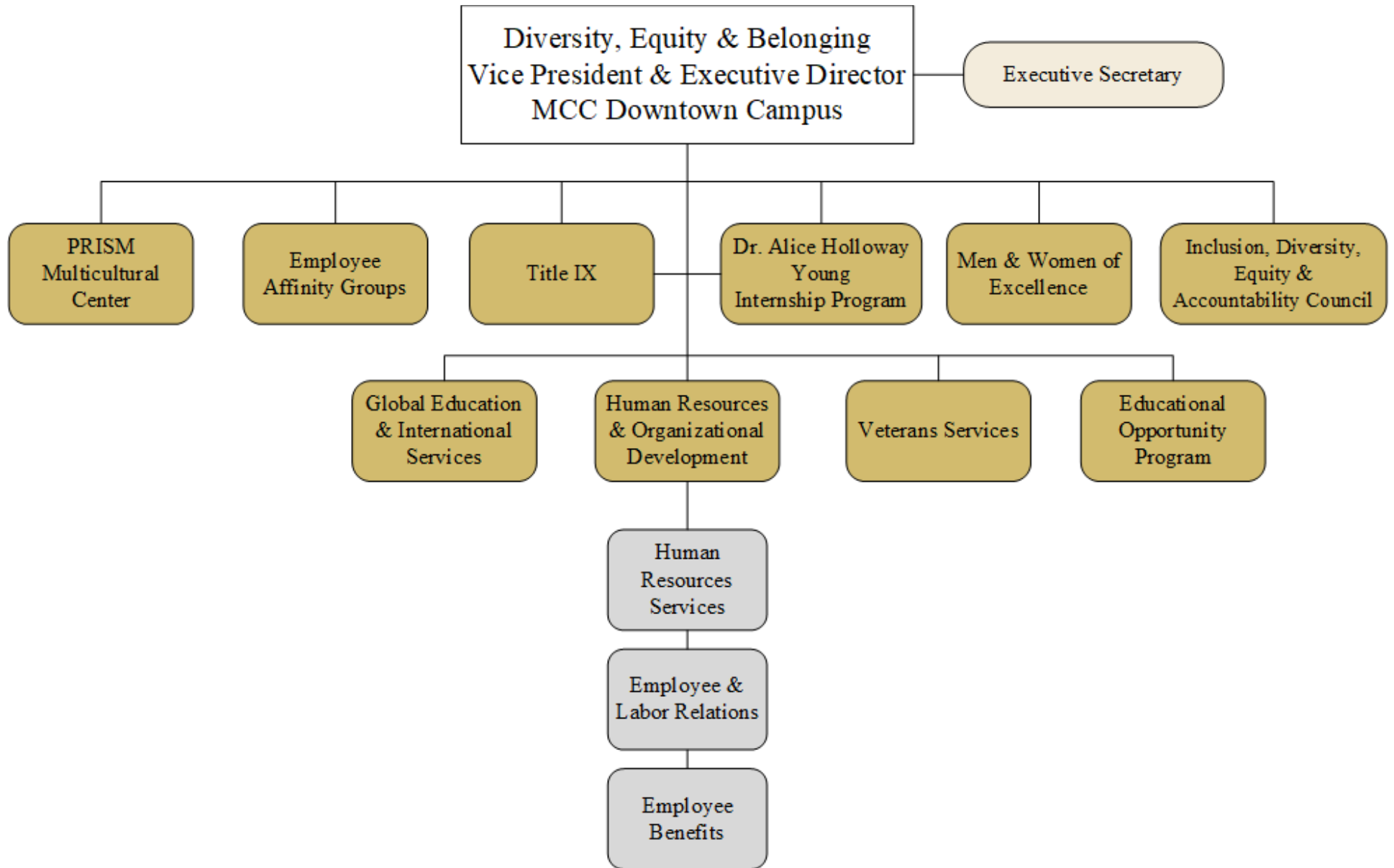
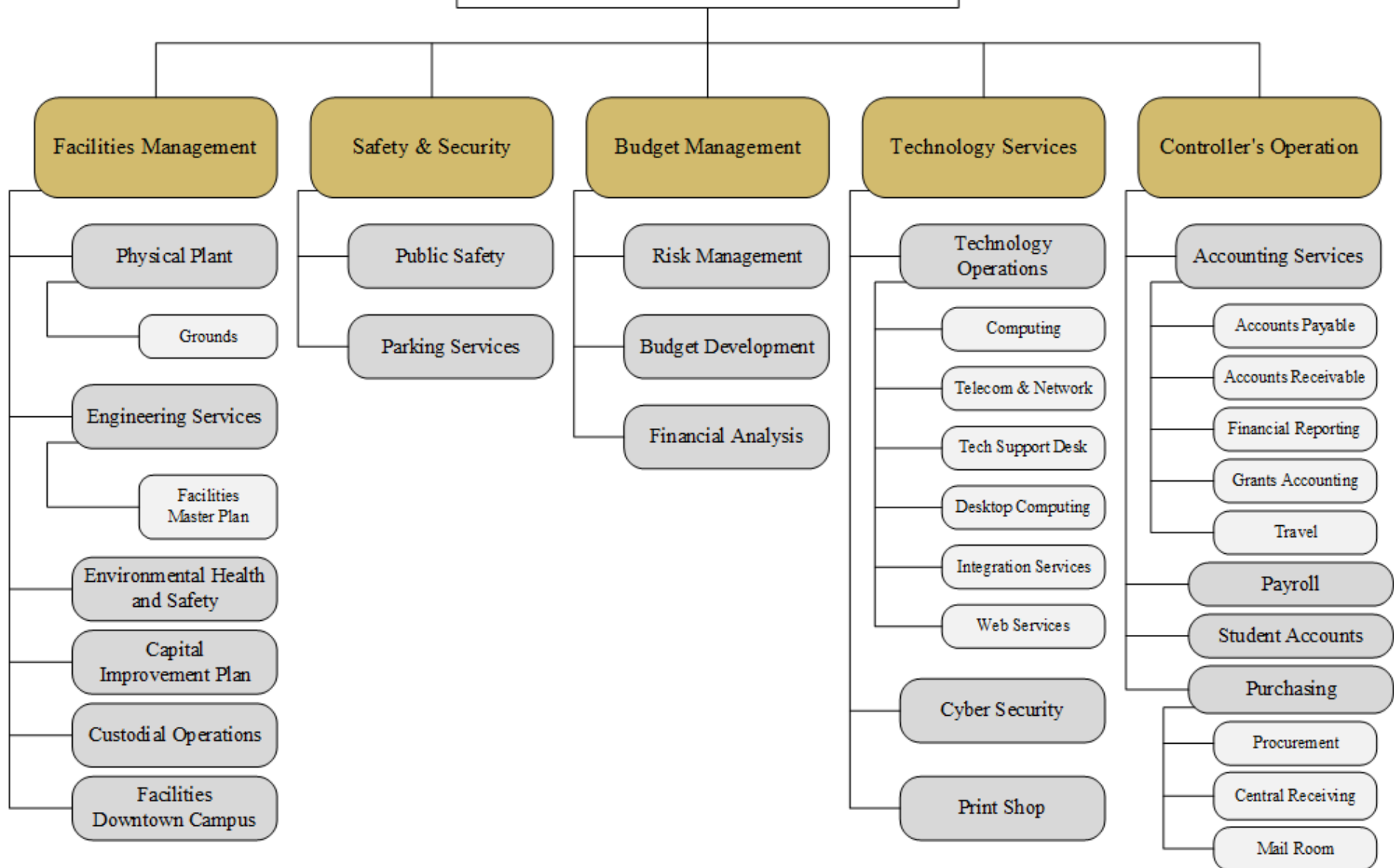


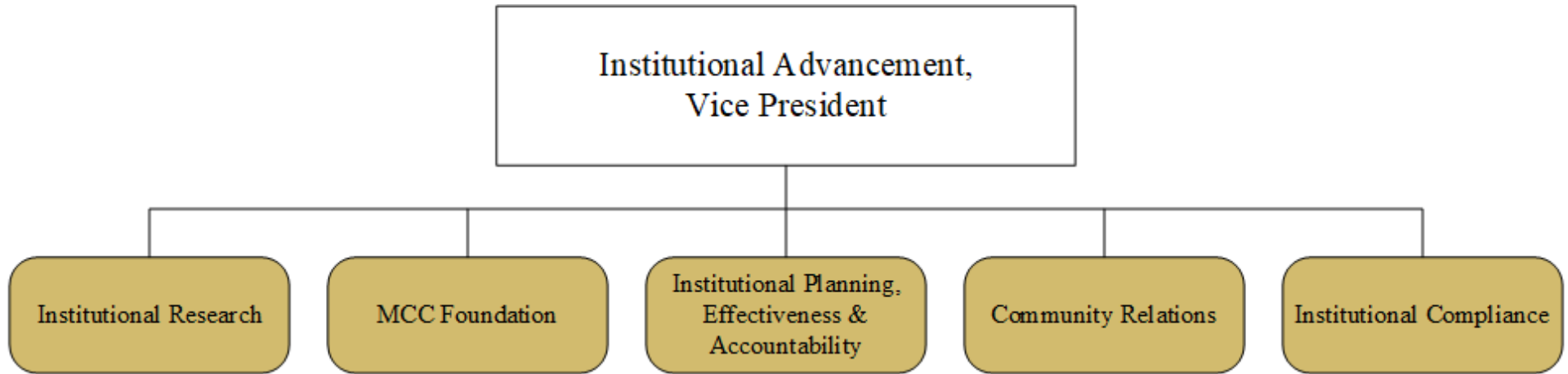
If you have difficulty accessing the charts, a text version is available at the end of the document.  
For further assistance, please [email Chelsea Davis in Human Resources](#) or call (585) 292-2048.

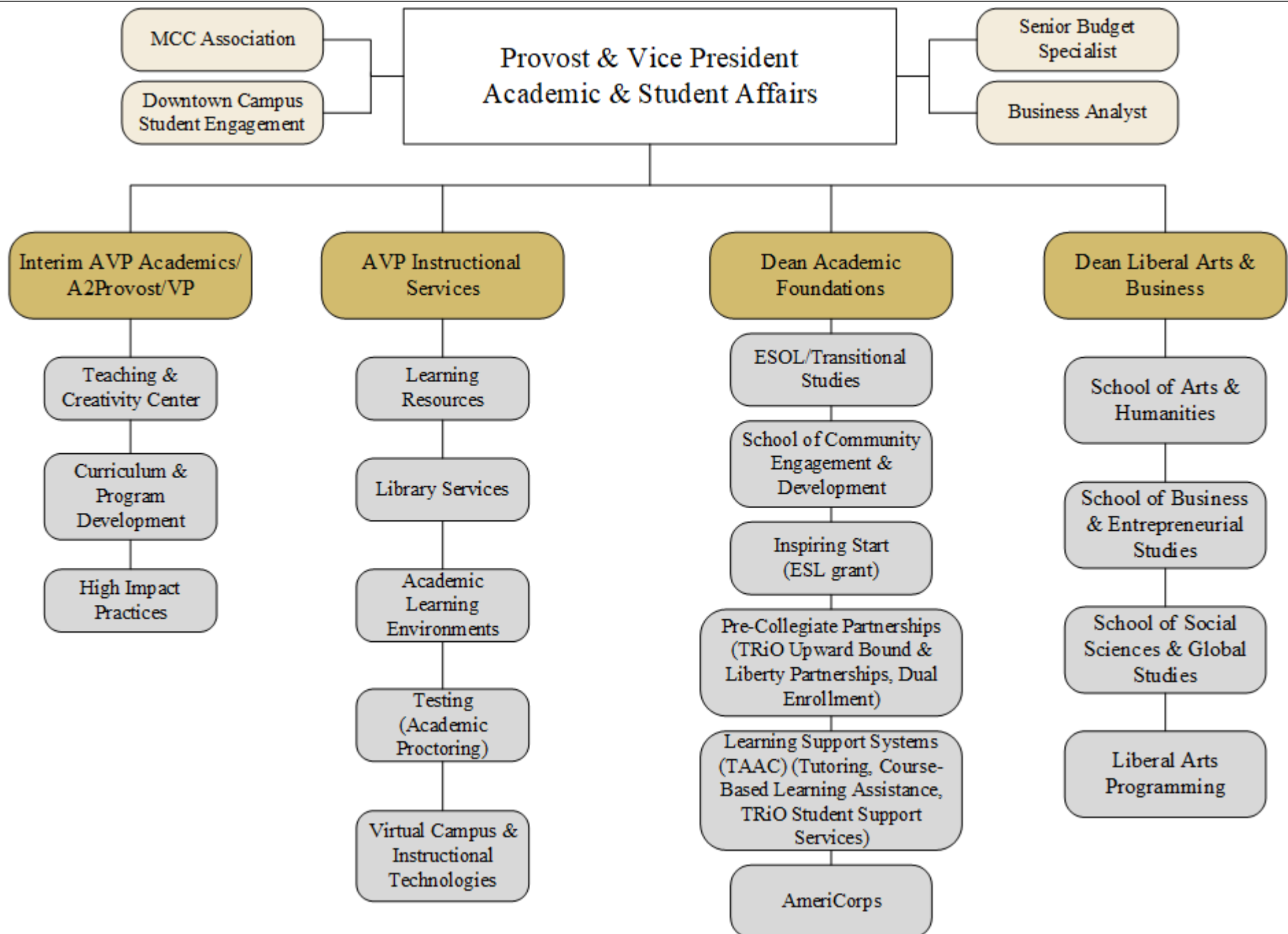


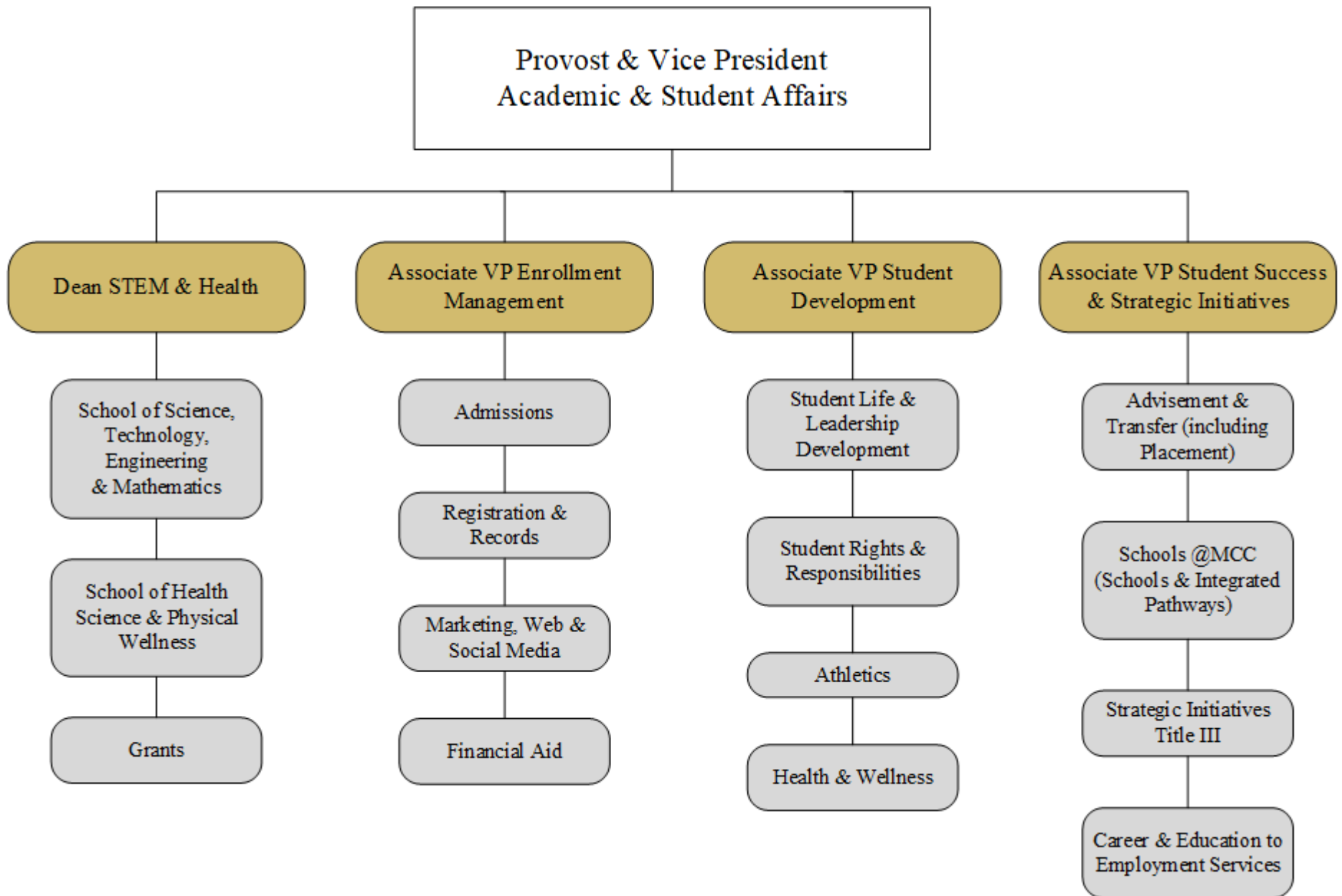


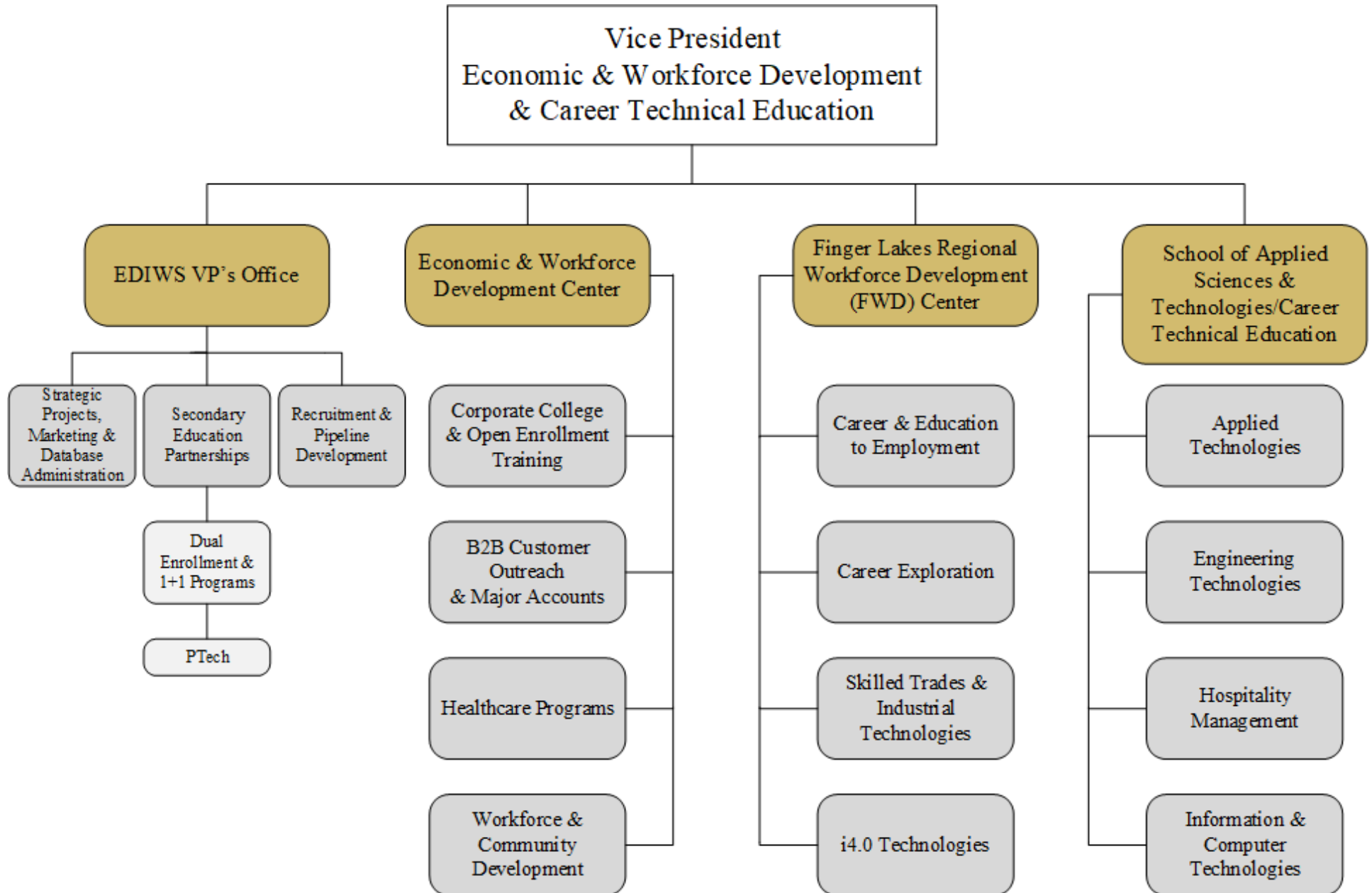
Administrative Services  
Chief Financial Officer / Vice President

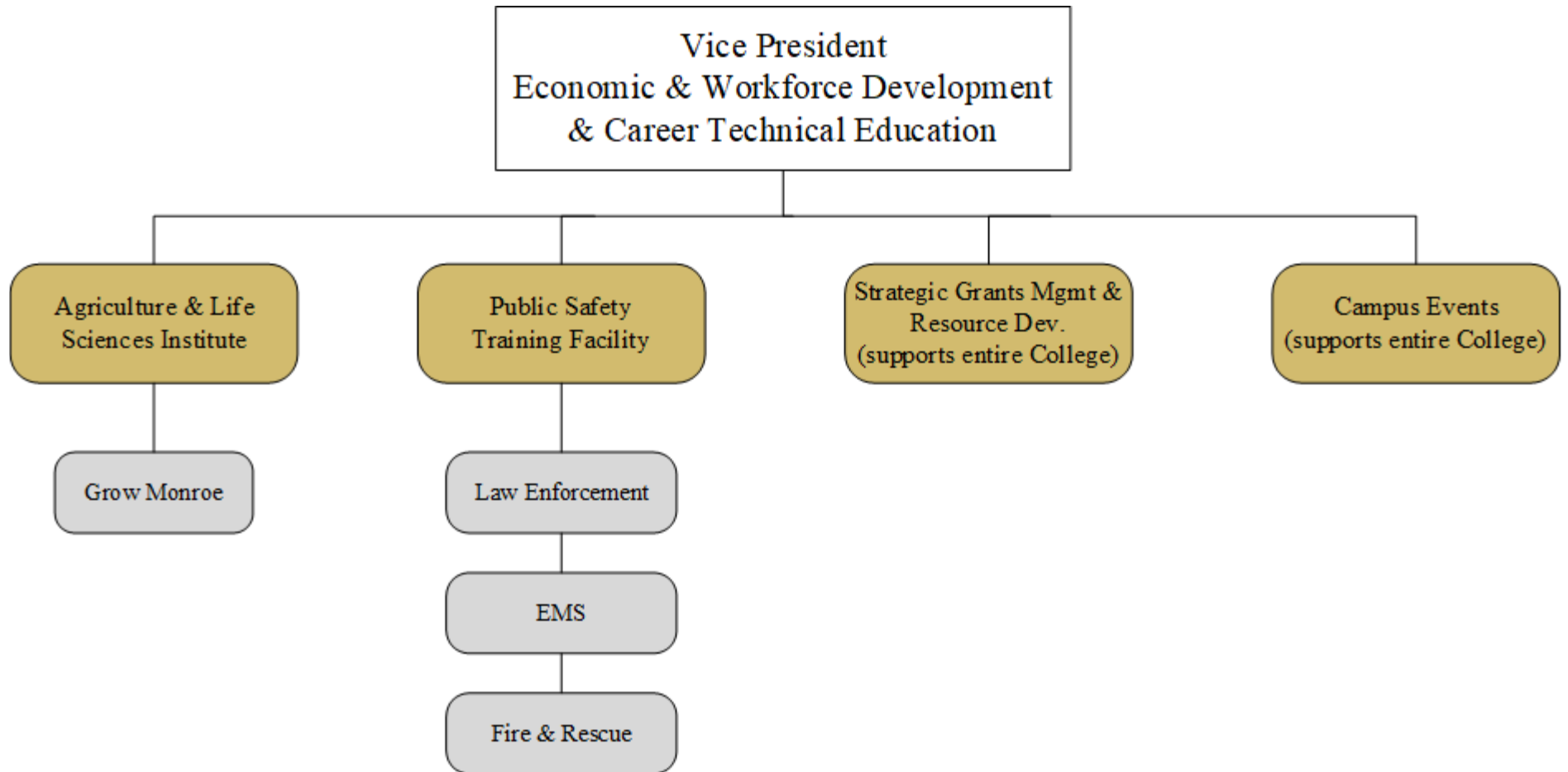














### ***President's Division***

1. Board of Trustees
  - 1.1. President
    - 1.1.1. Vice President Institutional Advancement & Exec Director MCC Foundation
    - 1.1.2. Vice President Diversity, Equity & Belonging & Executive Director Downtown Campus
    - 1.1.3. Chief of Staff
    - 1.1.4. Provost & Vice President, Academic and Student Affairs
    - 1.1.5. Vice President Economic Development, Workforce & Career Technical Education
    - 1.1.6. Chief Financial Officer / Vice President Administrative Services
    - 1.1.7. President's Office
      - 1.1.7.1. Receptionist
      - 1.1.7.2. Executive Secretary to the Board of Trustees
      - 1.1.7.3. Executive Secretary to the President

### ***Diversity, Equity & Belonging Division***

2. Diversity, Equity & Belonging, Vice President & Executive Director MCC Downtown Campus
  - 2.1. PRISM Multicultural Center
  - 2.2. Employee Affinity Groups
  - 2.3. Title IX
  - 2.4. Global Education & International Services
  - 2.5. Human Resources & Organizational Development
    - 2.5.1. Human Resources Services
    - 2.5.2. Employee & Labor Relations
    - 2.5.3. Employee Benefits
  - 2.6. Veterans Services
  - 2.7. Educational Opportunity Program
  - 2.8. Dr. Alice Holloway Young Internship Program
  - 2.9. Men & Women of Excellence
  - 2.10. Inclusion, Diversity, Equity & Accountability Council
  - 2.11. Diversity, Equity & Belonging Office
    - 2.11.1. Executive Secretary

## ***Administrative Services Division***

### 3. Administrative Services, Chief Financial Officer / Vice President

#### 3.1. Facilities Management

##### 3.1.1. Physical Plant

###### 3.1.1.1. Grounds

##### 3.1.2. Engineering Services

###### 3.1.2.1. Facilities Master Plan

##### 3.1.3. Environmental Health and Safety

##### 3.1.4. Capital Improvement Plan

##### 3.1.5. Custodial Operations

##### 3.1.6. Facilities Downtown Campus

#### 3.2. Safety and Security

##### 3.2.1. Public Safety

##### 3.2.2. Parking Services

#### 3.3. Budget Management

##### 3.3.1. Risk Management

##### 3.3.2. Budget Development

##### 3.3.3. Financial Analysis

#### 3.4. Technology Services

##### 3.4.1. Technology Operations

###### 3.4.1.1. Computing

###### 3.4.1.2. Telecom & Network

###### 3.4.1.3. Tech Support Desk

###### 3.4.1.4. Desktop Computing

###### 3.4.1.5. Integration Services

###### 3.4.1.6. Web Services

##### 3.4.2. Cyber Security

##### 3.4.3. Print Shop

#### 3.5. Controller's Operation

##### 3.5.1. Accounting Services

###### 3.5.1.1. Accounts Payable

###### 3.5.1.2. Accounts Receivable

###### 3.5.1.3. Financial Reporting

###### 3.5.1.4. Grants Accounting

- 3.5.1.5. Travel
- 3.5.2. Payroll
- 3.5.3. Student Accounts
- 3.5.4. Purchasing
  - 3.5.4.1. Procurement
  - 3.5.4.2. Central Receiving
  - 3.5.4.3. Mail Room

### ***Institutional Advancement Division***

- 4. Institutional Advancement, Vice President
  - 4.1. Institutional Research
  - 4.2. MCC Foundation
  - 4.3. Institutional Planning, Effectiveness & Accountability
  - 4.4. Community Relations
  - 4.5. Institutional Compliance

### ***Academic & Student Affairs Division***

- 5. Academic & Student Affairs, Provost & Vice President
  - 5.1. Interim AVP Academics / A2Provost / VP
    - 5.1.1. Teaching & Creativity Center
    - 5.1.2. Curriculum & Program Development
    - 5.1.3. High Impact Practices
  - 5.2. AVP, Instructional Services
    - 5.2.1. Learning Resources
    - 5.2.2. Library Services
    - 5.2.3. Academic Learning Environments
    - 5.2.4. Testing (Academic Proctoring)
    - 5.2.5. Virtual Campus & Instructional Technologies
  - 5.3. Dean, Academic Foundations
    - 5.3.1. ESOL / Transitional Studies
    - 5.3.2. School of Community Engagement & Development
    - 5.3.3. Inspiring Start (ESL Grant)
    - 5.3.4. Pre-Collegiate Partnerships (TRiO Upward Bound & Liberty Partnerships, Dual Enrollment)
    - 5.3.5. Learning Support Systems (TAAC) (Tutoring, Course-Based Learning Assistance, TRiO Student Support Services)

- 5.3.6. AmeriCorps
- 5.4. Dean, Liberal Arts & Business
  - 5.4.1. School of Arts & Humanities
  - 5.4.2. School of Business & Entrepreneurial Studies
  - 5.4.3. School of Social Sciences & Global Studies
  - 5.4.4. Liberal Arts Programming
- 5.5. Dean, STEM & Health
  - 5.5.1. School of Science, Technology, Engineering & Mathematics
  - 5.5.2. School of Health Science & Physical Wellness
  - 5.5.3. Grants
- 5.6. AVP, Enrollment Management
  - 5.6.1. Admissions
  - 5.6.2. Registration & Records
  - 5.6.3. Marketing, Web & Social Media
  - 5.6.4. Financial Aid
- 5.7. AVP, Student Development
  - 5.7.1. Student Life & Leadership Development
  - 5.7.2. Student Rights & Responsibilities
  - 5.7.3. Athletics
  - 5.7.4. Health & Wellness
- 5.8. AVP, Student Success & Strategic Initiatives
  - 5.8.1. Advisement & Transfer (including Placement)
  - 5.8.2. Schools @MCC (Schools & Integrated Pathways)
  - 5.8.3. Strategic Initiatives Title III
  - 5.8.4. Career & Education to Employment Services
- 5.9. Academic & Student Affairs Office
  - 5.9.1. MCC Association
  - 5.9.2. Downtown Campus Student Engagement
  - 5.9.3. Senior Budget Specialist
  - 5.9.4. Business Analyst

## ***Economic Workforce Development & Career Technical Education Division***

6. Economic Development, Workforce & Career Technical Education Vice President
  - 6.1. EDIWS VP's Office
    - 6.1.1. Strategic Projects, Marketing & Database Administration
    - 6.1.2. Secondary Education Partnerships
      - 6.1.2.1. Dual Enrollment & 1+1 Programs
      - 6.1.2.2. PTech
    - 6.1.3. Recruitment & Pipeline Development
  - 6.2. Economic & Workforce Development Center
    - 6.2.1. Corporate College & Open Enrollment Training
    - 6.2.2. B2B Customer Outreach & Major Accounts
    - 6.2.3. Healthcare Programs
    - 6.2.4. Workforce & Community Development
  - 6.3. Finger Lakes Regional Workforce Development (FWD) Center
    - 6.3.1. Career & Education to Employment
    - 6.3.2. Career Exploration
    - 6.3.3. Skilled Trades & Industrial Technologies
    - 6.3.4. i4.0 Technologies
  - 6.4. School of Applied Sciences & Technologies / Career Technical Education
    - 6.4.1. Applied Technologies
    - 6.4.2. Engineering Technologies
    - 6.4.3. Hospitality Management
    - 6.4.4. Information & Computer Technologies
  - 6.5. Agriculture & Life Sciences Institute
    - 6.5.1. Grow Monroe
  - 6.6. Public Safety Training Facility
    - 6.6.1. Law Enforcement
    - 6.6.2. EMS
    - 6.6.3. Fire & Rescue
  - 6.7. Strategic Grants Mgmt & Resource Development (supports entire College)
  - 6.8. Campus Events (supports entire College)