

Re-Imagining and Redesigning Student Support within a Guided Pathways Framework

SUNY-wide Keynote Address

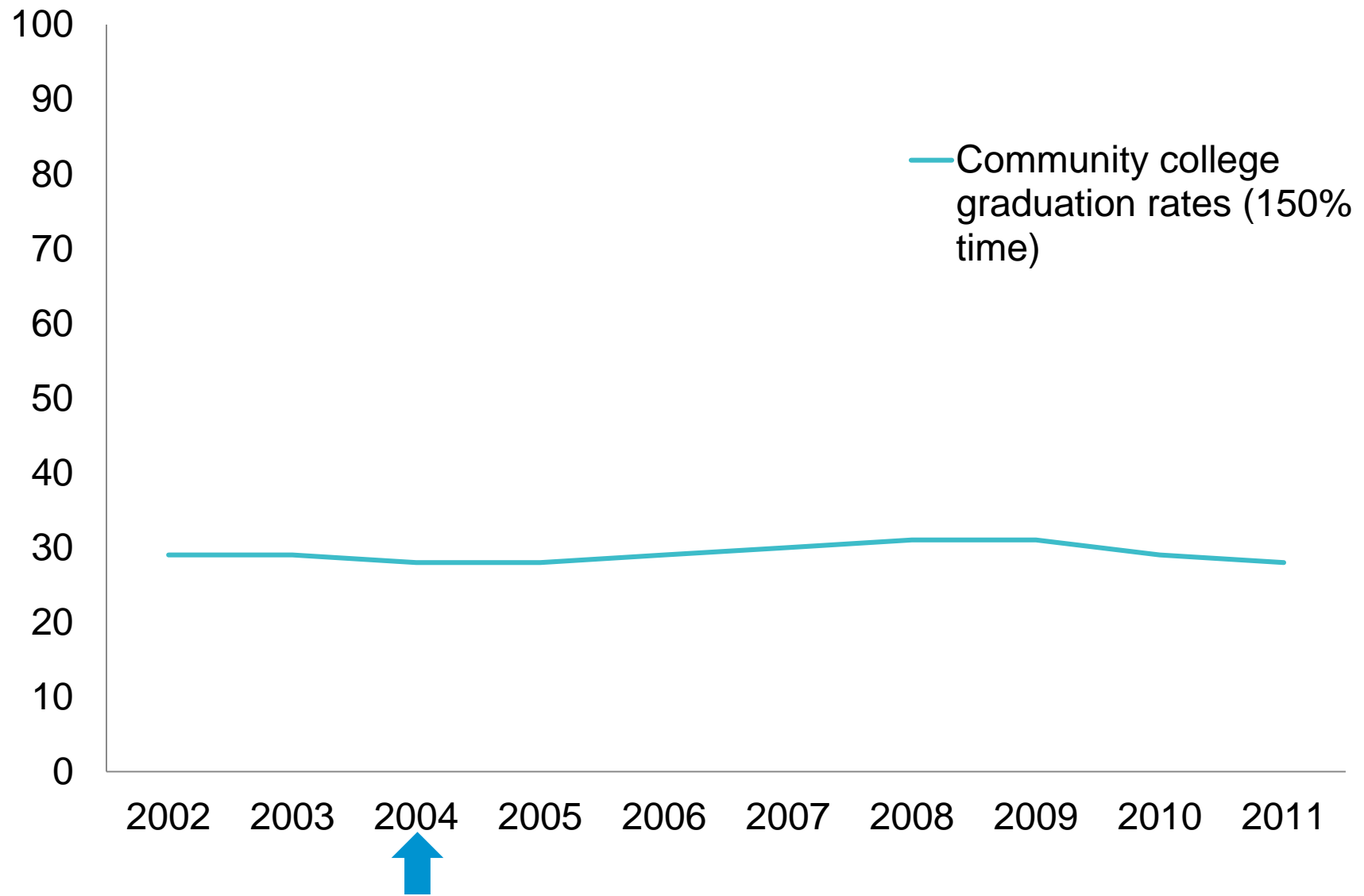
SUNY Guided Pathways Institute

September 24, 2018



Agenda

1. What are guided pathways?
2. Why redesign student support?
3. An alternative to the status quo
4. Redesigning student support with equity in mind
5. Questions, comments, and concerns



Guided Pathways

Redesigning America's Community Colleges (Bailey, Jaggars, & Jenkins, 2015)

Cafeteria College

Paths to career goals unclear



Intake sorts, diverts students



Students' progress not monitored



Learning outcomes not defined and assessed across programs

Guided Pathways College

Clear curricular paths

Help students get
on a path

Keep students on
a path

Ensure students are
learning

CCRC's Guided Pathways Model Practices

- ✓ Organize programs into “meta-majors,” map programs to jobs and further education in high-opportunity fields
- ✓ Help all new students explore career/academic options and develop a full-program plan by end of term 1
- ✓ Schedule classes and monitor progress based on students' plans
- ✓ Embed contextualized active learning into every program
- ✓ Integrate and contextualize academic support into college program gateway courses
- ✓ Build pathways into high schools, starting with dual enrollment

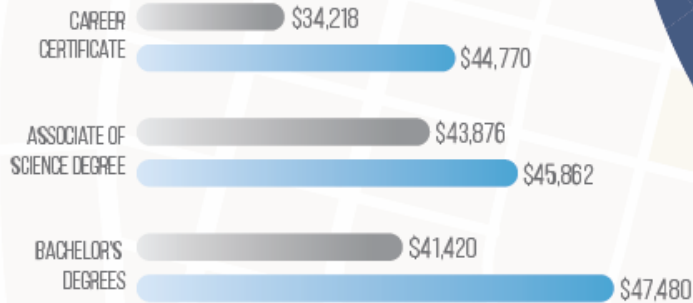
CAREER + ACADEMIC COMMUNITIES

at St. Petersburg College

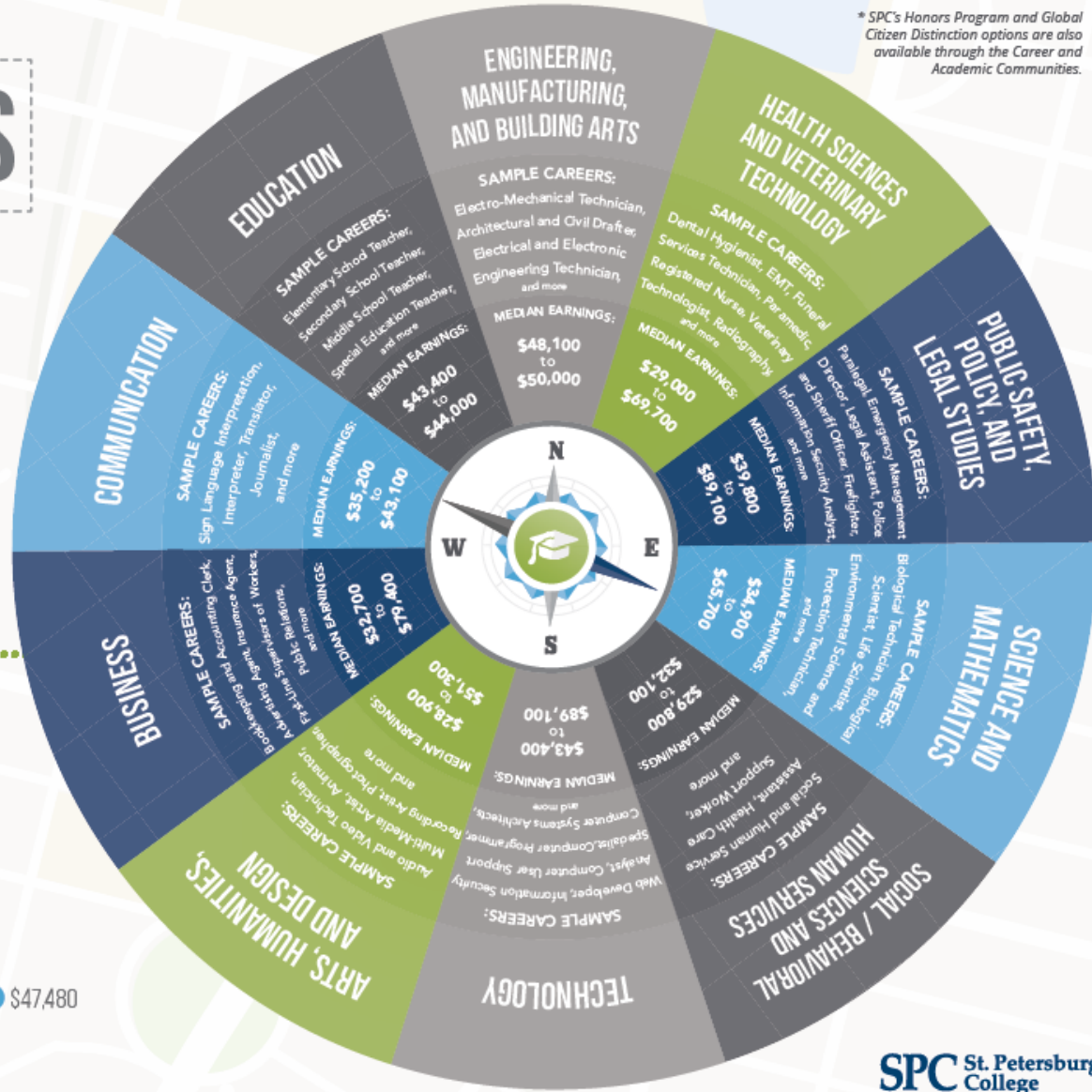
Start your journey today! Choose from one of the ten career and academic communities to see what opportunities await after you graduate. Take the first step now by going to spcollege.edu

CHART YOUR PATH BUILD YOUR FUTURE

MEDIAN FIRST-YEAR EARNINGS (AFTER GRADUATION)



ALL FLORIDA PUBLIC COLLEGES ST. PETERSBURG COLLEGE



* SPC's Honors Program and Global Citizen Distinction options are also available through the Career and Academic Communities.

Elementary Education (K-5)

[Home](#) > [Academics](#) > [Academic Programs](#) > [Programs](#) >

[Request More Information](#) | [Print Map](#)

Transfer Teaching, Elementary Education (K-5) Associate of Science in Teaching

A day in the life

Elementary education requires patience, creativity and a passion for helping students learn. Teachers are on their feet a lot and spend hours outside the classroom preparing lessons. Few professions are as rewarding.

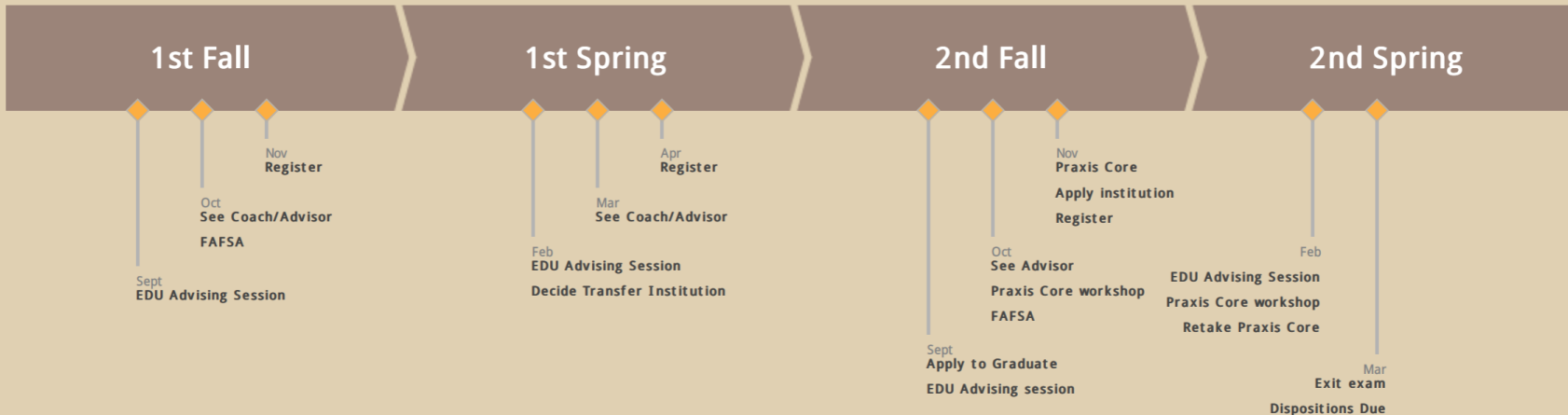
Three reasons to consider this program.

EDU 101 Introduction to Teaching
ENGL 1010 Composition I
MATH 1530 Introductory Statistics
SPCH 1010 Fundamentals of Speech

EDU 111 Intro to Education of Exceptional Childr...
ENGL 1020 Composition II
BIOL 1110 General Biology I
ARTH 1030 Art Appreciation
MATH 1410 Number Concepts/Algebra Structures

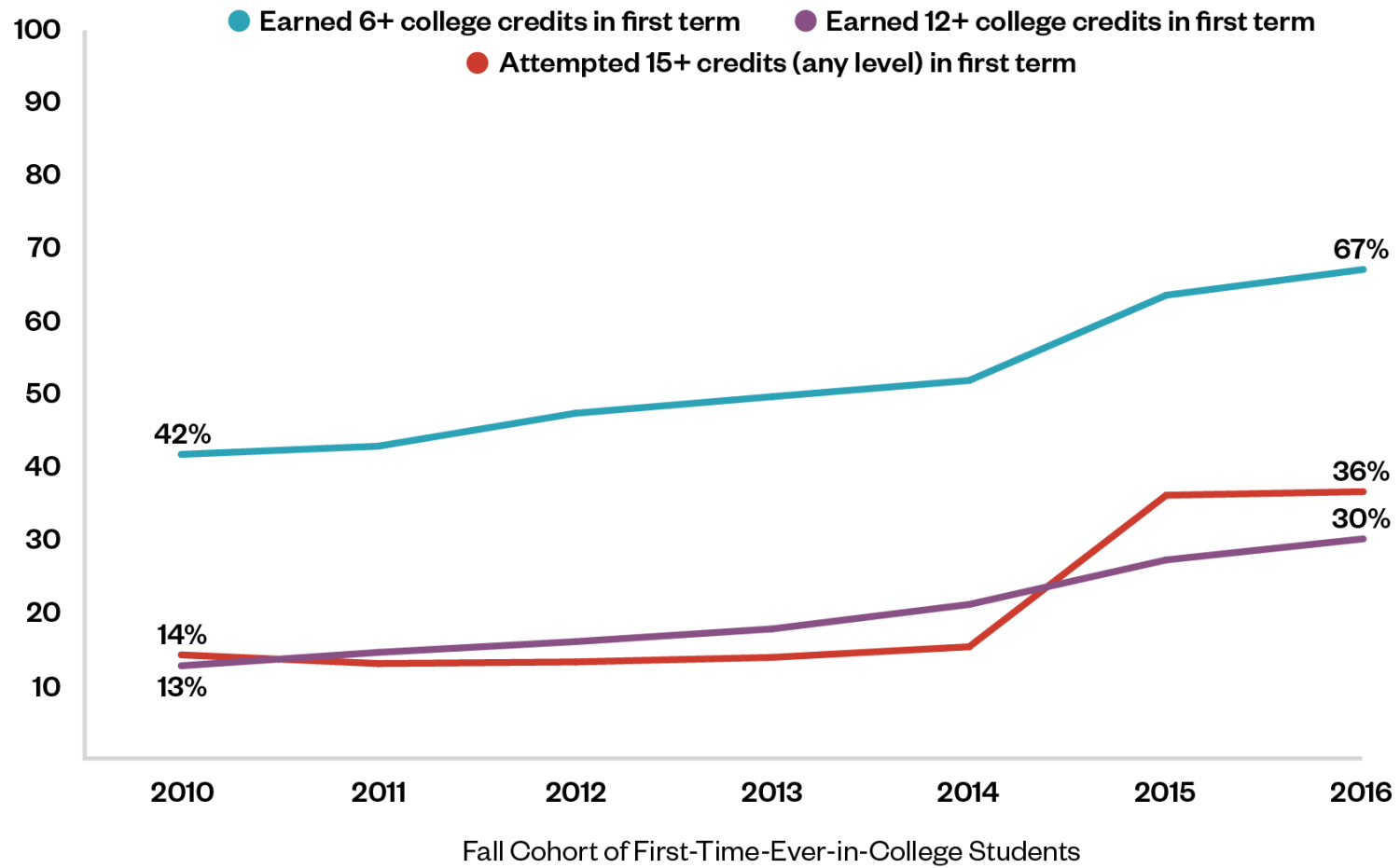
GEOG 2010 World Regional Geography
ENGL 2110 Survey of American Literature I
HIST 2010 Survey of US History I
MATH 1420 Problem Solving Geometry
GEOL 1040 Physical Geology

EDU 211 Educational Psychology
HIST 2020 Survey of US History II
POLS 1030 American Government
MSC 1012 Introduction to Physical Science
Humanities Elective



Key Course: program faculty have identified this course as key to your success
 Recommended Elective: check catalog for other acceptable courses
 This map assumes completion of course prerequisites

TN CCs: First Term Credit Momentum KPIs



Why redesign student support?

Student supports are typically offered cafeteria-style.

The screenshot shows the Community College of Denver website. At the top left is the college's logo. To the right of the logo is a navigation bar with links for Campus Map, CCDConnect, Directory, Foundation, Popular Links, and Translate. Below this is a main navigation menu with the following items: FUTURE STUDENTS, ADMISSIONS & AID, ACADEMICS, CCD LIFE (highlighted), CURRENT STUDENTS, ADMINISTRATION, and ABOUT CCD. A search icon is located on the far right of this menu. Below the main navigation are four columns of content:

- Campus Information**
 - [Auraria Library](#)
 - [Dining Options](#)
 - [Health Center](#)
 - [Parking](#)
 - [Recreation Center](#)
 - [Reflection Room](#)
 - [Tivoli Station \(Bookstore\)](#)
 - [Tivoli Student Union](#)
- Get Involved**
 - [First Year Experience Program](#)
 - [GLBTSS](#)
 - [HSI STEM Sirviendo](#)
 - [Student Government Association](#)
 - [Student Organizations](#)
 - [Student Success Workshops](#)
 - [Urban Male Initiative \(UMI\)](#)
 - [Women Intentional about Success and Excellence \(WISE\)](#)
- Resources**
 - [Care Team](#)
 - [Food Pantry](#)
 - [Student Forms](#)
 - [Student Housing](#)
 - [TRIO Student Support Services](#)
 - [The Phoenix Center at Auraria](#)
 - [Veteran Support Services](#)
- Safety**

Your safety while on campus is important. The video below can help you out in emergency situations.

[WATCH & LEARN](#)



Photo credit: CollegeDegrees360

Many services, few organizing principles

- Services and supports are fragmented.
- Students receive generic support from generalist advisors—or no one.
- It's more efficient to provide information than build students' metacognitive skills.
- Colleges tend to take an “inoculation approach” to providing support.

A research-based alternative: SSIPP



The Promise: Four Mechanisms that Support Student Success

1. Creating social relationships
2. Clarifying aspirations and creating commitment
3. Developing college know-how
4. Making college life feasible

The Strategy: SSIPP

Sustained

Ongoing support rather than an “inoculation” approach.

Strategic

Differentiated services to maximize capacity.

Integrated

Services are an integral part of all students’ experiences, and are not viewed as stand-alone interventions.

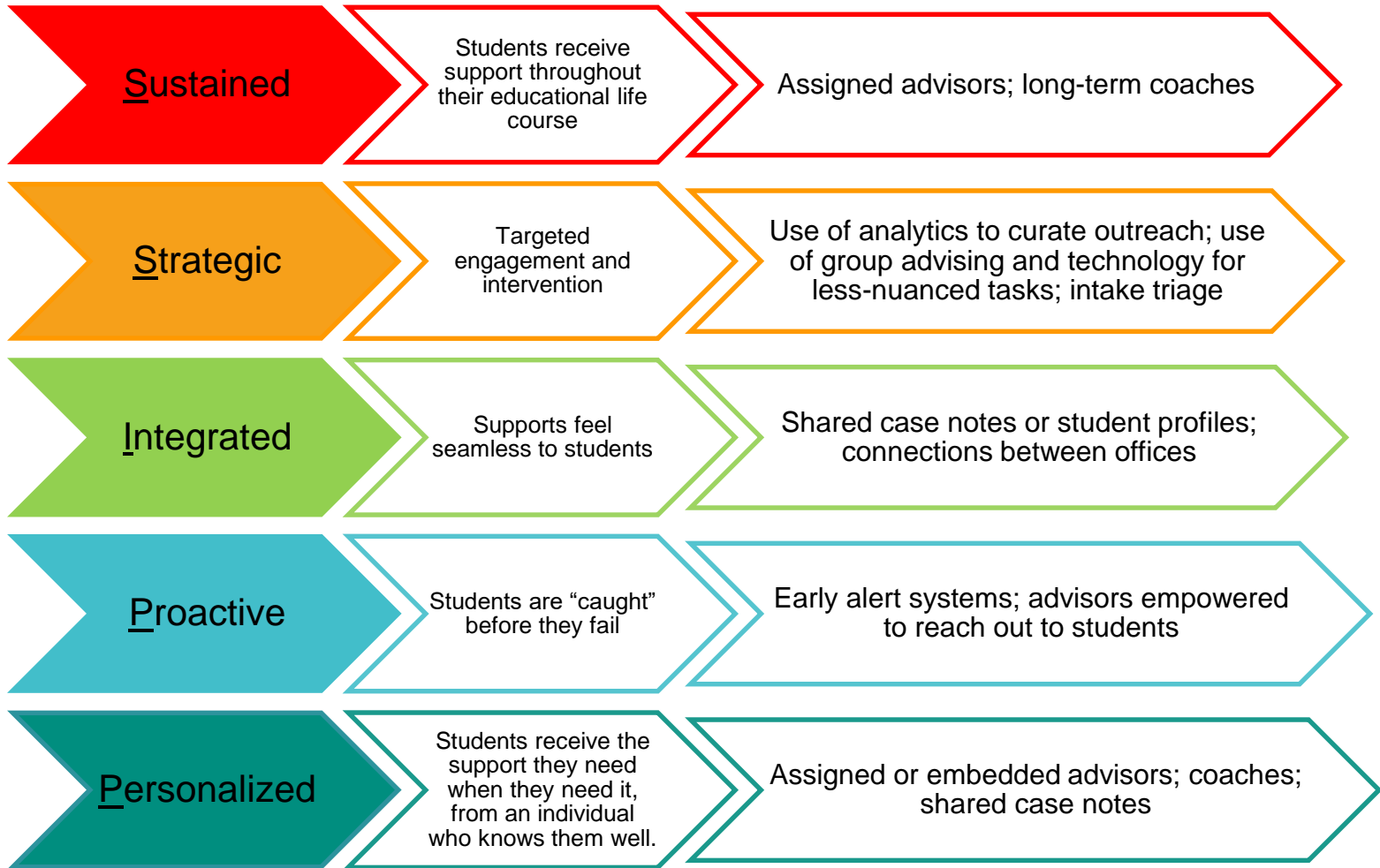
Proactive

Services and information are provided to students before they’re requested.

Personalized

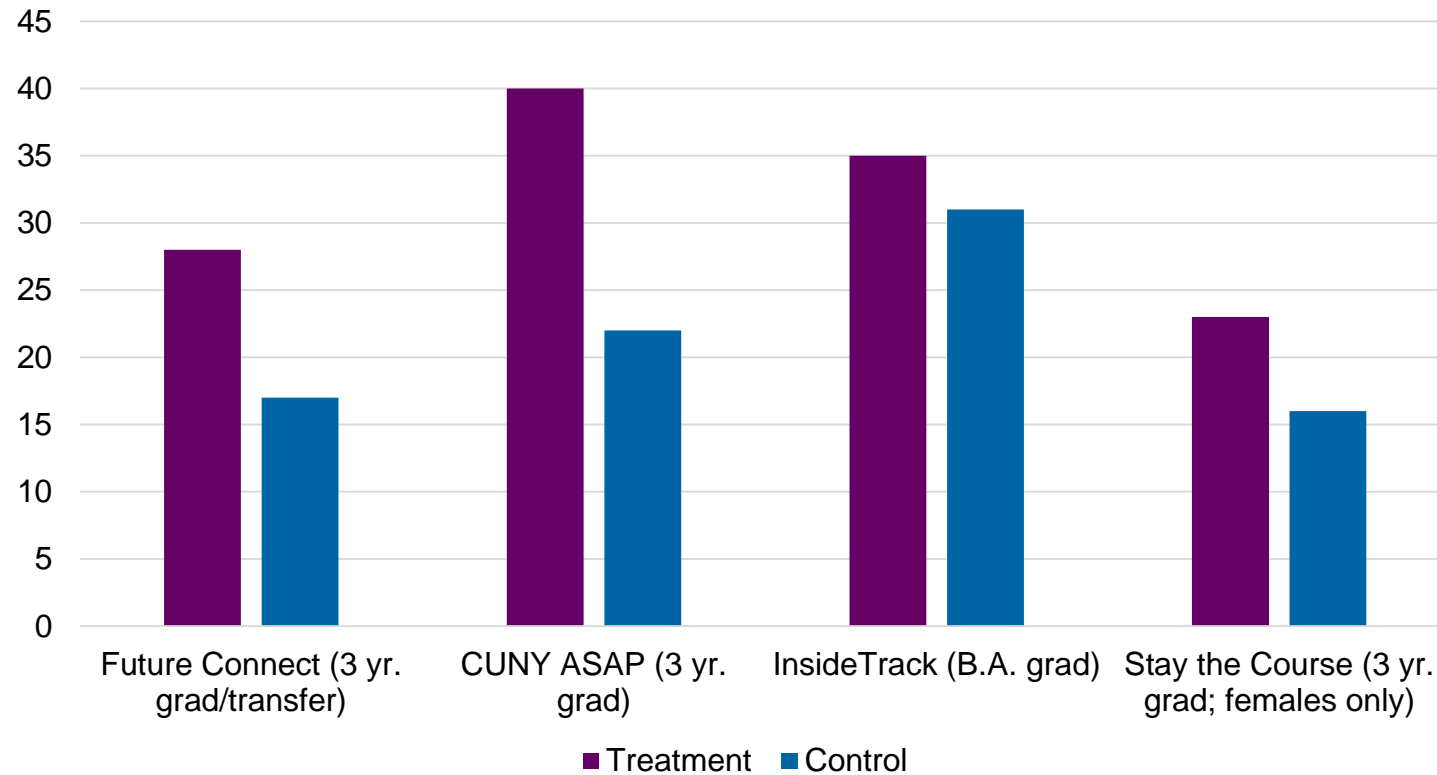
Students receive the support they need when they need it, from an individual who knows them well.

SSIPP as an evidence-informed toolbox

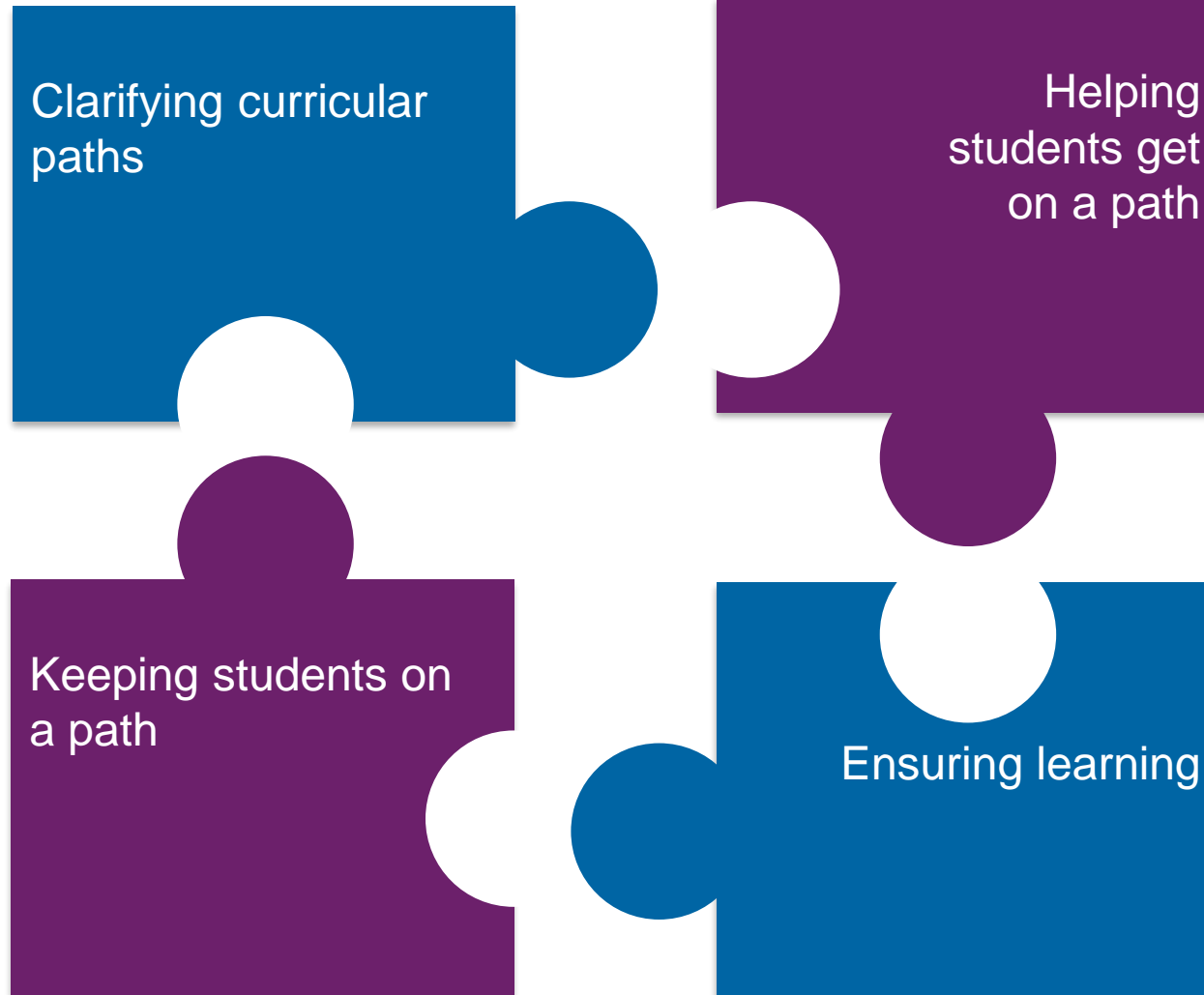


Reorganizing services around SSIPP principles improves completion.

Completion: With comprehensive advising versus business-as-usual



Guided Pathways and Student Services Redesign Go Hand-in-Hand





Guided Pathways provide an architecture for enacting SSIPP-informed student services redesign.

Clarify students' paths: Program maps reduce need for registration focus.

Get students on a path: Create space for faculty-led career planning conversations and long-term program planning.

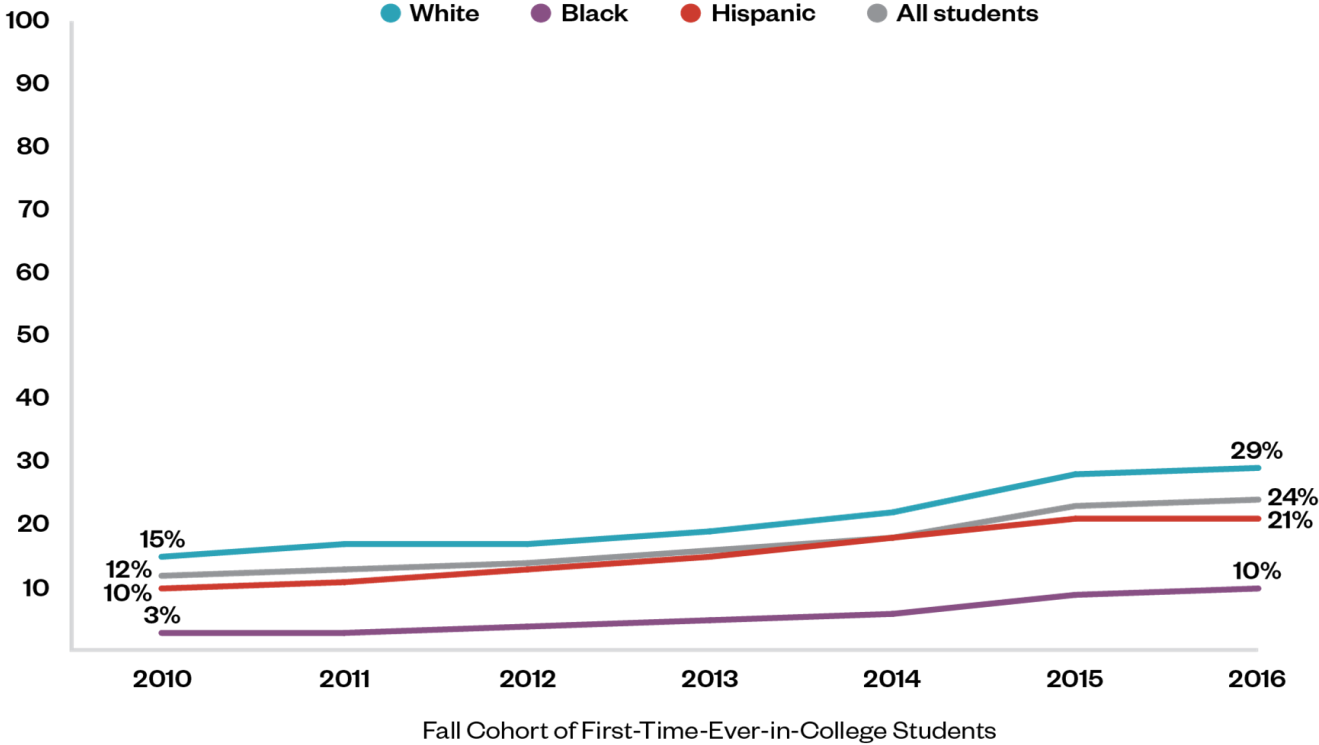
Keep students on a path: Maps and plans allow for risk identification and triage.

Ensure students are learning: Encourage support to focus on student engagement, not procedures.

Redesigning with Equity in Mind

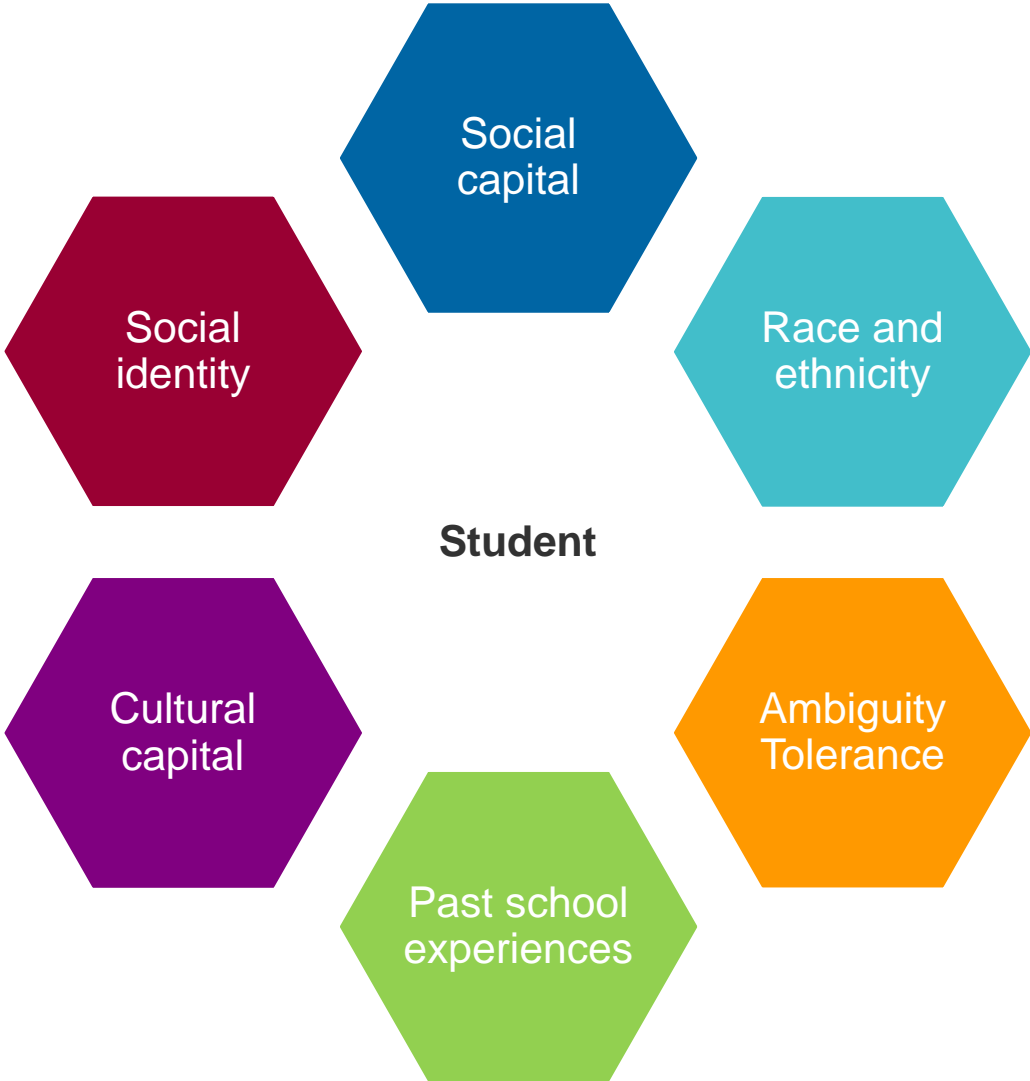
Equity and Equality are different.

TN CCs: Earned 24+ credits in 1st year, by Race



Source: CCRC Analysis of TBR Data

Students do not interact with supports in a vacuum.





SSIPP principles can drive equity-minded strategies.

Sustained

Ongoing support rather than an “inoculation” approach.

Strategic

Differentiated services to maximize capacity.

Integrated

Services are an integral part of all students’ experiences, and are not viewed as stand-alone interventions.

Proactive

Services and information are provided to students before they’re requested.

Personalized

Students receive the support they need when they need it, from an individual who knows them well.

SSIPP principles can drive equity-minded strategies.

Personalized

Students receive the support they need when they need it, from an individual who knows them well.

Questions?

Melinda@phasetwoadvisory.com

 @MelindaKarp