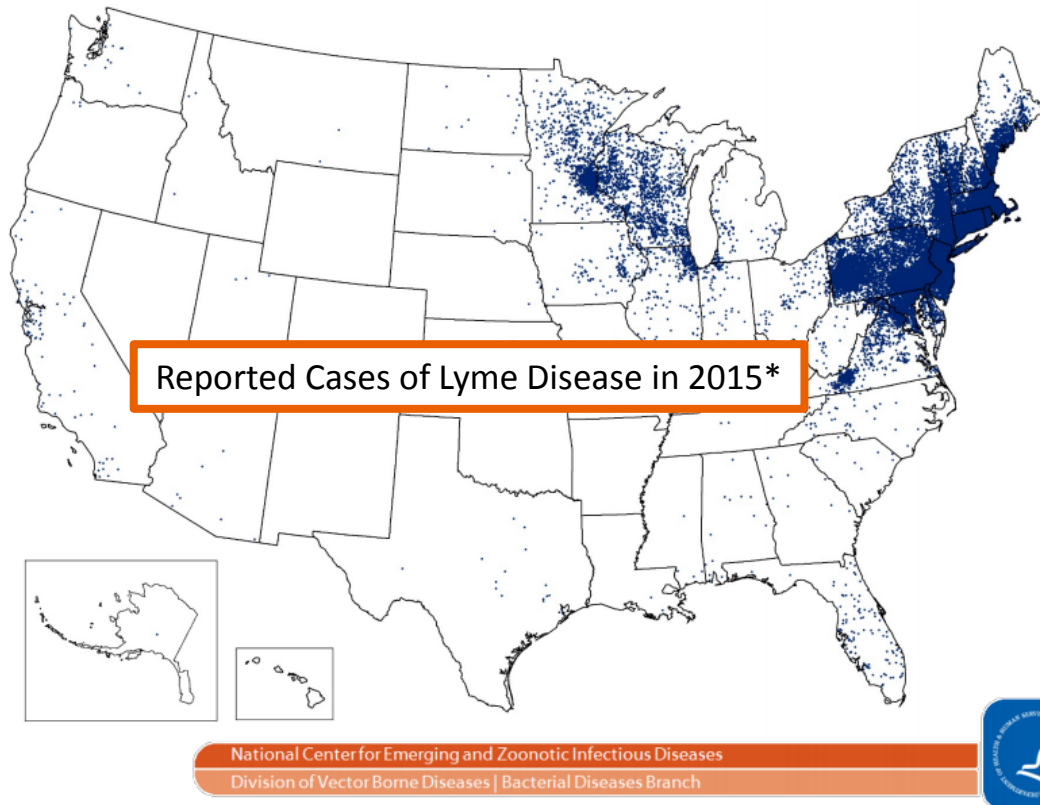


Lyme Light



Join the **MCC Geosciences** and the **Rochester Committee for Scientific Investigation (RCSI)** for a presentation by Erinna Chen (BSN, RN, MS, LAc) focusing on current research and what concerned field workers should know about tick-borne diseases.

Tuesday, April 11th, 7:00 PM in 8-200



* The above map illustrates reported cases of **Lyme Disease** in 2015. Each dot has been placed in the county of residence of the infected individual. (Centers for Disease Control and Prevention www.cdc.gov/lyme)

Erinna Chen (BSN, RN, MS, LAc) discusses her personal family ordeal with Lyme disease (or MSIDS, Multiple Systemic Infectious Disease Syndrome as it is now referred to) and reviews the current status of tick-borne pathogen and parasite research. Perspectives from several different but related fields will be delved into. Ms. Chen has been a nurse for 17 years and received the degree of Master of Science in Acupuncture from the Finger Lakes School of Acupuncture and Oriental Medicine (N Y Chiropractic College). She currently works with patients with "chronic" Lyme disease symptoms and other parasitic-related disorders. She has been involved in a study that required the collection and identification of "Lyme ticks" in Monroe County, and can attest to the significant presence of these organisms in the local region.