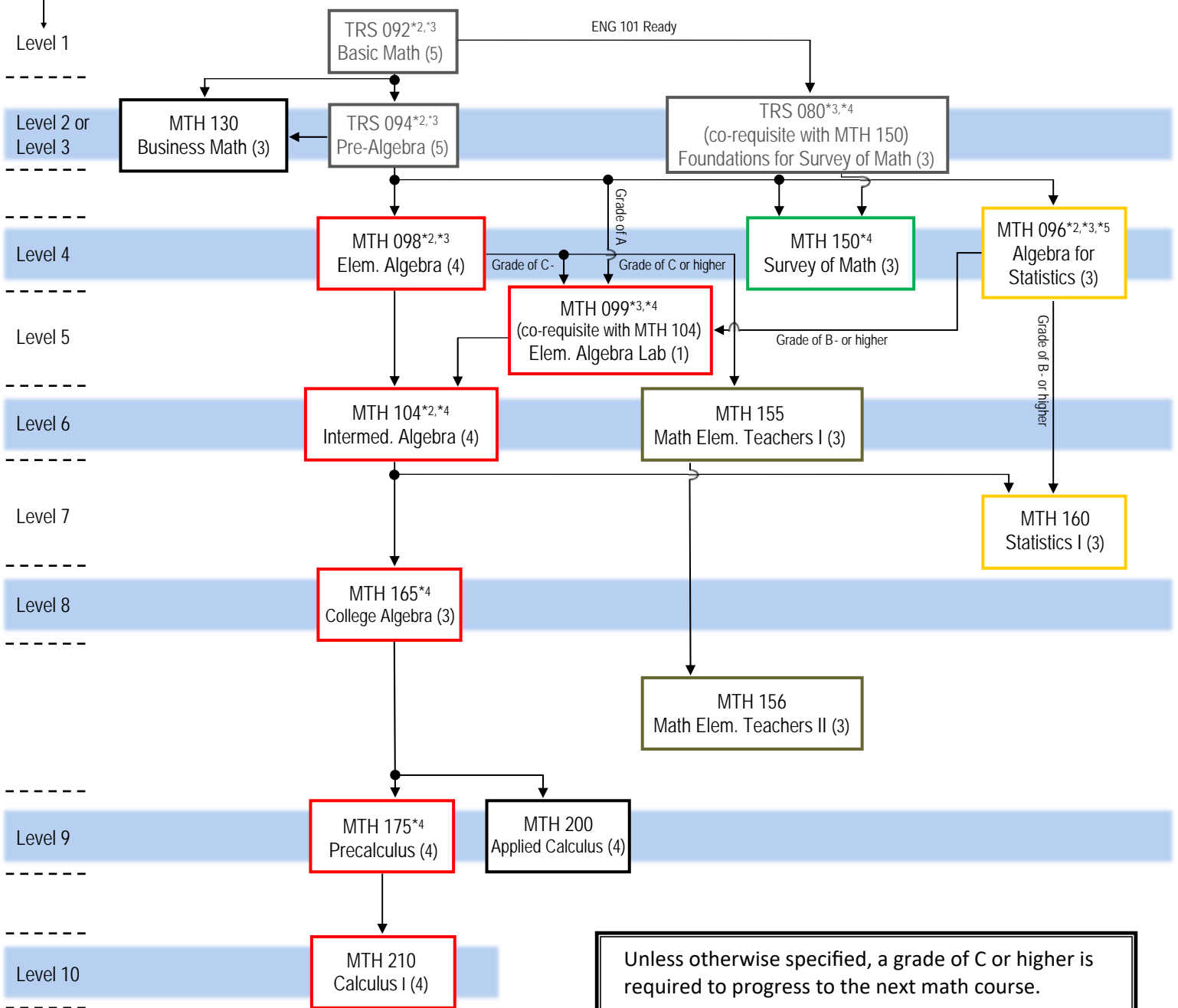


Which MCC Math Course Should I Take? 2018 – 2019 Academic Year

School: Community Engagement and Development

Placement Level *1



Unless otherwise specified, a grade of C or higher is required to progress to the next math course.

- *1 Student may take any course at placement level or lower level.
- *2 Flexible Pace options available.
- *3 Imputed Credit Course. Does not count towards a college degree.
- *4 Available as an accelerated option; refer to the Accelerated Options Table.
- *5 MTH 096 is intended only for students whose terminal math requirement is Statistics.

School: Community Engagement and Development

2018-2019 Academic Year

Math Requirements for Programs

Code	Degree	Program	Math Requirements in Program	Math Requirement for Program Entrance
AS01	AS	Addictions Counseling	160	MTH 096 (formerly MTH 080) with a grade of B- or higher, or MTH 104 with a grade of C or higher, or MCC Level 8 Mathematics Placement
AS02	Cert	Addictions Counseling	None	MCC Level 8 Mathematics placement for students with Associates degree and 4 years experience (no requirement for higher degree)
ASC1	Cert	Advanced Studies	None	550 Math or Verbal SAT
CD01	AAS	Child Care Practitioner	150/up (MCC-QL)	All college placement tests must be completed prior to full admission to the program
CJ01	AS	Criminal Justice	160	Intermediate Algebra with Trigonometry (or MTH 104 at MCC) or MCC level 8 Mathematics placement
CJ02	AAS	Criminal Justice - Institutional Corrections	130/up (MCC-QL) (160 recommended)	Algebra (1 year high school math or placement into Level 4 Math at MCC)
CJ03	AAS	Criminal Justice - Police	130/up (MCC-QL) (160 recommended)	Algebra (1 year high school math or placement into Level 4 Math at MCC)
DD02	Cert	Direct Disability Support Services	None	None
EE02	Cert	Early Care	None	None
HU01	AAS	Human Services	130/150/160	Algebra (1 year high school math or placement into Level 4 Math at MCC)
HU10	AS	Human Services	160	Algebra (1 year high school math or placement into Level 4 Math at MCC)
HU02	Cert	Human Services	None	Elementary Algebra with Geometry (or MTH 098 at MCC)
EA01	AA	Liberal Arts & Sciences - Adolescence Education	150/up	Pre-Algebra or TRS 094 at MCC (Level 3)
EC01	AA	Liberal Arts & Sciences - Childhood Education	155, 156	Intermediate Algebra with Trigonometry or MTH 104 (Level 6)
EE01	AA	Liberal Arts & Sciences - Early Childhood Education	155, 156	Intermediate Algebra with Trigonometry or MTH 104 (Level 6)
LA04	AS	Liberal Arts & Sciences - General Studies	150/up (SUNY-M)	Algebra (1 year high school math or placement into Level 4 Math at MCC)
PL01	Cert	Paralegal Studies	None	None
PV01	Cert	Private Security Studies	None	None
TA02	Cert	Teaching Assistant: Adolescence	2 of 150/up/NS&M	Algebra (1 year high school math or placement into Level 4 Math at MCC)
TA03	Cert	Teaching Assistant: Early Childhood/Childhood	155, 156	Intermediate Algebra with Trigonometry or MTH 104 (Level 6)
TA04	Cert	Teaching Assistant: Technology	150/up/NS&M	Algebra (1 year high school math or placement into Level 4 Math at MCC)

Key: NS&M means any 3-4 credit natural sciences or mathematics elective. A comma means "and". A slash means "or". So 160,165/up means MTH 160 and MTH 165 (or higher).

SUNY-M means that the course selected must be a SUNY General Education Mathematics course.

MCC-QL means that the course selected must be an MCC General Education Quantitative Literacy course.

All information subject to change/correction.

Revised 9-06-18

See the other side for a flow chart of math courses for this school.

Mathematics Accelerated Options

The options outlined here allow a student to complete more than one course in a semester. These are good choices for motivated students with strong study skills.

LEARNING COMMUNITIES				
	Credits	Pre-requisite	Meeting	Successful Result
TRS 080 with MTH 150	TRS: 3 imputed credits MTH: 3 credits	ENG 101 ready and Math placement level 2 or 3 or TRS 092 C or better	Learning Community: 6 hours/wk 2 instructors Brighton Campus	Credit for TRS 080 and Credit for MTH 150
MTH 099 with MTH 104	MTH 099: 1 imputed credit MTH 104: 4 credits	Math placement level 5 or TRS 094 A or MTH 098 C- or MTH 096 B- or better	Learning Community: 6 hours/wk 1 instructor Brighton Campus and online	Credit for MTH 099 (equivalent to MTH 098) and Credit for MTH 104
MTH 104 with MTH 165 (FastTrack)	MTH 104: 4 credits MTH 165: 3 credits	Math placement level 6 or MTH 098 C or better (same as entry to MTH 104)	Learning Community: 7 hours/wk 1 instructor Brighton Campus	Credit for MTH 104 and Credit for MTH 165
MTH 165 with MTH 175 (FastTrack)	MTH 165: 3 credits MTH 175: 4 credits	Math placement level 8 or MTH 104 C or better (same as entry to MTH 165)	Learning Community: 7 hours/wk 1 instructor Brighton Campus	Credit for MTH 165 and Credit for MTH 175
To register for the learning communities, students sign up for both courses, with the same section number. For example: TRS-080-BL1 and MTH-150-BL1 or MTH-165-BL5 and MTH-175-BL5.				

FLEXIBLE PACE	
<p>Accelerating with Flexible Pace TRS 092, 094 and MTH 096, 098, 104</p>	<p>TRS 092, TRS 094, MTH 096, MTH 098 & MTH 104 are offered in the Flex format. In a Flex class, a student who completes the class early can start the next flex course. (It is possible to complete two courses in one semester.) If the student does not complete a flex course, the partial course can carry over to the next semester so they do not have to start over from the beginning. A late start MTH 160 or MTH 165 may be available for a student finishing the prerequisite flex course early in the semester.</p> <p>For example, a student might finish MTH 098 early in the semester and do most of MTH 104 in that same semester. In the second semester, the student could finish MTH 104 in time to take a late start MTH 165 course.</p> <p>Another example is that MTH 096 and MTH 098 share 4 modules of content. A student who has taken MTH 098 can take MTH 096 and the test grades for the 4 common modules are imported into MTH 096 (or vice versa).</p>
<p>To register for a face to face flex pace MTH 098 and MTH 104, students must sign up for both a three-hour lecture section (indicated by an F in the section number) and a one-hour conference section (indicated by an M). For example, a student could sign up for MTH 098 F03 along with MTH 098 M11; or MTH 098 CF3 along with MTH 098 CM8. (MTH 096 does not require a conference section.) MTH 098 and 096 can also be taken concurrently.</p>	