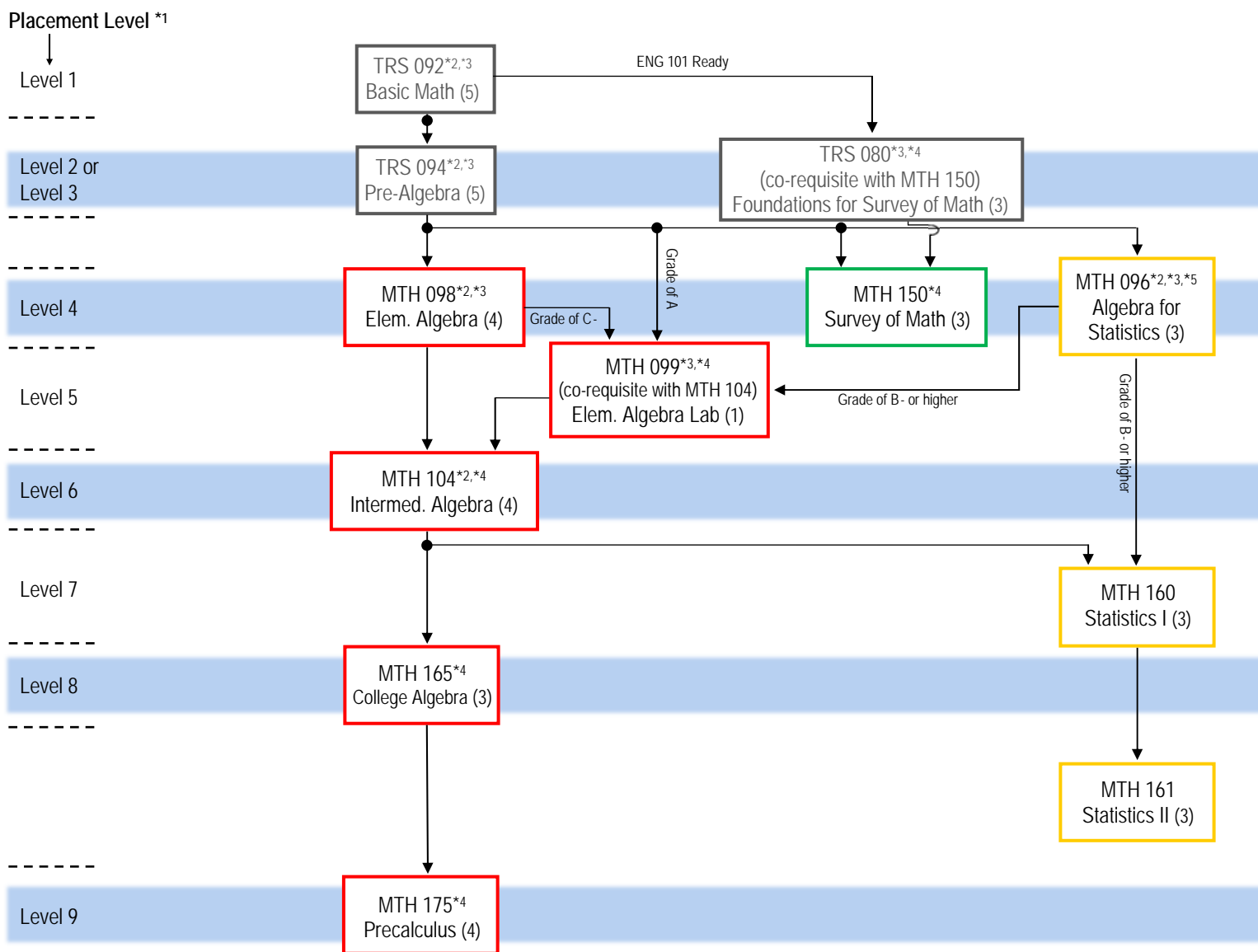


# Which MCC Math Course Should I Take? 2018 – 2019 Academic Year

## School: Health Sciences and Physical Wellness



Unless otherwise specified, a grade of C or higher is required to progress to the next math course.

\*1 Student may take any course at placement level or lower level.

\*2 Flexible Pace options available.

\*3 Imputed Credit Course. Does not count towards a college degree.

\*4 Available as an accelerated option; refer to the Accelerated Options Table.

\*5 MTH 096 is intended only for students whose terminal math requirement is Statistics.

# School: Health Sciences and Physical Wellness

## 2018-2019 Academic Year

### Math Requirements for Programs

Code	Degree	Program	Math Requirements in Program	Math Requirement for Program Entrance
ASC1	Cert	Advanced Studies	None	550 Math or Verbal SAT
CL01	AAS	Clinical Laboratory Technician	160	Intermediate Algebra II with Trigonometry (or MTH 165 at MCC with a grade of C or better).
DA01	Cert	Dental Assisting	None	None
DA03	Cert	Dental Assisting Rapid Track-DART	None	None
DH01	AAS	Dental Hygiene	150/up (160 recommended)	High school algebra or MTH 098 at MCC with a grade of C or better
HI01	AAS	Health Info Tech-Medical Records	150/up (160 recommended)	None
HS01	AS	Health Studies	160	Intermediate Algebra with Trigonometry or MTH 104 at MCC
LA04	AS	Liberal Arts & Sciences – General Studies	150/up (SUNY-M)	Algebra (1 year high school math or placement into Level 4 Math at MCC)
NU01	AAS	Nursing	160	High School: Algebra 2 Trig or Algebra 2 Common Core Algebra Regents exam with a score of 75 or higher OR MCC: MTH 096 (formerly MTH 080) with a grade of B- or better; or any of the following with a grade of C or better: MTH 104, MTH 140, MTH 141, MTH 165 (or higher); or MCC level 8 mathematics placement.
PE02	Cert	Personal Trainer/ Fitness Instructor	160	MCC Level 8 Mathematics placement
PE01	AS	Physical Ed. & Exercise Science	160/up (SUNY-M)	Algebra (1 year high school math or placement into Level 4 Math at MCC)
RA01	AAS	Radiologic Technology	160/161/165/up	High school Algebra 2 with Trigonometry/ Math B with a grade of C or better
SM01	AS	Sport Management	160	Intermediate Algebra with Trigonometry (or MTH 104 at MCC)
SG01	AAS	Surgical Technology	165/up	MCC Level 8 Mathematics placement or MTH 104 with grade C or better. (Recommend HS Algebra II with Trigonometry with grade 75 or higher)
WC01	AS	Wellness Coaching and Health Management	160	MCC Level 8 Mathematics placement

**Key:** A comma means "and". A slash means "or". So 160,165/up means MTH 160 and MTH 165 (or higher).

SUNY-M means that the course selected must be a SUNY General Education Mathematics course.

All information subject to change/correction.

Revised 9-06-18

**See the other side for a flow chart of math courses for this school.**

# Mathematics Accelerated Options

The options outlined here allow a student to complete more than one course in a semester. These are good choices for motivated students with strong study skills.

LEARNING COMMUNITIES				
	Credits	Pre-requisite	Meeting	Successful Result
<b>TRS 080 with MTH 150</b>	TRS: 3 imputed credits MTH: 3 credits	ENG 101 ready and Math placement level 2 or 3 or TRS 092 C or better	Learning Community: 6 hours/wk 2 instructors Brighton Campus	Credit for TRS 080 and Credit for MTH 150
<b>MTH 099 with MTH 104</b>	MTH 099: 1 imputed credit MTH 104: 4 credits	Math placement level 5 or TRS 094 A or MTH 098 C- or MTH 096 B- or better	Learning Community: 6 hours/wk 1 instructor Brighton Campus and online	Credit for MTH 099 (equivalent to MTH 098) and Credit for MTH 104
<b>MTH 104 with MTH 165 (FastTrack)</b>	MTH 104: 4 credits MTH 165: 3 credits	Math placement level 6 or MTH 098 C or better (same as entry to MTH 104)	Learning Community: 7 hours/wk 1 instructor Brighton Campus	Credit for MTH 104 and Credit for MTH 165
<b>MTH 165 with MTH 175 (FastTrack)</b>	MTH 165: 3 credits MTH 175: 4 credits	Math placement level 8 or MTH 104 C or better (same as entry to MTH 165)	Learning Community: 7 hours/wk 1 instructor Brighton Campus	Credit for MTH 165 and Credit for MTH 175
To register for the learning communities, students sign up for both courses, with the same section number. For example: TRS-080-BL1 and MTH-150-BL1 or MTH-165-BL5 and MTH-175-BL5.				

FLEXIBLE PACE	
<b>Accelerating with Flexible Pace TRS 092, 094 and MTH 096, 098, 104</b>	<p>TRS 092, TRS 094, MTH 096, MTH 098 &amp; MTH 104 are offered in the Flex format. In a Flex class, a student who completes the class early can start the next flex course. (It is possible to complete two courses in one semester.) If the student does not complete a flex course, the partial course can carry over to the next semester so they do not have to start over from the beginning. A late start MTH 160 or MTH 165 may be available for a student finishing the prerequisite flex course early in the semester.</p> <p>For example, a student might finish MTH 098 early in the semester and do most of MTH 104 in that same semester. In the second semester, the student could finish MTH 104 in time to take a late start MTH 165 course.</p> <p>Another example is that MTH 096 and MTH 098 share 4 modules of content. A student who has taken MTH 098 can take MTH 096 and the test grades for the 4 common modules are imported into MTH 096 (or vice versa).</p>
To register for a face to face flex pace MTH 098 and MTH 104, students must sign up for both a three-hour lecture section (indicated by an F in the section number) and a one-hour conference section (indicated by an M). For example, a student could sign up for MTH 098 F03 along with MTH 098 M11; or MTH 098 CF3 along with MTH 098 CM8. (MTH 096 does not require a conference section.) MTH 098 and 096 can also be taken concurrently.	