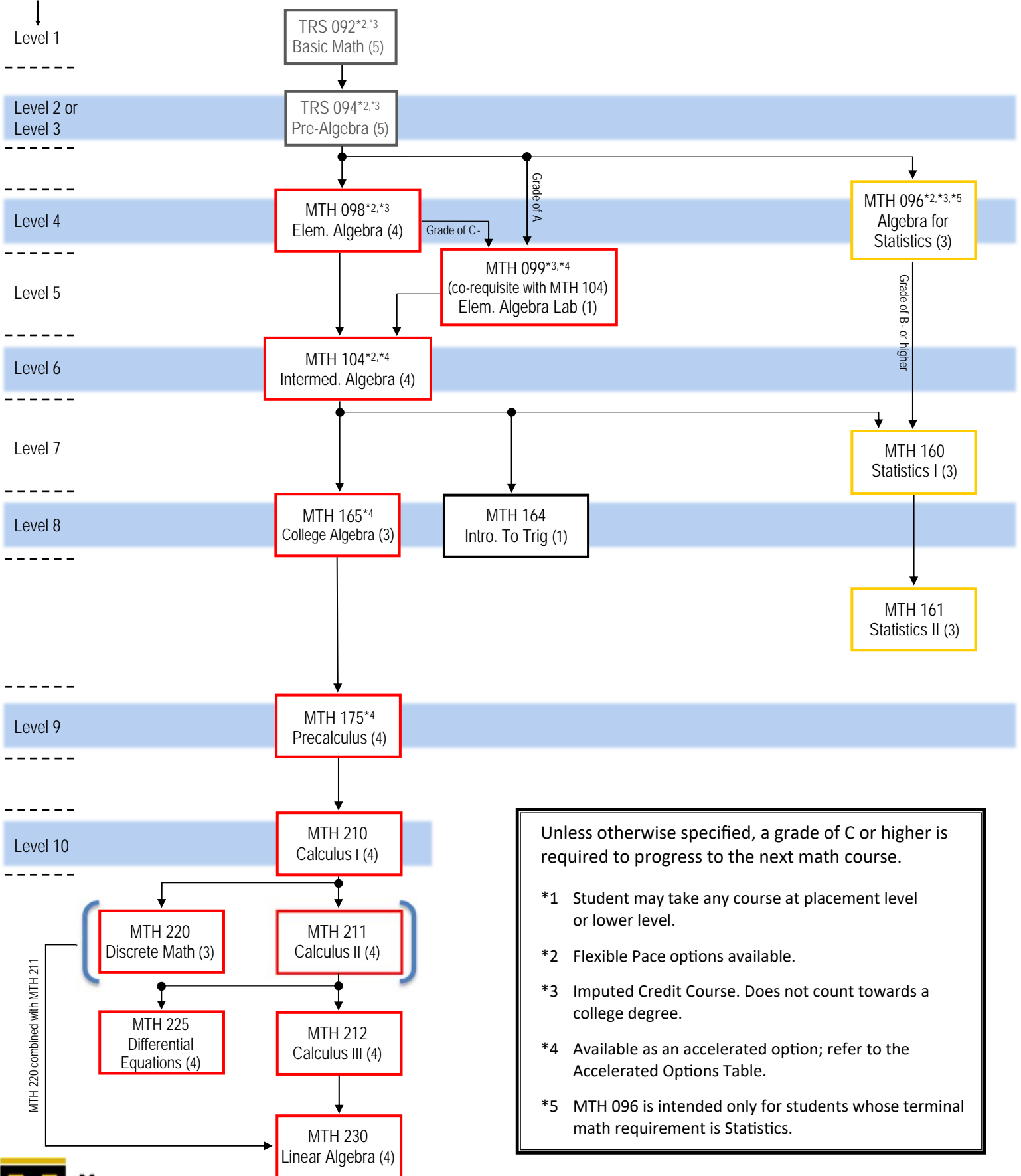


Which MCC Math Course Should I Take? 2018 – 2019 Academic Year

School: Science, Technology, Engineering and Math (STEM)

Placement Level *1



Unless otherwise specified, a grade of C or higher is required to progress to the next math course.

- *1 Student may take any course at placement level or lower level.
- *2 Flexible Pace options available.
- *3 Imputed Credit Course. Does not count towards a college degree.
- *4 Available as an accelerated option; refer to the Accelerated Options Table.
- *5 MTH 096 is intended only for students whose terminal math requirement is Statistics.



School: Science, Technology, Engineering and Math (STEM) 2018-2019 Academic Year - Math Requirements for Programs

Code	Degree	Program	Math Requirements in Program	Math Requirement for Program Entrance
ASC1	Cert	Advanced Studies	None	550 Math or Verbal SAT
AG02	Cert	Agriculture and Food Studies	None	None
LSB1	AS	Biology	175/up	Students who plan to complete this program in 2 years should have a math placement at the Level 9 or MTH 165 at MCC with a grade of "C" or higher or permission of the MCC Biology Dept.
BT01	AAS	Biotechnology	165/up,160/up (MCC-QL) (not 164)	Intermediate Algebra with Trigonometry (or MTH 104 at MCC)
LSC1	AS	Chemistry	210,211	Regents Algebra 2/Trigonometry (exam score \geq 83) OR Level 9 Math at MCC OR MTH 165 (grade of C or better).
EN01	AS	Engineering Science	210,211,212,225	Precalculus in high school with an 85 (or MTH 175 at MCC)
GG01	AS	Geography	160/162/165/up (SUNY-M)	MCC Level 8 Mathematics placement
GS01	AS	Geology	210,(211/160)	Intermediate Algebra (MTH 104 at MCC) or MCC Level 8 Mathematics placement
GG02	Cert	Geospatial Info. Science & Tech.	None	None
LA04	AS	Liberal Arts & Sciences - General Studies	150/up (SUNY-M) (160/165/up recommended)	Algebra (1 year high school math or placement into Level 4 Math at MCC)
LA12	AS	Lib. Arts & Sci. - Gen. Studies - Pre-Chiropractic	210/up	Precalculus in high school with an 83 (or MTH 175 at MCC)
LS01	AS	Liberal Arts & Sciences - Science	8 credits 210/up	At least 3 years of high school mathematics, specifically, algebra, geometry, intermediate algebra, and trigonometry
LS04	AS	Lib. Arts & Sci. - Sci. - Enviro. Sci.	160,(165,175)/(175,210)/(210,211)*	Intermediate Algebra with Trigonometry (or MTH 104 at MCC)
LS05	AS	Lib. Arts & Sci. - Sci. - Geosciences	210,211	Precalculus in high school with an 83 (or MTH 175 at MCC)
LS07	AS	Lib. Arts & Sci. - Sci. - Pre-Forestry	210,211 (212 for option B)	Precalculus in high school with an 83 (or MTH 175 at MCC)
LS08	AS	Lib. Arts & Sci. - Sci. - Pre-Pharmacy	14 credits 165/up**	Intermediate Algebra with Trigonometry (or MTH 104 at MCC)
MC02	AS	Mathematics	210,211,212,220,230	MTH 175 with a grade of C or higher, or high school Precalculus with a grade of B (83) or higher, or MCC Level 10 Mathematics placement
MC01	Cert	Mathematics	210,211,212,(161/220/225/230), (220/230)	MTH 175 with a grade of C or higher, or high school Precalculus with a grade of B (83) or higher, or MCC Level 10 Mathematics placement
PY01	AS	Physics	210,211,212,225,230	HS Precalculus (exam score \geq 83) or Level 10 Math at MCC or MTH 175 (grade of C or better)
SC01	Cert	Sustainability	None	Algebra (1 year high school math or placement into Level 4 Math at MCC)
SC02	AS	Sustainability Studies - Science Track	165/up (SUNY-M)	Level 8 Math or completion of MTH 104 with a C or higher or Algebra II with Trigonometry with a C or higher.
SC02	AS	Sustainability Studies - Sustainability Studies Track	160,165/up (SUNY-M)	Level 8 Math or completion of MTH 104 with a C or higher or Algebra II with Trigonometry with a C or higher.

Key: A comma means "and". A slash means "or". So 160,165/up means MTH 160 and MTH 165 (or higher).
*Ordinarily, completion of MTH 211 is expected. **Completion of MTH 211 is required

SUNY-M means that the course selected must be a SUNY General Education Mathematics course.

MCC-QL means that the course selected must be an MCC General Education Quantitative Literacy course.

All information subject to change/correction.

Revised 9-06-18

See the other side for a flow chart of math courses for this school.

Mathematics Accelerated Options

The options outlined here allow a student to complete more than one course in a semester. These are good choices for motivated students with strong study skills.

LEARNING COMMUNITIES				
	Credits	Pre-requisite	Meeting	Successful Result
TRS 080 with MTH 150	TRS: 3 imputed credits MTH: 3 credits	ENG 101 ready and Math placement level 2 or 3 or TRS 092 C or better	Learning Community: 6 hours/wk 2 instructors Brighton Campus	Credit for TRS 080 and Credit for MTH 150
MTH 099 with MTH 104	MTH 099: 1 imputed credit MTH 104: 4 credits	Math placement level 5 or TRS 094 A or MTH 098 C- or MTH 096 B- or better	Learning Community: 6 hours/wk 1 instructor Brighton Campus and online	Credit for MTH 099 (equivalent to MTH 098) and Credit for MTH 104
MTH 104 with MTH 165 (FastTrack)	MTH 104: 4 credits MTH 165: 3 credits	Math placement level 6 or MTH 098 C or better (same as entry to MTH 104)	Learning Community: 7 hours/wk 1 instructor Brighton Campus	Credit for MTH 104 and Credit for MTH 165
MTH 165 with MTH 175 (FastTrack)	MTH 165: 3 credits MTH 175: 4 credits	Math placement level 8 or MTH 104 C or better (same as entry to MTH 165)	Learning Community: 7 hours/wk 1 instructor Brighton Campus	Credit for MTH 165 and Credit for MTH 175
To register for the learning communities, students sign up for both courses, with the same section number. For example: TRS-080-BL1 and MTH-150-BL1 or MTH-165-BL5 and MTH-175-BL5.				

FLEXIBLE PACE	
Accelerating with Flexible Pace TRS 092, 094 and MTH 096, 098, 104	<p>TRS 092, TRS 094, MTH 096, MTH 098 & MTH 104 are offered in the Flex format. In a Flex class, a student who completes the class early can start the next flex course. (It is possible to complete two courses in one semester.) If the student does not complete a flex course, the partial course can carry over to the next semester so they do not have to start over from the beginning. A late start MTH 160 or MTH 165 may be available for a student finishing the prerequisite flex course early in the semester.</p> <p>For example, a student might finish MTH 098 early in the semester and do most of MTH 104 in that same semester. In the second semester, the student could finish MTH 104 in time to take a late start MTH 165 course.</p> <p>Another example is that MTH 096 and MTH 098 share 4 modules of content. A student who has taken MTH 098 can take MTH 096 and the test grades for the 4 common modules are imported into MTH 096 (or vice versa).</p>
To register for a face to face flex pace MTH 098 and MTH 104, students must sign up for both a three-hour lecture section (indicated by an F in the section number) and a one-hour conference section (indicated by an M). For example, a student could sign up for MTH 098 F03 along with MTH 098 M11; or MTH 098 CF3 along with MTH 098 CM8. (MTH 096 does not require a conference section.) MTH 098 and 096 can also be taken concurrently.	