

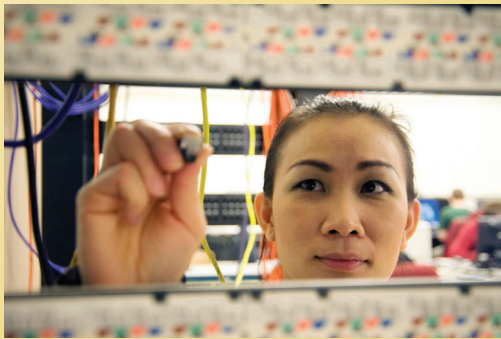


**Monroe Community College**

STATE UNIVERSITY OF NEW YORK

# What Happened to the Class of 2013?

A Comprehensive  
Follow-Up  
Study of MCC  
Graduates



If you have difficulties accessing the “What Happened to the Class of...” reports,  
please contact the Institutional Research Office at (585) 292-3035.

## Table of Contents

<b>Introduction &amp; Highlights</b> .....	i-ii	EMS: Paramedic .....	99-100
2013 Transfer Colleges .....	1	Entrepreneurial & Applied Business Studies.....	101-102
2013 Employers .....	3-6	Fire Protection Technology .....	103-104
<b>Summary: Transfer Curriculum (AS)</b> .....	8	Health Information Technology .....	105-106
Addictions Counseling.....	9-10	Heating, Ventilation, & Air Cond. Tech. ....	107-108
Advertising: Commercial Art.....	11-12	Hospitality Management.....	109-110
Business Administration .....	13-16	Human Services.....	111-112
Cinema & Screen Studies .....	17-18	Interior Design .....	113-114
Communication & Media Arts.....	19-20	Massage Therapy.....	115-116
Computer Information Systems.....	21-22	Mechanical Technology .....	117-118
Computer Science .....	23-24	Nursing .....	119-120
Criminal Justice .....	25-26	Office Technology.....	121-122
Diversity & Community Studies.....	27-28	Optical Systems Technology .....	123-124
Engineering Science .....	29-30	Precision Machining .....	125-126
Fine Arts.....	31-32	Public Administration .....	127-128
Health Studies.....	33-34	Radiologic Technology.....	129-130
Human Services.....	35-36	Visual Commun. Tech: Graphic Design .....	131-132
Individual Studies .....	37-38	Visual Commun. Tech: Photo/TV.....	133-134
Information Technology .....	39-40	<b>Summary: Career Curriculum (Certificate)</b> .....	136
International Business .....	41-42	Addictions Counseling.....	137-138
Liberal Arts & Sciences - General Studies.....	43-51	Automotive Technology.....	139-140
Liberal Arts & Sciences - Science .....	53-54	Court Reporting .....	141-142
Mathematics .....	55-56	Criminal Justice: Corrections Administration.....	143-144
Office Administration & Management .....	57-58	Culinary Arts .....	145-146
Performing Arts - Music .....	59-60	Dental Assisting.....	147-148
Physical Education Studies .....	61-62	Early Care.....	149-150
Public Relations .....	63-64	Electronics Technology .....	151-152
Theatre Arts.....	65-66	Emergency Medical Services .....	153-154
<b>Summary: Transfer Curriculum (AA)</b> .....	68	Food Management.....	155-156
Liberal Arts & Sci. - Adolescence Education.....	69-70	Heating, Ventilation, & Air Conditioning .....	157-158
Liberal Arts & Sci. - Childhood Education .....	71-72	Hotel Management.....	159-160
Liberal Arts & Sci. - Early Care .....	73-74	Human Services.....	161-162
Liberal Arts & Sci. – Humanities & Soc. Sci.....	75-76	Interior Design .....	163-164
<b>Summary: Career Curriculum (AAS)</b> .....	78	Law Enforcement .....	165-166
Accounting: General .....	79-80	Mathematics .....	167-168
Apprentice Training: Automotive .....	81-82	Medical Transcription.....	169-170
Apprentice Training: Machine Trades .....	83-84	Office Technology.....	171-172
Biotechnology .....	85-86	Paralegal Studies .....	173-174
Computer Information Systems.....	87-88	Paramedic .....	175-176
Computer Systems Technology .....	89-90	Precision Machining/Optical Fabrication .....	177-178
Construction Technology.....	91-92	Precision Tooling .....	179-180
Criminal Justice .....	93-94	Small Business Management.....	181-182
Dental Hygiene.....	95-96	Teaching Assistant.....	183-184
Electrical Engineering Technology.....	97-98	Travel & Tourism .....	185-186

## Follow-Up Study of 2013 Graduates

The information in this study is based upon the responses of 1,320 graduates (47% response rate) of the Class of 2013, and data from the National Student Clearinghouse.

### ❖ GRADUATES

2,792 STUDENTS GRADUATED AS THE CLASS OF 2013

- 1,908 (68%) HAD BEEN IN TRANSFER PROGRAMS
- 686 (25%) HAD BEEN IN CAREER PROGRAMS
- 198 (7%) HAD BEEN IN CERTIFICATE PROGRAMS

### ❖ TRANSFER PROGRAM GRADUATES

OF THE 1,908 (A.S./A.A.) GRADUATES:

- 952 (50%) ARE CONTINUING THEIR EDUCATION FULL-TIME
- 172 (9%) ARE EMPLOYED FULL-TIME
- 148 (8%) ARE CONTINUING THEIR EDUCATION OR ARE EMPLOYED PART-TIME
- 16 (1%) ARE CURRENTLY AVAILABLE FOR EMPLOYMENT
- 620 (32%) ARE NOT SEEKING EMPLOYMENT AND HAVE NOT CONTINUED THEIR EDUCATION

### ❖ CAREER PROGRAM GRADUATES

OF THE 686 (A.A.S.) GRADUATES:

- 224 (33%) ARE EMPLOYED FULL-TIME, 203 (30%) IN THEIR MAJOR FIELD
- 84 (12%) ARE CONTINUING THEIR EDUCATION FULL-TIME
- 55 (8%) ARE EMPLOYED OR ARE CONTINUING THEIR EDUCATION PART-TIME
- 21 (3%) ARE CURRENTLY AVAILABLE FOR EMPLOYMENT
- 302 (44%) ARE NOT SEEKING EMPLOYMENT AND HAVE NOT CONTINUED THEIR EDUCATION

### ❖ CAREER PROGRAM GRADUATES - CERTIFICATES

OF THE 198 (CERTIFICATE) GRADUATES:

- 57 (29%) ARE EMPLOYED FULL-TIME, 51 (26%) IN THEIR MAJOR FIELD
- 14 (7%) ARE CONTINUING THEIR EDUCATION FULL-TIME
- 12 (6%) ARE EMPLOYED OR ARE CONTINUING THEIR EDUCATION PART-TIME
- 4 (2%) ARE CURRENTLY AVAILABLE FOR EMPLOYMENT
- 111 (56%) ARE NOT SEEKING EMPLOYMENT AND HAVE NOT CONTINUED THEIR EDUCATION

## ❖ COLLEGE TRANSFER:

- **1,082 (39%)** OF ALL GRADUATES ARE CONTINUING THEIR EDUCATION FULL-TIME
- **1,454 (52%)** OF GRADUATES TRANSFERRED EITHER FULL- OR PART-TIME TO 189 DIFFERENT COLLEGES & UNIVERSITIES
- **1,029 (37%)** OF TRANSFERRING GRADUATES ARE ENROLLED IN LOCAL COLLEGES AND UNIVERSITIES INCLUDING:

SUNY COLLEGE AT BROCKPORT .....	390
ROCHESTER INSTITUTE OF TECHNOLOGY .....	165
ST. JOHN FISHER COLLEGE .....	118
SUNY COLLEGE AT GENESEO .....	61
NAZARETH COLLEGE .....	52
ROBERTS WESLEYAN COLLEGE .....	41
SUNY EMPIRE STATE COLLEGE .....	33
UNIVERSITY OF ROCHESTER .....	30

- ALL SUNY/CUNY COLLEGES COMBINED ACCOUNT FOR **847 (30%)** OF TRANSFERRING GRADUATES
- **1,830 (66%)** OF GRADUATES ARE EITHER STUDYING OR WORKING FULL- OR PART-TIME

## ❖ EMPLOYMENT:

- GRADUATES WERE HIRED BY **567** EMPLOYERS.
- LOCAL EMPLOYERS CONTINUE TO HIRE THE VAST MAJORITY OF OUR GRADUATES. OF THE CAREER AND CERTIFICATE PROGRAM GRADUATES WHO INDICATED CURRENT FULL-TIME EMPLOYMENT, **90%** ARE EMPLOYED IN MONROE COUNTY OR AN ADJACENT COUNTY.
- OF THE CAREER AND CERTIFICATE PROGRAM GRADUATES WHO ARE EMPLOYED FULL-TIME, **90%** ARE IN JOBS RELATED TO THEIR MAJOR AT MONROE COMMUNITY COLLEGE .
- **548 (42%)** OF ALL GRADUATES WHO COMPLETED MCC'S "GRADUATE FOLLOW UP SURVEY" ARE EMPLOYED IN FULL-TIME POSITIONS.
- **983 (74%)** OF ALL GRADUATES WHO COMPLETED MCC'S "GRADUATE FOLLOW UP SURVEY" ARE EMPLOYED EITHER FULL- OR PART-TIME.

### • THE TYPES OF COMPANIES & ORGANIZATIONS THAT MOST FREQUENTLY EMPLOY OUR GRADUATES ARE:

HOSPITALS, HEALTH CARE FACILITIES, & NURSING HOMES .....	222
HOTELS, RESTAURANTS, & FOOD SERVICE ORGANIZATIONS, INCLUDING GROCERY STORES .....	190
HVAC, MANUFACTURING, CONSTRUCTION, & AUTOMOTIVE COMPANIES .....	124
TELECOMMUNICATIONS, BUSINESS, & COMPUTER SERVICES, INCLUDING LAW OFFICES & BANKS .....	118
RETAIL STORES, EXCLUDING GROCERY STORES .....	94
SOCIAL SERVICE AGENCIES, CHILD CARE PROVIDERS, & NON-PROFIT ORGANIZATIONS .....	70
CITY, COUNTY, STATE, & FEDERAL GOVERNMENT OFFICES, INCLUDING THE MILITARY .....	66
EDUCATIONAL INSTITUTIONS (SCHOOLS, COLLEGES, & UNIVERSITIES) .....	55

### • THE LOCAL COMPANIES & ORGANIZATIONS THAT MOST FREQUENTLY HIRE OUR GRADUATES ARE:

ROCHESTER REGIONAL HEALTH SYSTEM .....	70
UNIVERSITY OF ROCHESTER, INCLUDING UR MEDICINE & HIGHLAND HOSPITAL .....	48
WEGMANS .....	43
MONROE COUNTY, INCLUDING MCC .....	35
CITY OF ROCHESTER, INCLUDING POLICE & FIRE DEPARTMENTS & SCHOOL DISTRICT .....	23
HIGHLAND HOSPITAL .....	10

## 2013 TRANSFER COLLEGES

Alfred University  
American University  
Arizona State University  
Ashford University  
Austin Community College  
Baker College - Flint  
Bard College  
Barry University  
Bowling Green State University  
Bryant & Stratton College  
Canisius College  
Cazenovia College  
Chamberlain College of Nursing  
Clarkson University  
Cleveland State University  
Coastal Carolina University  
College for Creative Studies  
College of Saint Rose  
Colorado State University  
Columbus College of Art & Design  
Columbus State Community College  
Concordia University Texas  
Coppin State University  
Cornell University  
CUNY Brooklyn College  
CUNY College of Staten Island  
CUNY Graduate School & University  
CUNY John Jay College of Criminal  
Justice  
CUNY Queens College  
CUNY York College  
Daemen College  
Delaware State University  
Drexel University  
D'Youville College  
Eckerd College  
Edinboro University of Pennsylvania  
Embry-Riddle Aeronautical University  
Everest University  
Excelsior College  
Faith School of Theology  
Fayetteville Technical Comm. Coll.  
Ferris State University  
Finger Lakes Health College of Nursing  
at Geneva General Hospital  
Florida Atlantic University  
Florida Gulf Coast University  
Florida International University  
Franklin University  
Front Range Community College

Geneva General Hospital  
George Mason University  
Grand Canyon University  
Greenfield Community College  
Harding University  
Hilbert College  
Howard Community College  
Howard University  
Illinois State University  
Indiana Wesleyan  
Isabella G. Hart School of Practical Nursing  
Ithaca College  
Johnson & Wales University  
Kaplan University  
Kennesaw State University  
Keuka College  
Le Cordon Bleu College of Culinary Arts  
Le Moyne College  
Long Island University  
Loyola Marymount University  
Maharishi University of Management  
Marist College  
Maryville University  
Massachusetts College of Pharmacy  
Master's International School of Divinity  
Medaille College  
Methodist University  
Monroe #1 BOCES  
Monroe College  
Monroe Community College  
Mount Holyoke College  
Nazareth College  
New York Chiropractic College  
Niagara University  
North Carolina A&T State University  
North Carolina Central University  
North Carolina State University  
Northeastern University  
Northwood Univ. - West Palm Beach  
Ocean County College  
Ohio State University  
Owens Community College  
Paul Smith's College of the Adirondacks  
Penn State University  
Pennsylvania College of Technology  
Pikes Peak Community College  
Polk State College  
Portland Community College  
Post University  
Rasmussen College - Ocala

Roberts Wesleyan College  
Rochester Institute of Technology  
School of Visual Arts  
Seton Hall University  
Southern New Hampshire University  
Springfield College  
St. Bonaventure University  
St. James Mercy Hospital School of  
Radiological Sciences  
St. John Fisher College  
SUNY Alfred  
SUNY Brockport  
SUNY Broome Community College  
SUNY Buffalo State College  
SUNY Cayuga County Community  
SUNY Cobleskill  
SUNY College of Environmental Science  
& Forestry  
SUNY College of Technology at Canton  
SUNY College of Technology at Delhi  
SUNY Corning Community College  
SUNY Cortland  
SUNY Empire State College  
SUNY Erie Community College  
SUNY Fashion Institute of Technology  
SUNY Finger Lakes Community College  
SUNY Fredonia  
SUNY Genesee Community College  
SUNY Genesee  
SUNY Herkimer County Comm. Coll.  
SUNY Institute of Tech. at Utica-Rome  
SUNY Institute of Tech. at Old Westbury  
SUNY Jefferson Community College  
SUNY Mohawk Valley Comm. Coll.  
SUNY Morrisville  
SUNY Oneonta  
SUNY Onondaga Community College  
SUNY Oswego  
SUNY Plattsburgh  
SUNY Potsdam  
SUNY Purchase  
SUNY Tompkins Cortland Comm. Coll.  
SUNY University at Albany  
SUNY University at Binghamton  
SUNY University at Buffalo  
SUNY University at Stony Brook  
Syracuse University  
Texas State University - San Marcos  
Trident Technical College  
University of Arizona



## 2013 TRANSFER COLLEGES

University of Baltimore  
University of Calgary  
University of Central Florida  
University of Chicago  
University of Colorado - Denver  
University of Hartford  
University of Hawaii at Manoa  
University of Houston  
University of Illinois at Chicago  
University of Louisville  
University of Maryland Eastern Shore  
University of Massachusetts Lowell  
University of Miami  
University of New Haven  
University of North Carolina  
University of N. Carolina at Wilmington  
University of North Dakota  
University of North Florida  
University of North Texas  
University of Northern Colorado  
University of Phoenix  
University of Pittsburgh  
University of Rhode Island  
University of Rochester  
University of South Carolina  
University of South Florida  
University of Southern California  
University of Tampa  
University of Tennessee  
University of Texas at Dallas  
University of Utah  
University of Wisconsin - Milwaukee  
Urbana University  
Utica College  
Walden University  
Wayne-Finger Lakes BOCES  
West Chester University  
West Virginia University  
William Rainey Harper College  
Winthrop University  
Worcester Polytechnic Institute

## 2013 EMPLOYERS

A Cut Above Hair Design  
 A Plus Childcare, LLC  
 ABC Head Start  
 Abercrombie & Fitch  
 AccountTemps  
 Acosta Sales & Marketing  
 Adams Technologies  
 ADT Security Services  
 Advanced Heating & Cooling  
 Advantage Metalwork & Finishing  
 Aeropostale  
 Agro-Care  
 ALDO Shoes  
 All Metro Health Care  
 Alleson Athletic  
 AlliedBarton  
 Allstate Tool & Die  
 Alstom Signaling  
 American Pool Supply, Inc.  
 American Rock Salt  
 America's Best Contacts & Eyeglasses  
 AmeriCorps  
 Anthony L. Jordan Health Center  
 AnyPerk  
 Apollo Optical Systems  
 Apple Store, The  
 Applebee's  
 Aramark  
 Arc of Monroe  
 Athar Management Co.  
 Atria Senior Living  
 Auburn Armature, Inc.  
 AutoZone  
 B&L Wholesale Supply  
 Bank of America  
 Barnes & Noble  
 Barrel of Dolls  
 Bartenders Unlimited  
 Batavia Police Department  
 Bates-Rich Beginnings Child Care  
 Bath & Body Works  
 Baywinde Senior Living  
 Benucci's Italian Restaurant  
 Berry Plastics  
 Best Buy  
 Beth Platt & Associates  
 Bill Gray's Restaurant  
 BJ's Wholesale Club  
 Black & Blue Steak & Crab  
 Blossom North Nursing Home

Blossom View Nursing Home  
 Blue Cross Arena  
 Bluffton Township Fire District  
 Boardroom Development Partners  
 Borg & Ide Imaging  
 Bowlmor Lanes  
 Braemar Country Club  
 Brick City Catering  
 Brick House Tavern  
 Brighton Dental Group  
 Brockport Central School District  
 Brookdale Senior Living  
 Browncroft Service Center  
 Buffalo Wild Wings  
 Burgundy Basin Inn  
 Caledonia-Mumford School District  
 Calvary Automation  
 Campus Ambassadors National  
 Canandaigua CrossFit  
 Canandaigua Family YMCA  
 Canandaigua National Bank  
 Cappiello Electric  
 CAR Engineering & Manufacturing, Inc.  
 Cardiac Life Products  
 Caring Hearts of Rochester  
 Casco Security Systems  
 Catering to You  
 Catholic Charities Community Services  
 Cayuga Centers  
 Cayuga Family Dental  
 CCCS of Rochester  
 CEA International  
 Champps Americana  
 Cheesecake Factory, The  
 ChildTime  
 Chili's Restaurant  
 Citizens Bank  
 City of Rochester  
 City of Rochester - Fire Department  
 City of Rochester - Office of the Historian  
 City of Rochester - Police Department  
 City of Rochester - Public Library  
 CJD Enterprises  
 Classic Automation LLC  
 CloudChecker  
 ColorCentric Corporation  
 ComForcare Senior Services  
 Concentrix  
 CooperVision, Inc.  
 Core Staffing

Cornell University  
 Corner Bakery  
 Corning Incorporated  
 Country Sweet Chicken & Ribs  
 Creative Hands  
 Crest Manor Living & Rehabilitation Center  
 Crestwood Children's Center  
 Critics Restaurant  
 Crofton Associates  
 CVS Pharmacy  
 D.B. Roberts Company  
 Dairy Queen  
 Dale Association, The  
 Dansville Dental Professionals  
 Darden Restaurants  
 Darien Lake Amusement Park  
 David C. Schirmer, DDS  
 Davis-Ulmer Sprinkler Co.  
 Dawn Homes Management  
 Deb Shops  
 Del Monte Corporation  
 Delphi Corporation  
 Delta Sonic  
 Dependable Tool & Die Co.  
 DePrez Group of Travel Companies, The  
 DialAmerica  
 Dichotomy Rochester  
 Diffinity Genomics  
 Distillery, The  
 Doan Dodge  
 Dollar General  
 Dorschel Automotive  
 Dorschel Toyota  
 DoubleTree by Hilton  
 Doyle Chevrolet  
 Dr. Graniero Office  
 Dunkin Donuts  
 EarthLink Business  
 East Avenue Dentistry  
 East House Corporation  
 East Side Machine, Inc.  
 Eastman Kodak  
 Edible Arrangements  
 Elder One  
 Elizabeth Wende Breast Care  
 Ellis Hospital  
 Emberwood Fire Grill  
 Empire Precision Plastics  
 Employer Solutions, Inc.

## 2013 EMPLOYERS

Enterprise Rent-A-Car  
Environmental Quality Assurance  
EnviTec Biogas USA  
Epilepsy Foundation  
Epilepsy-Pralid, Inc.  
Episcopal SeniorLife Communities  
Ericsson  
Erie Construction  
ESL  
Exalt Printing Solutions  
Excellus Blue Cross/Blue Shield  
Expert Appliance  
Express  
Fairport Baptist Homes  
Fairport Savings Bank  
Fayetteville Center for Dentistry  
FedEx Ground  
Finger Lakes DDSO  
Finger Lakes Federal Credit Union  
Fireline 520  
First American Equipment Finance  
First Choice Evaluations  
First Student  
Fleet Feet  
Foot Locker  
Forever 21  
Fort, The  
Four Dogs Tavern  
Frank & Louie's Bayou Bar  
Frank 'n Stein & Son, LLC  
Frederico Construction & Demolition  
Fresenius Medical Care  
Friendly Home  
Frontier Communications  
G.H. Bass & Co.  
Gables at Brighton  
GameStop  
Gander Mountain  
Gates Ambulance  
Geek Squad City  
General Electric  
Genesee Brew House  
Genesee Valley Club  
Global Phoenix Computer Technology Solutions, Inc.  
Goodwill of the Finger Lakes  
Greater Rochester International Airport  
Greece Central School District  
Groves & Kelley, DDS  
Guida's Pizzeria & Catering

Hamberger & Weiss  
Hampton Inn  
Harris Corporation  
Heany, Inc.  
Heather Heights of Pittsford  
Hedges Nine Mile Point Restaurant  
Hedonist Artisan Chocolates  
Helpful Technologies, Inc.  
Heritage Christian Services  
Herrema's Market  
Hickey Freeman  
Hickok Center for Brain Injury  
Highland Hospital  
Hill Haven  
Hillside Children's Center  
Hilton Hotels  
Home Depot  
Honeoye Falls Marketplace  
Horizons at Monroe Community College  
Howell Properties  
Hudson Liquor  
Hurlbut, The  
Hyatt Regency  
Ibero-American Action League  
Ideal Chevrolet  
Illinois State University  
INFICON  
Ingleside Machine Company, Inc.  
Inspire! Learning & Childcare  
Integrative Healing Arts Center  
Interim Healthcare  
Investment Company  
Invisible Fence  
Irondequoit Country Club  
Italian Osteria Abruzzi  
ITT  
ITT Gould's Pumps  
J.C. Smith, Inc.  
Jabberwock Reptiles  
Jack n Jill Child Care  
Jacksonville Humane Society  
James Amborski, DDS  
Jeffery Arigo, DDS  
Jewelry & Coin Exchange  
Jewish Community Center  
Jewish Home of Rochester  
Jines Restaurant  
Jitters Cafe  
JK Findings  
JME Automotive

JML Optical  
Jo-Ann Fabric & Craft Stores  
Johnson & Johnson  
Journeys Shoe Store  
Jrlon, Inc.  
Julians Dry Cleaners  
Jump Club  
Kango Play Center  
Kenron Industrial Air Conditioning  
Keystone Builders Supply Company  
Kids First Childcare  
Kinderiffic Park Place Daycare Center  
Kmart  
Knux Tattoo  
Kohl's  
Krony's Pizza  
L-3 Communications  
LA Fitness  
Lake Image Systems  
Lancôme Cosmetics  
Lane Industries  
Latta Road Nursing Home  
Leaf & Bean Coffee Company  
Leary's Cleaners  
Leo's Bakery  
Lessing's  
Liberty Mutual  
Liberty Pumps  
Liberty Resources  
Life's Capturing Moment  
Lifetime Assistance  
Lifetime Health Medical Group  
Litelab Corporation  
Lodge at Woodcliff, The  
Lombard Cecil Insurance Agency  
Lord & Taylor  
Lowe's Home Improvement  
LVI Environmental Services  
M&T Bank  
Mac Stringer Painting & Sons  
MacGregors Grill & Tap Room  
Macy's  
Maplewood Nursing Home  
Marciano's Flooring  
Marcy A. Hartle, MD  
Mario's Italian Restaurant  
Mark's Pizzeria  
Marshalls  
Mary Cariola Children's Center  
Massena Savings & Loan



## 2013 EMPLOYERS

Maxim Spa & Salon  
 Maximus Federal Services  
 Maynards Electric Supply  
 McDonalds  
 Melting Pot, The  
 Mercedes-Benz Manhattan, Inc.  
 Mercury Radio Arts  
 Meticulosity  
 Michaels  
 Micro Instruments Corp.  
 Miller Pharmacy  
 Monro Muffler Brake  
 Monroe 2-Orleans BOCES  
 Monroe Ambulance  
 Monroe Community College  
 Monroe Community College Association  
 Monroe Community College Child Care Center  
 Monroe Community Hospital  
 Monroe County  
 Monroe County Dept. of Environmental Services  
 Monroe County Dept. of Social Services  
 Monroe County Jail  
 Monroe County Sheriff's Office  
 Moog Industrial Group  
 Morgan Management  
 Museum of Science & Industry  
 MVP Healthcare  
 Nationwide Precision Products  
 Nazareth College  
 New England Motor Freight  
 New York Public Interest Research Group  
 New York State Assembly  
 New York State Dept. of Labor  
 New York State Dept. of Transportation  
 Newark Wayne Community Hospital  
 Nixon Peabody LLP  
 North Country Family Health Center  
 North Greece Grocery  
 Northern Air Systems  
 Northwestern Mutual  
 NurseCore  
 O'Brien & Gere  
 O'Connor Chevrolet  
 Odyssey Controls  
 Office Max  
 Ogden Dental Group  
 Old Navy

Olean General Hospital  
 Olive Garden  
 ONE Restaurant & Lounge  
 Ontario County Human Resources Dept.  
 Optimax Systems  
 Ortho-Clinical Diagnostics, Inc.  
 Outside the Box Art Gallery  
 Oxbo International Corporation  
 Palmer's Direct to You Market  
 Panera Bread  
 Papa John's Pizza  
 Parker Hannifin Corporation  
 PathStone  
 Patio Enclosures  
 Paychex  
 Pediatric Dentistry Bonita  
 Penfield Central School District  
 Penfield Town Court  
 People, Inc.  
 Pepsi Bottling Group  
 Performance Hobbies  
 Perinton Ambulance  
 Perlo's Italian Grill  
 Petco  
 PetSmart  
 Pfaudler, Inc.  
 PICS Telecom  
 Piede Law LLP  
 Pittsford Pediatric Dentistry  
 Pizza Hut  
 Pizza Paul's  
 Planet Fitness  
 Plato's Closet  
 Plum Garden Restaurant  
 Pontillo's Pizzeria  
 Premier Parking  
 Price Chopper  
 Prime Steakhouse  
 Pudgies Pizza  
 Q Dental  
 QCI Direct  
 Quaker Steak & Lube  
 Quality Vision International  
 Quick Fill Gas Station  
 Quickwork Co.  
 Radio Shack  
 Red Robin Gourmet Burgers  
 Reeds Jewelers  
 RG&E  
 Richards & West Jewelry

Ricole Property Management  
 Ridge Road Fire District  
 Rite Aid Pharmacy  
 Rizzo Group  
 Roc City Furniture  
 Rochester Childfirst Network  
 Rochester City School District  
 Rochester Drug Cooperative  
 Rochester Eye and Tissue Bank  
 Rochester Gear, Inc.  
 Rochester Regional Health System  
 Rochester Immediate Care  
 Rochester Institute of Technology  
 Rochester Institute of Technology  
 - Semiconductor & Microsystems Fabrication Laboratory  
 Rochester Psychiatric Center  
 Rochester Red Wings  
 Rochester Rehabilitation Center  
 Rochester Spunk, LLC  
 Rochester Yacht Club  
 RochesterWorks  
 Rohrbach Brewing Company  
 Romano's Macaroni Grill  
 RTG Dental Lab  
 Rural/Metro Corporation  
 Rush-Henrietta Central School District  
 Safeway  
 Sakura Home Restaurant  
 Salvatore's Pizzeria  
 Saponi Café  
 Save A Lot Grocery Store  
 Savers  
 School Pictures Incorporated  
 Scott's Hallmark  
 Seabreeze Amusement Park  
 Sealed Air Corporation  
 Sears  
 Securitas USA  
 SEVideo  
 Shapiro & Duncan  
 Sherwin-Williams  
 Shirt Factory Café  
 Shooters  
 Shorts Bar & Grill  
 Ski Company, The  
 SmugMug  
 Sodexo  
 Solid Surfaces  
 SourceHOV

## 2013 EMPLOYERS

Spa at LaBella  
 Spa Elan  
 Spex Precision  
 Springbrook  
 St. Ann's Community  
 St. John Fisher College  
 St. John's Child Care  
 St. John's Home  
 State Farm Insurance  
 Steven I. Gold, DDS  
 Sticky Lips BBQ  
 StoreCrafters, Inc.  
 Storybook Childcare  
 Strong National Museum of Play  
 Stuart Wieder, DDS  
 Summit Knolls Homeowners Association  
 SUNY Brockport  
 SUNY Buffalo State EOP  
 SUNY Geneseo - Campus Auxiliary  
 Services  
 SUNY University at Binghamton  
 SUNY University at Buffalo  
 Sutherland Global Services  
 Swan's Market  
 Switzerland Inn  
 Syracuse University  
 Taco Bell  
 Target  
 tBones Steakhouse  
 Tennis Club of Rochester  
 TGIFriday's  
 Tim Horton's  
 Tomra NY Recycling  
 Tony D's  
 Tops Friendly Markets  
 Town of Chili Public Library  
 Town of Greece Volunteer Ambulance  
 Town of Henrietta  
 Town of Irondequoit  
 Town of Perinton  
 Town of Rush Recreation Department  
 Town of Webster Public Library  
 Town of West Seneca, NY  
 TREK, Inc.  
 Trillium Health  
 U.S. Army  
 U.S. Army Reserves  
 U.S. Coast Guard  
 U.S. Department of Veterans Affairs  
 U.S. Marine Corps

U.S. Navy  
 U.S. Postal Service  
 U.S. Security Associates  
 Ultra  
 UltraMobile Imaging  
 United Airlines  
 United Pensacola Refinery  
 United Radio Service  
 Unity at Home  
 Unity Hospital  
 University Medical Imaging  
 University of Miami  
 University of North Carolina at  
 Wilmington  
 University of Rochester  
 University of Rochester - Laboratory for  
 Laser Energetics  
 Uno's Chicago Bar & Grill  
 UPS  
 Upstate Executive Legal Process  
 UR Medicine  
 Urgent Care Now  
 VA Western New York Healthcare  
 System  
 Val Tech Holdings, Inc.  
 Verizon Wireless  
 Veterans Outreach Center  
 Victor Dental Care  
 Victoria's Secret  
 Villa of Hope  
 Village Green Nursing Home  
 Villages at Unity, The  
 Vision Nissan  
 Visions Hotel  
 Visionworks  
 Visiting Nurse Service  
 Von Maur  
 VWR International  
 Walgreens  
 Walker Brush  
 Walmart  
 Walt Disney World  
 Waste Management  
 Wayne County Water & Sewer Authority  
 Wayne-Finger Lakes BOCES  
 Wegmans  
 Wendy's  
 Wesley Community  
 West Irondequoit School District  
 Westfall Academy

White Buck Inn  
 WHAM-TV  
 Whole Foods Market  
 Wilmorite Security  
 Wilson Commencement Park  
 Windsor Technology  
 Windstream Communications  
 Women's Gynecology & Childbirth  
 Associates  
 Woodcliff Salon & Spa  
 WROC-TV  
 Xerox  
 YMCA Buffalo Niagara  
 YMCA of Greater Rochester  
 Zoetek Medical Sales & Service  
 Zotos International

The tables shown on the following pages are organized hierarchically to avoid presenting duplicate data. That is, graduates who are counted in one category (e.g., "Number Continuing Their Education Full-Time") are not counted in the subsequent categories (e.g., "Number Employed Full-Time"). The pages facing the tables, however, show all employers and transfer colleges that respondents reported on the Graduate Follow-Up Survey.

## TRANSFER CURRICULUM - A.S.

### Comparison Summary: Transfer Curriculum - A.S.

	YEAR OF GRADUATION			
	2013	2012	2011	2010
NUMBER RECEIVING DEGREES	1,810	1,825	1,806	1,596
NUMBER RESPONDING TO SURVEY	819	902	1,150	1,056
RESPONSE RATE	45%	49%	64%	66%
NUMBER CONTINUING THEIR EDUCATION FULL-TIME	552	550	729	666
NUMBER EMPLOYED FULL-TIME	161	189	231	203
NUMBER CONTINUING THEIR EDUCATION / EMPLOYED PART-TIME	87	119	144	144
NUMBER AVAILABLE FOR EMPLOYMENT	14	20	23	25
NUMBER OTHER*	5	24	23	18
NUMBER NON-RESPONDENTS WHO TRANSFERRED (DATA PROVIDED BY THE NATIONAL STUDENT CLEARINGHOUSE)	477	619	339	516

\* Includes those with undecided plans for employment or further education.

# Addictions Counseling

### **2013 COLLEGES**

Keuka College  
Monroe Community College  
SUNY Brockport

### **PROGRAMS**

Social Work (2)  
Nursing  
Social Work (3)

### **2013 EMPLOYERS**

Keystone Builders Supply Company  
Office Max  
Veterans Outreach Center  
Villa of Hope  
Walgreens

### **POSITIONS**

Project Manager  
Sales Associate  
Addictions Counselor  
Life Skills Instructor  
(Not Disclosed)

## Addictions Counseling

	YEAR OF GRADUATION			
	2013	2012	2011	2010
NUMBER RECEIVING DEGREES	18	29	23	18
NUMBER RESPONDING TO SURVEY	7	19	12	14
NUMBER CONTINUING THEIR EDUCATION FULL-TIME	3	10	8	9
NUMBER EMPLOYED FULL-TIME	2	5	1	2
NUMBER CONTINUING THEIR EDUCATION / EMPLOYED PART-TIME	1	1	1	3
NUMBER AVAILABLE FOR EMPLOYMENT	1	1	1	0
NUMBER OTHER*	0	2	1	0
NUMBER NON-RESPONDENTS WHO TRANSFERRED (DATA PROVIDED BY THE NATIONAL STUDENT CLEARINGHOUSE)	5	7	3	4

*\*Includes those with undecided plans for employment or further education*

## Addictions Counseling

This program is designed to prepare students for a future in addiction counseling after completing the baccalaureate in Social Work or another relevant field.

This program is designed around the 12 Core Functions designated as essential by the New York State Office of Alcohol & Substance Abuse Services and required for completion of the Credentialed Alcohol & Substance Abuse Counselor (CASAC). These core functions are addressed in six 3-credit alcohol & chemical dependency counseling classes.



# Advertising: Commercial Art

### **2013 COLLEGES**

College for Creative Studies  
Monroe Community College  
Rochester Institute of Technology  
School of Visual Arts

### **PROGRAMS**

Textile Design  
Fine Arts  
Graphic Design; Illustration  
Advertising

### **2013 EMPLOYERS**

(Not Disclosed)  
(Self-Employed)  
Bowlmor Lanes  
Greece Central School District  
Home Depot

### **POSITIONS**

Sales Associate  
Artist  
Cook  
Custodian  
Merchandising Execution Associate

## Advertising: Commercial Art

	YEAR OF GRADUATION			
	2013	2012	2011	2010
NUMBER RECEIVING DEGREES	12	15	8	4
NUMBER RESPONDING TO SURVEY	7	4	6	4
NUMBER CONTINUING THEIR EDUCATION FULL-TIME	5	3	3	3
NUMBER EMPLOYED FULL-TIME	1	1	2	1
NUMBER CONTINUING THEIR EDUCATION / EMPLOYED PART-TIME	1	0	1	0
NUMBER AVAILABLE FOR EMPLOYMENT	0	0	0	0
NUMBER OTHER*	0	0	0	0
NUMBER NON-RESPONDENTS WHO TRANSFERRED (DATA PROVIDED BY THE NATIONAL STUDENT CLEARINGHOUSE)	3	7	1	0

\* Includes those with undecided plans for employment or further education.

## Advertising: Commercial Art

The Advertising: Commercial Art degree prepares students interested in commercial art, commercial illustration, and media arts for further study in these areas at a four-year college or university.

## Business Administration

### 2013 COLLEGES

(Undecided)  
 Ashford University  
 Canisius College  
 Cornell University  
 Eckerd College  
 Everest University  
 Florida Atlantic University  
 George Mason University  
 Illinois State University  
 Monroe Community College

Nazareth College  
 Niagara University  
 Northeastern University  
 Roberts Wesleyan College  
 Rochester Institute of Technology

St. Bonaventure University  
 St. John Fisher College

SUNY Brockport

SUNY Buffalo State College  
 SUNY Cortland  
 SUNY Empire State College

SUNY Genesee Community College  
 SUNY Geneseo

SUNY Oswego  
 SUNY University at Albany  
 SUNY University at Buffalo  
 University of Hawaii  
 University of South Florida

### PROGRAMS

Accounting; Business; Business Administration (2)  
 Accounting  
 Finance-Math  
 Industrial & Labor Relations  
 Business Administration  
 Business Management  
 Accounting  
 Public Relations  
 Biology-Math  
 Accounting (2); Business Administration (2);  
 Communications; Engineering; Graphic Design;  
 Radiologic Technology  
 Business Management; Occupational Therapy  
 Accounting  
 Finance  
 Organizational Management  
 Accounting (2); Business Management; International  
 Business-Management; International Business-  
 Marketing; Management Information Systems;  
 Marketing; Media Marketing; Statistics; Sustainability  
 Finance  
 Accounting (9); Corporate Finance-Economics;  
 Economics; Finance; Human Resource Management  
 (3); Marketing (2); Nursing; Sports Management  
 (Not Disclosed); Accounting (11); Accounting-Finance;  
 Business; Business Administration (7); Business  
 Management (2); Computer Information Systems-  
 Business Administration; Finance (2); International  
 Business  
 Business Administration; Fashion Merchandising  
 Business Economics; Management  
 Business-Accounting; Business (2), Management, &  
 Economics; Finance-Aviation Management  
 Nursing  
 (Not Disclosed); Accounting (3); Business Administration  
 (2); Business-Accounting  
 Business Administration  
 Accounting  
 Business (2); Industrial Engineering; Mathematics  
 Travel Industry Management  
 Criminal Justice

### 2013 EMPLOYERS

(Not Disclosed)  
 (Self-Employed)  
 AccounTemp  
 ADT Security Services  
 Advanced Heating & Cooling

### POSITIONS

(Not Disclosed, 5); Sales Associate  
 Administrative Assistant  
 Accounts Payable Clerk  
 Southeast Regional PS Manager, OSC; Team Manager  
 HVAC Technician

## Business Administration

	YEAR OF GRADUATION			
	2013	2012	2011	2010
NUMBER RECEIVING DEGREES	294	263	294	291
NUMBER RESPONDING TO SURVEY	142	132	196	208
NUMBER CONTINUING THEIR EDUCATION FULL-TIME	89	71	131	132
NUMBER EMPLOYED FULL-TIME	43	43	44	46
NUMBER CONTINUING THEIR EDUCATION / EMPLOYED PART-TIME	7	15	14	19
NUMBER AVAILABLE FOR EMPLOYMENT	2	1	2	7
NUMBER OTHER*	1	2	5	42
NUMBER NON-RESPONDENTS WHO TRANSFERRED (DATA PROVIDED BY THE NATIONAL STUDENT CLEARINGHOUSE)	82	82	46	80

\* Includes those with undecided plans for employment or further education.

## Business Administration

The Associate in Science degree in Business Administration is designed to be equivalent to the first two years of a bachelor degree program. This program is for students who are planning to transfer to a four-year college or university and would like to major in such areas as: accounting, finance, management, marketing, human resources, management information systems, and other business related fields.

# Business Administration

### 2013 EMPLOYERS

ALDO Shoes  
Apple Store, The  
Athar Management Co.  
Berry Plastics  
Bill Gray's Restaurant  
Blue Cross Arena  
Braemar Country Club  
Buffalo Wild Wings  
Caledonia-Mumford School District  
Canandaigua National Bank  
Champps Americana  
Concentrix  
CooperVision, Inc.  
Crofton Associates  
D.B. Roberts Company  
Dichotomy Rochester  
Emberwood Fire Grill  
Environmental Quality Assurance  
ESL  
FedEx Ground  
Finger Lakes DDSO  
Finger Lakes Federal Credit Union  
Foot Locker  
G.H. Bass & Co.  
General Electric  
Genesee Brew House  
Global Phoenix Computer Technology Solutions  
Greater Rochester International Airport  
Harris Corporation  
Hedges Nine Mile Point Restaurant  
Helpful Technologies, Inc.  
Hickey Freeman  
Highland Hospital  
Home Depot  
Illinois State University  
ITT  
J.C. Smith, Inc.  
Jewelry & Coin Exchange  
Jines Restaurant  
Julians Dry Cleaners  
Leaf & Bean Coffee Company  
Lombard Cecil Insurance Agency  
Lord & Taylor  
Lowes Home Improvement  
LVI Environmental Services  
M&T Bank  
McDonalds  
Monroe Community College  
Morgan Management  
MVP Healthcare

### POSITIONS

Assistant Manager  
Sales Associate  
Property Manager  
Slitter Operator  
Cook/Supervisor; General Manager  
Caterer  
Landscape Supervisor  
Cook  
Treasurer  
Bank Teller  
Hostess/Busser  
Customer Service Representative  
Senior Buyer/Planner  
Accountant  
Division Manager  
Gallery Director  
Bartender  
Service Technician  
Bank Teller (2)  
Operation Administrator  
Direct Service Aid  
Member Services Representative  
Manager  
Retail Sales Manager  
Customer Service Representative  
Cook  
Customer Service Representative  
Transportation Security Officer  
Engineering Specialist; Pricing Analyst  
Server  
Administrative Manager  
Group Leader  
Food Service Associate  
Special Services Associate  
Graduate Assistant  
Composite Assembler  
Manager & Sales Representative  
Technician  
Busser  
Presser  
Bartender  
Account Manager  
Receiving Clerk  
Department Manager  
Project Coordinator  
Lease Documentation Specialist  
Manager  
Tutor  
Property Manager  
Research Coordinator

# Business Administration

### 2013 EMPLOYERS

Northwestern Mutual  
ONE Restaurant & Lounge  
Parker Hannifin Corporation  
Patio Enclosures  
Paychex  
Performance Hobbies  
Plato's Closet  
RG&E  
Ricole Property Management  
Rochester City School District  
Rochester General Hospital  
SUNY Brockport  
Taco Bell  
Target  
Tennis Club of Rochester  
TGIFriday's  
Tim Horton's  
Town of Webster Public Library  
Unity Hospital  
UPS  
UR Medicine  
Visions Hotel  
VWR International  
Walgreens  
Wegmans

YMCA of Greater Rochester

### POSITIONS

Financial Representative (Intern)  
Bartender/Server  
Testing Operator  
Marketer  
Systems Analyst  
Manager  
Manager  
Underground Utility Inspector  
Accounting Clerk  
Custodian  
Administrative Assistant; Cardiology Technician  
Fitness Center Attendant  
Manager  
Logistics Team Member; Team Member  
Tennis Coach  
Server  
Supervisor  
Weekend Anchor Clerk  
RN  
Office Manager  
Medical Billing Associate  
Desk Clerk  
Warehouse Associate  
Assistant Manager  
(Not Disclosed); Chef (2); Customer Service  
Representative (4); Front End Coordinator;  
Management Intern; Operations Accounting Intern;  
Pharmacy Technician; Produce Staff Member  
Member Services Representative



# Cinema & Screen Studies

### **2013 COLLEGES**

(Undecided)  
Monroe Community College  
SUNY Brockport  
  
SUNY Empire State College  
SUNY Oswego  
SUNY University at Buffalo  
Syracuse University

### **PROGRAMS**

(Undecided)  
(Undecided); Graphic Design; Theatre  
Communications-Media Production; Journalism &  
Broadcasting (2)  
Media Arts  
Cinema & Screen Studies  
Media Studies (2)  
Television, Radio, & Film

### **2013 EMPLOYERS**

(Not Disclosed)  
Best Buy  
Honeoye Falls Marketplace  
Mac Stringer Painting & Sons LLC  
North Greece Grocery  
SEVideo  
United Airlines

### **POSITIONS**

Bartender, Coach  
Supervisor  
Deli Clerk  
House Painter  
Cashier  
Videographer  
Grounds Crew Member

## Cinema & Screen Studies

	YEAR OF GRADUATION			
	2013	2012	2011	2010
NUMBER RECEIVING DEGREES	28	19	14	17
NUMBER RESPONDING TO SURVEY	16	10	7	11
NUMBER CONTINUING THEIR EDUCATION FULL-TIME	11	4	4	5
NUMBER EMPLOYED FULL-TIME	1	2	1	3
NUMBER CONTINUING THEIR EDUCATION / EMPLOYED PART-TIME	3	4	2	1
NUMBER AVAILABLE FOR EMPLOYMENT	1	0	0	2
NUMBER OTHER*	0	0	0	0
NUMBER NON-RESPONDENTS WHO TRANSFERRED (DATA PROVIDED BY THE NATIONAL STUDENT CLEARINGHOUSE)	4	4	3	6

*\*Includes those with undecided plans for employment or further education*

## Cinema & Screen Studies

The Cinema and Screen Studies Program offers a strong Liberal Arts perspective on motion picture and television history, culture, theory, and production. Students are introduced to cinema as a medium of mass communication which combines two art forms, photography and theater, to communicate powerful stories with vivid pictures and strong emotion. Students investigate cinema and television through critical studies and create images of their own through scriptwriting and introductory production opportunities. Finally, students gain an appreciation for cinema and television from a commercial standpoint since these media exist not only in the marketplace of ideas but also as end products of an industrial enterprise.

Upon completion of this degree, students are able to continue their studies at baccalaureate film or mass media degree programs where they apply what they have learned at MCC to more advanced studies in this or related fields.

# Communication & Media Arts

### **2013 COLLEGES**

Harding University  
Rochester Institute of Technology

St. John Fisher College  
SUNY Brockport

### **PROGRAMS**

Journalism  
Communications Media Technology; Technical  
Communications  
Communications; Sociology-Marketing  
Communications (3); Journalism & Broadcasting; Political  
Science-Pre-Law; Theatre-Business

### **2013 EMPLOYERS**

(Self-Employed)  
Best Buy  
Cardiac Life Products  
City of Rochester  
Deb Shops  
Delta Sonic  
Italian Osteria Abruzzi  
Jitters Cafe  
Sutherland Global Services  
University of Rochester  
Wegmans  
Wendy's  
WHAM-TV  
WROC-TV

### **POSITIONS**

Landlord  
Sales Associate  
Sales Manager  
Armed Guard  
Retail Clerk  
Technician/Sales Representative  
Server  
Banquet Server  
Consultant  
Publications Manager  
Customer Service Coordinator  
Customer Service Representative  
Intern  
Photographer

## TRANSFER CURRICULUM - A.S.

### Communication & Media Arts

	YEAR OF GRADUATION			
	2013	2012	2011	2010
NUMBER RECEIVING DEGREES	46	62	55	70
NUMBER RESPONDING TO SURVEY	15	20	36	40
NUMBER CONTINUING THEIR EDUCATION FULL-TIME	10	9	22	21
NUMBER EMPLOYED FULL-TIME	3	8	8	12
NUMBER CONTINUING THEIR EDUCATION / EMPLOYED PART-TIME	1	2	4	7
NUMBER AVAILABLE FOR EMPLOYMENT	0	0	1	0
NUMBER OTHER*	1	1	1	0
NUMBER NON-RESPONDENTS WHO TRANSFERRED (DATA PROVIDED BY THE NATIONAL STUDENT CLEARINGHOUSE)	15	25	7	30

\* Includes those with undecided plans for employment or further education.

### Communication & Media Arts

The Associate in Science degree in Communication & Media Arts emphasizes writing, speaking, and the presentation of visual information, while providing an excellent foundation in liberal arts and sciences. The communications courses focus on topics such as audience analysis, copyright laws, freedom and ethics of the press and speech, and the impact of communications technology on education, business, and the formation of public opinion. Through laboratory and studio experiences, students create publications, develop visual and broadcast information formats, and become familiar with the equipment used by communications specialists.

# Computer Information Systems

### **2013 COLLEGES**

Penn State (Online)  
Rochester Institute of Technology  
SUNY Brockport

### **PROGRAMS**

Information Systems  
Computing Security  
Computer Information Systems

### **2013 EMPLOYERS**

Empire Precision Plastics  
Hillside Children's Center  
Maynards Electric Supply  
University of Rochester

### **POSITIONS**

IT Manager  
Youth Care Professional  
Warehouse Associate  
Analyst Programmer

## Computer Information Systems

	YEAR OF GRADUATION			
	2013	2012	2011	2010
NUMBER RECEIVING DEGREES	6	5	6	11
NUMBER RESPONDING TO SURVEY	4	2	2	6
NUMBER CONTINUING THEIR EDUCATION FULL-TIME	2	0	1	2
NUMBER EMPLOYED FULL-TIME	2	1	1	2
NUMBER CONTINUING THEIR EDUCATION / EMPLOYED PART-TIME	0	1	0	1
NUMBER AVAILABLE FOR EMPLOYMENT	0	0	0	0
NUMBER OTHER*	0	0	0	1
NUMBER NON-RESPONDENTS WHO TRANSFERRED (DATA PROVIDED BY THE NATIONAL STUDENT CLEARINGHOUSE)	0	2	2	5

\* Includes those with undecided plans for employment or further education.

## Computer Information Systems

Information systems professionals play a key and vital role in the management and growth of an organization. Through a combination of computer management and social skills, these professionals become the creative problem-solvers who define and implement the information needs of an organization and develop related organizational structures. The program develops in the students a basic understanding of computer skills and strategies to be applied to the discipline of computer information systems. The foundations are then more fully developed in a baccalaureate program in computer information systems, management information systems, telecommunications, database administration, or other computer systems curricula.



# Computer Science

### 2013 COLLEGES

Rochester Institute of Technology  
SUNY University at Buffalo  
Syracuse University

### PROGRAMS

Computer Science (3)  
Computer Science  
Computer Science

### 2013 EMPLOYERS

CloudCheckr  
Jines Restaurant  
Odyssey Controls  
Syracuse University

### POSITIONS

Software Developer  
Server  
Process Controls Engineer  
Student Aide

## TRANSFER CURRICULUM - A.S.

### Computer Science

	YEAR OF GRADUATION			
	2013	2012	2011	2010
NUMBER RECEIVING DEGREES	13	16	7	11
NUMBER RESPONDING TO SURVEY	6	10	5	5
NUMBER CONTINUING THEIR EDUCATION FULL-TIME	5	8	3	3
NUMBER EMPLOYED FULL-TIME	1	2	2	2
NUMBER CONTINUING THEIR EDUCATION / EMPLOYED PART-TIME	0	0	0	0
NUMBER AVAILABLE FOR EMPLOYMENT	0	0	0	0
NUMBER OTHER*	0	0	0	0
NUMBER NON-RESPONDENTS WHO TRANSFERRED (DATA PROVIDED BY THE NATIONAL STUDENT CLEARINGHOUSE)	5	5	2	6

\* Includes those with undecided plans for employment or further education.

### Computer Science

Computer Science includes both the study of underlying theories of computing as well as the specific applications of information manipulation and problem-solving. The Computer Science program provides the first two years of instruction for students who plan to transfer to baccalaureate programs at four-year colleges. The program offers a balance of computer science, mathematics, and science courses with sufficient flexibility to accommodate a range of student career interests and the various emphases and requirements of upper division programs.

# Criminal Justice

### 2013 COLLEGES

Monroe Community College  
Niagara University  
Roberts Wesleyan College  
Rochester Institute of Technology  
St. John Fisher College  
SUNY Brockport

SUNY Buffalo State College  
SUNY Empire State College

### PROGRAMS

Non-Matriculated; Paralegal Studies  
Criminal Justice  
Criminal Justice  
Criminal Justice (2)  
Interdisciplinary Studies  
Criminal Justice (3); Criminal Justice-Sociology (3);  
Political Science  
Criminal Justice  
Criminal Justice

### 2013 EMPLOYERS

(Not Disclosed)

(Undisclosed Pharmacy)  
B&L Wholesale Supply  
Bath & Body Works  
City of Rochester  
Concentrix  
Lowes Home Improvement  
Rochester Regional Health System  
U.S. Marine Corps  
Wegmans  
West Irondequoit School District  
Wilmore Security, LLC  
Xerox

### POSITIONS

Certified Nurse's Assistant; Security Officer; Warehouse  
Worker  
Cashier  
Warehouse Assistant  
Cashier  
Police Officer  
Sales Representative  
Stock Clerk  
Security Guard (2)  
Sergeant/Radio Operator  
(Not Disclosed); Customer Service Representative  
(Not Disclosed)  
Security Officer  
Senior Assistance Key Operator

## Criminal Justice

	YEAR OF GRADUATION			
	2013	2012	2011	2010
NUMBER RECEIVING DEGREES	47	54	56	51
NUMBER RESPONDING TO SURVEY	21	27	36	38
NUMBER CONTINUING THEIR EDUCATION FULL-TIME	14	14	18	21
NUMBER EMPLOYED FULL-TIME	5	7	12	12
NUMBER CONTINUING THEIR EDUCATION / EMPLOYED PART-TIME	2	3	5	5
NUMBER AVAILABLE FOR EMPLOYMENT	0	1	1	0
NUMBER OTHER*	0	2	0	0
NUMBER NON-RESPONDENTS WHO TRANSFERRED (DATA PROVIDED BY THE NATIONAL STUDENT CLEARINGHOUSE)	16	18	5	12

\* Includes those with undecided plans for employment or further education.

## Criminal Justice

This program provides the first two years of instruction for students who plan to transfer to a bachelor degree program at a four-year college or university. It is appropriate for students interested in advanced education to pursue a career in probation, parole, public safety, or criminal justice planning. It is also an appropriate avenue to public administration and public service degree programs.

# Diversity & Community Studies

### **2013 COLLEGES**

SUNY Brockport  
University of Rochester

### **PROGRAMS**

Sociology  
African & African-American Studies-Psychology

### **2013 EMPLOYERS**

### **POSITIONS**

## Diversity & Community Studies

	YEAR OF GRADUATION			
	2013	2012	2011	2010
NUMBER RECEIVING DEGREES	2	2	•	•
NUMBER RESPONDING TO SURVEY	2	2	•	•
NUMBER CONTINUING THEIR EDUCATION FULL-TIME	2	1	•	•
NUMBER EMPLOYED FULL-TIME	0	1	•	•
NUMBER CONTINUING THEIR EDUCATION / EMPLOYED PART-TIME	0	0	•	•
NUMBER AVAILABLE FOR EMPLOYMENT	0	0	•	•
NUMBER OTHER*	0	0	•	•
NUMBER NON-RESPONDENTS WHO TRANSFERRED (DATA PROVIDED BY THE NATIONAL STUDENT CLEARINGHOUSE)	0	0	•	•

\*Includes those with undecided plans for employment or further education  
• First degree awarded in 2012

## Diversity & Community Studies

This is a transfer degree program for individuals seeking careers that require knowledge and skills to function in diverse settings. It is suited to those who desire employment in governmental or non-governmental organizations, in multinational corporations, and in agencies of civil society. It is an interdisciplinary program that employs the analytical frameworks of the social sciences and other disciplines of the liberal arts. The program emphasizes the application of analytical and experiential skills to real world situations.

Students have the option to choose one of five possible tracks in this degree program: African American Studies, Cultural Studies, Gender and Sexuality Studies, Global Studies, or Urban Studies



# Engineering Science

### 2013 COLLEGES

Rochester Institute of Technology

SUNY Brockport

SUNY University at Binghamton

SUNY University at Buffalo

University of Houston

University of Miami

University of Rochester

### PROGRAMS

Computer Engineering (2); Computer Science; Electrical Engineering (3); Engineering; Mechanical Engineering (5)

Physics-Secondary Education

Mechanical Engineering

Civil Engineering; Electrical Engineering (2); Engineering

Mechanical Engineering

Civil Engineering

Mechanical Engineering (2)

### 2013 EMPLOYERS

(Not Disclosed)

Ericsson

INFICON

ITT Gould's Pumps

Krony's Pizza

Lowes Home Improvement

Plum Garden Restaurant

Quality Vision International

RIT Semiconductor & Microsystems Fab. Lab.

University of Miami

Univ. of Rochester Lab. for Laser Energetics

Windstream Communications

### POSITIONS

(Not Disclosed, 3)

Field Engineer

Research Intern

Co-Op Student

Restaurant Employee

Customer Service Loader

Busser

Electrical Technician

Co-Op Student

Research Assistant

Senior Manufacturing Engineer

Test Technician II

## TRANSFER CURRICULUM - A.S.

### Engineering Science

	YEAR OF GRADUATION			
	2013	2012	2011	2010
NUMBER RECEIVING DEGREES	42	47	47	34
NUMBER RESPONDING TO SURVEY	24	29	38	29
NUMBER CONTINUING THEIR EDUCATION FULL-TIME	20	20	27	25
NUMBER EMPLOYED FULL-TIME	4	6	5	2
NUMBER CONTINUING THEIR EDUCATION / EMPLOYED PART-TIME	0	1	4	2
NUMBER AVAILABLE FOR EMPLOYMENT	0	2	1	0
NUMBER OTHER*	0	0	1	0
NUMBER NON-RESPONDENTS WHO TRANSFERRED (DATA PROVIDED BY THE NATIONAL STUDENT CLEARINGHOUSE)	13	12	7	5

\* Includes those with undecided plans for employment or further education.

### Engineering Science

The program in Engineering Science is designed for students planning a career in the engineering professions who intend to transfer to a baccalaureate program in engineering. It provides essentially the same educational experience during the first two years as that of four-year institutions and allows transfer with full junior status. In addition, the program is broadly based so as to fully prepare graduates, upon transfer, to specialize in any of the various fields of engineering such as mechanical, electrical, aerospace, chemical and biomedical.

## Fine Arts

### **2013 COLLEGES**

Monroe Community College  
Rochester Institute of Technology  
SUNY Brockport  
SUNY Purchase

### **PROGRAMS**

Psychology  
Photography  
Art; Recreation & Leisure Studies  
Visual Arts

### **2013 EMPLOYERS**

Atria Senior Living  
Bates-Rich Beginnings Child Care  
Episcopal SeniorLife Communities  
Heritage Christian Services  
Knux Tattoo  
Outside the Box Art Gallery  
Petco  
Target  
Walt Disney World  
Wegmans

### **POSITIONS**

Engage Life Program Instructor  
Teacher's Aide  
Server  
Assistant Manager  
Tattoo Artist  
Gallery Attendant  
Grooming Assistant  
Team Member  
Merchandiser  
Cashier

## TRANSFER CURRICULUM - A.S.

### Fine Arts

	YEAR OF GRADUATION			
	2013	2012	2011	2010
NUMBER RECEIVING DEGREES	33	32	26	20
NUMBER RESPONDING TO SURVEY	12	17	14	17
NUMBER CONTINUING THEIR EDUCATION FULL-TIME	5	11	10	9
NUMBER EMPLOYED FULL-TIME	4	3	3	3
NUMBER CONTINUING THEIR EDUCATION / EMPLOYED PART-TIME	2	3	1	1
NUMBER AVAILABLE FOR EMPLOYMENT	1	0	0	3
NUMBER OTHER*	0	0	0	1
NUMBER NON-RESPONDENTS WHO TRANSFERRED (DATA PROVIDED BY THE NATIONAL STUDENT CLEARINGHOUSE)	6	6	3	3

\* Includes those with undecided plans for employment or further education.

### Fine Arts

This program is designed for students seeking to continue their education at a four-year college or university in preparation for a career in an area such as design, drawing, painting, sculpture, or art history.

# Health Studies

### **2013 COLLEGES**

Finger Lakes Health Coll. of Nursing  
Monroe Community College  
Rochester Institute of Technology  
SUNY Brockport  
West Chester University

### **PROGRAMS**

Nursing  
Nursing (2)  
Nutrition Management  
Health Science  
Public Health

### **2013 EMPLOYERS**

(Not Disclosed)  
Borg & Ide Imaging  
Corner Bakery  
Four Dogs Tavern  
Jack n Jill Child Care  
Monroe Community College  
Monroe Community Hospital  
St. John's Home  
University of Rochester

### **POSITIONS**

(Not Disclosed, 3)  
Medical Billing Associate  
Catering Supervisor  
Hostess  
Assistant Director  
Tutor  
Certified Nurse's Assistant  
Certified Nurse's Assistant  
Receptionist

## Health Studies

	YEAR OF GRADUATION			
	2013	2012	2011	2010
NUMBER RECEIVING DEGREES	20	25	14	8
NUMBER RESPONDING TO SURVEY	12	9	6	6
NUMBER CONTINUING THEIR EDUCATION FULL-TIME	4	6	3	4
NUMBER EMPLOYED FULL-TIME	3	1	1	0
NUMBER CONTINUING THEIR EDUCATION / EMPLOYED PART-TIME	4	2	2	2
NUMBER AVAILABLE FOR EMPLOYMENT	1	0	0	0
NUMBER OTHER*	0	0	0	0
NUMBER NON-RESPONDENTS WHO TRANSFERRED (DATA PROVIDED BY THE NATIONAL STUDENT CLEARINGHOUSE)	6	11	2	1

\* Includes those with undecided plans for employment or further education.

## Health Studies

This program prepares students for transfer to a four-year college or university that offers health-related degrees. The Health Studies program assists students interested in preparing for health careers such as community health educator, substance abuse counselor, health teacher, health care administrator, medical technician, recreation and leisure specialist, and wellness promotion specialist.

## Human Services

### **2013 COLLEGES**

(Undecided)  
Keuka College  
Monroe Community College  
Nazareth College  
Post University  
Roberts Wesleyan College  
Rochester Institute of Technology/NTID  
SUNY Brockport  
SUNY Fredonia  
SUNY University at Albany

### **PROGRAMS**

(Undecided)  
Social Work  
Addictions Counseling  
Social Work (2); Sociology  
Human Services  
Health Administration; Social Work  
American Sign Language-English Interpreting  
Criminal Justice; Psychology; Science; Social Work (8)  
Social Work  
Social Welfare

### **2013 EMPLOYERS**

(Not Disclosed)  
(Undisclosed Investment Company)  
AmeriCorps  
Arc of Monroe  
ChildTime  
Crestwood Children's Center  
East House Corporation  
Heritage Christian Services  
  
Hickok Center for Brain Injury  
Home Depot  
Lifetime Assistance  
Monroe Community College  
NurseCore  
PathStone  
Solid Surfaces  
Trillium Health  
Villa of Hope  
Wegmans

### **POSITIONS**

(Not Disclosed, 4)  
Customer Service Representative  
Core Member  
Individual Support Specialist  
Assistant Teacher  
Parent Educator  
(Not Disclosed)  
Associate Director of the Employment Alliance; Shift Coordinator  
Relief Staff Member  
Controller  
Community Living Instructor  
Relief Staff Member  
Care Aide  
Case Manager  
Receptionist  
Community Health Worker  
Residential Counselor  
Cashier

## TRANSFER CURRICULUM - A.S.

### Human Services

	YEAR OF GRADUATION			
	2013	2012	2011	2010
NUMBER RECEIVING DEGREES	54	54	47	43
NUMBER RESPONDING TO SURVEY	30	29	24	27
NUMBER CONTINUING THEIR EDUCATION FULL-TIME	20	16	15	18
NUMBER EMPLOYED FULL-TIME	9	4	3	6
NUMBER CONTINUING THEIR EDUCATION / EMPLOYED PART-TIME	1	6	6	2
NUMBER AVAILABLE FOR EMPLOYMENT	0	2	0	0
NUMBER OTHER*	0	1	0	1
NUMBER NON-RESPONDENTS WHO TRANSFERRED (DATA PROVIDED BY THE NATIONAL STUDENT CLEARINGHOUSE)	13	21	7	13

*\*Includes those with undecided plans for employment or further education*

### Human Services

The Human Services A.S. degree program prepares students to transfer and earn a baccalaureate degree in social work, human services, or a related area, by providing both professional and general education courses that parallel the first two years in a four-year institution. Students explore the helping professions in the classroom and gain practical experience through internships at area agencies.

*Note: Prior to 2009, MCC offered an A.S. degree called "Liberal Arts & Sciences/Human Services Certificate."*



### Individual Studies

#### **2013 COLLEGES**

American University  
Rochester Institute of Technology  
  
SUNY Brockport

#### **PROGRAMS**

Music  
Diagnostic Medical Imaging; Nutrition Management;  
Packaging Science  
Public & Mediated Communication

#### **2013 EMPLOYERS**

Campus Ambassadors National  
Irondequoit Country Club  
Rite Aid  
UR Medicine

#### **POSITIONS**

Intern  
Bartender  
Pharmacy Technician  
Help Desk Analyst

## Individual Studies

	YEAR OF GRADUATION			
	2013	2012	2011	2010
NUMBER RECEIVING DEGREES	11	9	•	•
NUMBER RESPONDING TO SURVEY	6	4	•	•
NUMBER CONTINUING THEIR EDUCATION FULL-TIME	6	4	•	•
NUMBER EMPLOYED FULL-TIME	0	0	•	•
NUMBER CONTINUING THEIR EDUCATION / EMPLOYED PART-TIME	0	0	•	•
NUMBER AVAILABLE FOR EMPLOYMENT	0	0	•	•
NUMBER OTHER*	0	0	•	•
NUMBER NON-RESPONDENTS WHO TRANSFERRED (DATA PROVIDED BY THE NATIONAL STUDENT CLEARINGHOUSE)	3	4	•	•

\*Includes those with undecided plans for employment or further education  
• First degree awarded in 2012

## Individual Studies

This program is designed to provide a flexible alternative for students who have defined their academic and career goals and wish to optimize transfer. Each student enrolled in Individual Studies works with an advisor to identify and follow an articulated program, taking courses which will allow them to transfer into their chosen baccalaureate program as seamlessly as possible. Students admitted to this program must adhere to articulated transfer programs under CAPP or through a formal articulation agreement with a four-year institution.

# Information Technology

### 2013 COLLEGES

Rochester Institute of Technology

University of Louisville

### PROGRAMS

Computer Security; Engineering; Information Technology  
(4); Network Security  
Information Technology-Web Design

### 2013 EMPLOYERS

Anthony L. Jordan Health Center

Applebee's

BJ's Wholesale Club

Frank 'n Stein & Son, LLC

Geek Squad City

Planet Fitness

SmugMug

Walgreens

Windstream Communications

### POSITIONS

Data Coordinator

Server

Butcher

Junior Partner

Computer Technician

Front Desk Associate

Software Engineer (Summer Co-Op Student)

Branch Manager

Business Analyst

## Information Technology

	YEAR OF GRADUATION			
	2013	2012	2011	2010
NUMBER RECEIVING DEGREES	18	13	22	8
NUMBER RESPONDING TO SURVEY	10	5	14	7
NUMBER CONTINUING THEIR EDUCATION FULL-TIME	7	1	10	7
NUMBER EMPLOYED FULL-TIME	2	4	3	0
NUMBER CONTINUING THEIR EDUCATION / EMPLOYED PART-TIME	1	0	1	0
NUMBER AVAILABLE FOR EMPLOYMENT	0	0	0	0
NUMBER OTHER*	0	0	0	0
NUMBER NON-RESPONDENTS WHO TRANSFERRED (DATA PROVIDED BY THE NATIONAL STUDENT CLEARINGHOUSE)	5	2	6	1

\* Includes those with undecided plans for employment or further education.

## Information Technology

This program is designed to give students a solid foundation in information technology to foster success in obtaining a four-year degree. Students gain a background in networking, programming, database design, and website design. This program also provides the solid math background required to develop problem-solving skills.

# International Business

### **2013 COLLEGES**

SUNY Brockport  
SUNY Fashion Institute of Technology

### **PROGRAMS**

International Business-Finance  
International Trade & Marketing

### **2013 EMPLOYERS**

Macy's  
Wegmans

### **POSITIONS**

Sales Associate  
Cashier

## TRANSFER CURRICULUM - A.S.

### International Business

	YEAR OF GRADUATION			
	2013	2012	2011	2010
NUMBER RECEIVING DEGREES	4	5	14	6
NUMBER RESPONDING TO SURVEY	2	2	7	3
NUMBER CONTINUING THEIR EDUCATION FULL-TIME	2	1	3	3
NUMBER EMPLOYED FULL-TIME	0	0	1	0
NUMBER CONTINUING THEIR EDUCATION / EMPLOYED PART-TIME	0	1	3	0
NUMBER AVAILABLE FOR EMPLOYMENT	0	0	0	0
NUMBER OTHER*	0	0	0	0
NUMBER NON-RESPONDENTS WHO TRANSFERRED (DATA PROVIDED BY THE NATIONAL STUDENT CLEARINGHOUSE)	2	0	2	2

\* Includes those with undecided plans for employment or further education.

### International Business

This program is designed to prepare students to transfer to a four-year college or university that offers majors in business, international business, marketing, economics, finance, or related areas. The curriculum provides students who are considering a career in international business, commerce, or diplomacy with a solid background in language, culture, international politics, and business. The program provides students with a better understanding of global, political, social, economic, and trade relationships by blending elements of liberal arts and business curricula.

## Liberal Arts & Sciences - General Studies

### 2013 COLLEGES

(Not Disclosed)

(Undecided)

American University  
Ashford University (Online)  
Bard College  
Cazenovia College  
Chamberlain School of Nursing  
College of St. Rose  
Connell University  
Coppin State University  
Cornell University

CUNY School of Professional Studies  
D'Youville College  
Daemen College  
Delaware State University  
Florida International University  
Franklin University  
Isabella G. Hart School of Practical Nursing  
Johnson & Wales University  
Keuka College

Medaille College

Methodist University  
Monroe #1 BOCES  
Monroe College  
Monroe Community College

Mount Holyoke College  
Nazareth College

Niagara University  
Ohio State University  
Roberts Wesleyan College

### PROGRAMS

Not Disclosed (4); Health; Liberal Arts; Social Work  
(Not Disclosed); (Undecided; 2); Biology; Biology-Pre-Medicine; Education; Liberal Arts; Mechanics; Nursing (2); Pharmaceutical Technician  
Music  
Entrepreneurship  
Written Arts  
Visual Communications  
Nursing  
Psychology  
Biology  
Criminal Justice (2)  
Agricultural Sciences; Communications; Industrial & Labor Relations (2)  
Psychology  
Nursing  
Physical Therapy  
Physical Education-Coaching  
Clinical Studies  
Human Resource Management  
Nursing  
Culinary Arts  
American Sign Language-English Interpreting; Organizational Management; Social Work (2)  
Business Administration (2); Education; Psychology; Veterinary Technician  
History  
Nursing (LPN)  
Criminal Justice  
(Not Disclosed, 2); (Undecided, 2); Biology; Business Administration (3); Chemical Engineering; Clinical Laboratory Technician; Communications; Computer Science; Criminal Justice; Culinary Arts; Dental Assisting; Dental Hygiene; English; Health Information Technology; Health Studies (6); Information Systems; Liberal Arts (2); Liberal Arts - Health Related; Liberal Arts – Science; Nursing (14); Paralegal Studies (2); Pathology; Pre-Nursing; Pre-Pharmacy; Radiologic Technology (2); Visual Communications Technology  
Economics-Philosophy  
Communication & Rhetoric; Communication Sciences & Disorders; Inclusive Education-Sociology; Nursing (3); Pre-Nursing; Psychology (2); Social Work (3); Sociology  
Childhood Education-Special Education; Communications Human Nutrition  
Adolescent Education; Business Administration; Forensic Science; Health Administration (2); Ministry-Art; Nursing (5); Organizational Management (2)

## TRANSFER CURRICULUM - A.S.

### Liberal Arts & Sciences - General Studies

	YEAR OF GRADUATION			
	2013	2012	2011	2010
NUMBER RECEIVING DEGREES	1,079	1,106	1,118	942
NUMBER RESPONDING TO SURVEY	459	539	716	599
NUMBER CONTINUING THEIR EDUCATION FULL-TIME	312	338	446	369
NUMBER EMPLOYED FULL-TIME	74	96	139	110
NUMBER CONTINUING THEIR EDUCATION / EMPLOYED PART-TIME	63	79	100	9
NUMBER AVAILABLE FOR EMPLOYMENT	7	11	17	12
NUMBER OTHER*	3	15	14	11
NUMBER NON-RESPONDENTS WHO TRANSFERRED (DATA PROVIDED BY THE NATIONAL STUDENT CLEARINGHOUSE)	273	391	227	328

\* Includes those with undecided plans for employment or further education.

### Liberal Arts & Sciences - General Studies

This program is designed for students seeking a large measure of flexibility in selecting courses consistent with their individual needs and interests while simultaneously acquiring a general education foundation in the liberal arts and sciences. Students uncertain about their long-term educational and career plans often find that the General Studies program provides a valuable opportunity to explore and test their interests. Other students with special educational goals relating to either immediate employment upon graduation or further study toward a baccalaureate degree often consider this program to meet their needs.



## Liberal Arts & Sciences - General Studies

### 2013 COLLEGES

Rochester Institute of Technology

Southern New Hampshire University  
St. James Mercy Sch. of Radiological Sci.  
St. John Fisher College

SUNY Alfred State College  
SUNY Brockport

SUNY Buffalo State College

SUNY College of Env. Science & Forestry  
SUNY College of Technology at Canton  
SUNY Cortland

SUNY Empire State College

SUNY Erie Community College  
SUNY Finger Lakes Community College  
SUNY Fredonia  
SUNY Genesee Community Collage  
SUNY Geneseo

SUNY Morrisville

### PROGRAMS

(Not Disclosed); American Sign Language-English Interpreting (4); Biology; Biomedical Sciences (3); Business; Computer Science; Criminal Justice; Engineering; Illustration; Information Technology; Management Information Systems; Media Marketing; Medical Sonography; Music; New Media Design; Nutrition Management (3); Packaging Science (2); Photography; Photojournalism; Pre-Medicine  
Communications-Public Relations  
Radiologic Technology  
Accounting; Biology; Business & Corporate Finance; Business Administration; Business Management (2); Communications; Healthcare Management; Marketing; Nursing (14); Pharmacy; Physics-Mathematics; Political Science; Pre-Veterinary; Science; Sports Management  
Human Services Management; Nursing  
(Not Disclosed, 2); (Undecided); Accounting (2); Biology; Biology-Education; Business; Business Administration (2); Business Management; Childhood Development; Communications; Communications-Foreign Languages; Communications-Political Science; Criminal Justice (8); English (3); English-Women & Gender Studies; Environmental Science; Exercise Science (3); Fine Arts; Geology; Health Science (4); Health Studies; History (3); Journalism & Broadcasting; Marketing; Marketing-Graphic Design; Mathematics; Mathematics-Education; Meteorology; Nursing (4); Phlebotomy-Nursing; Physical Education (3); Political Science (2); Psychology (9); Psychology-Health Sciences; Recreation & Leisure Studies (2); Social Work (4); Social Work-Psychology; Sociology (2); Sociology-Women & Gender Studies; Women & Gender Studies  
Anthropology; Dietetics (2); Early Childhood Education; Fashion Design; Health & Wellness; Mechanical Engineering Technology; Psychology; Social Work; Speech-Language Pathology  
Wildlife Sciences  
Alternative & Renewable Energy Systems  
Business Economics; Conservation Biology; Childhood Education (2)  
Education; Health Science; Human Development; Human Resources-Labor Relations; Human Services (2); Sciences  
Dental Hygiene  
Nursing (2)  
Business Administration; English; Music Business  
Nursing (2); Physical Therapist Assistant  
American Studies; Biochemistry; Geology; History-Adolescent Education; History-Education; Political Science; Psychology (2)  
Hospitality-Event Planning-Business

# Liberal Arts & Sciences - General Studies

### 2013 COLLEGES

SUNY Oswego

SUNY Plattsburgh

SUNY Potsdam

SUNY University at Albany

SUNY University at Binghamton

SUNY University at Buffalo

University of Baltimore

University of Calgary

University of Colorado - Denver

University of Hartford

University of North Carolina

University of North Carolina at Wilmington

University of North Florida

University of Phoenix

University of Rochester

University of South Carolina

University of South Florida

Walden University

Wayne-Finger Lakes BOCES

West Virginia University

Worcester Polytechnic Institute

### PROGRAMS

Communications; Early Childhood Education; Philosophy;

Political Science

Art History

Business Administration; Geology

Chemistry; Psychology

Economics; History; Philosophy, Politics, & Law;

Psychology

(Not Disclosed); (Undecided); Architecture; Biology

(2); Business; Business Administration (2);

Child Psychology-Health & Human Services;

Communications; Ecology; Economics; Engineering;

Exercise Science; Library & Information Science;

Medical Technology; Occupational Therapy (2); Political

Science; Psychology (3); Sociology

Business Administration

Genetic Engineering

Education-English

Environmental Policies

Medical Imaging

Marine Biology

Psychology

Business-Marketing

Biology-Pre-Medicine; Computer Science; Nursing;

Psychology (2); Studio Arts

Hospitality-Tourism

Accounting

Psychology

Nursing (LPN)

Nursing

Biomedical Engineering

### 2013 EMPLOYERS

(Not Disclosed)

(Private Family)

(Self-Employed)

(Undisclosed Child Care Center)

(Undisclosed Law Firm)

A Cut Above Hair Design

A Plus Childcare, LLC

Abercrombie & Fitch

Acosta Sales & Marketing

ADT Security Services

Advantage Metalwork & Finishing

Aeropostale

### POSITIONS

(Not Disclosed, 17); Bouncer; Clerk; Flooring Mechanic;

Home Inspector; Machine Operator; Sales Associate;

Support Specialist

Home Health Aide; Nanny (4)

(Not Disclosed); LPN

Day Care Provider

Legal Secretary

Hairstylist

Owner/Director

Retail Associate

Sales Associate

Administrative Coordinator; Customer Service Specialist

Administrative Assistant

Sales Associate

# Liberal Arts & Sciences - General Studies

### 2013 EMPLOYERS

Agro-Care  
Alleson Athletic  
America's Best Contacts & Eyeglasses  
American Pool Supply, Inc.  
Anthony L. Jordan Health Center  
AnyPerk  
Aramark  
Arc of Monroe  
Auburn Armature, Inc.  
Barnes & Noble  
Barrel of Dolls  
Baywinde Senior Living  
Berry Plastics  
Beth Platt & Associates  
BJ's Wholesale Club  
Black & Blue Steak & Crab  
Boardroom Development Partners  
Braemar Country Club  
Brick House Tavern  
Buffalo Wild Wings  
Burgundy Basin Inn  
Canandaigua CrossFit  
Canandaigua Family YMCA  
Cappiello Electric  
Casco Security Systems  
Catering to You  
Catholic Charities Community Services  
  
CCCS of Rochester  
CEA International  
Cheesecake Factory, The  
Chili's Restaurant  
City of Rochester  
City of Rochester – Dept. of Social Services  
City of Rochester - Office of the Historian  
Concentrix  
Country Sweet Chicken & Ribs  
Creative Hands  
CVS Pharmacy  
Dairy Queen  
Dale Association, The  
Darden Restaurants  
Darien Lake Amusement Park  
Delphi Corporation  
Delta Sonic  
DialAmerica  
Distillery, The  
Dollar General  
Dorschel Automotive  
Dorschel Toyota  
Dunkin Donuts

### POSITIONS

Health & Nutrition Representative  
Purchasing Agent  
Optometric Technician  
(Not Disclosed)  
Data Coordinator; LPN  
Business Development Associate  
Chef  
Preparation & Utility Worker; Support Specialist  
Laborer  
Cashier  
Bartender  
Care Aide  
Forklift Operator  
Medical Billing Associate  
Stock Clerk  
Hostess  
Senior Vice President of Business Development  
Maintenance Worker  
Server  
Server  
Server/Manager  
Personal Trainer/Coach  
Personal Trainer/Coach  
Electrician  
Security Officer  
Caterer  
Community Support Specialist; Residential Support &  
Relief Counselor  
Financial Counseling Advisor  
Vice President  
Server  
Bartender  
Senior Recreation Assistant; Police Officer  
Case Aide  
Archival Processing Clerk  
Customer Service Specialist  
Server  
Cleaner  
Support Specialist  
Food Service Associate  
Personal Assistant  
Server (2)  
Ride Operator  
Manufacturing Engineer  
Level 2 Detail Technician  
Telemarketing Representative  
Line Cook; Server  
Cashier  
Greeter  
Sales Consultant  
Crew Member

# Liberal Arts & Sciences - General Studies

### 2013 EMPLOYERS

EarthLink Business  
Elder One  
Ellis Hospital  
Enterprise Rent-A-Car  
Epilepsy Foundation  
Epilepsy-Pralid, Inc  
Erie Construction  
Excellus Blue Cross/Blue Shield  
Expert Appliance  
Express  
Fairport Baptist Homes  
Finger Lakes DDSO  
Fireline 520, LLC  
First Choice Evaluations  
First Student  
Forever 21  
Fort, The  
Frank & Louie's Bayou Bar  
Frontier Communications  
GameStop  
Genesee Valley Club  
Goodwill of the Finger Lakes  
Greater Rochester International Airport  
Hamberger & Weiss  
Harris Corporation  
Hedges Nine Mile Point Restaurant  
Hedonist Artisan Chocolates  
Heritage Christian Services  
  
Herrema's Market  
Highland Hospital  
  
Hilton Hotels  
Hudson Liquor  
Hyatt Regency  
Inspire! Learning & Childcare  
Interim Healthcare  
Invisible Fence  
Jacksonville Humane Society  
Jewish Community Center  
Jewish Home of Rochester  
Jo-Ann Fabric & Craft Stores  
Journeys Shoe Store  
Kango Play Center  
LA Fitness  
Leary's Cleaners  
Liberty Mutual  
Liberty Resources  
Lifetime Assistance  
Macy's  
Maplewood Nursing Home

### POSITIONS

Team Lead  
Caregiver  
ER Physician Scribe  
(Not Disclosed)  
Residential Rehabilitator  
Patient Care Aide  
Sales Technician  
Customer Service Advocate; Enrollment Processor  
Driver  
Sales Associate  
Housekeeper  
Peace Officer  
Marketing Director  
Evaluations Specialist  
Bus Driver  
Sales Associate  
Server  
Bartender  
Computer Technician; Network Engineer  
Game Advisor (2)  
Building Services  
Crew Member; Customer Service Manager  
Agent  
Administrative Assistant  
Test Technician  
Kitchen Staff Member  
Manager  
Associate Director; Direct Support Professional; Resident  
Counselor  
Stock Clerk  
Business Associate; Medical Secretary; Medical  
Technician; Surgical Technician; Unit Secretary  
Front Desk Associate  
Cashier  
Greeter  
Day Care Aide  
Home Health Aide  
Marketing Assistant  
Off-Site Adaptation Assistant  
Lifeguard  
LPN  
Cashier  
Sales Associate  
Lead Teacher  
Child Care Worker  
Shift Supervisor  
Customer Service Specialist  
(Not Disclosed)  
Relief Staff Member  
Sales Clerk  
Certified Nurse's Assistant

# Liberal Arts & Sciences - General Studies

### 2013 EMPLOYERS

Mark's Pizzeria  
Mary Cariola Children's Center  
Massena Savings & Loan  
McDonalds  
Melting Pot, The  
Mercedes-Benz Manhattan, Inc.  
Mercury Radio Arts  
Miller Pharmacy  
Monroe 2-Orleans BOCES  
Monroe Community College  
Monroe Community College Association  
Monroe Community Hospital  
Monroe County  
Museum of Science & Industry  
Nazareth College  
New York Public Interest Research Group  
New York State Assembly  
Ogden Dental Group  
Old Navy  
Olive Garden  
Ontario County Human Resources Dept.  
Panera Bread  
Papa John's Pizza  
Penfield Central School District  
People, Inc.  
Pizza Hut  
Pontillo's Pizzeria  
Premier Parking  
Price Chopper  
Prime Steakhouse  
Pudgies Pizza  
Quaker Steak & Lube  
Radio Shack  
Red Robin Gourmet Burgers  
Reeds Jewelers  
Rite Aid Pharmacy  
Rizzo Group  
Roc City Furniture  
Rochester Childfirst Network  
Rochester City School District  
Rochester Drug Cooperative  
Rochester General Hospital  
  
Rochester Institute of Technology  
Rochester Red Wings  
Rochester Regional Health System  
  
Rochester Yacht Club  
Rohrbach Brewing Company

### POSITIONS

Customer Service Representative; Driver  
Child Habilitation Specialist  
Porter  
Services Manager  
Server  
Sales Associate  
Hospitality Specialist  
Pharmacy Technician  
Student Behavioral Assistant  
Office Assistant  
(Not Disclosed)  
Certified Nurse's Assistant  
Health Worker; Sheriff's Deputy (2)  
Payroll Coordinator  
Student Aide  
Field Representative  
Legislative Assistant  
Office Assistant  
Sales Associate  
Cook  
Office Specialist  
Associate; Catering Coordinator  
Driver  
Swim Coach  
Direct Care Associate; Respite Worker  
Server  
Manager  
Valet  
Cashier  
Server  
Pizza Maker  
Server  
Sales Associate  
Cook  
Sales Associate  
Shift Supervisor  
Maintenance Worker  
Business Owner  
Day Care Worker  
(Not Disclosed); Clerical Support Specialist; Office Clerk II  
Warehouse Worker  
Emergency Room Patient Transporter; Licensed  
Esthetician; Patient Care Technician (2); Patient  
Care Technician Senior (2); Radiology Assistant;  
Technologist Assistant  
Teacher's Assistant  
Sales Associate  
Day Care Provider; Home Health Aide; IPA Navigator; LPN;  
Medical Technician; Patient Care Technician  
Server  
Busser

# Liberal Arts & Sciences - General Studies

### 2013 EMPLOYERS

Romano's Macaroni Grill  
RTG Dental Lab  
Rush-Henrietta Central School District  
Sakura Home Restaurant  
Sapori Café  
Save A Lot Grocery Store  
Savers  
Scott's Hallmark  
Seabreeze Amusement Park  
Sears  
Securitas USA  
Shapiro & Duncan  
Shirt Factory Café  
Shooters  
Spa Elan  
Springbrook  
St. Ann's Community  
St. John Fisher College  
St. John's Home  
State Farm Insurance  
Sticky Lips BBQ  
Storybook Childcare  
Strong National Museum of Play  
Summit Knolls Homeowners Association  
SUNY Buffalo State EOP  
SUNY Geneseo Campus Auxiliary Services  
SUNY University at Buffalo  
Sutherland Global Services  
Swan's Market  
Switzerland Inn  
Taco Bell  
Target  
  
tBones Steakhouse  
Tomra NY Recycling  
Tony D's  
Tops Friendly Markets  
  
Town of Henrietta  
  
Town of Perinton  
Town of Rush Recreation Department  
U.S. Army  
U.S. Coast Guard  
U.S. Navy  
Ulta  
United Pensacola Refinery  
United Radio Service  
Unity at Home

### POSITIONS

Server  
Dental Technician  
Teacher's Aide / After School Staff Member  
Server  
Barista  
Shelf Stocker  
Community Donation Ambassador  
Manager  
Night Manager  
Customer Service Representative  
Security Guard Supervisor; Security Officer  
Human Resources Assistant  
Owner  
Bartender  
Licensed Esthetician  
Teacher's Assistant  
Certified Nurse's Assistant; Server; Universal Worker  
Librarian  
LPN; Nurse  
Sales Representative  
Server  
Lead Toddler Teacher  
Food Service Host  
Gardener  
Peer Tutor  
Associate  
Fundraiser; Tutor/Paraprofessional  
Consultant; Legal Assistant  
Server  
Server  
Food Service Champion  
(Not Disclosed); Photo Lab Technician; Sales Floor Team Member  
Server  
Redemptionist  
Server  
Cart Associate; Cashier; Cashier/Pharmacy Technician; Produce Clerk  
Deputy Town Clerk/Receiver of Taxes; Recreation Coordinator Assistant; Recreation Department Staff Member  
Laborer  
Counselor  
ROTC Member  
Seaman Recruit  
(Not Disclosed)  
Beauty Advisor  
Cashier/Pump Attendant  
Technician Level 2  
Home Health Aide

# Liberal Arts & Sciences - General Studies

### 2013 EMPLOYERS

Unity Hospital  
University of North Carolina at Wilmington  
University of Rochester  
UPS  
UR Medicine

Verizon Wireless  
Victoria's Secret  
Villages at Unity, The  
Visiting Nurse Service  
Von Maur  
VWR International  
Walmart  
Waste Management  
Wayne-Finger Lakes BOCES  
Wegmans

Wesley Community  
White Buck Inn  
Women's Gynecology & Childbirth Associates  
Xerox  
YMCA Buffalo Niagara  
YMCA of Greater Rochester

### POSITIONS

Certified Nurse's Assistant; Patient Care Technician  
Research Technician  
Lead Trainer; Peace Officer  
(Not Disclosed)  
Anesthesiology Technician; Clinical Technologist;  
Credentialing Specialist; Laboratory Technician II;  
Patient Care Technician; Patient Unit Secretary;  
Pharmac Technician; IT Production Control  
Coordinator; RN (2)  
Health & Wellness Coach  
Sales Associate (2)  
Activities Assistant  
Home Health Aide  
Sales Associate  
Bid & Quote Specialist  
Sales Associate  
Recycler  
Teacher's Assistant  
(Not Disclosed, 3); Cashier (2); Clerk; Customer Service  
Representative (2); Customer Service Specialist (2);  
Dairy Associate; Pharmacy Technician (3); Prep Cook;  
Service Delivery Technician; Service Information  
Specialist; Service Team Member; Stock Clerk;  
Warehouse Shipping Clerk  
Certified Nurse's Assistant  
Bartender  
Medical Secretary  
Store Clerk Handler  
School Age Child Care Associate  
Program Coordinator; Wellness Coach





### Liberal Arts & Sciences - Science

#### 2013 COLLEGES

Cornell University  
Massachusetts College of Pharmacy  
Monroe Community College  
Rochester Institute of Technology  
St. John Fisher College  
SUNY College of Env. Science & Forestry  
SUNY Geneseo  
SUNY Potsdam  
SUNY University at Binghamton  
SUNY University at Buffalo  
University of Chicago  
University of Pittsburgh  
University of Rochester

#### PROGRAMS

Biological Sciences (2)  
Pharmacy  
Non-Matriculated  
Biochemistry; Molecular Bioscience & Biotechnology  
Pharmacy (2)  
Environmental Biology  
Biology-Pre-Medicine; Chemistry; Geology  
Geology  
Integrative Neuroscience  
Biology; Pharmacy  
Pharmacy  
Pharmacy  
Biochemistry; Biology

#### 2013 EMPLOYERS

(Not Disclosed)  
Cornell University  
CVS Pharmacy  
Diffinity Genomics  
Fairport Baptist Homes  
Kmart  
Monroe Community College  
Romano's Macaroni Grill  
St. John's Home  
SUNY University at Binghamton  
Tops Friendly Markets  
UR Medicine  
Walgreens

#### POSITIONS

(Not Disclosed)  
Lab Assistant & Library Aide  
Pharmacy Technician Intern  
Quality Control/Production Clerk  
Certified Nurse's Assistant  
Customer Service Representative  
Tutor  
Server  
Certified Nurse's Assistant  
Lab Assistant  
(Not Disclosed)  
Lab Technician  
Intern

## TRANSFER CURRICULUM - A.S.

### Liberal Arts & Sciences - Science

	YEAR OF GRADUATION			
	2013	2012	2011	2010
NUMBER RECEIVING DEGREES	37	25	23	27
NUMBER RESPONDING TO SURVEY	23	15	15	16
NUMBER CONTINUING THEIR EDUCATION FULL-TIME	20	13	13	12
NUMBER EMPLOYED FULL-TIME	2	2	2	1
NUMBER CONTINUING THEIR EDUCATION / EMPLOYED PART-TIME	0	0	0	2
NUMBER AVAILABLE FOR EMPLOYMENT	1	0	0	1
NUMBER OTHER*	0	0	0	0
NUMBER NON-RESPONDENTS WHO TRANSFERRED (DATA PROVIDED BY THE NATIONAL STUDENT CLEARINGHOUSE)	11	9	6	11

\* Includes those with undecided plans for employment or further education.

### Liberal Arts & Sciences - Science

The program in the Liberal Arts & Sciences - Science provides the first two years of preparation for students who plan to transfer and earn a baccalaureate degree in biology, chemistry, environmental science, geosciences, physics, or another career area such as medicine or pharmacy for which good science preparation is needed. The various concentrations within this program identify course sequences that facilitate transfer to upper division colleges and universities.

# Mathematics

### **2013 COLLEGES**

Monroe Community College  
Rochester Institute of Technology  
SUNY Geneseo  
University of Miami

### **PROGRAMS**

Liberal Arts  
Applied Mathematics  
Mathematics  
Civil Engineering

### **2013 EMPLOYERS**

Save A Lot Grocery Store  
University of Miami  
U of R Laboratory for Laser Energetics

### **POSITIONS**

Stock Clerk  
Research Assistant  
Electronics Technician

## TRANSFER CURRICULUM - A.S.

### Mathematics

	YEAR OF GRADUATION			
	2013	2012	2011	2010
NUMBER RECEIVING DEGREES	15	10	5	•
NUMBER RESPONDING TO SURVEY	5	9	3	•
NUMBER CONTINUING THEIR EDUCATION FULL-TIME	4	8	3	•
NUMBER EMPLOYED FULL-TIME	1	0	0	•
NUMBER CONTINUING THEIR EDUCATION / EMPLOYED PART-TIME	0	0	0	•
NUMBER AVAILABLE FOR EMPLOYMENT	0	1	0	•
NUMBER OTHER*	0	0	0	•
NUMBER NON-RESPONDENTS WHO TRANSFERRED (DATA PROVIDED BY THE NATIONAL STUDENT CLEARINGHOUSE)	8	1	2	•

• First degree awarded in 2011.

\* Includes those with undecided plans for employment or further education.

### Mathematics

Students who plan to transfer and earn a baccalaureate degree with a major in mathematics for preprofessional preparation for careers as mathematics teachers, industrial mathematicians, computer scientists, professional actuaries and the like may wish to earn the A.S. degree in Mathematics.

## Office Administration & Management

### **2013 COLLEGES**

### **PROGRAMS**

### **2013 EMPLOYERS**

City of Rochester

### **POSITIONS**

Clerk III Typist

## TRANSFER CURRICULUM - A.S.

### Office Administration & Management

	YEAR OF GRADUATION			
	2013	2012	2011	2010
NUMBER RECEIVING DEGREES	1	1	1	2
NUMBER RESPONDING TO SURVEY	1	0	0	2
NUMBER CONTINUING THEIR EDUCATION FULL-TIME	0	N.A.	N.A.	1
NUMBER EMPLOYED FULL-TIME	0	N.A.	N.A.	1
NUMBER CONTINUING THEIR EDUCATION / EMPLOYED PART-TIME	1	N.A.	N.A.	0
NUMBER AVAILABLE FOR EMPLOYMENT	0	N.A.	N.A.	0
NUMBER OTHER*	0	N.A.	N.A.	0
NUMBER NON-RESPONDENTS WHO TRANSFERRED (DATA PROVIDED BY THE NATIONAL STUDENT CLEARINGHOUSE)	0	1	N.A.	0

*\*Includes those with undecided plans for employment or further education*

### Office Administration & Management

The Office Technology degree provides office administration training with in-depth computer software skills. This degree supports the certification programs of the IAAP (International Association of Administrative Professionals).

### Performing Arts - Music

#### **2013 COLLEGES**

SUNY Fredonia  
University of Rochester

#### **PROGRAMS**

Music Composition  
Music

#### **2013 EMPLOYERS**

Pizza Paul's  
Visionworks

#### **POSITIONS**

Manager  
Contact Lens Technician

## TRANSFER CURRICULUM - A.S.

### Performing Arts - Music

	YEAR OF GRADUATION			
	2013	2012	2011	2010
NUMBER RECEIVING DEGREES	6	10	8	3
NUMBER RESPONDING TO SURVEY	3	6	4	1
NUMBER CONTINUING THEIR EDUCATION FULL-TIME	1	2	3	0
NUMBER EMPLOYED FULL-TIME	2	2	1	0
NUMBER CONTINUING THEIR EDUCATION / EMPLOYED PART-TIME	0	1	0	1
NUMBER AVAILABLE FOR EMPLOYMENT	0	0	0	0
NUMBER OTHER*	0	1	0	0
NUMBER NON-RESPONDENTS WHO TRANSFERRED (DATA PROVIDED BY THE NATIONAL STUDENT CLEARINGHOUSE)	1	3	2	2

\* Includes those with undecided plans for employment or further education.

### Performing Arts - Music

This program is designed for students who are planning to continue their education in music at a four-year college.



# Physical Education Studies

### **2013 COLLEGES**

SUNY Brockport

### **PROGRAMS**

Exercise Science (2); Kinesiology; Physical Education (2);  
Sports Management

### **2013 EMPLOYERS**

Fleet Feet  
Marshalls  
Wayne County Water & Sewer Authority  
YMCA of Greater Rochester

### **POSITIONS**

Assistant Manager  
Cashier  
Construction Worker  
Gym Specialist

## Physical Education Studies

	YEAR OF GRADUATION			
	2013	2012	2011	2010
NUMBER RECEIVING DEGREES	13	15	12	24
NUMBER RESPONDING TO SURVEY	7	7	6	20
NUMBER CONTINUING THEIR EDUCATION FULL-TIME	6	6	6	19
NUMBER EMPLOYED FULL-TIME	1	1	0	0
NUMBER CONTINUING THEIR EDUCATION / EMPLOYED PART-TIME	0	0	0	1
NUMBER AVAILABLE FOR EMPLOYMENT	0	0	0	0
NUMBER OTHER*	0	0	0	0
NUMBER NON-RESPONDENTS WHO TRANSFERRED (DATA PROVIDED BY THE NATIONAL STUDENT CLEARINGHOUSE)	4	5	3	4

\* Includes those with undecided plans for employment or further education.

## Physical Education Studies

This program is designed to prepare students to transfer to a four-year college that offers majors in physical education, physical studies, sports studies, or a related area. Students may choose to specialize and seek a career in fitness, sports rehabilitation, education, business, or other related opportunity.

# Public Relations

### **2013 COLLEGES**

North Carolina State University  
SUNY Brockport  
SUNY Empire State College  
SUNY Geneseo

### **PROGRAMS**

Communications-Public Relations  
Communications  
Entertainment Management  
Communications

### **2013 EMPLOYERS**

Delta Sonic  
First American Equipment Finance  
Guida's Pizzeria & Catering

### **POSITIONS**

Advanced Cashier  
Sales Office Manager  
Line Cook

## TRANSFER CURRICULUM - A.S.

### Public Relations

	YEAR OF GRADUATION			
	2013	2012	2011	2010
NUMBER RECEIVING DEGREES	10	8	6	6
NUMBER RESPONDING TO SURVEY	5	5	3	3
NUMBER CONTINUING THEIR EDUCATION FULL-TIME	4	4	0	3
NUMBER EMPLOYED FULL-TIME	1	0	2	0
NUMBER CONTINUING THEIR EDUCATION / EMPLOYED PART-TIME	0	0	0	0
NUMBER AVAILABLE FOR EMPLOYMENT	0	1	0	0
NUMBER OTHER*	0	0	1	0
NUMBER NON-RESPONDENTS WHO TRANSFERRED (DATA PROVIDED BY THE NATIONAL STUDENT CLEARINGHOUSE)	2	3	1	3

*\*Includes those with undecided plans for employment or further education*

### Public Relations

The Public Relations program is designed to prepare students for transfer to a four-year college or university that offers programs in public relations, communications, and mass media. The curriculum provides a foundation in liberal arts and a background in communication theory, media writing, and public relations. The program will enable students to better understand the role of public relations today in business, government, education and non-profit organizations.

## Theatre Arts

### **2013 COLLEGES**

### **PROGRAMS**

### **2013 EMPLOYERS**

### **POSITIONS**

## TRANSFER CURRICULUM - A.S.

### Theatre Arts

	YEAR OF GRADUATION			
	2013	2012	2011	2010
NUMBER RECEIVING DEGREES	1	•	•	•
NUMBER RESPONDING TO SURVEY	0	•	•	•
NUMBER CONTINUING THEIR EDUCATION FULL-TIME	0	•	•	•
NUMBER EMPLOYED FULL-TIME	0	•	•	•
NUMBER CONTINUING THEIR EDUCATION / EMPLOYED PART-TIME	0	•	•	•
NUMBER AVAILABLE FOR EMPLOYMENT	0	•	•	•
NUMBER OTHER*	0	•	•	•
NUMBER NON-RESPONDENTS WHO TRANSFERRED (DATA PROVIDED BY THE NATIONAL STUDENT CLEARINGHOUSE)	0	•	•	•

\*Includes those with undecided plans for employment or further education  
 • First degree awarded in 2013

### Theatre Arts

There are two options for the Theatre Arts program:

**Performance Option:** This program of study is designed for students who plan to transfer and earn the baccalaureate degree with a major in theatrical performance or technical theatre. The program is balanced between courses providing general theatre knowledge and those designed to develop a particular theatrical skill. A variety of theatrical shows at the college provides students with opportunities to participate in the performance and production of a theatrical show for a public audience.

**Technical Theatre:** This program of study is designed for students who plan to transfer and earn the baccalaureate degree with a major in theatrical performance or technical theatre. The program is balanced between courses providing general theatre knowledge and those designed to develop a particular theatrical skill. A variety of theatrical shows at the college provides students with opportunities to participate in the performance and production of a theatrical show for a public audience.



## TRANSFER CURRICULUM - A.A.

### Comparison Summary: Transfer Curriculum - A.A.

	YEAR OF GRADUATION			
	2013	2012	2011	2010
NUMBER RECEIVING DEGREES	98	102	134	131
NUMBER RESPONDING TO SURVEY	64	46	81	86
RESPONSE RATE	65%	45%	60%	66%
NUMBER CONTINUING THEIR EDUCATION FULL-TIME	46	36	64	66
NUMBER EMPLOYED FULL-TIME	11	2	6	9
NUMBER CONTINUING THEIR EDUCATION / EMPLOYED PART-TIME	3	6	7	10
NUMBER AVAILABLE FOR EMPLOYMENT	2	2	0	0
NUMBER OTHER*	2	0	4	1
NUMBER NON-RESPONDENTS WHO TRANSFERRED (DATA PROVIDED BY THE NATIONAL STUDENT CLEARINGHOUSE)	23	43	37	44

\* Includes those with undecided plans for employment or further education.



# Liberal Arts & Sciences - Adolescence Education

### **2013 COLLEGES**

Nazareth College  
St. John Fisher College  
SUNY Brockport  
  
SUNY Geneseo

### **PROGRAMS**

Inclusive Adolescent Education  
Pre-Pharmacy  
Adolescent Education or Library Science; Education (2);  
Graphic Design; History; History-Education  
Education (2); Secondary Education-Spanish

### **2013 EMPLOYERS**

(Not Disclosed)  
Palmer's Direct to You Market  
Quickwork Co.  
Tops Friendly Markets  
Town of Chili Public Library  
Verizon Wireless

### **POSITIONS**

(Not Disclosed, 2)  
Night Sorter  
Customer Relations Representative  
Pharmacy Technician  
Page  
Customer Service Representative

### Liberal Arts & Sciences - Adolescence Education

	YEAR OF GRADUATION			
	2013	2012	2011	2010
NUMBER RECEIVING DEGREES	19	24	43	41
NUMBER RESPONDING TO SURVEY	13	15	27	29
NUMBER CONTINUING THEIR EDUCATION FULL-TIME	11	12	22	21
NUMBER EMPLOYED FULL-TIME	2	2	1	3
NUMBER CONTINUING THEIR EDUCATION / EMPLOYED PART-TIME	0	0	3	5
NUMBER AVAILABLE FOR EMPLOYMENT	0	1	0	0
NUMBER OTHER*	0	0	1	0
NUMBER NON-RESPONDENTS WHO TRANSFERRED (DATA PROVIDED BY THE NATIONAL STUDENT CLEARINGHOUSE)	4	6	12	12

\* Includes those with undecided plans for employment or further education.

### Liberal Arts & Sciences - Adolescence Education

This program is designed to support and encourage progress toward a baccalaureate degree in NYS teacher certification for students interested in pursuing teaching as a career. The Liberal Arts & Sciences Adolescence Education degree is specifically for students interested in teaching grades 7 through 12.

This course of study provides students with the opportunity to experience the basic fundamentals of teaching in the classroom, while studying various integral aspects of the profession. It also provides students with a balance of coursework between completing Education classes, General Education requirements, and pursuing courses within their selected academic major.

MCC students also have the opportunity to apply for membership into Pi Lambda Theta, the International Honor Society and Professional Association in Education. MCC is the first community college in the nation invited to join this honor society.

# Liberal Arts & Sciences - Childhood Education

### 2013 COLLEGES

College of Staten Island  
Keuka College  
Nazareth College

Roberts Wesleyan College  
SUNY Brockport

### PROGRAMS

Education  
Special Education  
Business Administration; Childhood Education (2); English-  
Inclusive Childhood Education; Inclusive Education;  
Psychology-Inclusive Childhood Education  
Childhood Education  
Arts for Children; Education (3); Management;  
Mathematics (2); Special Education

### 2013 EMPLOYERS

(Not Disclosed)  
(Undisclosed Child Care Center)  
City of Rochester  
Dr. Graniero Office  
Home Depot  
Horizons at Monroe Community College  
Jump Club  
Kohl's  
Michaels  
Monroe Community College Child Care Center  
St. John's Child Care  
Wegmans  
Westfall Academy

### POSITIONS

(Not Disclosed)  
Day Care Worker  
Firefighter  
Optometric Technician  
Cashier  
Teacher's Assistant  
Party Host  
Sales Associate  
Floral Designer  
Caregiver  
Head Teacher  
Bakery Worker; Customer Service Representative  
Associate Teacher

## TRANSFER CURRICULUM - A.A.

### Liberal Arts & Sciences - Childhood Education

	YEAR OF GRADUATION			
	2013	2012	2011	2010
NUMBER RECEIVING DEGREES	32	39	58	53
NUMBER RESPONDING TO SURVEY	24	18	35	30
NUMBER CONTINUING THEIR EDUCATION FULL-TIME	16	15	30	25
NUMBER EMPLOYED FULL-TIME	6	0	2	3
NUMBER CONTINUING THEIR EDUCATION / EMPLOYED PART-TIME	0	3	2	2
NUMBER AVAILABLE FOR EMPLOYMENT	0	0	0	0
NUMBER OTHER*	2	0	1	0
NUMBER NON-RESPONDENTS WHO TRANSFERRED (DATA PROVIDED BY THE NATIONAL STUDENT CLEARINGHOUSE)	6	15	16	22

\* Includes those with undecided plans for employment or further education.

### Liberal Arts & Sciences - Childhood Education

This program is designed to support and encourage progress toward a baccalaureate degree in NYS teacher certification for students interested in pursuing teaching as a career. The Liberal Arts & Sciences Childhood Education degree is specifically for students interested in teaching grades one through six.

This course of study provides students with the opportunity to experience the basic fundamentals of teaching in the classroom, while studying various integral aspects of the profession. It also provides students with a balance of coursework between completing Education classes, General Education requirements, and pursuing courses within the students' selected academic major.

MCC students also have the opportunity to apply for membership into Pi Lambda Theta, the International Honor Society and Professional Association in Education. MCC is the first community college in the nation invited to join this honor society.

### Liberal Arts & Sciences - Early Care

#### **2013 COLLEGES**

Grand Canyon University  
Medaille College  
St. John Fisher College  
SUNY Brockport  
SUNY Geneseo  
SUNY Oswego

#### **PROGRAMS**

Organizational Leadership  
Early Childhood Education  
Childhood Education-Special Education  
Early Childhood Education; Mathematics  
Childhood Education-Special Education  
Fine Arts

#### **2013 EMPLOYERS**

(Not Disclosed)  
(Undisclosed Child Care Center)  
ABC Head Start  
ComForcare Senior Services  
Storybook Childcare  
Wegmans

#### **POSITIONS**

(Not Disclosed, 2)  
Day Care Provider; Day Care Provider/Owner  
(Not Disclosed)  
Director of Operations  
School-Age Teacher  
Customer Service Representative

## TRANSFER CURRICULUM - A.A.

### Liberal Arts & Sciences - Early Care

	YEAR OF GRADUATION			
	2013	2012	2011	2010
NUMBER RECEIVING DEGREES	17	7	13	11
NUMBER RESPONDING TO SURVEY	10	0	7	8
NUMBER CONTINUING THEIR EDUCATION FULL-TIME	7	N.A.	2	4
NUMBER EMPLOYED FULL-TIME	3	N.A.	2	3
NUMBER CONTINUING THEIR EDUCATION / EMPLOYED PART-TIME	0	N.A.	2	1
NUMBER AVAILABLE FOR EMPLOYMENT	0	N.A.	0	0
NUMBER OTHER*	0	N.A.	1	0
NUMBER NON-RESPONDENTS WHO TRANSFERRED (DATA PROVIDED BY THE NATIONAL STUDENT CLEARINGHOUSE)	6	7	3	3

\* Includes those with undecided plans for employment or further education.

### Liberal Arts & Sciences - Early Care

This program is designed to support and encourage progress toward a baccalaureate degree in NYS teacher certification for students interested in pursuing teaching as a career. The degree is specifically for students interested in teaching infants through second grade.

This course of study provides students with the opportunity to experience the basic fundamentals of teaching in the classroom, while studying various integral aspects of the profession. It also provides students with a balance of coursework between completing Education classes, General Education requirements, and pursuing courses within the students' selected academic major.

MCC students also have the opportunity to apply for membership into Pi Lambda Theta, the International Honor Society and Professional Association in Education. MCC is the first community college in the nation invited to join this honor society.

# Liberal Arts & Sciences - Humanities & Social Sciences

### **2013 COLLEGES**

Keuka College  
Nazareth College  
North Carolina A&T University  
Rochester Institute of Technology  
SUNY Brockport  
SUNY Buffalo State College  
SUNY University at Albany  
University of Rochester  
University of Tennessee

### **PROGRAMS**

Social Work  
Social Work  
English  
American Sign Language-English Interpreting  
History (2); Psychology (2)  
Criminal Justice  
Psychology  
History-Religion  
Communications

### **2013 EMPLOYERS**

(Not Disclosed)  
(Private Family)  
Barnes & Noble  
Bath & Body Works  
Critics Restaurant  
Home Depot  
Mark's Pizzeria  
New York State Department of Labor  
Woodcliff Salon & Spa

### **POSITIONS**

(Not Disclosed, 2)  
Nanny  
Sales Associate  
Cashier  
Server  
Cashier  
Server  
Senior Employment Security Clerk  
Cosmetologist

## TRANSFER CURRICULUM - A.A.

### Liberal Arts & Sciences - Humanities & Social Sciences

	YEAR OF GRADUATION			
	2013	2012	2011	2010
NUMBER RECEIVING DEGREES	30	32	20	26
NUMBER RESPONDING TO SURVEY	17	13	12	19
NUMBER CONTINUING THEIR EDUCATION FULL-TIME	12	9	10	16
NUMBER EMPLOYED FULL-TIME	0	0	1	0
NUMBER CONTINUING THEIR EDUCATION / EMPLOYED PART-TIME	3	3	0	2
NUMBER AVAILABLE FOR EMPLOYMENT	2	1	0	0
NUMBER OTHER*	0	0	1	1
NUMBER NON-RESPONDENTS WHO TRANSFERRED (DATA PROVIDED BY THE NATIONAL STUDENT CLEARINGHOUSE)	7	15	6	7

\* Includes those with undecided plans for employment or further education.

### Liberal Arts & Sciences - Humanities & Social Science

This program provides the ten SUNY General Education Knowledge and Skills area desirable for transferring to a SUNY four-year college or university for a liberal arts major.

This degree typically interests students who are planning on earning a Bachelor of Arts or Bachelor of Sciences degree in disciplines such as: English, philosophy, anthropology, history, political science, sociology, and psychology.





## CAREER CURRICULUM - A.A.S.

### Comparison Summary: Career Curriculum - A.A.S.

	YEAR OF GRADUATION			
	2013	2012	2011	2010
NUMBER RECEIVING DEGREES	686	758	749	647
NUMBER RESPONDING TO SURVEY	354	428	513	439
RESPONSE RATE	52%	56%	69%	68%
TOTAL NUMBER EMPLOYED FULL-TIME	224	259	307	263
NUMBER AND PERCENT OF TOTAL EMPLOYED FULL-TIME IN FIELD	203 (91%)	219 (85%)	249 (81%)	224 (51%)
NUMBER CONTINUING THEIR EDUCATION FULL-TIME	54	67	85	79
NUMBER EMPLOYED / CONTINUING THEIR EDUCATION PART-TIME	46	68	77	63
NUMBER AVAILABLE FOR EMPLOYMENT	22	24	32	24
NUMBER OTHER*	8	10	12	10
NUMBER NON-RESPONDENTS WHO TRANSFERRED (DATA PROVIDED BY THE NATIONAL STUDENT CLEARINGHOUSE)	59	98	52	189

\* Includes those with undecided plans for employment or furthering education.

# Accounting: General

### 2013 EMPLOYERS

(Not Disclosed)  
BJ's Wholesale Club  
City of Rochester  
Employer Solutions, Inc.  
Fairport Savings Bank  
JK Findings  
Kinderiffic Park Place Daycare Center  
Litelab Corporation  
Monro Muffler Brake  
Monroe Community College  
Monroe County  
Spex Precision  
State Farm Insurance  
StoreCrafters, Inc.  
Sutherland Global Services  
Wegmans  
West Irondequoit School District  
Windsor Technology

### POSITIONS

Data Analyst  
Accounts Receivable Coordinator  
Accountant  
Tax Preparer  
Assistant Vice President  
Invoicing Clerk  
Chief Financial Officer  
Staff Accountant  
Accounts Payable Assistant  
Technical Assistant  
Assistant Supervisor of Claims & Accounts  
Accountant  
Property & Casualty Representative  
Accounts Payable Clerk  
Sales Associate  
Meat Department Associate  
Library Clerk  
Controller

### 2013 COLLEGES

Roberts Wesleyan College  
Rochester Institute of Technology  
St. John Fisher College  
SUNY Brockport  
SUNY University at Buffalo

### PROGRAMS

Organizational Management  
Accounting  
Accounting  
Accounting (2)  
Accounting

## CAREER CURRICULUM - A.A.S.

### Accounting: General

	YEAR OF GRADUATION			
	2013	2012	2011	2010
NUMBER RECEIVING DEGREES	33	26	30	27
NUMBER RESPONDING TO SURVEY	21	18	19	20
TOTAL EMPLOYED FULL-TIME	14	11	13	11
NUMBER AND PERCENT OF TOTAL EMPLOYED FULL-TIME IN FIELD	13 (93%)	10 (91%)	8 (62%)	9 (82%)
NUMBER REPORTING SALARIES	12	10	6	6
MEDIAN SALARY	\$40,467	\$29,500	\$30,000	\$28,560
SALARY RANGE	\$20,000 to 70,000	\$10,800 to 35,000	\$18,000 to 34,000	\$18,000 to 37,500
NUMBER CONTINUING THEIR EDUCATION FULL-TIME	2	3	1	2
NUMBER EMPLOYED / CONTINUING THEIR EDUCATION PART-TIME	3	1	4	2
NUMBER AVAILABLE FOR EMPLOYMENT	1	3	1	4
NUMBER OTHER*	1	0	0	1
NUMBER NON-RESPONDENTS WHO TRANSFERRED (DATA PROVIDED BY THE NATIONAL STUDENT CLEARINGHOUSE)	2	2	2	6

\* Includes those with undecided plans for employment or further education.  
 \*\*Not included if fewer than five respondents reported salaries for full-time employment in their field.

### Accounting: General

This degree provides students with a strong foundation in management accounting principles, including cost accounting and taxation. Graduates are usually responsible for keeping records of daily financial transactions, making journal entries, and creating balance sheets and reports. Advanced education combined with experience enables individuals to move into more responsible positions such as accountants and auditors, and to specialize in areas such as taxation, investments, costs, budgeting, or internal auditing.

# Apprentice Training - Automotive

### 2013 EMPLOYERS

(Not Disclosed)  
(Undisclosed Care Dealership)  
American Rock Salt  
Doan Dodge  
Dorschel Toyota  
Doyle Chevrolet  
Ideal Chevrolet  
JME Automotive  
Monroe County Dept. of Environmental Svcs.  
New York State Department of Transportation  
O'Connor Chevrolet

### POSITIONS

(Not Disclosed)  
Automotive Technician  
Maintenance Worker  
Automotive Technician  
Service Advisor  
Automotive Technician  
Lube Technician  
Mechanic  
Automotive Mechanic  
Mechanic  
Automotive Technician

### 2013 COLLEGES

(Undecided)  
Monroe Community College  
Monroe Community College  
Pennsylvania College of Technology

### PROGRAMS

Substance Abuse & Alcohol Treatment  
HVAC  
Liberal Arts  
Automotive Business Management

## Apprentice Training - Automotive

	YEAR OF GRADUATION			
	2013	2012	2011	2010
NUMBER RECEIVING DEGREES	37	41	34	23
NUMBER RESPONDING TO SURVEY	14	20	25	14
TOTAL EMPLOYED FULL-TIME	11	14	21	12
NUMBER AND PERCENT OF TOTAL EMPLOYED FULL-TIME IN FIELD	10 (91%)	13 (93%)	86 (18%)	10 (83%)
NUMBER REPORTING SALARIES	9	6	11	8
MEDIAN SALARY	\$30,000	\$25,000	\$25,000	\$22,900
SALARY RANGE	\$20,800 to 64,480	\$18,000 to 35,000	\$17,000 to 75,000	\$10,000 to 30,000
NUMBER CONTINUING THEIR EDUCATION FULL-TIME	2	0	2	0
NUMBER EMPLOYED / CONTINUING THEIR EDUCATION PART-TIME	0	3	2	2
NUMBER AVAILABLE FOR EMPLOYMENT	1	3	0	0
NUMBER OTHER*	0	0	0	0
NUMBER NON-RESPONDENTS WHO TRANSFERRED (DATA PROVIDED BY THE NATIONAL STUDENT CLEARINGHOUSE)	2	4	2	0

\* Includes those with undecided plans for employment or further education.

## Apprentice Training - Automotive

The Apprentice Training - Automotive program combines on-the-job training with classroom instruction to prepare students for careers as automotive technicians. As the automotive industry advances with sophisticated technology and responds to the needs and demands of consumerism and legislation, employment opportunities are increasing for technicians, that is, technicians who are more highly skilled than mechanics of the past. There are also opportunities in management for those who are interested.

# Apprentice Training: Machine Trades

### **2013 EMPLOYERS**

CAR Engineering & Manufacturing, Inc.  
Monroe Community College

### **POSITIONS**

CNC Mills Group Leader  
Lecturer

### **2013 COLLEGES**

### **PROGRAMS**

## Apprentice Training: Machine Trades

	YEAR OF GRADUATION			
	2013	2012	2011	2010
NUMBER RECEIVING DEGREES	3	1	1	2
NUMBER RESPONDING TO SURVEY	2	1	0	1
TOTAL EMPLOYED FULL-TIME	2	1	N.A.	1
NUMBER AND PERCENT OF TOTAL EMPLOYED FULL-TIME IN FIELD	2 (100%)	1 (100%)	N.A.	1 (100%)
NUMBER REPORTING SALARIES	1	0	N.A.	**
MEDIAN SALARY	N.A.	N.A.	N.A.	**
SALARY RANGE	N.A.	N.A.	N.A.	**
NUMBER CONTINUING THEIR EDUCATION FULL-TIME	0	0	N.A.	0
NUMBER EMPLOYED / CONTINUING THEIR EDUCATION PART-TIME	0	0	N.A.	0
NUMBER AVAILABLE FOR EMPLOYMENT	0	0	N.A.	0
NUMBER OTHER*	0	0	N.A.	0
NUMBER NON-RESPONDENTS WHO TRANSFERRED (DATA PROVIDED BY THE NATIONAL STUDENT CLEARINGHOUSE)	0	0	N.A.	0

N.A. - Information Not Available.

\* Includes those with undecided plans for employment or further education.

\*\*Not included if fewer than five respondents reported salaries for full-time employment in their field.

## Apprentice Training: Machine Trades

This program compliments apprentice training by adding theoretical learning in the technologies to the applied learning received on the job. To be eligible for this program, students must be an apprentice or journeyman in the machine trades under the auspices of an appropriate apprenticeship training program.



# Biotechnology

### **2013 EMPLOYERS**

(Self-Employed)  
Bartenders Unlimited  
CVS Pharmacy  
Tops Friendly Markets  
Val Tech Holdings, Inc.  
Whole Foods Market

### **POSITIONS**

(Not Disclosed)  
Barback  
Pharmacy Technician  
(Not Disclosed)  
Lab Technician  
Baker Team Member

### **2013 COLLEGES**

Roberts Wesleyan College  
Rochester Institute of Technology  
SUNY Brockport

### **PROGRAMS**

Medical Technology  
Molecular Bioscience & Biotechnology  
Biology; Biology-Chemistry

## CAREER CURRICULUM - A.A.S.

### Biotechnology

	YEAR OF GRADUATION			
	2013	2012	2011	2010
NUMBER RECEIVING DEGREES	10	9	14	6
NUMBER RESPONDING TO SURVEY	7	4	10	3
TOTAL EMPLOYED FULL-TIME	1	3	1	0
NUMBER AND PERCENT OF TOTAL EMPLOYED FULL-TIME IN FIELD	1 (100%)	1 (33%)	1 (100%)	0 (0%)
NUMBER REPORTING SALARIES	1	1	0	N.A.
MEDIAN SALARY	**	**	**	**
SALARY RANGE	**	**	**	**
NUMBER CONTINUING THEIR EDUCATION FULL-TIME	4	1	5	2
NUMBER EMPLOYED / CONTINUING THEIR EDUCATION PART-TIME	2	0	0	1
NUMBER AVAILABLE FOR EMPLOYMENT	0	0	2	0
NUMBER OTHER*	0	0	2	0
NUMBER NON-RESPONDENTS WHO TRANSFERRED (DATA PROVIDED BY THE NATIONAL STUDENT CLEARINGHOUSE)	1	2	1	3

N.A. - Information Not Available.

\* Includes those with undecided plans for employment or further education.

\*\*Not included if fewer than five respondents reported salaries for full-time employment in their field.

### Biotechnology

Biotechnology emphasizes the bioanalytical techniques and materials that are basic to the commercial development of useful products from biological systems and microorganisms. This course of study is recommended for students who wish to prepare for immediate employment in the field of biotechnology and have a strong interest in biology, biochemistry, or applied genetics.

# Computer Information Systems

### **2013 EMPLOYERS**

Johnson & Johnson  
Paychex  
Perlo's Italian Grill  
Sealed Air Corporation

### **POSITIONS**

Technical Support Specialist  
Software Engineer  
Server  
Technician

### **2013 COLLEGES**

(Not Disclosed)

### **PROGRAMS**

Computer Science

## Computer Information Systems

	YEAR OF GRADUATION			
	2013	2012	2011	2010
NUMBER RECEIVING DEGREES	9	11	5	4
NUMBER RESPONDING TO SURVEY	4	8	3	2
TOTAL EMPLOYED FULL-TIME	4	4	2	1
NUMBER AND PERCENT OF TOTAL EMPLOYED FULL-TIME IN FIELD	3 (75%)	4 (100%)	2 (100%)	1 (100%)
NUMBER REPORTING SALARIES	2	4	2	**
MEDIAN SALARY	**	**	**	**
SALARY RANGE	**	**	**	**
NUMBER CONTINUING THEIR EDUCATION FULL-TIME	0	0	1	0
NUMBER EMPLOYED / CONTINUING THEIR EDUCATION PART-TIME	0	2	0	0
NUMBER AVAILABLE FOR EMPLOYMENT	0	1	0	1
NUMBER OTHER*	0	1	0	0
NUMBER NON-RESPONDENTS WHO TRANSFERRED (DATA PROVIDED BY THE NATIONAL STUDENT CLEARINGHOUSE)	1	1	0	2

N.A. - Information Not Available.

\* Includes those with undecided plans for employment or further education.

\*\*Not included if fewer than five respondents reported salaries for full-time employment in their field.

## Computer Information Systems

The degree in Computer Information Systems prepares students for a computing career that requires on-the-job computer utilization. The program emphasizes applications programming and requires a moderate level of mathematics, including statistics and college algebra.

## Computer Systems Technology

### **2013 EMPLOYERS**

Frontier Communications

### **POSITIONS**

(Not Disclosed)

### **2013 COLLEGES**

### **PROGRAMS**

## CAREER CURRICULUM - A.A.S.

### Computer Systems Technology

	YEAR OF GRADUATION			
	2013	2012	2011	2010
NUMBER RECEIVING DEGREES	5	11	13	4
NUMBER RESPONDING TO SURVEY	3	8	10	3
TOTAL EMPLOYED FULL-TIME	1	4	7	1
NUMBER AND PERCENT OF TOTAL EMPLOYED FULL-TIME IN FIELD	1 (100%)	4 (100%)	6 (86%)	1 (100%)
NUMBER REPORTING SALARIES	1	4	2	**
MEDIAN SALARY	**	**	**	**
SALARY RANGE	**	**	**	**
NUMBER CONTINUING THEIR EDUCATION FULL-TIME	0	1	2	2
NUMBER EMPLOYED / CONTINUING THEIR EDUCATION PART-TIME	0	0	0	0
NUMBER AVAILABLE FOR EMPLOYMENT	2	2	1	0
NUMBER OTHER*	0	1	0	0
NUMBER NON-RESPONDENTS WHO TRANSFERRED (DATA PROVIDED BY THE NATIONAL STUDENT CLEARINGHOUSE)	0	2	0	1

\* Includes those with undecided plans for employment or further education.  
 \*\*Not included if fewer than five respondents reported salaries for full-time employment in their field.

### Computer Systems Technology

The Computer Systems Technology A.A.S. degree program is tailored to meet the growing demand for individuals with the diverse knowledge to maintain, service, evaluate and utilize increasingly sophisticated microprocessor and minicomputer systems. In addition to a strong electronics curriculum, students take specialized courses in computer technology. Students study the analysis and design of electronic circuits, computer logic, computer architecture, and the fundamentals of computer programming. Specific training is provided in: electronic instrumentation, troubleshooting and debugging techniques, computer peripherals, computer maintenance and fault diagnosis, and high-level and assembly language programming.

# Construction Technology

### **2013 EMPLOYERS**

(Not Disclosed)  
New York State Department of Transportation  
Rochester Spunk, LLC  
UPS

### **POSITIONS**

Cook; Estimator/Project Manager  
Transportation Construction Inspector (Co-Op Student)  
General Manager  
Supervisor

### **2013 COLLEGES**

Monroe Community College  
Rochester Institute of Technology

### **PROGRAMS**

Construction Technology  
Civil Engineering (2); Civil Engineering Technology (2)

## Construction Technology

	YEAR OF GRADUATION			
	2013	2012	2011	2010
NUMBER RECEIVING DEGREES	17	20	14	17
NUMBER RESPONDING TO SURVEY	8	10	10	10
TOTAL EMPLOYED FULL-TIME	2	8	8	4
NUMBER AND PERCENT OF TOTAL EMPLOYED FULL-TIME IN FIELD	1 (50%)	5 (63%)	6 (75%)	4 (100%)
NUMBER REPORTING SALARIES	0	4	5	**
MEDIAN SALARY	N.A.	**	\$25,000	**
SALARY RANGE	N.A.	**	\$16,000 to 38,000	**
NUMBER CONTINUING THEIR EDUCATION FULL-TIME	3	0	2	3
NUMBER EMPLOYED / CONTINUING THEIR EDUCATION PART-TIME	2	0	0	1
NUMBER AVAILABLE FOR EMPLOYMENT	1	1	0	1
NUMBER OTHER*	0	1	0	1
NUMBER NON-RESPONDENTS WHO TRANSFERRED (DATA PROVIDED BY THE NATIONAL STUDENT CLEARINGHOUSE)	0	3	2	7

\* Includes those with undecided plans for employment or further education.  
 \*\*Not included if fewer than five respondents reported salaries for full-time employment in their field.

## Construction Technology

All students entering the Construction Technology Department share a common curriculum in their first year. In their second year, they may choose to focus their coursework on highways and structures, environmental, or construction technology. Students are given sufficient familiarity with all specialities and the opportunity to specialize in a given area where they may seek immediate employment and possibly certification.

Those who choose Construction Technology are part of a team responsible for the coordination and implementation of a construction project. Some of the duties include cost estimating, project management, and project scheduling. This specialization combines a knowledge of core courses such as structural design, concrete design, and surveying, and expands on them to include their applications in the construction field.



# Criminal Justice

### **2013 EMPLOYERS**

(Not Disclosed)  
AlliedBarton  
AutoZone  
DialAmerica  
Finger Lakes DDSO  
Howell Properties  
Ibero-American Action League  
Lessing's  
Planet Fitness  
U.S. Security Associates  
Vision Nissan

### **POSITIONS**

Security Officer  
Security Guard  
Parts Driver  
Sales Associate  
Direct Support Assistant Trainee  
Realtor  
Youth Mentor  
Short Order Cook  
Certified Personal Trainer  
Security Officer  
Detail Manager

### **2013 COLLEGES**

Keuka College  
SUNY Brockport  
SUNY College of Technology at Canton  
SUNY Oswego (Online)  
SUNY University at Buffalo

### **PROGRAMS**

Criminal Justice (2)  
Criminal Justice (5); Social Work  
Legal Studies  
Public Justice-Public Administration  
Social Sciences Interdisciplinary

## CAREER CURRICULUM - A.A.S.

### Criminal Justice

	YEAR OF GRADUATION			
	2013	2012	2011	2010
NUMBER RECEIVING DEGREES	48	55	56	35
NUMBER RESPONDING TO SURVEY	15	26	38	25
TOTAL EMPLOYED FULL-TIME	6	12	18	12
NUMBER AND PERCENT OF TOTAL EMPLOYED FULL-TIME IN FIELD	3 (50%)	4 (33%)	7 (39%)	5 (42%)
NUMBER REPORTING SALARIES	2	3	5	4
MEDIAN SALARY	**	**	\$45,000	**
SALARY RANGE	**	**	\$18,720 to 75,000	**
NUMBER CONTINUING THEIR EDUCATION FULL-TIME	8	9	12	7
NUMBER EMPLOYED / CONTINUING THEIR EDUCATION PART-TIME	1	4	8	5
NUMBER AVAILABLE FOR EMPLOYMENT	0	0	0	0
NUMBER OTHER*	0	1	0	1
NUMBER NON-RESPONDENTS WHO TRANSFERRED (DATA PROVIDED BY THE NATIONAL STUDENT CLEARINGHOUSE)	6	9	6	10

\* Includes those with undecided plans for employment or further education.  
 \*\*Not included if fewer than five respondents reported salaries for full-time employment in their field.

### Criminal Justice

This program is designed to meet the community's need for highly trained law enforcement professionals who have the knowledge, skills, and attitude to respect the rights of both the crime victim and the law violator; to safeguard life and property to maintain peace; and to protect the constitutional rights of all people. The Criminal Justice field offers men and women a variety of challenging career opportunities in public and private service at the national, state, and local levels. Twenty- and twenty-five year retirement programs in the field further multiply opportunities for the job entrant. Most law enforcement agencies are Civil Service, with written examinations used as a basis for employment. Further, they have stipulated physical and moral standards. For the college educated person, more opportunities are open for employment.

# Dental Hygiene

### 2013 EMPLOYERS

(Not Disclosed)  
Brighton Dental Group  
Cayuga Family Dental  
Fatyeteville Center for Dentistry  
Groves & Kelley, DDS  
Home Depot  
Jeffery Arigo, DDS  
Olean General Hospital  
Pediatric Dentistry Bonita  
Pittsford Pediatric Dentistry  
Q Dental  
Victor Dental Care

### POSITIONS

(Not Disclosed); Server  
Dental Hygienist  
Registered Dental Hygienist  
Registered Dental Hygienist  
Dental Hygienist  
Cashier  
Orthodontic Assistant  
Dental Hygienist  
Registered Dental Hygienist  
Dental Hygienist  
Dental Hygienist  
Dental Hygienist

### 2013 COLLEGES

Faith School of Theology  
Howard University  
Monroe Community College

### PROGRAMS

Theological Studies  
Science  
(Not Disclosed)

## Dental Hygiene

	YEAR OF GRADUATION			
	2013	2012	2011	2010
NUMBER RECEIVING DEGREES	29	42	31	30
NUMBER RESPONDING TO SURVEY	16	26	22	21
TOTAL EMPLOYED FULL-TIME	7	16	9	15
NUMBER AND PERCENT OF TOTAL EMPLOYED FULL-TIME IN FIELD	7 (100%)	16 (100%)	9 (100%)	15 (100%)
NUMBER REPORTING SALARIES	5	13	8	8
MEDIAN SALARY	\$56,160	\$46,500	\$48,000	\$45,000
SALARY RANGE	\$52,000 to 60,000	\$24,000 to 56,000	\$40,000 to 60,000	\$38,688 to 60,000
NUMBER CONTINUING THEIR EDUCATION FULL-TIME	0	1	0	0
NUMBER EMPLOYED / CONTINUING THEIR EDUCATION PART-TIME	7	8	12	5
NUMBER AVAILABLE FOR EMPLOYMENT	2	1	1	1
NUMBER OTHER*	0	0	0	0
NUMBER NON-RESPONDENTS WHO TRANSFERRED (DATA PROVIDED BY THE NATIONAL STUDENT CLEARINGHOUSE)	0	0	1	9

\* Includes those with undecided plans for employment or further education.  
 \*\*Not included if fewer than five respondents reported salaries for full-time employment in their field.

## Dental Hygiene

The Dental Hygiene program prepares students for careers in preventive dentistry through clinical services and dental health counseling. Working under the supervision of a dentist, the hygienist assists the dentist and patient in providing dental health information and performing preventative dental treatments. Graduates of the program often find employment in private dental offices, clinics, and community health agencies.

# Electrical Engineering Technology

### **2013 EMPLOYERS**

(Not Disclosed)  
Alstom Signaling  
Classic Automation LLC  
Harris Corporation  
L-3 Communications  
Moog Industrial Group  
Oxbo International Corporation  
United Radio Service

### **POSITIONS**

Electrician  
(Not Disclosed)  
Electrical Controls Test Technician  
Manufacturing Technician  
Test Technician  
Electrical Engineering Co-op Student  
Electrician/Assembler  
Technician Level 2

### **2013 COLLEGES**

Rochester Institute of Technology

### **PROGRAMS**

Electrical Engineering (4); Electrical Engineering  
Technology

## Electrical Engineering Technology

	YEAR OF GRADUATION			
	2013	2012	2011	2010
NUMBER RECEIVING DEGREES	14	11	11	6
NUMBER RESPONDING TO SURVEY	11	8	10	5
TOTAL EMPLOYED FULL-TIME	7	6	7	2
NUMBER AND PERCENT OF TOTAL EMPLOYED FULL-TIME IN FIELD	7 (100%)	6 (100%)	7 (100%)	2 (100%)
NUMBER REPORTING SALARIES	6	5	3	**
MEDIAN SALARY	\$36,300	\$42,500	**	**
SALARY RANGE	\$27,000 to 48,000	\$23,000 to 60,000	**	**
NUMBER CONTINUING THEIR EDUCATION FULL-TIME	2	1	2	1
NUMBER EMPLOYED / CONTINUING THEIR EDUCATION PART-TIME	1	0	1	2
NUMBER AVAILABLE FOR EMPLOYMENT	1	0	0	0
NUMBER OTHER*	0	1	0	0
NUMBER NON-RESPONDENTS WHO TRANSFERRED (DATA PROVIDED BY THE NATIONAL STUDENT CLEARINGHOUSE)	0	1	0	10

\* Includes those with undecided plans for employment or further education.  
 \*\*Not included if fewer than five respondents reported salaries for full-time employment in their field.

## Electrical Engineering Technology

The electronics curriculum is designed to provide technical depth and breadth, and general education in support of the dynamic field of electronics. Students in this program spend over 400 classroom hours learning how to analyze and design a wide variety of electronic circuits and systems. They also log over 500 hours of laboratory time in which they become proficient in the use of industrial-grade equipment that includes: VOM, DVM, dual-trace storage oscilloscope, current probe, logic probe, logic analyzer (7D01), spectrum analyzer, and signature analyzer.

## CAREER CURRICULUM - A.A.S.

### EMS: Paramedic

#### **2013 EMPLOYERS**

Town of Greece Volunteer Ambulance

#### **POSITIONS**

Paramedic

#### **2013 COLLEGES**

#### **PROGRAMS**

## CAREER CURRICULUM - A.A.S.

### EMS: Paramedic

	YEAR OF GRADUATION			
	2013	2012	2011	2010
NUMBER RECEIVING DEGREES	2	4	7	6
NUMBER RESPONDING TO SURVEY	1	3	6	4
TOTAL EMPLOYED FULL-TIME	1	3	5	3
NUMBER AND PERCENT OF TOTAL EMPLOYED FULL-TIME IN FIELD	1 (100%)	3 (100%)	4 (80%)	3 (100%)
NUMBER REPORTING SALARIES	1	2	2	**
MEDIAN SALARY	**	**	**	**
SALARY RANGE	**	**	**	**
NUMBER CONTINUING THEIR EDUCATION FULL-TIME	0	0	1	0
NUMBER EMPLOYED / CONTINUING THEIR EDUCATION PART-TIME	0	0	0	0
NUMBER AVAILABLE FOR EMPLOYMENT	0	0	0	0
NUMBER OTHER*	0	0	0	1
NUMBER NON-RESPONDENTS WHO TRANSFERRED (DATA PROVIDED BY THE NATIONAL STUDENT CLEARINGHOUSE)	0	0	0	0

\* Includes those with undecided plans for employment or further education.  
 \*\*Not included if fewer than five respondents reported salaries for full-time employment in their field.

### EMS: Paramedic

This Associate in Applied Science degree is intended for those interested in preparing for the highest level of emergency medical service care - paramedicine. The program includes classroom, hospital clinical hours and field internships. Upon completion of the program, graduates are eligible to sit for the New York State Health Department certification examination.



# Entrepreneurial & Applied Business Studies

### **2013 EMPLOYERS**

CJD Enterprises  
Kohl's  
Marciano's Flooring  
Mario's Italian Restaurant  
Salvatore's Pizzeria

### **POSITIONS**

Fruit Farmer/Owner  
Beauty Advisor  
Self-Employed  
Business Consultant  
Bartender

### **2013 COLLEGES**

(Undecided)  
Rochester Institute of Technology

### **PROGRAMS**

Business  
Computer Science

## Entrepreneurial & Applied Business Studies

	YEAR OF GRADUATION			
	2013	2012	2011	2010
NUMBER RECEIVING DEGREES	12	14	18	4
NUMBER RESPONDING TO SURVEY	7	9	13	3
TOTAL EMPLOYED FULL-TIME	5	2	8	1
NUMBER AND PERCENT OF TOTAL EMPLOYED FULL-TIME IN FIELD	5 (100%)	2 (100%)	7 (88%)	1 (100%)
NUMBER REPORTING SALARIES	4	2	2	**
MEDIAN SALARY	**	**	**	**
SALARY RANGE	**	**	**	**
NUMBER CONTINUING THEIR EDUCATION FULL-TIME	1	3	2	2
NUMBER EMPLOYED / CONTINUING THEIR EDUCATION PART-TIME	0	3	2	2
NUMBER AVAILABLE FOR EMPLOYMENT	0	1	1	0
NUMBER OTHER*	1	0	0	0
NUMBER NON-RESPONDENTS WHO TRANSFERRED (DATA PROVIDED BY THE NATIONAL STUDENT CLEARINGHOUSE)	1	0	1	1

\*Includes those with undecided plans for employment or further education

\* First degree awarded in 2010

\*\*Not included if fewer than five respondents reported salaries for full-time employment in their field.

## Entrepreneurial & Applied Business Studies

This program develops the skills and knowledge needed by students who plan to start their own business ventures, work in a family business, expand their present business, or seek employment in a small business after receiving their Associates degree. The core courses within this degree provide students with a solid base of business, personal, analytical, and problem-solving skills. Additionally, this program provides basic knowledge in accounting, law, marketing, management, and customer service.

# Fire Protection Technology

### **2013 EMPLOYERS**

(Not Disclosed)  
Bluffton Township Fire District  
City of Rochester  
Gander Mountain  
Gates Ambulance  
Monroe Ambulance  
New England Motor Freight  
Perinton Ambulance  
Ridge Road Fire District  
Rural/Metro Corporation  
Village Green Nursing Home

### **POSITIONS**

EMT; Farmer  
Firefighter  
Firefighter  
Supervisor  
EMT-Basic  
EMT  
Truck Driver  
EMT  
Firefighter  
EMT  
Nurse's Assistant

### **2013 COLLEGES**

Monroe Community College  
SUNY Empire State College  
SUNY Finger Lakes Community College  
SUNY Genesee Community College

### **PROGRAMS**

Liberal Arts; Nursing ; Paramedic  
Fire Service Administration  
Paramedic  
Nursing

## Fire Protection Technology

	YEAR OF GRADUATION			
	2013	2012	2011	2010
NUMBER RECEIVING DEGREES	27	31	24	28
NUMBER RESPONDING TO SURVEY	13	16	15	21
TOTAL EMPLOYED FULL-TIME	8	11	13	13
NUMBER AND PERCENT OF TOTAL EMPLOYED FULL-TIME IN FIELD	6 (75%)	7 (64%)	9 (69%)	11 (85%)
NUMBER REPORTING SALARIES	3	6	5	8
MEDIAN SALARY	**	\$35,250	\$35,000	\$41,800
SALARY RANGE	**	\$9,888 to 80,000	\$24,000 to 45,000	\$18,000 to 75,000
NUMBER CONTINUING THEIR EDUCATION FULL-TIME	3	4	1	4
NUMBER EMPLOYED / CONTINUING THEIR EDUCATION PART-TIME	1	1	1	2
NUMBER AVAILABLE FOR EMPLOYMENT	1	0	0	2
NUMBER OTHER*	0	0	0	0
NUMBER NON-RESPONDENTS WHO TRANSFERRED (DATA PROVIDED BY THE NATIONAL STUDENT CLEARINGHOUSE)	4	11	2	7

\* Includes those with undecided plans for employment or further education.  
 \*\*Not included if fewer than five respondents reported salaries for full-time employment in their field.

## Fire Protection Technology

The Fire Protection Technology program is designed to explore the scientific techniques that may be applied to the practice of fire protection, fire prevention, and fire extinguishment. The objective of the curriculum is to prepare students to meet the challenges of our modern technological society. This challenge may appear in the form of hazardous chemicals and processes, modern urban problems affecting our inner cities, or an array of fire hazards. Employment opportunities may be found in both industry and commerce as fire protection specialists, industrial inspectors for both public and private agencies, or other diversified occupations, such as safety specialists or emergency medical technicians.

# Health Information Technology/Medical Records

### **2013 EMPLOYERS**

Cayuga Centers  
Citizens Bank  
Core Staffing  
Maximus Federal Services  
Rochester Regional Health System  
Rochester Rehabilitation Center  
SourceHOV  
UR Medicine

### **POSITIONS**

Medical Records Technician  
Bank Teller  
Paraprofessional  
Technical Writer  
Health Information Management Coder  
Health Information Clerk  
Client Services Associate  
Data Integrity Analyst; Medical Coder; Senior Medical  
Records Coder

### **2013 COLLEGES**

SUNY Brockport

### **PROGRAMS**

Biology

## Health Information Technology/Medical Records

	YEAR OF GRADUATION			
	2013	2012	2011	2010
NUMBER RECEIVING DEGREES	19	17	20	14
NUMBER RESPONDING TO SURVEY	11	12	16	9
TOTAL EMPLOYED FULL-TIME	9	8	12	6
NUMBER AND PERCENT OF TOTAL EMPLOYED FULL-TIME IN FIELD	9 (100%)	7 (88%)	10 (83%)	5 (83%)
NUMBER REPORTING SALARIES	8	6	8	5
MEDIAN SALARY	\$31,000	\$33,500	\$31,200	\$36,000
SALARY RANGE	\$19,760 to 50,000	\$28,000 to 52,000	\$25,000 to 63,000	\$31,000 to 45,000
NUMBER CONTINUING THEIR EDUCATION FULL-TIME	0	1	2	1
NUMBER EMPLOYED / CONTINUING THEIR EDUCATION PART-TIME	1	2	1	0
NUMBER AVAILABLE FOR EMPLOYMENT	1	1	0	1
NUMBER OTHER*	0	0	1	1
NUMBER NON-RESPONDENTS WHO TRANSFERRED (DATA PROVIDED BY THE NATIONAL STUDENT CLEARINGHOUSE)	0	0	0	5

\* Includes those with undecided plans for employment or further education.  
 \*\*Not included if fewer than five respondents reported salaries for full-time employment in their field.

## Health Information Technology/Medical Records

Health Information Technicians are professionals who are trained and skilled in the technical aspects of preparing, analyzing, and preserving health information used for patient care, assessment of quality health care, and financial, legal and research activities. Accredited technicians are employed in managerial or technical capacities in the health information departments of hospitals, health clinics, and long term and other health care facilities.

# Heating, Ventilation & Air Conditioning Technology

### **2013 EMPLOYERS**

CVS Pharmacy  
Davis-Ulmer Sprinkler Co.  
Kenron Industrial Air Conditioning  
U.S. Postal Service  
Xerox

### **POSITIONS**

Store Manager Trainee  
Building Inspector  
HVAC Technician  
City Carrier Assistant  
Operations Engineer

### **2013 COLLEGES**

Ferris State University  
Monroe Community College

### **PROGRAMS**

HVACR Engineering Technology-Energy Management  
Music Performance; Solar Thermal Technology (2)

## CAREER CURRICULUM - A.A.S.

### Heating, Ventilation & Air Conditioning Technology

	YEAR OF GRADUATION			
	2013	2012	2011	2010
NUMBER RECEIVING DEGREES	28	30	27	12
NUMBER RESPONDING TO SURVEY	11	20	20	9
TOTAL EMPLOYED FULL-TIME	5	15	16	5
NUMBER AND PERCENT OF TOTAL EMPLOYED FULL-TIME IN FIELD	3 (60%)	12 (80%)	13 (81%)	4 (80%)
NUMBER REPORTING SALARIES	2	10	8	**
MEDIAN SALARY	**	\$32,500	\$31,200	**
SALARY RANGE	**	\$21,000 to 60,000	\$7,634 to 42,000	**
NUMBER CONTINUING THEIR EDUCATION FULL-TIME	1	2	0	0
NUMBER EMPLOYED / CONTINUING THEIR EDUCATION PART-TIME	2	1	2	0
NUMBER AVAILABLE FOR EMPLOYMENT	2	1	1	3
NUMBER OTHER*	1	1	1	1
NUMBER NON-RESPONDENTS WHO TRANSFERRED (DATA PROVIDED BY THE NATIONAL STUDENT CLEARINGHOUSE)	4	0	0	3

\* Includes those with undecided plans for employment or further education.  
 \*\*Not included if fewer than five respondents reported salaries for full-time employment in their field.

### Heating, Ventilation & Air Conditioning Technology

This program prepares students for a career in the HVAC industry in such positions as field service technician, construction field estimator, service representative, systems detailer/designer, and sales representative. Emphasis is placed on the practical application of HVAC systems. This program also benefits people who are already employed in the field and desire advancement.



# Hospitality Management

### 2013 EMPLOYERS

(Not Disclosed)  
Benucci's Italian Restaurant  
Brookdale Senior Living  
DePrez Group of Travel Companies, The  
DoubleTree by Hilton  
Gables at Brighton  
Greater Rochester International Airport  
Hampton Inn  
Heather Heights of Pittsford  
Leo's Bakery  
Lodge at Woodcliff, The  
MacGregors Grill & Tap Room  
Monroe Community Hospital  
Pepsi Bottling Group  
Pizza Hut  
Shorts Bar & Grill  
Sodexo  
Uno's Chicago Bar & Grill

### POSITIONS

(Not Disclosed); Payroll Administrator  
Line Cook  
Lead Cook  
Executive Assistant  
Guest Services Manager  
Server  
Security Agent  
Front Desk Associate  
Dining Room Supervisor  
Baker  
Assistant Supervisor  
Server  
Assistant Cook  
Merchandiser  
Supervisor  
Cook  
Caterer  
Line Cook

### 2013 COLLEGES

Monroe Community College  
  
Niagara University  
  
Paul Smith's College  
Rochester Institute of Technology  
SUNY Oswego

### PROGRAMS

(Not Disclosed); Emergency Medical Technician; Liberal Arts; Precision Machining  
Hospitality; Hotel & Restaurant Management; Hotel Management  
Hospitality  
Food Service Management  
Human Resource Management

## Hospitality Management

	YEAR OF GRADUATION			
	2013	2012	2011	2010
NUMBER RECEIVING DEGREES	52	67	53	58
NUMBER RESPONDING TO SURVEY	22	35	36	36
TOTAL EMPLOYED FULL-TIME	12	15	8	18
NUMBER AND PERCENT OF TOTAL EMPLOYED FULL-TIME IN FIELD	11 (92%)	12 (80%)	7 (88%)	16 (89%)
NUMBER REPORTING SALARIES	9	8	5	9
MEDIAN SALARY	\$23,920	\$25,500	\$21,000	\$24,960
SALARY RANGE	\$19,700 to 35,000	\$13,000 to 44,762	\$15,000 to 24,000	\$17,000 to 50,000
NUMBER CONTINUING THEIR EDUCATION FULL-TIME	5	12	15	9
NUMBER EMPLOYED / CONTINUING THEIR EDUCATION PART-TIME	5	8	8	6
NUMBER AVAILABLE FOR EMPLOYMENT	0	0	2	0
NUMBER OTHER*	0	0	3	3
NUMBER NON-RESPONDENTS WHO TRANSFERRED (DATA PROVIDED BY THE NATIONAL STUDENT CLEARINGHOUSE)	4	8	4	20

\* Includes those with undecided plans for employment or further education.

## Hospitality Management

The curriculum emphasizes a broad base of industry skills such as technical knowledge, communication and customer relations skills, and creative problem-solving. Cooperative Education provides work-based experience to expand students' learning opportunities.

The program prepares students for a wide variety of career opportunities within the hospitality industry. Such career choices include, but are not limited to: culinary arts, food service administration, supermarket management, health care and nutrition, hotel technology, golf management, travel and tourism, and physical fitness technology.

Graduates of the Hospitality Management program often begin their careers as manager trainees or supervisors. With experience, they qualify for such positions as Restaurant Manager, Caterer, Sous Chef, Front Office Manager, Convention Sales Representative, Meeting Planner, Tour Operator, Tourism Consultant, Gold Facilities Manager, and Manager of Physical Fitness Facility, Health Club or Spa. Transfer and 2+2 programs are available in all areas.

*Note: This program is made up of the formerly individual A.A.S. degree programs of Hotel Technology, Food Services Administration, and Travel & Tourism.*

# Human Services

### **2013 EMPLOYERS**

Brockport Central School District  
Catholic Charities Community Services  
Kmart  
Monroe Community College Association  
Rochester City School District  
RochesterWorks  
Upstate Executive Legal Process  
Walmart  
Wilson Commencement Park  
YMCA of Greater Rochester

### **POSITIONS**

Substitute Teacher  
Community Support Specialist  
Cashier  
Administrative Assistant  
Administrative Assistant  
Youth Career Services Specialist  
Owner & Director  
Sales Associate  
(Not Disclosed)  
Lead Teacher

### **2013 COLLEGES**

(Not Disclosed)  
(Undecided)  
Keuka College  
Monroe Community College  
  
SUNY Brockport

### **PROGRAMS**

Social Work  
(Undecided)  
Social Work (2)  
Addictions Counseling (3); Corrections Administration;  
Criminal Justice; Liberal Arts  
(Undecided); Social Work; Sociology

## Human Services

	YEAR OF GRADUATION			
	2013	2012	2011	2010
NUMBER RECEIVING DEGREES	37	58	49	31
NUMBER RESPONDING TO SURVEY	18	23	31	21
TOTAL EMPLOYED FULL-TIME	6	12	13	11
NUMBER AND PERCENT OF TOTAL EMPLOYED FULL-TIME IN FIELD	5 (83%)	11 (92%)	9 (69%)	8 (73%)
NUMBER REPORTING SALARIES	5	8	3	8
MEDIAN SALARY	\$33,300	\$25,500	**	\$27,000
SALARY RANGE	\$22,000 to 40,000	\$12,000 to 30,000	**	\$16,640 to 34,000
NUMBER CONTINUING THEIR EDUCATION FULL-TIME	5	8	5	4
NUMBER EMPLOYED / CONTINUING THEIR EDUCATION PART-TIME	5	3	7	3
NUMBER AVAILABLE FOR EMPLOYMENT	1	0	5	2
NUMBER OTHER*	1	0	1	1
NUMBER NON-RESPONDENTS WHO TRANSFERRED (DATA PROVIDED BY THE NATIONAL STUDENT CLEARINGHOUSE)	5	18	7	9

\* Includes those with undecided plans for employment or further education.

## Human Services

This program prepares students for employment in agencies, schools, and centers that value paraprofessionals with a combination of college course work and human services field experience. Human Services graduates assist professionals in all kinds of positions where people help people. These include community and social welfare agencies, mental health and social agencies, community organizations, habilitation and rehabilitation agencies, day care centers and nursery schools, and geriatric services.

# Interior Design

### **2013 EMPLOYERS**

Meticulosity  
Monroe Community College  
Sherwin-Williams

### **POSITIONS**

Owner/Designer  
Administrative Assistant  
Sales Associate

### **2013 COLLEGES**

Rochester Institute of Technology

### **PROGRAMS**

Interior Design

## CAREER CURRICULUM - A.A.S.

### Interior Design

	YEAR OF GRADUATION			
	2013	2012	2011	2010
NUMBER RECEIVING DEGREES	13	18	25	13
NUMBER RESPONDING TO SURVEY	3	9	13	7
TOTAL EMPLOYED FULL-TIME	2	1	6	4
NUMBER AND PERCENT OF TOTAL EMPLOYED FULL-TIME IN FIELD	2 (100%)	1 (100%)	2 (33%)	0 (0%)
NUMBER REPORTING SALARIES	1	1	1	N.A.
MEDIAN SALARY	**	**	**	N.A.
SALARY RANGE	**	**	**	N.A.
NUMBER CONTINUING THEIR EDUCATION FULL-TIME	1	4	4	2
NUMBER EMPLOYED / CONTINUING THEIR EDUCATION PART-TIME	0	3	3	0
NUMBER AVAILABLE FOR EMPLOYMENT	0	1	0	1
NUMBER OTHER*	0	0	0	0
NUMBER NON-RESPONDENTS WHO TRANSFERRED (DATA PROVIDED BY THE NATIONAL STUDENT CLEARINGHOUSE)	2	3	4	5

\* Includes those with undecided plans for employment or further education.  
 \*\*Not included if fewer than five respondents reported salaries for full-time employment in their field.

### Interior Design

This degree program prepares students to begin a career in interior design. Graduates of the program often choose to pursue careers in design-related industries, furniture, and display design or sales. The home furnishings and commercial retail sectors also provide unlimited opportunities.

## CAREER CURRICULUM - A.A.S.

### Massage Therapy

#### **2013 EMPLOYERS**

#### **POSITIONS**

#### **2013 COLLEGES**

#### **PROGRAMS**

## CAREER CURRICULUM - A.A.S.

### Massage Therapy

	YEAR OF GRADUATION			
	2013	2012	2011	2010
NUMBER RECEIVING DEGREES	2	12	15	10
NUMBER RESPONDING TO SURVEY	0	6	11	6
TOTAL EMPLOYED FULL-TIME	N.A.	2	4	2
NUMBER AND PERCENT OF TOTAL EMPLOYED FULL-TIME IN FIELD	N.A.	0 (0%)	3 (75%)	1 (50%)
NUMBER REPORTING SALARIES	N.A.	0	0	**
MEDIAN SALARY	N.A.	N.A.	N.A.	**
SALARY RANGE	N.A.	N.A.	N.A.	**
NUMBER CONTINUING THEIR EDUCATION FULL-TIME	N.A.	0	1	1
NUMBER EMPLOYED / CONTINUING THEIR EDUCATION PART-TIME	N.A.	4	6	3
NUMBER AVAILABLE FOR EMPLOYMENT	N.A.	0	0	0
NUMBER OTHER*	N.A.	0	0	0
NUMBER NON-RESPONDENTS WHO TRANSFERRED (DATA PROVIDED BY THE NATIONAL STUDENT CLEARINGHOUSE)	0	1	0	4

\* Includes those with undecided plans for employment or further education.  
 \*\*Not included if fewer than five respondents reported salaries for full-time employment in their field.

### Massage Therapy

This program is designed to provide students with the education and experience to be licensed massage therapists in New York State. The curriculum includes extensive study in both western and oriental massage, biological science, health education, and business. Once licensed, graduates can establish their own private practice as a licensed massage therapist (LMT) or assume a staff position as an LMT in a health facility, resort, hotel, or health club.

*Note: Students are no longer being admitted into this program.*



# Mechanical Technology

### **2013 EMPLOYERS**

Corning Incorporated  
EnviTec Biogas USA  
Goodwill of the Finger Lakes  
Harris Corporation  
Liberty Pumps  
Micro Instruments Corp.  
Nationwide Precision Products  
Northern Air Systems  
Walker Brush  
Zotos International

### **POSITIONS**

Senior CAD Technician/Designer  
Service Technician  
Supervisor  
Engineering Technician  
Quality Engineer Co-op Student  
Project Manager  
Quality Engineer  
Mechanical Designer  
Supervisor  
Silk Screen Manager

### **2013 COLLEGES**

Monroe Community College  
Roberts Wesleyan College  
Rochester Institute of Technology  
  
SUNY Buffalo State College

### **PROGRAMS**

Mechanical Engineering Technology; Non-Matriculated  
Organizational Management  
Electrical Mechanical Engineering Technology;  
Manufacturing Engineering; Mechanical Engineering  
Technology (4)  
Mechanical Engineering; Mechanical Engineering  
Technology

## Mechanical Technology

	YEAR OF GRADUATION			
	2013	2012	2011	2010
NUMBER RECEIVING DEGREES	20	16	14	19
NUMBER RESPONDING TO SURVEY	14	7	9	12
TOTAL EMPLOYED FULL-TIME	10	4	7	6
NUMBER AND PERCENT OF TOTAL EMPLOYED FULL-TIME IN FIELD	9 (90%)	3 (75%)	6 (86%)	6 (100%)
NUMBER REPORTING SALARIES	6	3	2	3
MEDIAN SALARY	\$42,500	**	**	**
SALARY RANGE	\$20,000 to 53,000	**	**	**
NUMBER CONTINUING THEIR EDUCATION FULL-TIME	4	2	2	5
NUMBER EMPLOYED / CONTINUING THEIR EDUCATION PART-TIME	0	1	0	0
NUMBER AVAILABLE FOR EMPLOYMENT	0	0	0	1
NUMBER OTHER*	0	0	0	0
NUMBER NON-RESPONDENTS WHO TRANSFERRED (DATA PROVIDED BY THE NATIONAL STUDENT CLEARINGHOUSE)	5	5	2	7

\* Includes those with undecided plans for employment or further education.  
 \*\*Not included if fewer than five respondents reported salaries for full-time employment in their field.

## Mechanical Technology

The Mechanical Technology program prepares students for challenging careers in mechanical design. The mechanical designer requires knowledge in many areas including mechanical drafting, computer-aided drafting and design, machine shop, robotics, and machine components. This program provides a thorough understanding of these concepts as they apply to today's high technology. In particular, the drafting and design courses emphasize the national standards for drafting and geometric dimensioning and tolerancing.

## Nursing

### 2013 EMPLOYERS

(Not Disclosed)  
 (Undisclosed Private School)  
 (Private Family)  
 Blossom North Nursing Home  
 Blossom View Nursing Home  
 Crest Manor Living & Rehabilitation Center  
 Episcopal SeniorLife Communities  
 Fresenius Medical Care  
 Highland Hospital  
 Hill Haven  
 Hurlbut, The  
 Integrative Healing Arts Center  
 Jewish Home of Rochester  
 Latta Road Nursing Home  
 Marcy A. Hartle, MD  
 Maxim Spa & Salon  
 Monroe Community Hospital  
 Monroe County Jail  
 Newark Wayne Community Hospital  
 Rochester Eye and Tissue Bank  
 Rochester Regional Health System  
  
 Rochester Psychiatric Center  
 St. John's Home  
 UR Medicine  
 VA Western New York Healthcare System

### POSITIONS

RN Clinician I  
 Summer Camp Counselor  
 Home Health Aide  
 RN  
 RN Case Manager  
 Charge Nurse  
 Clinical Coordinator  
 RN  
 RN (2)  
 RN  
 RN Nurse Manager  
 Massage Therapist  
 RN  
 Floor Nurse/MDF Coordinator; RN  
 RN  
 Massage Therapist  
 Charge RN; RN (2)  
 Nursing Supervisor  
 RN; RN Clinician I  
 Tissue Bank Coordinator  
 Clinical Nurse; Clinical Nurse I RN; Inpatient Psychiatric  
 Nurse; RN (41); RN Staff Nurse I  
 RN  
 Nurse Manager (2); Nurse's Assistant; RN (2)  
 Nurse; RN (11)  
 RN

### 2013 COLLEGES

(Not Disclosed)  
 Monroe Community College  
 Roberts Wesleyan College  
 St. John Fisher College  
 SUNY Brockport  
 SUNY Empire State College  
 University of Phoenix  
 University of Rochester

### PROGRAMS

(Not Disclosed, 2); Nursing (3)  
 (Undecided)  
 Nursing (3)  
 Nursing (5)  
 Nursing (15)  
 Nursing  
 Nursing (2)  
 Nursing (7); Nursing Administration; Science

## CAREER CURRICULUM - A.A.S.

### Nursing

	YEAR OF GRADUATION			
	2013	2012	2011	2010
NUMBER RECEIVING DEGREES	133	134	131	132
NUMBER RESPONDING TO SURVEY	91	88	100	102
TOTAL EMPLOYED FULL-TIME	79	73	82	93
NUMBER AND PERCENT OF TOTAL EMPLOYED FULL-TIME IN FIELD	79 (100%)	72 (99%)	81 (99%)	90 (88%)
NUMBER REPORTING SALARIES	62	64	60	81
MEDIAN SALARY	\$48,620	\$44,000	\$48,000	\$48,000
SALARY RANGE	\$26,000 to 68,640	\$34,000 to 60,000	\$35,000 to 70,000	\$22,500 to 72,000
NUMBER CONTINUING THEIR EDUCATION FULL-TIME	1	1	0	0
NUMBER EMPLOYED / CONTINUING THEIR EDUCATION PART-TIME	7	9	8	6
NUMBER AVAILABLE FOR EMPLOYMENT	2	3	9	3
NUMBER OTHER*	2	2	1	0
NUMBER NON-RESPONDENTS WHO TRANSFERRED (DATA PROVIDED BY THE NATIONAL STUDENT CLEARINGHOUSE)	5	3	3	23

\* Includes those with undecided plans for employment or further education.

### Nursing

The Nursing program prepares qualified men and women for entry into professional nursing practice. Upon completion of the program, graduates are eligible for admission to the NCLEX-RN (National Council Licensure Examination for Registered Nurses). Graduates find themselves well prepared for and successful on these examinations: year after year, 96% to 99% of them pass the licensing examination the first time they take it. Graduates of the program are employed in a variety of health care settings in the Rochester area and in other parts of the country. Many graduates have completed or are working toward higher degrees in nursing.

# Office Technology

### **2013 EMPLOYERS**

Epilepsy-Pralid, Inc  
Friendly Home  
Hamberger & Weiss  
O'Brien & Gere  
Richards & West Jewelry  
Rochester Childfirst Network

### **POSITIONS**

Administrative Assistant  
Dining Services Associate  
Administrative Assistant  
Administrative Assistant  
Administrative Assistant  
CACSP Field Representative

### **2013 COLLEGES**

SUNY Erie Community College

### **PROGRAMS**

Paralegal Studies

## Office Technology

	YEAR OF GRADUATION			
	2013	2012	2011	2010
NUMBER RECEIVING DEGREES	17	12	17	20
NUMBER RESPONDING TO SURVEY	10	8	10	13
TOTAL EMPLOYED FULL-TIME	4	3	7	5
NUMBER AND PERCENT OF TOTAL EMPLOYED FULL-TIME IN FIELD	4 (100%)	3 (100%)	6 (86%)	5 (100%)
NUMBER REPORTING SALARIES	3	3	5	4
MEDIAN SALARY	**	**	\$31,000	**
SALARY RANGE	**	**	\$18,000 to 40,000	**
NUMBER CONTINUING THEIR EDUCATION FULL-TIME	1	2	1	4
NUMBER EMPLOYED / CONTINUING THEIR EDUCATION PART-TIME	1	1	0	4
NUMBER AVAILABLE FOR EMPLOYMENT	4	2	1	0
NUMBER OTHER*	0	0	1	0
NUMBER NON-RESPONDENTS WHO TRANSFERRED (DATA PROVIDED BY THE NATIONAL STUDENT CLEARINGHOUSE)	1	1	0	7

\* Includes those with undecided plans for employment or further education.  
 \*\*Not included if fewer than five respondents reported salaries for full-time employment in their field.

## Office Technology

The widespread use of automated equipment is changing the role of the secretary in the modern office. Today, secretaries are frequently asked to combine word processing skills with traditional tasks such as typing, transcribing, handling correspondence, scheduling appointments, and maintaining files. In some settings, secretaries may perform such specialized work as drafting reports, researching and writing documents, bookkeeping, operating high tech equipment, supervising other employees or managing other minor administrative tasks. MCC's Office Technology programs are designed to provide students with the skills needed for employment in today's high technology office environments and in specific settings. Specialized courses combined with a foundation in communications give students the edge in the job market after graduation.

*Note: The Legal Office Administrative Assistant program part of the Office Technology is being deactivated.*

# Optical Systems Technology

### **2013 EMPLOYERS**

JML Optical  
UR Medicine

### **POSITIONS**

Optical Technician  
Laser Technician

### **2013 COLLEGES**

University of Rochester

### **PROGRAMS**

Optics

## Optical Systems Technology

	YEAR OF GRADUATION			
	2013	2012	2011	2010
NUMBER RECEIVING DEGREES	4	3	1	0
NUMBER RESPONDING TO SURVEY	2	1	1	N.A.
TOTAL EMPLOYED FULL-TIME	2	1	1	N.A.
NUMBER AND PERCENT OF TOTAL EMPLOYED FULL-TIME IN FIELD	2 (100%)	1 (100%)	1 (100%)	N.A.
NUMBER REPORTING SALARIES	2	1	0	N.A.
MEDIAN SALARY	**	**	N.A.	N.A.
SALARY RANGE	**	**	N.A.	N.A.
NUMBER CONTINUING THEIR EDUCATION FULL-TIME	0	0	0	N.A.
NUMBER EMPLOYED / CONTINUING THEIR EDUCATION PART-TIME	0	0	0	N.A.
NUMBER AVAILABLE FOR EMPLOYMENT	0	0	0	N.A.
NUMBER OTHER*	0	0	0	N.A.
NUMBER NON-RESPONDENTS WHO TRANSFERRED (DATA PROVIDED BY THE NATIONAL STUDENT CLEARINGHOUSE)	1	1	0	N.A.

N.A. - Information Not Available.

\* Includes those with undecided plans for employment or further education.

\*\*Not included if fewer than five respondents reported salaries for full-time employment in their field.

## Optical Systems Technology

The Optical Systems Technology curriculum offers a unique, comprehensive program which prepares graduates for work in new, rapidly expanding technologies combining optics with electronics, mechanics, and photographic processes. Optical system technicians work with scientists and engineers in research, development, design, production, quality control, test and evaluation of optical components and systems as well as sales and service. Optical Technology is very important to such activities as the space program, astronomy, laser applications, fiber optics, and the search for solar and other new sources of energy.



# Precision Machining

### **2013 EMPLOYERS**

Calvary Automation  
Dependable Tool & Die Co., Inc.  
East Side Machine, Inc.  
Frederico Construction & Demolition  
Optimax Systems  
Rochester Gear, Inc.  
TREK, Inc.  
Val Tech Holdings, Inc.

### **POSITIONS**

Junior Engineer  
Machinist  
C&C Machinist  
Foreman/Operator  
Machinist  
Machinist  
Machinist  
Apprentice Moldmaker

### **2013 COLLEGES**

Monroe Community College  
Rochester Institute of Technology

### **PROGRAMS**

Mechanical Engineering Technology (2)  
Mechanical Engineering

## Precision Machining

	YEAR OF GRADUATION			
	2013	2012	2011	2010
NUMBER RECEIVING DEGREES	18	21	15	16
NUMBER RESPONDING TO SURVEY	8	13	8	12
TOTAL EMPLOYED FULL-TIME	8	9	7	7
NUMBER AND PERCENT OF TOTAL EMPLOYED FULL-TIME IN FIELD	7 (88%)	8 (89%)	7 (100%)	6 (86%)
NUMBER REPORTING SALARIES	5	7	3	4
MEDIAN SALARY	\$28,080	\$28,700	**	**
SALARY RANGE	\$24,440 to 37,440	\$23,000 to 46,000	**	**
NUMBER CONTINUING THEIR EDUCATION FULL-TIME	7	0	0	3
NUMBER EMPLOYED / CONTINUING THEIR EDUCATION PART-TIME	0	1	0	1
NUMBER AVAILABLE FOR EMPLOYMENT	0	2	0	1
NUMBER OTHER*	0	1	1	0
NUMBER NON-RESPONDENTS WHO TRANSFERRED (DATA PROVIDED BY THE NATIONAL STUDENT CLEARINGHOUSE)	0	1	1	4

\* Includes those with undecided plans for employment or further education.  
 \*\*Not included if fewer than five respondents reported salaries for full-time employment in their field.

## Precision Machining

This program is designed to prepare students for employment in the precision metal working industry. It provides the academic course work, hands-on skills, and advanced manufacturing processes required by business. Graduates have a working knowledge of advanced manufacturing techniques that make them valuable to an employer. They are able to enter or advance in such fields as mold making, machine building, tool making, die making, CNC machinist, or other manufacturing areas. This program is offered in partnership with the Rochester Chapter of the National Tooling and Machining Association.

## Public Administration

### **2013 EMPLOYERS**

### **POSITIONS**

### **2013 COLLEGES**

### **PROGRAMS**

## CAREER CURRICULUM - A.A.S.

### Public Administration

	YEAR OF GRADUATION			
	2013	2012	2011	2010
NUMBER RECEIVING DEGREES	0	0	21	0
NUMBER RESPONDING TO SURVEY	N.A.	N.A.	13	N.A.
TOTAL EMPLOYED FULL-TIME	N.A.	N.A.	9	N.A.
NUMBER AND PERCENT OF TOTAL EMPLOYED FULL-TIME IN FIELD	N.A.	N.A.	8 (89%)	N.A.
NUMBER REPORTING SALARIES	N.A.	N.A.	7	N.A.
MEDIAN SALARY	N.A.	N.A.	\$28,700	N.A.
SALARY RANGE	N.A.	N.A.	N.A.	N.A.
NUMBER CONTINUING THEIR EDUCATION FULL-TIME	N.A.	N.A.	N.A.	0
NUMBER EMPLOYED / CONTINUING THEIR EDUCATION PART-TIME	N.A.	N.A.	N.A.	0
NUMBER AVAILABLE FOR EMPLOYMENT	N.A.	N.A.	N.A.	0
NUMBER OTHER*	N.A.	N.A.	N.A.	0
NUMBER NON-RESPONDENTS WHO TRANSFERRED (DATA PROVIDED BY THE NATIONAL STUDENT CLEARINGHOUSE)	N.A.	N.A.	N.A.	0

N.A. - Information Not Available.

\* Includes those with undecided plans for employment or further education.

\*\*Not included if fewer than five respondents reported salaries for full-time employment in their field.

### Public Administration

The Public Administration A.A.S. degree program is designed to prepare individuals to work in the public sector. The program stresses the skills, knowledge, and attitudes needed to provide professional service required in public administration, preparing students for careers in state, county, and municipal government or not-for-profit organizations.

# Radiologic Technology

### **2013 EMPLOYERS**

(Not Disclosed)  
(Undisclosed Hospital)  
Highland Hospital  
Rochester General Hospital  
Rochester Immediate Care  
UltraMobile Imaging  
University Medical Imaging  
UR Medicine  
Urgent Care Now

### **POSITIONS**

(Not Disclosed)  
Radiologic Technologist (2)  
Radiologic Technologist (2)  
Radiologic Technologist  
Radiologic Technologist  
Radiologic Technologist  
X-ray Technician  
Radiologic Technologist  
Radiologic Technologist

### **2013 COLLEGES**

### **PROGRAMS**

## Radiologic Technology

	YEAR OF GRADUATION			
	2013	2012	2011	2010
NUMBER RECEIVING DEGREES	22	26	29	33
NUMBER RESPONDING TO SURVEY	12	17	18	25
TOTAL EMPLOYED FULL-TIME	6	11	6	10
NUMBER AND PERCENT OF TOTAL EMPLOYED FULL-TIME IN FIELD	6 (100%)	11 (100%)	6 (100%)	8 (80%)
NUMBER REPORTING SALARIES	6	10	4	5
MEDIAN SALARY	\$41,300	\$38,000	**	\$42,500
SALARY RANGE	\$38,000 to 45,000	\$18,000 to 46,000	**	\$35,000 to 76,000
NUMBER CONTINUING THEIR EDUCATION FULL-TIME	0	1	2	2
NUMBER EMPLOYED / CONTINUING THEIR EDUCATION PART-TIME	5	5	7	12
NUMBER AVAILABLE FOR EMPLOYMENT	1	0	3	1
NUMBER OTHER*	0	0	0	0
NUMBER NON-RESPONDENTS WHO TRANSFERRED (DATA PROVIDED BY THE NATIONAL STUDENT CLEARINGHOUSE)	0	2	0	8

\* Includes those with undecided plans for employment or further education.

## Radiologic Technology

Radiologic Technologists and Diagnostic Radiographers use controlled radiant energy (x-rays) to produce anatomical images on photographic x-ray film. The resulting radiograph is interpreted by a radiologist (specialized physician) and is used to detect injury or disease. The objectives of this program are to prepare entry-level diagnostic radiographers who can produce high quality radiographs, who can interact with patients in a caring manner, and who can accept the responsibility of the profession and effectively carry out the tasks.

# Visual Communications Technology: Graphic Design

### **2013 EMPLOYERS**

Brick City Catering  
City of Rochester - Public Library  
Exalt Printing Solutions  
Heritage Christian Services  
Jewish Community Center  
PetSmart  
QCI Direct  
Quick Fill Gas Station  
Ski Company, The  
Target  
Wegmans

### **POSITIONS**

Catering Staff Member  
Page  
Graphic Designer  
Resident Counselor  
Fitness Room Attendant  
Pet Care Associate  
Warehouse Worker  
Cashier  
Sales Associate  
(Not Disclosed)  
Cashier (2)

### **2013 COLLEGES**

Maryville University  
Monroe Community College  
Nazareth College  
Rochester Institute of Technology  
SUNY Brockport  
SUNY Buffalo State College

### **PROGRAMS**

Graphic Design  
Commercial Arts Illustration  
Art Education; Graphic Design  
Graphic Design (2)  
Graphic Design  
Speech-Language Pathology

## Visual Communications Technology: Graphic Design

	YEAR OF GRADUATION			
	2013	2012	2011	2010
NUMBER RECEIVING DEGREES	42	33	47	41
NUMBER RESPONDING TO SURVEY	15	17	29	26
TOTAL EMPLOYED FULL-TIME	5	3	10	4
NUMBER AND PERCENT OF TOTAL EMPLOYED FULL-TIME IN FIELD	4 (80%)	1 (33%)	4 (40%)	2 (50%)
NUMBER REPORTING SALARIES	1	1	4	**
MEDIAN SALARY	**	**	**	**
SALARY RANGE	**	**	**	**
NUMBER CONTINUING THEIR EDUCATION FULL-TIME	6	9	17	15
NUMBER EMPLOYED / CONTINUING THEIR EDUCATION PART-TIME	2	3	1	5
NUMBER AVAILABLE FOR EMPLOYMENT	2	1	1	2
NUMBER OTHER*	0	1	0	0
NUMBER NON-RESPONDENTS WHO TRANSFERRED (DATA PROVIDED BY THE NATIONAL STUDENT CLEARINGHOUSE)	9	10	9	13

\* Includes those with undecided plans for employment or further education.  
 \*\*Not included if fewer than five respondents reported salaries for full-time employment in their field.

## Visual Communications Technology: Graphic Design

The Visual Communications Technology: Graphic Design program is designed as a specific career path for students interested in gaining employment in fields such as graphic design and printing. The program provides students with a foundation in the design and production of graphics and the operation of printing press equipment.



# Visual Communications Technology: Photo/TV

### **2013 EMPLOYERS**

(Not Disclosed)  
ColorCentric Corporation  
Del Monte Corporation  
  
DialAmerica  
Goodwill of the Finger Lakes  
Lancome Cosmetics  
Life's Capturing Moment  
Mark's Pizzeria  
Safeway  
School Pictures Incorporated  
Sutherland Global Services

### **POSITIONS**

(Not Disclosed)  
Printer Operator  
Night Auditor/Cook/Bistro Attendant/Front Desk Associate  
Sales Representative  
Apparel Team Member  
Sales Manager  
Owner  
Assistant Manager  
Floral Manager  
Photographer  
Technical Support Specialist

### **2013 COLLEGES**

(Undecided)  
Rochester Institute of Technology  
SUNY Brockport  
SUNY Buffalo State College  
SUNY University at Buffalo

### **PROGRAMS**

Communications  
Photojournalism  
Journalism & Broadcasting  
Photography  
Photography

## Visual Communications Technology: Photo/TV

	YEAR OF GRADUATION			
	2013	2012	2011	2010
NUMBER RECEIVING DEGREES	33	35	31	30
NUMBER RESPONDING TO SURVEY	15	15	16	14
TOTAL EMPLOYED FULL-TIME	7	7	7	4
NUMBER AND PERCENT OF TOTAL EMPLOYED FULL-TIME IN FIELD	5 (71%)	1 (14%)	3 (43%)	2 (50%)
NUMBER REPORTING SALARIES	3	1	0	0
MEDIAN SALARY	**	**	**	**
SALARY RANGE	**	**	**	**
NUMBER CONTINUING THEIR EDUCATION FULL-TIME	5	2	3	7
NUMBER EMPLOYED / CONTINUING THEIR EDUCATION PART-TIME	1	5	3	3
NUMBER AVAILABLE FOR EMPLOYMENT	0	1	2	0
NUMBER OTHER*	2	0	1	0
NUMBER NON-RESPONDENTS WHO TRANSFERRED (DATA PROVIDED BY THE NATIONAL STUDENT CLEARINGHOUSE)	6	10	5	16

\* Includes those with undecided plans for employment or further education.  
 \*\*Not included if fewer than five respondents reported salaries for full-time employment in their field.

## Visual Communications Technology: Photo/TV

The Visual Communications Technology: Photo/TV program is designed as a specific career path for students interested in gaining professional training in photography, filmmaking, and video. The programs covers visual principles, materials, equipment and processes, audio production techniques, and electronic image creation.



## CAREER CURRICULUM - CERTIFICATE

### Comparison Summary: Career Curriculum - Certificate

	YEAR OF GRADUATION			
	2013	2012	2011	2010
NUMBER RECEIVING DEGREES	198	167	230	180
NUMBER RESPONDING TO SURVEY	83	84	140	111
RESPONSE RATE	42%	50%	61%	62%
TOTAL NUMBER EMPLOYED FULL-TIME	58	47	77	76
NUMBER AND PERCENT OF TOTAL EMPLOYED FULL-TIME IN FIELD	52 (90%)	35 (74%)	68 (88%)	61 (80%)
NUMBER CONTINUING THEIR EDUCATION FULL-TIME	11	11	17	6
NUMBER EMPLOYED / CONTINUING THEIR EDUCATION PART-TIME	9	11	26	17
NUMBER AVAILABLE FOR EMPLOYMENT	4	8	14	8
NUMBER OTHER*	1	7	6	4
NUMBER NON-RESPONDENTS WHO TRANSFERRED (DATA PROVIDED BY THE NATIONAL STUDENT CLEARINGHOUSE)	5	21	26	60

\* Includes those with undecided plans for employment or further education.

# Addictions Counseling - Certificate

### **2013 EMPLOYERS**

Rochester Regional Health System  
U.S. Army Reserves  
U.S. Department of Veterans Affairs

### **POSITIONS**

(Not Disclosed)  
Combat Medic  
Crisis Counselor

### **2013 COLLEGES**

Master's International School of Divinity

### **PROGRAMS**

Urban Ministry

## CAREER CURRICULUM - CERTIFICATE

### Addictions Counseling - Certificate

	YEAR OF GRADUATION			
	2013	2012	2011	2010
NUMBER RECEIVING DEGREES	9	10	1	•
NUMBER RESPONDING TO SURVEY	4	6	1	•
TOTAL NUMBER EMPLOYED FULL-TIME	3	2	0	•
NUMBER AND PERCENT OF TOTAL EMPLOYED FULL-TIME IN FIELD	3 (100%)	1 (50%)	N.A.	•
NUMBER REPORTING SALARIES	2	1	N.A.	•
MEDIAN SALARY	**	**	N.A.	•
SALARY RANGE	**	**	N.A.	•
NUMBER CONTINUING THEIR EDUCATION FULL-TIME	1	0	1	•
NUMBER EMPLOYED / CONTINUING THEIR EDUCATION PART-TIME	0	2	0	•
NUMBER AVAILABLE FOR EMPLOYMENT	0	2	0	•
NUMBER OTHER*	0	0	0	•
NUMBER NON-RESPONDENTS WHO TRANSFERRED (DATA PROVIDED BY THE NATIONAL STUDENT CLEARINGHOUSE)	1	2	0	•

• First certificate awarded in 2011  
N.A. - Information Not Available.

\*\*Not included if fewer than five respondents reported salaries for full-time employment in their field.

### Addictions Counseling - Certificate

This certificate program is intended mainly for students who already have a degree in an associated field, and is designed to qualify graduates to apply for the CASAC-T, the Credentialed Alcohol and Substance Abuse Counselor-in-Training designation. This is the first step toward obtaining the CASAC itself, which in New York State is the appropriate qualification for a career in the substance abuse counseling field. Included in this certificate is course work covering all core functions of an addictions counselor as specified by the New York Office of Alcohol & Substance Abuse Services (OASAS). Also included is a 300 hour internship in a Rochester area addiction-related agency.

# Automotive Technology - Certificate

### **2013 EMPLOYERS**

Browncroft Service Center

### **POSITIONS**

Automotive Technician

### **2013 COLLEGES**

Monroe Community College

### **PROGRAMS**

Automotive Technology

## CAREER CURRICULUM - CERTIFICATE

### Automotive Technology - Certificate

	YEAR OF GRADUATION			
	2013	2012	2011	2010
NUMBER RECEIVING DEGREES	2	1	1	3
NUMBER RESPONDING TO SURVEY	1	1	0	2
TOTAL NUMBER EMPLOYED FULL-TIME	0	1	N.A.	2
NUMBER AND PERCENT OF TOTAL EMPLOYED FULL-TIME IN FIELD	N.A.	1 (100%)	N.A.	2 (100%)
NUMBER REPORTING SALARIES	N.A.	1	N.A.	**
MEDIAN SALARY	N.A.	**	N.A.	**
SALARY RANGE	N.A.	**	N.A.	**
NUMBER CONTINUING THEIR EDUCATION FULL-TIME	1	0	N.A.	0
NUMBER EMPLOYED / CONTINUING THEIR EDUCATION PART-TIME	0	0	N.A.	0
NUMBER AVAILABLE FOR EMPLOYMENT	0	0	N.A.	0
NUMBER OTHER*	0	0	N.A.	0
NUMBER NON-RESPONDENTS WHO TRANSFERRED (DATA PROVIDED BY THE NATIONAL STUDENT CLEARINGHOUSE)	0	0	0	0

N.A. - Information Not Available.

\* Includes those with undecided plans for employment or further education.

\*\*Not included if fewer than five respondents reported salaries for full-time employment in their field.

### Automotive Technology - Certificate

This certificate program is designed to meet the needs of students who want to enter the workforce as soon as possible. This program combines on-the-job training with classroom instruction to prepare students for careers as automotive technicians. As the automotive industry advances with sophisticated technology and responds to the needs and demands of consumerism and legislation, employment opportunities are increasing for technicians.



## CAREER CURRICULUM - CERTIFICATE

### Court Reporting - Certificate

#### **2013 EMPLOYERS**

#### **POSITIONS**

#### **2013 COLLEGES**

#### **PROGRAMS**

## CAREER CURRICULUM - CERTIFICATE

### Court Reporting - Certificate

	YEAR OF GRADUATION			
	2013	2012	2011	2010
NUMBER RECEIVING DEGREES	0	4	9	4
NUMBER RESPONDING TO SURVEY	N.A.	2	6	3
TOTAL NUMBER EMPLOYED FULL-TIME	N.A.	0	3	1
NUMBER AND PERCENT OF TOTAL EMPLOYED FULL-TIME IN FIELD	N.A.	0 (0%)	2 (67%)	0 (0%)
NUMBER REPORTING SALARIES	N.A.	N.A.	1	0
MEDIAN SALARY	N.A.	N.A.	**	N.A.
SALARY RANGE	N.A.	N.A.	**	N.A.
NUMBER CONTINUING THEIR EDUCATION FULL-TIME	N.A.	0	1	0
NUMBER EMPLOYED / CONTINUING THEIR EDUCATION PART-TIME	N.A.	0	1	2
NUMBER AVAILABLE FOR EMPLOYMENT	N.A.	1	1	0
NUMBER OTHER*	N.A.	1	0	0
NUMBER NON-RESPONDENTS WHO TRANSFERRED (DATA PROVIDED BY THE NATIONAL STUDENT CLEARINGHOUSE)	N.A.	0	0	1

\* Includes those with undecided plans for employment or further education.

\*\*Not included if fewer than five respondents reported salaries for full-time employment in their field.

### Court Reporting - Certificate

This certificate program is designed to provide students with the education requirements necessary for application for the New York State licensing examination for Certified Shorthand Reporter. Candidates for this examination must complete three years full-time experience as a verbatim reporter, which may be accomplished by working as a freelance hearing reporter. Prospective court reporters must also pass a civil service examination. The computer-aided transcription skills developed in the program prepare students for employment as verbatim freelance hearing reporters, computer-aided transcriptionists, or computer-aided transcription editors.

NOTE: Students are no longer being admitted into this program.

## CAREER CURRICULUM - CERTIFICATE

### Criminal Justice - Corrections Administration - Certificate

#### **2013 EMPLOYERS**

#### **POSITIONS**

#### **2013 COLLEGES**

#### **PROGRAMS**

## CAREER CURRICULUM - CERTIFICATE

### Criminal Justice - Corrections Administration - Certificate

	YEAR OF GRADUATION			
	2013	2012	2011	2010
NUMBER RECEIVING DEGREES	0	1	•	•
NUMBER RESPONDING TO SURVEY	N.A.	1	•	•
TOTAL NUMBER EMPLOYED FULL-TIME	N.A.	1	•	•
NUMBER AND PERCENT OF TOTAL EMPLOYED FULL-TIME IN FIELD	N.A.	1 (100%)	•	•
NUMBER REPORTING SALARIES	N.A.	1	•	•
MEDIAN SALARY	N.A.	**	•	•
SALARY RANGE	N.A.	**	•	•
NUMBER CONTINUING THEIR EDUCATION FULL-TIME	N.A.	0	•	•
NUMBER EMPLOYED / CONTINUING THEIR EDUCATION PART-TIME	N.A.	0	•	•
NUMBER AVAILABLE FOR EMPLOYMENT	N.A.	0	•	•
NUMBER OTHER*	N.A.	0	•	•
NUMBER NON-RESPONDENTS WHO TRANSFERRED (DATA PROVIDED BY THE NATIONAL STUDENT CLEARINGHOUSE)	N.A.	0	•	•

• First certificate awarded in 2012  
N.A. - Information Not Available

\*Includes those with plans for employment or furthering education

\*\* Not included if fewer than five respondents reported salaries for full-time employment in their field

### Criminal Justice - Corrections Administration - Certificate

This program is offered for in-service officers, as well as students who wish to enter the corrections field. It is designed to provide students with a concentration of courses having a direct relationship to correctional responsibilities.

## CAREER CURRICULUM - CERTIFICATE

### Culinary Arts - Certificate

#### **2013 EMPLOYERS**

UR Medicine

#### **POSITIONS**

Lead Document Imaging Specialist

#### **2013 COLLEGES**

#### **PROGRAMS**

## CAREER CURRICULUM - CERTIFICATE

### Culinary Arts - Certificate

	YEAR OF GRADUATION			
	2013	2012	2011	2010
NUMBER RECEIVING DEGREES	4	9	10	6
NUMBER RESPONDING TO SURVEY	1	4	6	4
TOTAL NUMBER EMPLOYED FULL-TIME	1	1	2	4
NUMBER AND PERCENT OF TOTAL EMPLOYED FULL-TIME IN FIELD	0	1 (100%)	2 (100%)	4 (100%)
NUMBER REPORTING SALARIES	N.A.	1	1	**
MEDIAN SALARY	N.A.	**	**	**
SALARY RANGE	N.A.	**	**	**
NUMBER CONTINUING THEIR EDUCATION FULL-TIME	0	0	0	0
NUMBER EMPLOYED / CONTINUING THEIR EDUCATION PART-TIME	0	2	4	0
NUMBER AVAILABLE FOR EMPLOYMENT	0	0	0	0
NUMBER OTHER*	0	1	0	0
NUMBER NON-RESPONDENTS WHO TRANSFERRED (DATA PROVIDED BY THE NATIONAL STUDENT CLEARINGHOUSE)	0	1	0	2

N.A. - Information Not Available.

\* Includes those with undecided plans for employment or further education.

\*\*Not included if fewer than five respondents reported salaries for full-time employment in their field.

### Culinary Arts - Certificate

This program is for students who are primarily interested in a Food Service concentration without the broad liberal arts background. Graduates of the program have established a basis for a career in the food service industry, and are qualified for at least entry-level positions in any of the production or service areas of the food industry including assistant cook, assistant salad or sandwich person, assistant food preparation person, and in some cases, assistant night manager.

*Note: This certificate program was formerly part of the Food Management/Production certificate program.*

### Dental Assisting - Certificate

#### **2013 EMPLOYERS**

(Not Disclosed)  
Caring Hearts of Rochester  
Dansville Dental Professionals  
David C. Schirmer, DDS  
East Avenue Dentistry  
Edible Arrangements  
Hilton  
Home Depot  
North Country Family Health Center  
Spa at LaBella  
Steven I. Gold, DDS  
Stuart Wieder, DDS

#### **POSITIONS**

(Not Disclosed)  
Certified Nurse's Assistant  
Dental Assistant  
Dental Assistant  
Coordinator  
Bouquet Designer  
Front Desk Attendant  
Sales Associate  
Dental Assistant  
Receptionist  
Certified Dental Assistant  
Dental Assistant

#### **2013 COLLEGES**

Monroe Community College  
SUNY Brockport

#### **PROGRAMS**

Dental Hygiene (5)  
Health Care Administration

## CAREER CURRICULUM - CERTIFICATE

### Dental Assisting - Certificate

	YEAR OF GRADUATION			
	2013	2012	2011	2010
NUMBER RECEIVING DEGREES	34	43	41	37
NUMBER RESPONDING TO SURVEY	12	19	26	19
TOTAL NUMBER EMPLOYED FULL-TIME	5	10	14	11
NUMBER AND PERCENT OF TOTAL EMPLOYED FULL-TIME IN FIELD	5 (100%)	10 (100%)	14 (100%)	11 (100%)
NUMBER REPORTING SALARIES	3	9	8	7
MEDIAN SALARY	**	\$25,000	\$36,000	\$31,000
SALARY RANGE	**	\$16,000 to 52,000	\$14,000 to 50,000	\$20,000 to 49,000
NUMBER CONTINUING THEIR EDUCATION FULL-TIME	5	4	5	3
NUMBER EMPLOYED / CONTINUING THEIR EDUCATION PART-TIME	2	3	7	4
NUMBER AVAILABLE FOR EMPLOYMENT	0	1	0	1
NUMBER OTHER*	0	1	0	0
NUMBER NON-RESPONDENTS WHO TRANSFERRED (DATA PROVIDED BY THE NATIONAL STUDENT CLEARINGHOUSE)	0	5	4	16

\* Includes those with undecided plans for employment or further education.

\*\*Not included if fewer than five respondents reported salaries for full-time employment in their field.

### Dental Assisting - Certificate

This program prepares students for entry-level employment within the dental profession. Students are taught to perform chairside assisting, related laboratory and office procedures, and all delegated functions permitted by the State Education Department. The program is accredited by the Commission on Dental Accreditation of the American Dental Association.



### Early Care - Certificate

#### **2013 EMPLOYERS**

Kids First Childcare  
YMCA of Greater Rochester

#### **POSITIONS**

Day Care Worker  
Site Assistant

#### **2013 COLLEGES**

#### **PROGRAMS**

## CAREER CURRICULUM - CERTIFICATE

### Early Care - Certificate

	YEAR OF GRADUATION			
	2013	2012	2011	2010
NUMBER RECEIVING DEGREES	3	8	5	2
NUMBER RESPONDING TO SURVEY	2	3	3	1
TOTAL NUMBER EMPLOYED FULL-TIME	1	2	2	1
NUMBER AND PERCENT OF TOTAL EMPLOYED FULL-TIME IN FIELD	1 (100%)	1 (50%)	2 (100%)	1 (100%)
NUMBER REPORTING SALARIES	1	1	2	**
MEDIAN SALARY	**	**	**	**
SALARY RANGE	**	**	**	**
NUMBER CONTINUING THEIR EDUCATION FULL-TIME	0	0	1	0
NUMBER EMPLOYED / CONTINUING THEIR EDUCATION PART-TIME	1	0	0	0
NUMBER AVAILABLE FOR EMPLOYMENT	0	0	0	0
NUMBER OTHER*	0	1	0	0
NUMBER NON-RESPONDENTS WHO TRANSFERRED (DATA PROVIDED BY THE NATIONAL STUDENT CLEARINGHOUSE)	0	3	1	1

\* Includes those with undecided plans for employment or further education.  
 \*\*Not included if fewer than five respondents reported salaries for full-time employment in their field.

### Early Care - Certificate

This program provides training for those who work with young children in preschool and pre-kindergarten settings of all kinds. Upon completion of the program, students are prepared to assume positions in child care classrooms, as well as in home-based or center-based child care facilities.

# Electronics Technology - Certificate

### **2013 EMPLOYERS**

Dunkin Donuts  
Lake Image Systems  
Zoetek Medical Sales & Service

### **POSITIONS**

Crew Member  
Applications Engineer  
Biomedical Engineering Technician

### **2013 COLLEGES**

Monroe Community College

### **PROGRAMS**

Business Management

## CAREER CURRICULUM - CERTIFICATE

### Electronics Technology - Certificate

	YEAR OF GRADUATION			
	2013	2012	2011	2010
NUMBER RECEIVING DEGREES	3	1	•	•
NUMBER RESPONDING TO SURVEY	3	1	•	•
TOTAL NUMBER EMPLOYED FULL-TIME	2	1	•	•
NUMBER AND PERCENT OF TOTAL EMPLOYED FULL-TIME IN FIELD	2	0 (0%)	•	•
NUMBER REPORTING SALARIES	2 (100%)	N.A.	•	•
MEDIAN SALARY	**	N.A.	•	•
SALARY RANGE	**	N.A.	•	•
NUMBER CONTINUING THEIR EDUCATION FULL-TIME	1	0	•	•
NUMBER EMPLOYED / CONTINUING THEIR EDUCATION PART-TIME	0	0	•	•
NUMBER AVAILABLE FOR EMPLOYMENT	0	0	•	•
NUMBER OTHER*	0	0	•	•
NUMBER NON-RESPONDENTS WHO TRANSFERRED (DATA PROVIDED BY THE NATIONAL STUDENT CLEARINGHOUSE)	0	0	•	•

• First certificate awarded in 2012  
N.A. - Information Not Available

\*Includes those with plans for employment or furthering education

### Electronics Technology - Certificate

This program provides an intermediate recognition for those pursuing the A.A.S. degree, as well as for those desiring only special groups of Electronics courses.

### Emergency Medical Services - Certificate

#### **2013 EMPLOYERS**

(Not Disclosed)  
Rural/Metro Corporation

#### **POSITIONS**

(Not Disclosed)  
EMT-Basic

#### **2013 COLLEGES**

Monroe Community College

#### **PROGRAMS**

Liberal Arts - Pre-Pharmacy

## CAREER CURRICULUM - CERTIFICATE

### Emergency Medical Services - Certificate

	YEAR OF GRADUATION			
	2013	2012	2011	2010
NUMBER RECEIVING DEGREES	2	1	0	1
NUMBER RESPONDING TO SURVEY	2	0	N.A.	0
TOTAL NUMBER EMPLOYED FULL-TIME	0	N.A.	N.A.	N.A.
NUMBER AND PERCENT OF TOTAL EMPLOYED FULL-TIME IN FIELD	N.A.	N.A.	N.A.	N.A.
NUMBER REPORTING SALARIES	N.A.	N.A.	N.A.	N.A.
MEDIAN SALARY	N.A.	N.A.	N.A.	N.A.
SALARY RANGE	N.A.	N.A.	N.A.	N.A.
NUMBER CONTINUING THEIR EDUCATION FULL-TIME	1	N.A.	N.A.	N.A.
NUMBER EMPLOYED / CONTINUING THEIR EDUCATION PART-TIME	1	N.A.	N.A.	N.A.
NUMBER AVAILABLE FOR EMPLOYMENT	0	N.A.	N.A.	N.A.
NUMBER OTHER*	0	N.A.	N.A.	N.A.
NUMBER NON-RESPONDENTS WHO TRANSFERRED (DATA PROVIDED BY THE NATIONAL STUDENT CLEARINGHOUSE)	0	0	N.A.	1

N.A. - Information Not Available.

\* Includes those with undecided plans for employment or further education.

\*\*Not included if fewer than five respondents reported salaries for full-time employment in their field.

### Emergency Medical Services - Certificate

This certificate program is intended for students interested in preparing for entry in the emergency medical services field. It is also for students in the emergency medical services field who are expanding their knowledge and skills to better prepare for advancement within the field or to complete the Paramedic Certificate or Associates Degree Program.

## CAREER CURRICULUM - CERTIFICATE

### Food Management - Certificate

#### **2013 EMPLOYERS**

#### **POSITIONS**

#### **2013 COLLEGES**

#### **PROGRAMS**

## CAREER CURRICULUM - CERTIFICATE

### Food Management - Certificate

	YEAR OF GRADUATION			
	2013	2012	2011	2010
NUMBER RECEIVING DEGREES	1	1	1	1
NUMBER RESPONDING TO SURVEY	0	0	1	1
TOTAL NUMBER EMPLOYED FULL-TIME	N.A.	0	1	0
NUMBER AND PERCENT OF TOTAL EMPLOYED FULL-TIME IN FIELD	N.A.	0 (0%)	1 (100%)	N.A.
NUMBER REPORTING SALARIES	N.A.	N.A.	0	N.A.
MEDIAN SALARY	N.A.	N.A.	**	N.A.
SALARY RANGE	N.A.	N.A.	**	N.A.
NUMBER CONTINUING THEIR EDUCATION FULL-TIME	N.A.	0	0	1
NUMBER EMPLOYED / CONTINUING THEIR EDUCATION PART-TIME	N.A.	0	0	0
NUMBER AVAILABLE FOR EMPLOYMENT	N.A.	0	0	0
NUMBER OTHER*	N.A.	0	0	0
NUMBER NON-RESPONDENTS WHO TRANSFERRED (DATA PROVIDED BY THE NATIONAL STUDENT CLEARINGHOUSE)	1	1	0	0

### Food Management - Certificate

This program is designed for students who have sufficient work experience in the production and service areas of the food industry who would like to gain a deeper insight into food management areas for job enrichment, promotional consideration, or possible future positions.

*Note: This certificate program was formerly part of the Food Management/Production certificate program.*



# Heating, Ventilation & Air Conditioning - Certificate

**2013 EMPLOYERS**

PICS Telecom

**POSITIONS**

Dock Team Leader

**2013 COLLEGES**

Monroe Community College

**PROGRAMS**

HVAC

## CAREER CURRICULUM - CERTIFICATE

### Heating, Ventilation & Air Conditioning - Certificate

	YEAR OF GRADUATION			
	2013	2012	2011	2010
NUMBER RECEIVING DEGREES	17	21	22	12
NUMBER RESPONDING TO SURVEY	2	17	14	9
TOTAL NUMBER EMPLOYED FULL-TIME	1	8	6	6
NUMBER AND PERCENT OF TOTAL EMPLOYED FULL-TIME IN FIELD	0 (0%)	5 (63%)	4 (67%)	5 (83%)
NUMBER REPORTING SALARIES	N.A.	5	3	5
MEDIAN SALARY	N.A.	\$36,000	**	\$27,000
SALARY RANGE	N.A.	\$20,800 to 50,000	**	\$21,000 to 40,000
NUMBER CONTINUING THEIR EDUCATION FULL-TIME	0	1	1	0
NUMBER EMPLOYED / CONTINUING THEIR EDUCATION PART-TIME	0	3	3	1
NUMBER AVAILABLE FOR EMPLOYMENT	1	3	4	2
NUMBER OTHER*	0	2	0	0
NUMBER NON-RESPONDENTS WHO TRANSFERRED (DATA PROVIDED BY THE NATIONAL STUDENT CLEARINGHOUSE)	0	1	2	2

\* Includes those with undecided plans for employment or further education.

\*\*Not included if fewer than five respondents reported salaries for full-time employment in their field.

### Heating, Ventilation & Air Conditioning - Certificate

The Heating, Ventilating, Air Conditioning certificate program is designed both for students who are seeking entry level positions as preventative maintenance mechanics or installation/service technicians, and those currently employed in the field of heating, ventilating, and air conditioning or related areas.

## CAREER CURRICULUM - CERTIFICATE

### Hotel Management - Certificate

#### **2013 EMPLOYERS**

#### **POSITIONS**

#### **2013 COLLEGES**

#### **PROGRAMS**

## CAREER CURRICULUM - CERTIFICATE

### Hotel Management - Certificate

	YEAR OF GRADUATION			
	2013	2012	2011	2010
NUMBER RECEIVING DEGREES	1	0	1	5
NUMBER RESPONDING TO SURVEY	1	N.A.	1	2
TOTAL NUMBER EMPLOYED FULL-TIME	0	N.A.	0	2
NUMBER AND PERCENT OF TOTAL EMPLOYED FULL-TIME IN FIELD	N.A.	N.A.	0 (0%)	2 (100%)
NUMBER REPORTING SALARIES	N.A.	N.A.	N.A.	**
MEDIAN SALARY	N.A.	N.A.	N.A.	**
SALARY RANGE	N.A.	N.A.	N.A.	**
NUMBER CONTINUING THEIR EDUCATION FULL-TIME	0	N.A.	0	0
NUMBER EMPLOYED / CONTINUING THEIR EDUCATION PART-TIME	0	N.A.	0	0
NUMBER AVAILABLE FOR EMPLOYMENT	1	N.A.	0	0
NUMBER OTHER*	0	N.A.	1	0
NUMBER NON-RESPONDENTS WHO TRANSFERRED (DATA PROVIDED BY THE NATIONAL STUDENT CLEARINGHOUSE)	0	N.A.	0	3

N.A. - Information Not Available.

\* Includes those with undecided plans for employment or further education.

\*\*Not included if fewer than five respondents reported salaries for full-time employment in their field.

### Hotel Management - Certificate

This program is designed for students who are primarily interested in a hotel management concentration without the broad liberal arts background. Graduates of this program have established a basis for a career in the hotel industry, and are qualified for at least entry-level positions in this career field in the areas of front office, reservations, concierge, housekeeping, and food and beverage within a hotel.

### Human Services - Certificate

#### **2013 EMPLOYERS**

Heritage Christian Services

#### **POSITIONS**

Direct Support Professional

#### **2013 COLLEGES**

Roberts Wesleyan College

#### **PROGRAMS**

Health Administration

## CAREER CURRICULUM - CERTIFICATE

### Human Services - Certificate

	YEAR OF GRADUATION			
	2013	2012	2011	2010
NUMBER RECEIVING DEGREES	3	1	5	7
NUMBER RESPONDING TO SURVEY	1	1	3	6
TOTAL NUMBER EMPLOYED FULL-TIME	0	1	0	2
NUMBER AND PERCENT OF TOTAL EMPLOYED FULL-TIME IN FIELD	0 (0%)	0 (0%)	0 (0%)	1 (50%)
NUMBER REPORTING SALARIES	N.A.	N.A.	N.A.	**
MEDIAN SALARY	N.A.	N.A.	N.A.	**
SALARY RANGE	N.A.	N.A.	N.A.	**
NUMBER CONTINUING THEIR EDUCATION FULL-TIME	1	0	0	1
NUMBER EMPLOYED / CONTINUING THEIR EDUCATION PART-TIME	0	0	1	3
NUMBER AVAILABLE FOR EMPLOYMENT	0	0	1	0
NUMBER OTHER*	0	0	1	0
NUMBER NON-RESPONDENTS WHO TRANSFERRED (DATA PROVIDED BY THE NATIONAL STUDENT CLEARINGHOUSE)	0	0	1	1

\* Includes those with undecided plans for employment or further education.  
 \*\*Not included if fewer than five respondents reported salaries for full-time employment in their field.

### Human Services - Certificate

The certificate program is designed for men and women who want to learn the skills and attitudes that are needed for employment and upgrading in human service positions, but who do not want to undertake the supporting academic courses required for the college degree.

## CAREER CURRICULUM - CERTIFICATE

### Interior Design - Certificate

#### **2013 EMPLOYERS**

#### **POSITIONS**

#### **2013 COLLEGES**

#### **PROGRAMS**

## CAREER CURRICULUM - CERTIFICATE

### Interior Design - Certificate

	YEAR OF GRADUATION			
	2013	2012	2011	2010
NUMBER RECEIVING DEGREES	1	2	1	1
NUMBER RESPONDING TO SURVEY	0	2	0	0
TOTAL NUMBER EMPLOYED FULL-TIME	N.A.	2	N.A.	N.A.
NUMBER AND PERCENT OF TOTAL EMPLOYED FULL-TIME IN FIELD	N.A.	2 (100%)	N.A.	N.A.
NUMBER REPORTING SALARIES	N.A.	1	N.A.	N.A.
MEDIAN SALARY	N.A.	**	N.A.	N.A.
SALARY RANGE	N.A.	**	N.A.	N.A.
NUMBER CONTINUING THEIR EDUCATION FULL-TIME	N.A.	0	N.A.	0
NUMBER EMPLOYED / CONTINUING THEIR EDUCATION PART-TIME	N.A.	0	N.A.	0
NUMBER AVAILABLE FOR EMPLOYMENT	N.A.	0	N.A.	0
NUMBER OTHER*	N.A.	0	N.A.	0
NUMBER NON-RESPONDENTS WHO TRANSFERRED (DATA PROVIDED BY THE NATIONAL STUDENT CLEARINGHOUSE)	1	0	0	1

N.A. - Information Not Available.

\* Includes those with undecided plans for employment or further education.

### Interior Design - Certificate

The Interior Design Certificate is designed to provide the basic skills and knowledge required to enter the interior design field as a design assistant. It also provides those working in the retail sector a deeper insight into other aspects of the field while attaining the skills necessary to enter other areas of interior design.



### Law Enforcement - Certificate

#### **2013 EMPLOYERS**

(Not Disclosed)  
Batavia Police Department  
City of Rochester  
Monroe County Sheriff's Office  
Rochester Institute of Technology  
Town of Irondequoit  
Town of West Seneca, NY

#### **POSITIONS**

Deputy Sheriff  
Police Officer  
Police Officer (7)  
Deputy Sheriff (5); Police Officer (2); Sheriff Patrol Officer  
Public Safety Officer (2)  
Police Officer  
Police Officer

#### **2013 COLLEGES**

Keuka College  
Monroe Community College  
SUNY University at Buffalo

#### **PROGRAMS**

Criminal Justice  
Police Science (2)  
Criminal Justice

## CAREER CURRICULUM - CERTIFICATE

### Law Enforcement - Certificate

	YEAR OF GRADUATION			
	2013	2012	2011	2010
NUMBER RECEIVING DEGREES	59	0	61	48
NUMBER RESPONDING TO SURVEY	22	N.A.	30	28
TOTAL NUMBER EMPLOYED FULL-TIME	21	N.A.	29	27
NUMBER AND PERCENT OF TOTAL EMPLOYED FULL-TIME IN FIELD	20 (95%)	N.A.	26 (90%)	26 (96%)
NUMBER REPORTING SALARIES	18	N.A.	13	14
MEDIAN SALARY	\$57,000	N.A.	\$50,000	\$53,500
SALARY RANGE	\$30,000 to 75,000	N.A.	\$35,000 to 57,000	\$37,000 to 70,000
NUMBER CONTINUING THEIR EDUCATION FULL-TIME	0	N.A.	1	0
NUMBER EMPLOYED / CONTINUING THEIR EDUCATION PART-TIME	0	N.A.	0	0
NUMBER AVAILABLE FOR EMPLOYMENT	1	N.A.	0	1
NUMBER OTHER*	0	N.A.	0	0
NUMBER NON-RESPONDENTS WHO TRANSFERRED (DATA PROVIDED BY THE NATIONAL STUDENT CLEARINGHOUSE)	2	N.A.	12	16

\* Includes those with undecided plans for employment or further education.

### Law Enforcement - Certificate

This certificate program in law enforcement develops the knowledge, skills and abilities in the law, the process of the criminal justice system, the scientific method of criminal investigation, applied psychology, report writing, interpersonal communication skills, human interaction techniques, and the career specific physical and judgmental skills necessary for law enforcement professionals.

## CAREER CURRICULUM - CERTIFICATE

### Mathematics - Certificate

#### **2013 EMPLOYERS**

#### **POSITIONS**

#### **2013 COLLEGES**

#### **PROGRAMS**

## CAREER CURRICULUM - CERTIFICATE

### Mathematics - Certificate

	YEAR OF GRADUATION			
	2013	2012	2011	2010
NUMBER RECEIVING DEGREES	1	3	4	•
NUMBER RESPONDING TO SURVEY	0	2	4	•
TOTAL NUMBER EMPLOYED FULL-TIME	N.A.	0	0	•
NUMBER AND PERCENT OF TOTAL EMPLOYED FULL-TIME IN FIELD	N.A.	0 (0%)	N.A.	•
NUMBER REPORTING SALARIES	N.A.	N.A.	N.A.	•
MEDIAN SALARY	N.A.	N.A.	N.A.	•
SALARY RANGE	N.A.	N.A.	N.A.	•
NUMBER CONTINUING THEIR EDUCATION FULL-TIME	N.A.	2	2	•
NUMBER EMPLOYED / CONTINUING THEIR EDUCATION PART-TIME	N.A.	0	1	•
NUMBER AVAILABLE FOR EMPLOYMENT	N.A.	0	0	•
NUMBER OTHER*	N.A.	0	1	•
NUMBER NON-RESPONDENTS WHO TRANSFERRED (DATA PROVIDED BY THE NATIONAL STUDENT CLEARINGHOUSE)	1	1	0	•

• First certificate awarded in 2011

\* Includes those with undecided plans for employment or further education.

\*\*Not included if fewer than five respondents reported salaries for full-time employment in their field.

### Mathematics - Certificate

The Mathematics Certificate is for students who wish to demonstrate a high level of preparation in Mathematics to four-year schools. A student who obtains this certificate has completed courses forming a foundation towards a four-year degree in Mathematics or a related field.

## Medical Transcription - Certificate

**2013 EMPLOYERS**

**POSITIONS**

**2013 COLLEGES**

**PROGRAMS**

## CAREER CURRICULUM - CERTIFICATE

### Medical Transcription - Certificate

	YEAR OF GRADUATION			
	2013	2012	2011	2010
NUMBER RECEIVING DEGREES	0	0	1	4
NUMBER RESPONDING TO SURVEY	N.A.	N.A.	0	3
TOTAL NUMBER EMPLOYED FULL-TIME	N.A.	N.A.	N.A.	0
NUMBER AND PERCENT OF TOTAL EMPLOYED FULL-TIME IN FIELD	N.A.	N.A.	N.A.	0 (0%)
NUMBER REPORTING SALARIES	N.A.	N.A.	N.A.	N.A.
MEDIAN SALARY	N.A.	N.A.	N.A.	N.A.
SALARY RANGE	N.A.	N.A.	N.A.	N.A.
NUMBER CONTINUING THEIR EDUCATION FULL-TIME	N.A.	N.A.	N.A.	0
NUMBER EMPLOYED / CONTINUING THEIR EDUCATION PART-TIME	N.A.	N.A.	N.A.	2
NUMBER AVAILABLE FOR EMPLOYMENT	N.A.	N.A.	N.A.	0
NUMBER OTHER*	N.A.	N.A.	N.A.	1
NUMBER NON-RESPONDENTS WHO TRANSFERRED (DATA PROVIDED BY THE NATIONAL STUDENT CLEARINGHOUSE)	N.A.	N.A.	0	1

\* First certificate awarded in 2012.

\* Includes those with undecided plans for employment or further education.

\*\*Not included if fewer than five respondents reported salaries for full-time employment in their field.

### Medical Transcription - Certificate

This one year certificate program prepares students to function as professional medical transcriptionists. Students receive a basic understanding of the language of medicine, advanced skills in word processing and technology, and technical skills in transcription equipment and processes. Upon completion of the program, students are prepared for careers in the medical transcription field including working in physicians offices, hospitality and outpatient clinics, insurance companies, private dictation services, or as independent contractors.

### Office Technology - Certificate

#### **2013 EMPLOYERS**

(Undisclosed Hospital)  
Adams Technologies  
All Metro Health Care  
Arc of Monroe  
Bank of America  
Elizabeth Wende Breast Care  
James Amborski, DDS  
Lifetime Health Medical Group  
Maximus Federal Services  
Monroe Community College  
Rite Aid Pharmacy

#### **POSITIONS**

(Not Disclosed)  
Sales Engineer  
Payroll Coordinator  
Administrative Assistant  
Sales & Service Specialist  
Front Desk Specialist  
Office Assistant  
Patient Services Representative  
Operations Clerk  
Staff Assistant  
(Not Disclosed)

#### **2013 COLLEGES**

Monroe Community College

#### **PROGRAMS**

American Sign Language-English Interpreting

## CAREER CURRICULUM - CERTIFICATE

### Office Technology - Certificate

	YEAR OF GRADUATION			
	2013	2012	2011	2010
NUMBER RECEIVING DEGREES	22	12	21	4
NUMBER RESPONDING TO SURVEY	13	7	11	3
TOTAL NUMBER EMPLOYED FULL-TIME	8	4	1	1
NUMBER AND PERCENT OF TOTAL EMPLOYED FULL-TIME IN FIELD	7 (88%)	2 (50%)	0 (0%)	0 (0%)
NUMBER REPORTING SALARIES	7	2	N.A.	N.A.
MEDIAN SALARY	\$25,000	**	N.A.	N.A.
SALARY RANGE	\$12,500 to 50,000	**	N.A.	N.A.
NUMBER CONTINUING THEIR EDUCATION FULL-TIME	0	1	1	0
NUMBER EMPLOYED / CONTINUING THEIR EDUCATION PART-TIME	3	1	6	1
NUMBER AVAILABLE FOR EMPLOYMENT	1	0	2	0
NUMBER OTHER*	1	1	1	1
NUMBER NON-RESPONDENTS WHO TRANSFERRED (DATA PROVIDED BY THE NATIONAL STUDENT CLEARINGHOUSE)	0	1	4	1

N.A. - Information Not Available.

\* Includes those with undecided plans for employment or further education.

\*\*Not included if fewer than five respondents reported salaries for full-time employment in their field.

### Office Technology - Certificate

There are three different tracks for students in the Office Technology certificate program. The Office Clerk track prepares students for an entry-level office position involving routine and repetitive clerical tasks. The Medical Office Assistant track is designed to provide students with a firm foundation for the medical office environment. The Specialist track is a highly intensive program designed to enhance existing computer software application skills.



### Paralegal Studies - Certificate

#### **2013 EMPLOYERS**

(Undisclosed Law Firm)  
Excellus Blue Cross/Blue Shield  
Nixon Peabody LLP  
Paychex  
Penfield Town Court  
Piede Law LLP

#### **POSITIONS**

Legal Assistant  
Marketing & Sales Strategic Analyst  
Legal Support Assistant  
Communications Representative - Team Lead  
Court Clerk  
Paralegal

#### **2013 COLLEGES**

#### **PROGRAMS**

## CAREER CURRICULUM - CERTIFICATE

### Paralegal Studies - Certificate

	YEAR OF GRADUATION			
	2013	2012	2011	2010
NUMBER RECEIVING DEGREES	12	21	22	21
NUMBER RESPONDING TO SURVEY	6	9	15	16
TOTAL NUMBER EMPLOYED FULL-TIME	5	9	10	9
NUMBER AND PERCENT OF TOTAL EMPLOYED FULL-TIME IN FIELD	5 (100%)	6 (67%)	9 (90%)	4 (44%)
NUMBER REPORTING SALARIES	3	4	3	**
MEDIAN SALARY	**	**	**	**
SALARY RANGE	**	**	**	**
NUMBER CONTINUING THEIR EDUCATION FULL-TIME	0	0	0	0
NUMBER EMPLOYED / CONTINUING THEIR EDUCATION PART-TIME	1	0	1	2
NUMBER AVAILABLE FOR EMPLOYMENT	0	0	4	3
NUMBER OTHER*	0	0	0	2
NUMBER NON-RESPONDENTS WHO TRANSFERRED (DATA PROVIDED BY THE NATIONAL STUDENT CLEARINGHOUSE)	0	0	0	5

\* Includes those with undecided plans for employment or further education.

\*\*Not included if fewer than five respondents reported salaries for full-time employment in their field.

### Paralegal Studies - Certificate

The Paralegal Studies Certificate program prepares students for entry-level employment as professional paralegals. Professional level paralegals work under the supervision of a lawyer researching the law, investigating facts, preparing drafts of legal documents, and working with clients. They are employed in almost all areas where law-related work is performed, i.e., private law firms, government agencies, insurance companies and corporations.

## CAREER CURRICULUM - CERTIFICATE

### Paramedic - Certificate

#### **2013 EMPLOYERS**

#### **POSITIONS**

#### **2013 COLLEGES**

#### **PROGRAMS**

## CAREER CURRICULUM - CERTIFICATE

### Paramedic - Certificate

	YEAR OF GRADUATION			
	2013	2012	2011	2010
NUMBER RECEIVING DEGREES	0	11	•	•
NUMBER RESPONDING TO SURVEY	N.A.	2	•	•
TOTAL NUMBER EMPLOYED FULL-TIME	N.A.	2	*	•
NUMBER AND PERCENT OF TOTAL EMPLOYED FULL-TIME IN FIELD	N.A.	2 (100%)	*	•
NUMBER REPORTING SALARIES	N.A.	1	*	•
MEDIAN SALARY	N.A.	**	*	•
SALARY RANGE	N.A.	**	*	•
NUMBER CONTINUING THEIR EDUCATION FULL-TIME	N.A.	0	•	•
NUMBER EMPLOYED / CONTINUING THEIR EDUCATION PART-TIME	N.A.	0	•	•
NUMBER AVAILABLE FOR EMPLOYMENT	N.A.	0	•	•
NUMBER OTHER*	N.A.	0	•	•
NUMBER NON-RESPONDENTS WHO TRANSFERRED (DATA PROVIDED BY THE NATIONAL STUDENT CLEARINGHOUSE)	N.A.	2	•	•

• First certificate awarded in 2012

\*Includes those with plans for employment or furthering education

\*\*Not included if fewer than five respondents reported salaries for full-time employment in their field

### Paramedic - Certificate

This program prepares an individual for admission to the New York State Health Department examinations for certification as a paramedic. The paramedic certification course sequence includes classroom, hands-on skill development, hospital clinical experience, and field internships. This program includes only the courses required for admission to the New York State Department of Health Paramedic certification exams. It is accredited by the Commission on Accreditation of Allied Health Education Programs ([www.caahep.org](http://www.caahep.org)).

Precision Machining/Optical Fabrication - Certificate

<b><u>2013 EMPLOYERS</u></b>	<b><u>POSITIONS</u></b>
Jrlon, Inc.	Machinist

<b><u>2013 COLLEGES</u></b>	<b><u>PROGRAMS</u></b>
-----------------------------	------------------------

## CAREER CURRICULUM - CERTIFICATE

### Precision Machining/Optical Fabrication - Certificate

	YEAR OF GRADUATION			
	2013	2012	2011	2010
NUMBER RECEIVING DEGREES	2	12	14	15
NUMBER RESPONDING TO SURVEY	1	6	11	11
TOTAL NUMBER EMPLOYED FULL-TIME	1	3	8	9
NUMBER AND PERCENT OF TOTAL EMPLOYED FULL-TIME IN FIELD	1 (100%)	3 (100%)	7 (88%)	5 (56%)
NUMBER REPORTING SALARIES	0	3	6	5
MEDIAN SALARY	N.A.	**	\$29,000	\$33,280
SALARY RANGE	N.A.	**	\$27,040 to 40,000	\$25,000 to 80,000
NUMBER CONTINUING THEIR EDUCATION FULL-TIME	0	2	1	1
NUMBER EMPLOYED / CONTINUING THEIR EDUCATION PART-TIME	0	0	0	0
NUMBER AVAILABLE FOR EMPLOYMENT	0	1	0	1
NUMBER OTHER*	0	0	2	0
NUMBER NON-RESPONDENTS WHO TRANSFERRED (DATA PROVIDED BY THE NATIONAL STUDENT CLEARINGHOUSE)	0	3	1	4

\* Includes those with undecided plans for employment or further education.  
 \*\*Not included if fewer than five respondents reported salaries for full-time employment in their field.

### Precision Machining/Optical Fabrication - Certificate

This certificate program is designed to prepare students for employment in the precision metal-working industry in Monroe County and the Finger Lakes Region of New York State. Included in this certificate are course work and hands-on skills development necessary to enter apprenticeship programs in mold making, machine building, tool and die making, or entry-level employment in other facets of the precision machining industry.

### Precision Tooling - Certificate

#### **2013 EMPLOYERS**

Allstate Tool & Die  
Apollo Optical Systems  
Eastman Kodak  
Heany, Inc.  
Ingleside Machine Company, Inc.  
Jabberwock Reptiles  
Lane Industries  
Ortho-Clinical Diagnostics, Inc.  
Pfaudler, Inc.

#### **POSITIONS**

Machinist / CNC Set-Up Trainee  
Single-Point Diamond Turning Associate  
Quality Technician  
Aerospace Coating Technician  
CNC Machinist  
Retail Sales Clerk  
Machinist  
Process Mechanic II  
Machinist/Fabricator

#### **2013 COLLEGES**

Monroe Community College  
SUNY Finger Lakes Community College

#### **PROGRAMS**

Mechanical Engineering Technology; Precision Machining  
Business Management

## CAREER CURRICULUM - CERTIFICATE

### Precision Tooling - Certificate

	YEAR OF GRADUATION			
	2013	2012	2011	2010
NUMBER RECEIVING DEGREES	17	12	13	14
NUMBER RESPONDING TO SURVEY	10	6	10	10
TOTAL NUMBER EMPLOYED FULL-TIME	8	4	7	8
NUMBER AND PERCENT OF TOTAL EMPLOYED FULL-TIME IN FIELD	7 (88%)	3 (75%)	7 (100%)	5 (63%)
NUMBER REPORTING SALARIES	6	3	6	4
MEDIAN SALARY	\$34,660	**	\$31,640	**
SALARY RANGE	\$30,160 to 62,000	**	\$24,040 to 40,000	**
NUMBER CONTINUING THEIR EDUCATION FULL-TIME	1	1	1	1
NUMBER EMPLOYED / CONTINUING THEIR EDUCATION PART-TIME	1	0	0	0
NUMBER AVAILABLE FOR EMPLOYMENT	0	1	0	1
NUMBER OTHER*	0	0	2	0
NUMBER NON-RESPONDENTS WHO TRANSFERRED (DATA PROVIDED BY THE NATIONAL STUDENT CLEARINGHOUSE)	0	3	1	2

N.A. - Information Not Available.

\* Includes those with undecided plans for employment or further education.

\*\*Not included if fewer than five respondents reported salaries for full-time employment in their field.

### Precision Tooling - Certificate

This certificate program is designed to prepare graduates for employment in the precision metal-working industry in Monroe County and the Finger Lakes Region of New York State. Included in this certificate is the course work and hands-on skills development necessary to enter apprenticeship programs in mold making, machine building, tool and die making, or employment in production machining. Students enrolling in this program can also prepare for majors in the mechanical, quality, or manufacturing programs offered at Monroe Community College.

All TAM courses are approved as technical related instruction by the Bureau of Apprenticeship Training and used by the area's local manufacturers as a means of educating current employees.

*Students interested in this program may also be interested in the Apprentice Training: Machine Trades program.*



## CAREER CURRICULUM - CERTIFICATE

### Small Business Management - Certificate

#### **2013 EMPLOYERS**

Dawn Homes Management

#### **POSITIONS**

Property Manager

#### **2013 COLLEGES**

#### **PROGRAMS**

## CAREER CURRICULUM - CERTIFICATE

### Small Business Management - Certificate

	YEAR OF GRADUATION			
	2013	2012	2011	2010
NUMBER RECEIVING DEGREES	2	2	1	5
NUMBER RESPONDING TO SURVEY	1	0	1	2
TOTAL NUMBER EMPLOYED FULL-TIME	1	N.A.	1	1
NUMBER AND PERCENT OF TOTAL EMPLOYED FULL-TIME IN FIELD	1 (100%)	N.A.	1 (100%)	0 (0%)
NUMBER REPORTING SALARIES	0	N.A.	0	N.A.
MEDIAN SALARY	N.A.	N.A.	N.A.	N.A.
SALARY RANGE	N.A.	N.A.	N.A.	N.A.
NUMBER CONTINUING THEIR EDUCATION FULL-TIME	0	N.A.	0	0
NUMBER EMPLOYED / CONTINUING THEIR EDUCATION PART-TIME	0	N.A.	0	1
NUMBER AVAILABLE FOR EMPLOYMENT	0	N.A.	0	0
NUMBER OTHER*	0	N.A.	0	0
NUMBER NON-RESPONDENTS WHO TRANSFERRED (DATA PROVIDED BY THE NATIONAL STUDENT CLEARINGHOUSE)	0	0	3	

N.A. - Information Not Available.

\* Includes those with undecided plans for employment or further education.

\*\*Not included if fewer than five respondents reported salaries for full-time employment in their field.

### Small Business Management - Certificate

Small Business Management is a certificate program designed to aid students already engaged in the operation of small business units by providing basic knowledge in the fields of accounting, marketing, management, and economics.

Teaching Assistant - Certificate

<b>2013 EMPLOYERS</b>	<b>POSITIONS</b>
(Not Disclosed)	(Not Disclosed)

<b>2013 COLLEGES</b>	<b>PROGRAMS</b>
----------------------	-----------------

## CAREER CURRICULUM - CERTIFICATE

### Teaching Assistant - Certificate

	YEAR OF GRADUATION			
	2013	2012	2011	2010
NUMBER RECEIVING DEGREES	2	1	8	1
NUMBER RESPONDING TO SURVEY	1	0	6	0
TOTAL NUMBER EMPLOYED FULL-TIME	1	0	0	N.A.
NUMBER AND PERCENT OF TOTAL EMPLOYED FULL-TIME IN FIELD	0 (0%)	N.A.	N.A.	N.A.
NUMBER REPORTING SALARIES	N.A.	N.A.	N.A.	N.A.
MEDIAN SALARY	N.A.	N.A.	N.A.	N.A.
SALARY RANGE	N.A.	N.A.	N.A.	N.A.
NUMBER CONTINUING THEIR EDUCATION FULL-TIME	0	N.A.	3	N.A.
NUMBER EMPLOYED / CONTINUING THEIR EDUCATION PART-TIME	0	N.A.	1	N.A.
NUMBER AVAILABLE FOR EMPLOYMENT	0	N.A.	2	N.A.
NUMBER OTHER*	0	N.A.	0	N.A.
NUMBER NON-RESPONDENTS WHO TRANSFERRED (DATA PROVIDED BY THE NATIONAL STUDENT CLEARINGHOUSE)	1	1	1	1

N.A. - Information Not Available.

\* Includes those with undecided plans for employment or furthering education.

### Teaching Assistant - Certificate

This program prepares students with the required coursework for a successful career as a Teaching Assistant/ Paraprofessional. It provides an opportunity for teaching assistants and individuals interested in K-12 education to begin their higher education in a gradual and supportive manner. The program fulfills the college credit hour requirements for New York State level II, III and pre-professional Teaching Assistant Certificate. The certificate will also transfer into an Associate of Arts Teacher Education Degree leading to a baccalaureate degree and NYS Teacher Certification for students interested in pursuing teaching as a career.

This course of study provides students with the opportunity to experience the basic fundamentals of teaching in the classroom while studying various integral aspects of the profession. The course of study also provides students with a balance of course work between completing education classes, general education coursework, and elective coursework.

Graduates of this program receive a solid foundation in both the liberal arts and sciences as well as the educational functions of teaching assistants and may find employment in preschool, elementary and secondary schools.

## Travel & Tourism - Certificate

### **2013 EMPLOYERS**

### **POSITIONS**

### **2013 COLLEGES**

### **PROGRAMS**

## CAREER CURRICULUM - CERTIFICATE

### Travel & Tourism - Certificate

	YEAR OF GRADUATION			
	2013	2012	2011	2010
NUMBER RECEIVING DEGREES	1	1	1	3
NUMBER RESPONDING TO SURVEY	0	0	1	1
TOTAL NUMBER EMPLOYED FULL-TIME	0	0	0	0
NUMBER AND PERCENT OF TOTAL EMPLOYED FULL-TIME IN FIELD	N.A.	N.A.	N.A.	N.A.
NUMBER REPORTING SALARIES	N.A.	N.A.	N.A.	N.A.
MEDIAN SALARY	N.A.	N.A.	N.A.	N.A.
SALARY RANGE	N.A.	N.A.	N.A.	N.A.
NUMBER CONTINUING THEIR EDUCATION FULL-TIME	0	N.A.	0	0
NUMBER EMPLOYED / CONTINUING THEIR EDUCATION PART-TIME	0	N.A.	1	1
NUMBER AVAILABLE FOR EMPLOYMENT	0	N.A.	0	0
NUMBER OTHER*	0	N.A.	0	0
NUMBER NON-RESPONDENTS WHO TRANSFERRED (DATA PROVIDED BY THE NATIONAL STUDENT CLEARINGHOUSE)	0	0	0	1

N.A. - Information Not Available.

\* Includes those with undecided plans for employment or further education.

\*\*Not included if fewer than five respondents reported salaries for full-time employment in their field.

### Travel & Tourism - Certificate

This program is designed for students who are primarily interested in a travel and tourism concentration without the broad liberal arts background. Graduates of this program have established a basis for a career in the travel and tourism industry, and are qualified for at least entry-level positions in tour companies, travel agencies, tourism bureaus, cruise lines, car rental companies, and hotels.



# Monroe Community College

STATE UNIVERSITY OF NEW YORK

## Brighton Campus

1000 East Henrietta Road  
Rochester, NY 14623  
585.292.2200



## Damon City Campus

228 East Main Street  
Rochester, NY 14604  
585.262.1740



## Applied Technologies Center

2485 West Henrietta Road  
Rochester, NY 14623  
585.292.3700



## Public Safety Training Facility

1190 Scottsville Road  
Rochester, NY 14624  
585.753.3800



[www.monroecc.edu](http://www.monroecc.edu)

Monroe Community College is committed to fostering a diverse community of outstanding faculty, staff and students, as well as ensuring equal educational opportunity, employment and access to services, programs and activities, without regard to an individual's race, color, national origin, religion, creed, age, disability, sex, gender, identity, sexual orientation, familial status, pregnancy, predisposing genetic characteristics, military status, domestic violence victim status, or criminal conviction. Employees, students, applicants or other members of the College community (including but not limited to vendors, visitors and guests) may not be subjected to harassment that is prohibited by law, or treated adversely or retaliated against based upon a protected characteristic.