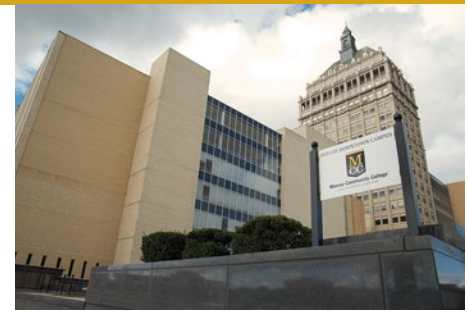




New Downtown Campus

Sustainable Design Features Integrated into Buildings



In keeping with the college's commitment to environmental responsibility, MCC's Downtown Campus is applying green building principles to its design and construction.

Major green features are incorporated in the location/construction, water and energy conservation, materials and resources, indoor environmental quality, and roofing.

MCC is already home to three Leadership in Energy and Environmental Design certified buildings, achieving a silver and two gold certifications for meeting sustainability criteria.

Construction

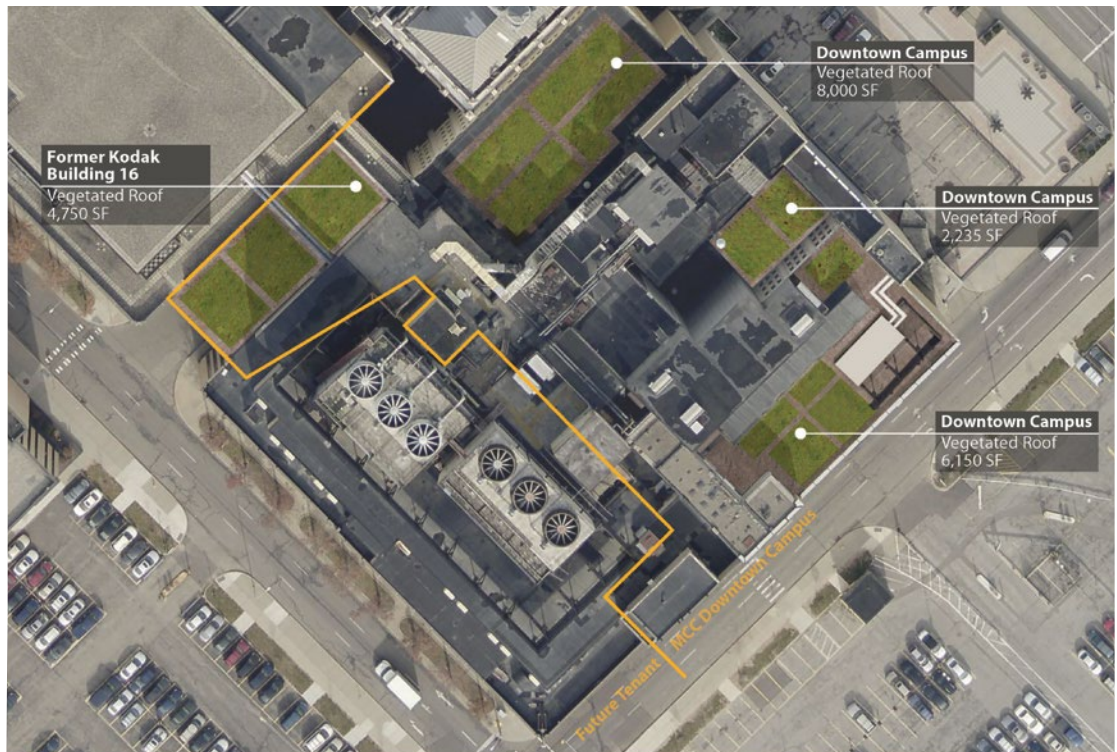
As the Downtown Campus project involves renovating existing buildings, 95 percent of the exterior walls, floors and roofs will be reused. As a result, MCC will benefit immediately from conservation of resources and waste reduction and, in the long run, an extended life cycle of the buildings.

About 75 percent of the construction and demolition debris will be diverted from going to a landfill, as part of the project's construction waste management plan.

The project uses sustainably grown wood as well as interior finishes and products that contain significant amounts of recycled content.

Energy and Water Efficiency

The new facility is designed to be 22 percent more energy-efficient than the existing buildings as a whole. This is accomplished by replacing a single-pane curtain wall of



Retrofitting three buildings at the Downtown Campus site with green roofs will provide water quality protection and energy savings. The former Kodak Building 16 has been designated for future businesses under Start-Up NY.



windows with thermal pane glazing, adding insulation to the exterior envelope, using more energy-efficient lighting, and upgrading heating, ventilation and air conditioning/refrigeration systems.

(Continued on back)

Budget: \$78 million

Project timeline:

- **Spring-Fall 2014**
Design development
- **Winter 2014-Spring 2015**
Separation of infrastructure from Eastman Kodak Co. and Carestream Health Inc.
- **Summer-Fall 2015**
Construction contracts awarded
- **Fall 2015-Summer 2017**
Construction
- **Fall 2017**
Classes begin



(Continued from front)

In addition, water consumption will be reduced through the installation of low-flow plumbing fixtures.

To further reduce negative environmental impacts, no refrigerants are being used in the new HVAC systems.

► **Alternative Transportation**

Multiple city bus stops located in close proximity to the campus make public transportation a convenient option and encourage individuals to forgo driving to campus. In addition, MCC will continue to provide free shuttle service between the Brighton Campus and the downtown site.

The project also promotes the use of bicycles by providing bike racks as well as showers and changing facilities.

► **Indoor Environmental Quality**

The building design promotes healthy indoor air quality by installing systems that monitor ventilation and create a comfortable environment.

In addition, the project uses low-emitting products, which reduce negative health effects.

► **Green Roofs**

Three MCC Downtown Campus buildings will be retrofitted with green roofs, reducing storm water runoff and rooftop

Links to follow project's progress:

MCC: <http://www.monroecc.edu/downtown> provides the college's vision for the campus, a timeline of key events in the project's life, news clippings, a photo gallery and an architectural animation.

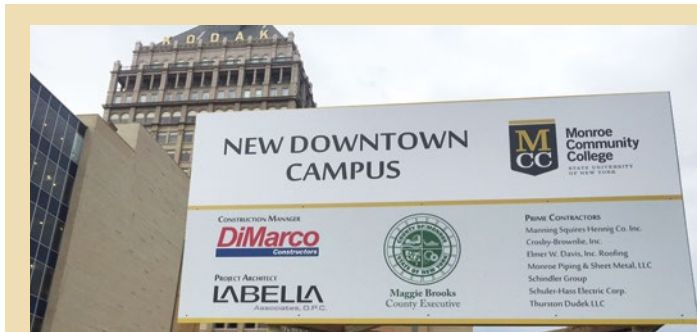
DiMarco Constructors: <http://mccdowntown.dimarcoconstructors.com> features regular project updates and images showing interior work underway.

LaBella Associates: <http://www.labellapc.com/mcc/> shows latest images, a schematic design fly-through and project updates.

solar heat gain; the roof above event space will offer valuable learning opportunities for students.

Areas of the roof without vegetation will be enhanced to minimize the effects of solar heat.

The new campus covers 255,000 square feet on seven floors. Construction in this phase of the project will include the creation of flexible, innovative and high-tech learning spaces, such as simulation labs that allow for real-world applications; a library/learning commons; meeting/function space for hosting events; a bookstore; a fitness center; a cafeteria; and student activity areas.



A new sign announcing the site of MCC's Downtown Campus is posted on the corner of State Street and Morrie Silver Way.

Main construction work on MCC's Downtown Campus began in November 2015 and will be completed a floor at a time progressing from the seventh floor to the first floor.

The project is on schedule and will be completed in time for classes to begin at the new campus in fall 2017.

Here is a timeline of planned major construction activities*:

- May 2016** — Substantial completion of floor 7
- August 2016** — Substantial completion of floor 6 and roof work, including adding vegetation
- October 2016** — Substantial completion of floor 5
- November 2016** — Substantial completion of floor 4
- December 2016** — Reconstruction of passenger and freight elevators substantially completed
- January 2017** — Substantial completion of floors 2 and 3
- February 2017** — Substantial completion of floor 1
- June 2017** — Demolition and construction work substantially completed at parking lot on Morrie Silver Way, parking lot entrances on Plymouth Avenue, and plaza parking.

*This is not a comprehensive list of anticipated milestones and is subject to change.

Connect with MCC
www.monroecc.edu

www.facebook.com/monroecc
 @MCCPresident • MonroeCC
#MCC

Anne M. Kress, Ph.D.
President
(585) 292-2100
PresidentKress@monroecc.edu

Joel Frater, Ed.D.
Executive Dean, Downtown Campus
(585) 262-1610
jfrater@monroecc.edu